



THE WILCOX

The Ridge Collection Contemporary Towns

3 Bedroom Interior 1,306 sq.ft.
Exterior 99 sq.ft.



Purchasers are advised that all prices, sizes, figures, materials, plans, specifications, floor plans and information, including without limitation the size, location, design and layout of windows, walls, doors, structures, appliances (if any), and the balcony and terrace are subject to change without notice to the purchaser for any reason whatsoever at the sole, unfettered and absolute discretion of the vendor. Actual usable floor space, living area and square footage may vary from stated floor area. All floor plans are approximate dimensions. Balconies, terraces and layouts are determined by the block your unit is in. All renderings and illustrations are artist's concept only. Furniture is depicted for illustration purposes only and is not included. The unit shown may be the reverse of the unit purchased. The location of the building and units shown are approximate only and are subject to change without notice to the purchaser. E. & O.E. July 2020.



Elev. A - Front

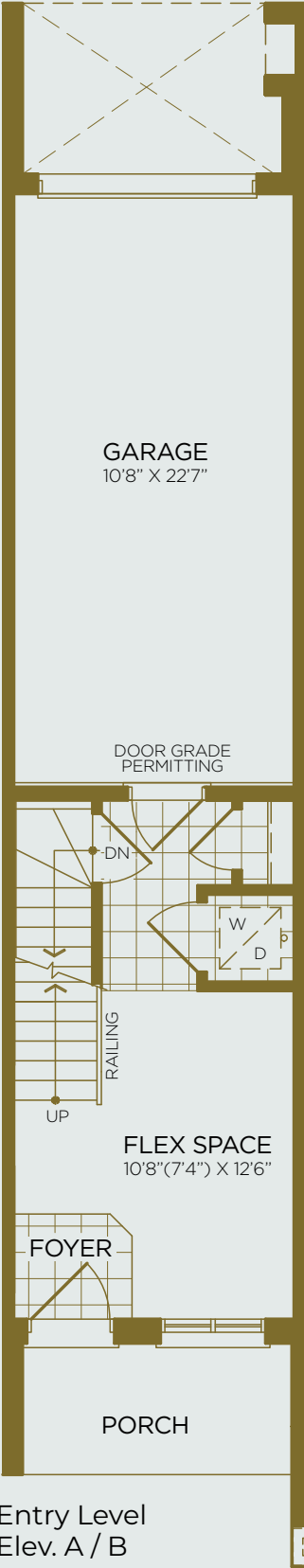


Elev. A - Back

THE RICHMOND

The Ridge Collection Contemporary Towns

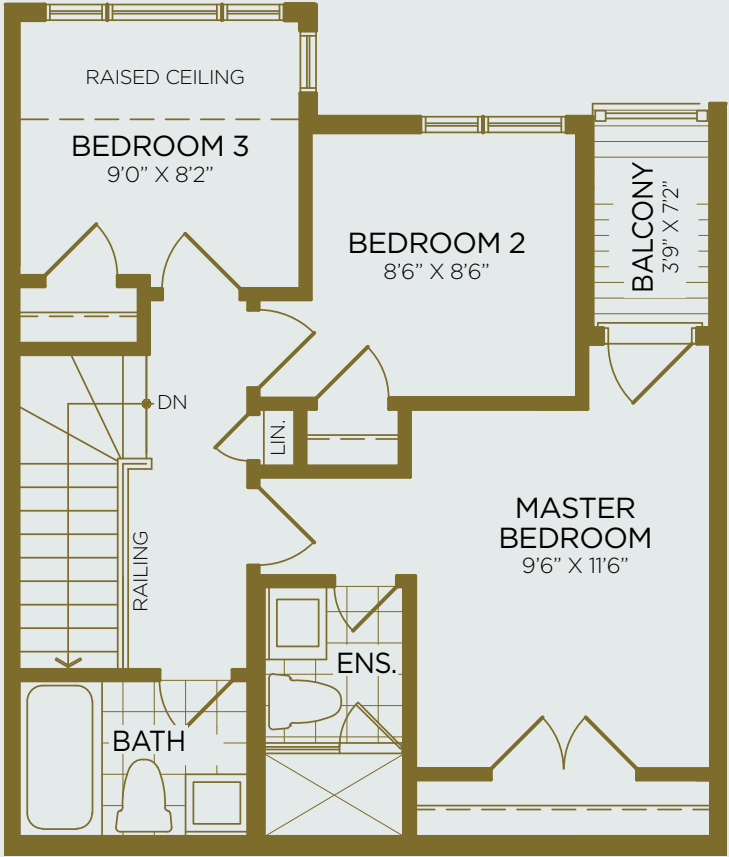
3 Bedroom Interior 1,379 sq.ft.
Exterior 167 sq.ft.



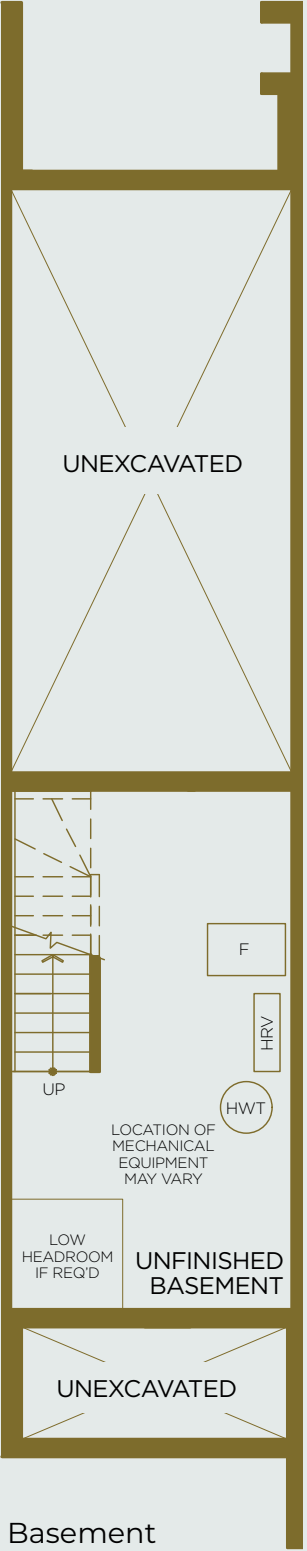
Entry Level
Elev. A / B



Main Floor
Elev. A / B



Upper Floor
Elev. A / B



Basement
Elev. A / B

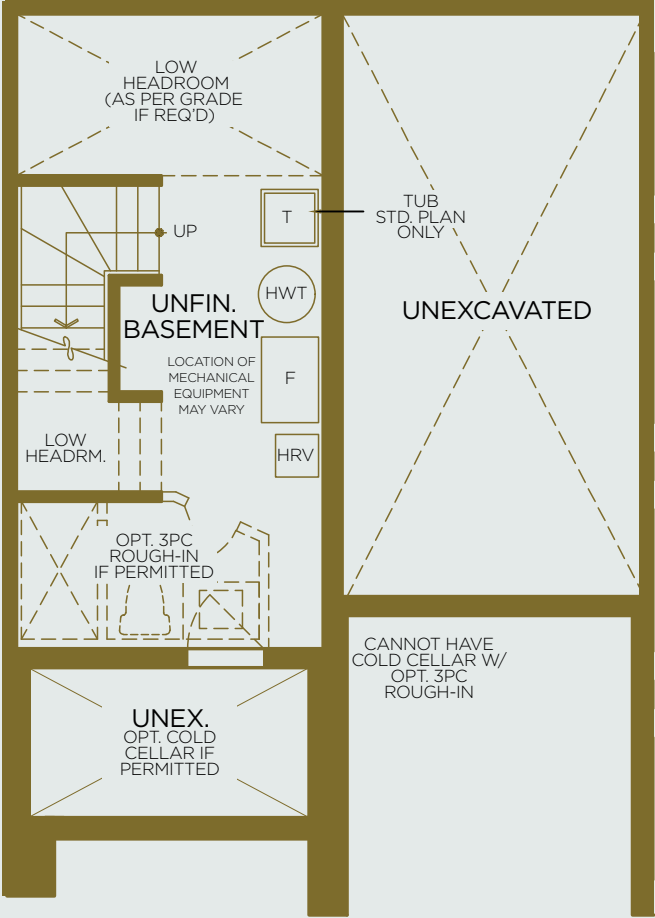
Purchasers are advised that all prices, sizes, figures, materials, plans, specifications, floor plans and information, including without limitation the size, location, design and layout of windows, walls, doors, structures, appliances (if any), and the balcony and terrace are subject to change without notice to the purchaser for any reason whatsoever at the sole, unfettered and absolute discretion of the vendor. Actual usable floor space, living area and square footage may vary from stated floor area. All floor plans are approximate dimensions. Balconies, terraces and layouts are determined by the block your unit is in. All renderings and illustrations are artist's concept only. Furniture is depicted for illustration purposes only and is not included. The unit shown may be the reverse of the unit purchased. The location of the building and units shown are approximate only and are subject to change without notice to the purchaser. E. & O.E. July 2020.



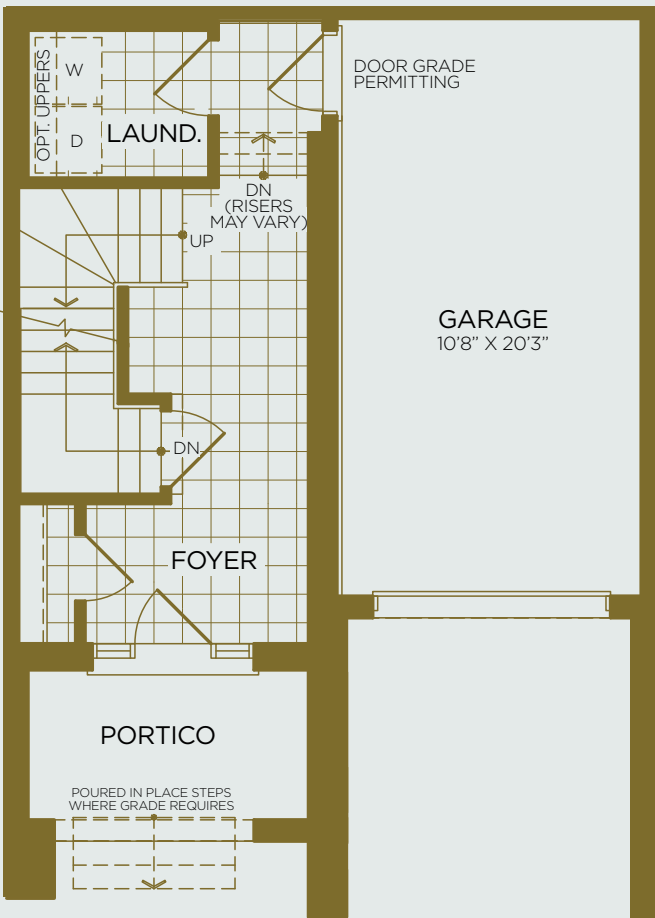
THE SANDBANKS

The Moraine Collection
Boutique Towns

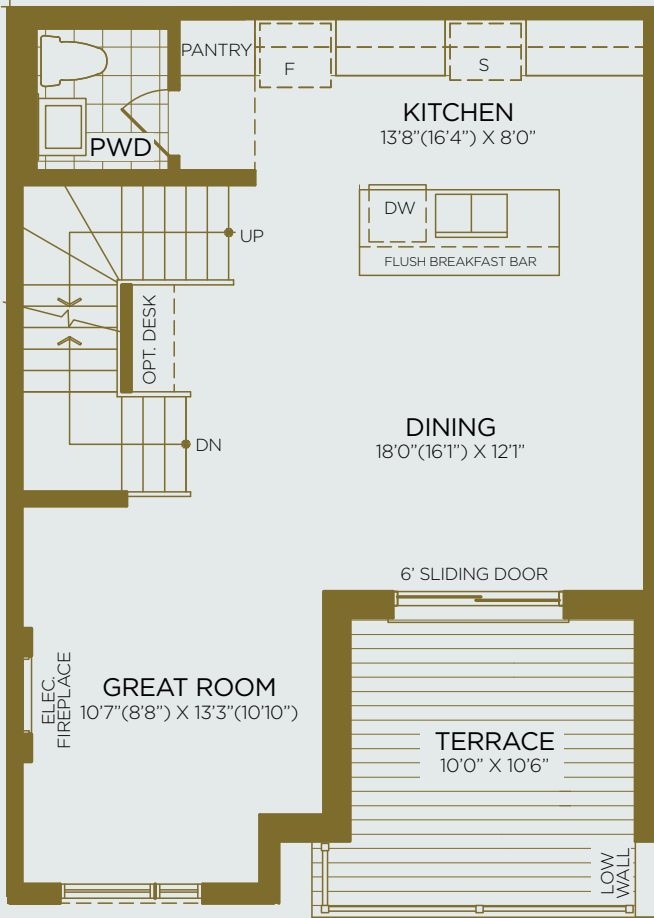
3 Bedroom Interior 1,518 sq.ft.
Exterior 155 sq.ft.



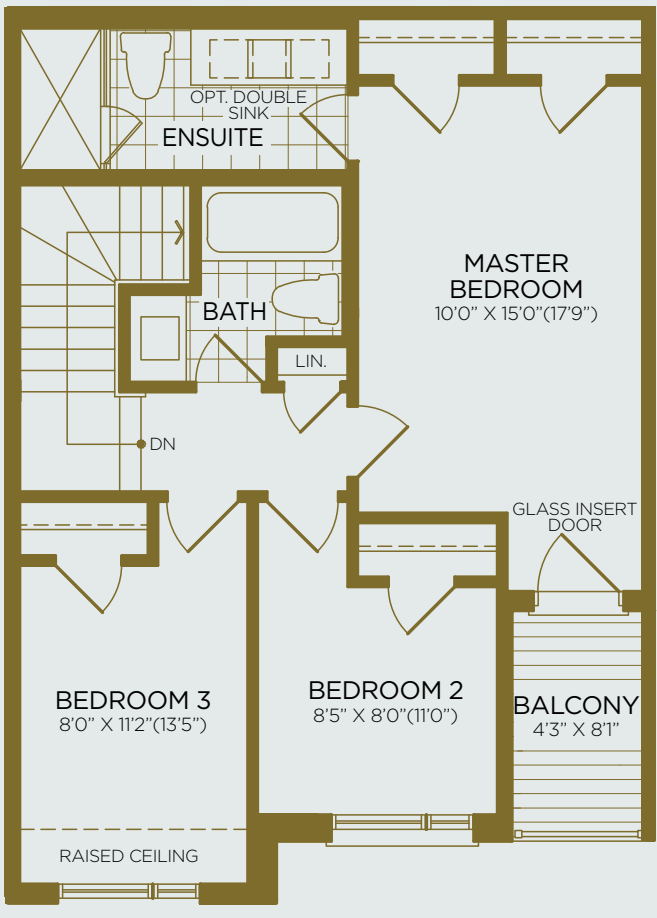
Basement
Elev. A / B



Entry Level
Elev. A / B



Main Floor
Elev. A / B



Upper Floor
Elev. A

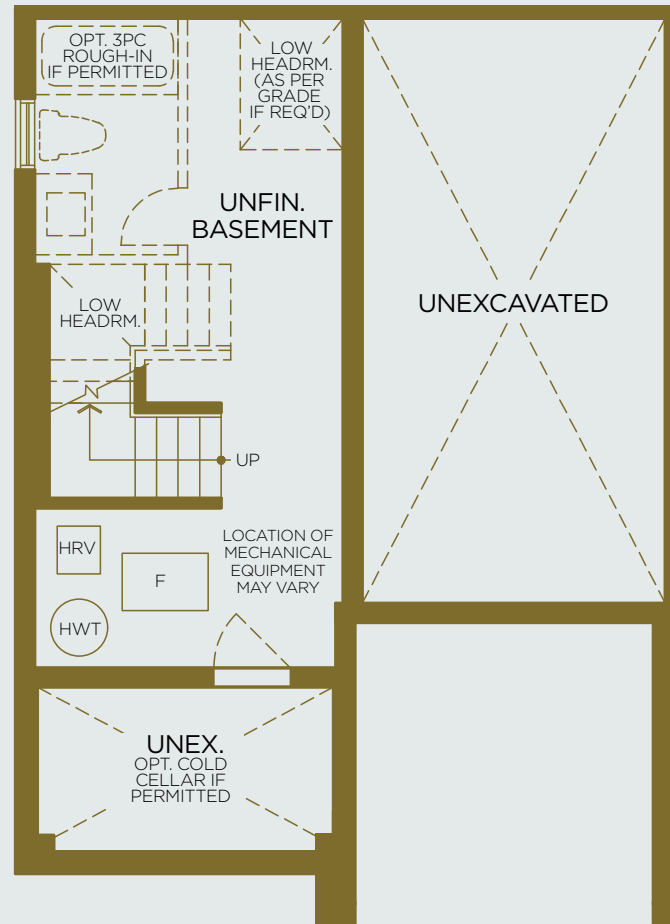
Purchasers are advised that all prices, sizes, figures, materials, plans, specifications, floor plans and information, including without limitation the size, location, design and layout of windows, walls, doors, structures, appliances (if any), and the balcony and terrace are subject to change without notice to the purchaser for any reason whatsoever at the sole, unfettered and absolute discretion of the vendor. Actual usable floor space, living area and square footage may vary from stated floor area. All floor plans are approximate dimensions. Balconies, terraces and layouts are determined by the block your unit is in. All renderings and illustrations are artist's concept only. Furniture is depicted for illustration purposes only and is not included. The unit shown may be the reverse of the unit purchased. The location of the building and units shown are approximate only and are subject to change without notice to the purchaser. E. & O.E. July 2020.



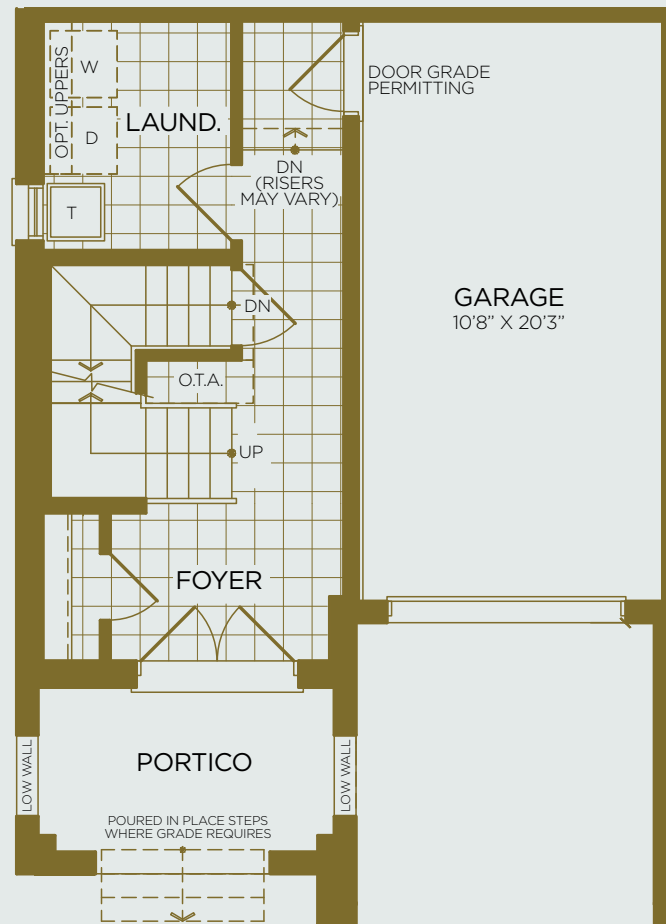
THE BEECHWOOD

The Moraine Collection Boutique Towns

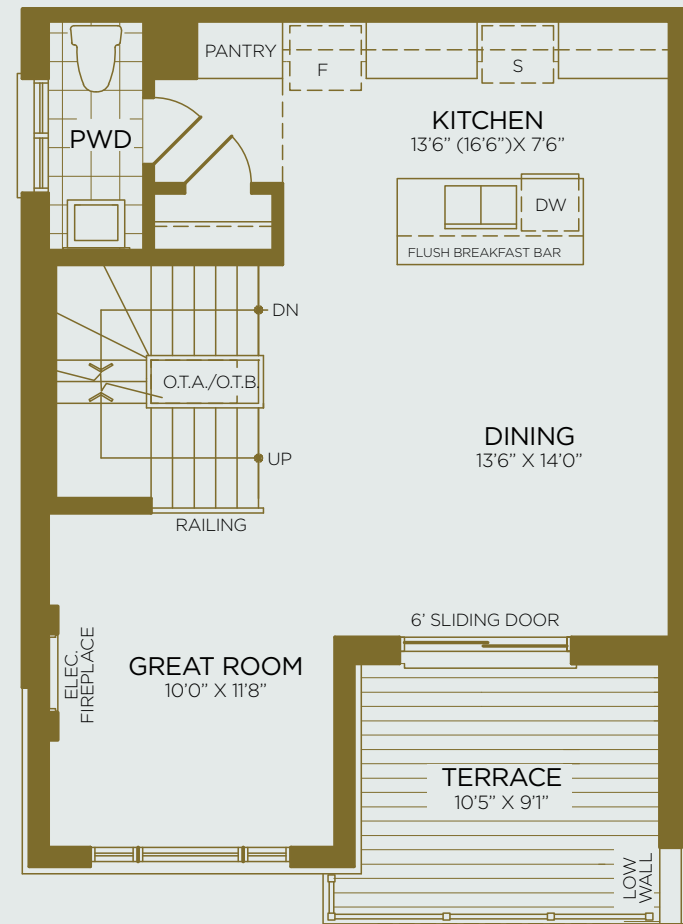
3 Bedroom Interior 1,569 sq.ft.
Exterior 126 sq.ft.



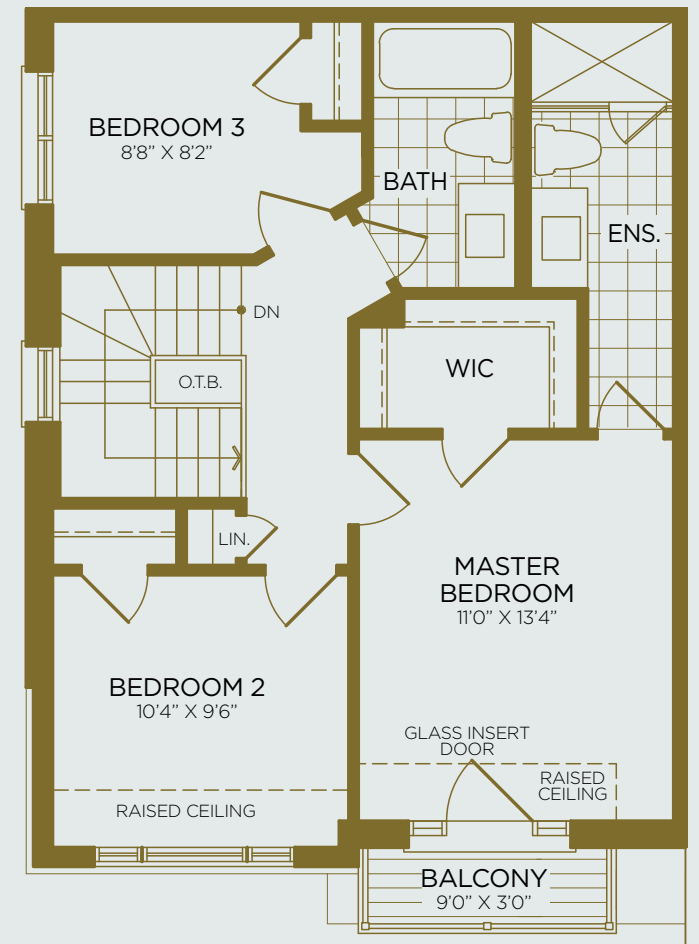
Basement
Elev. A / B



Entry Level
Elev. A / B



Main Floor
Elev. A / B



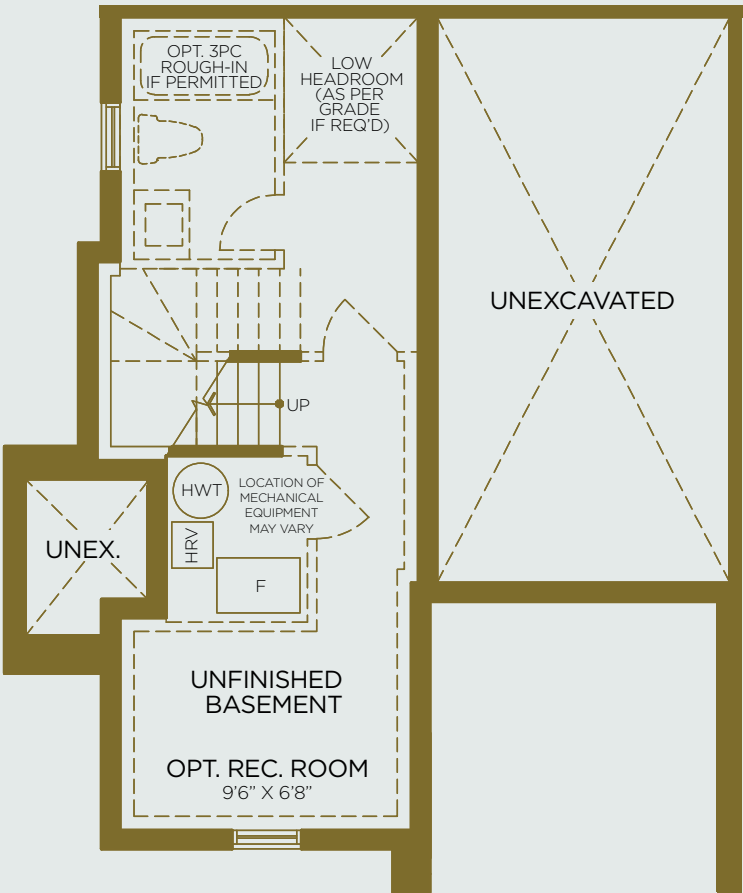
Upper Floor
Elev. A / B



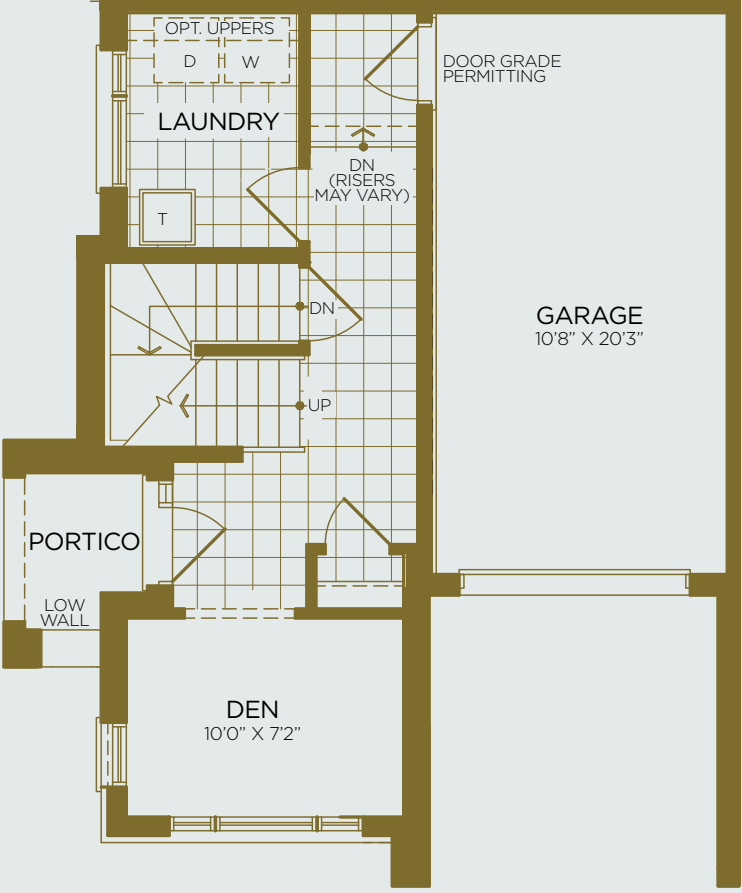
THE BLUE HERON

The Moraine Collection
Boutique Towns

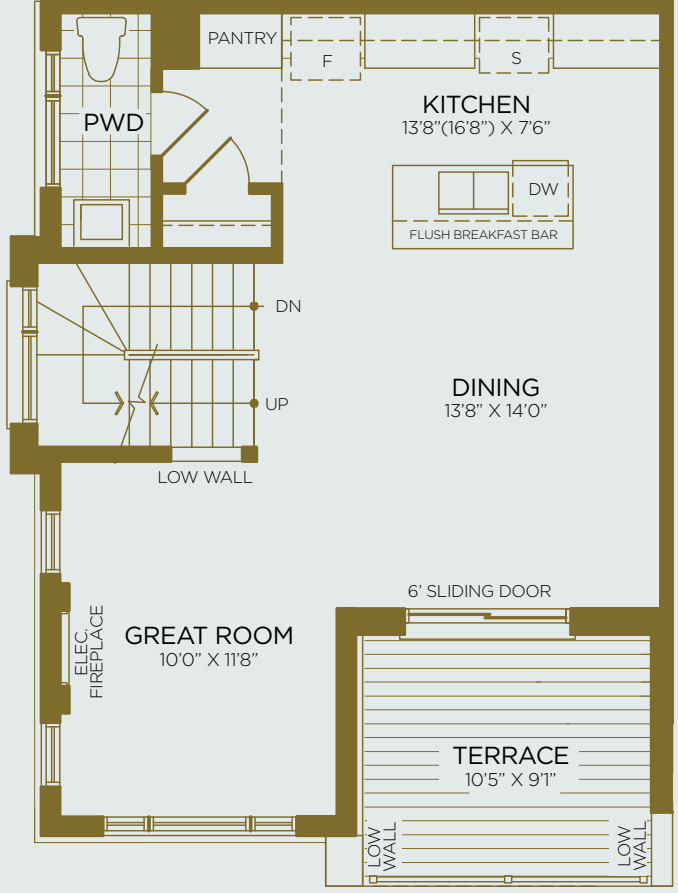
3 Bedroom Interior 1,662 sq.ft.
Exterior 122 sq.ft.



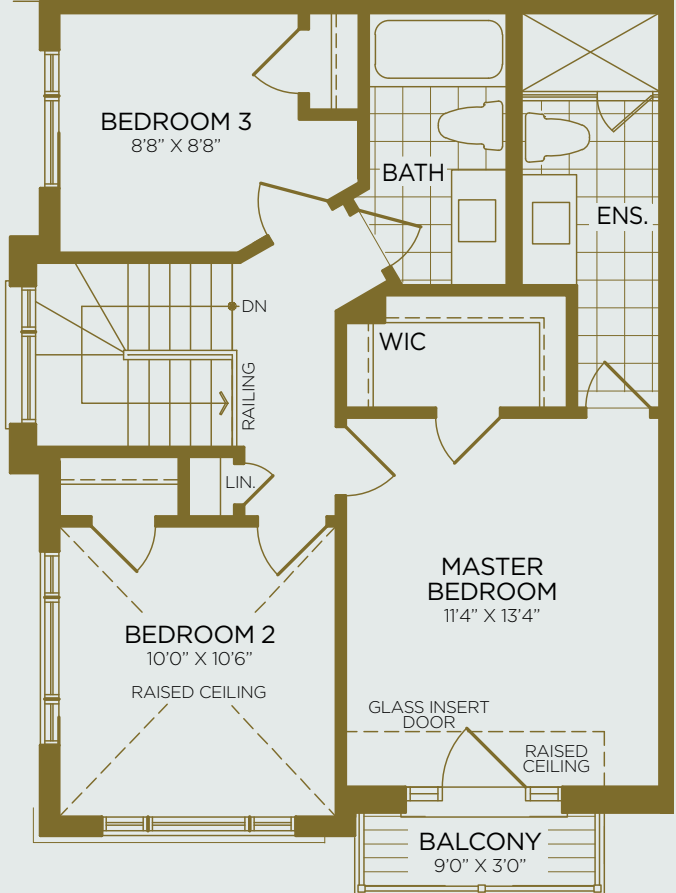
Basement
Elev. A



Entry Level
Elev. A



Main Floor
Elev. A



Upper Floor
Elev. A

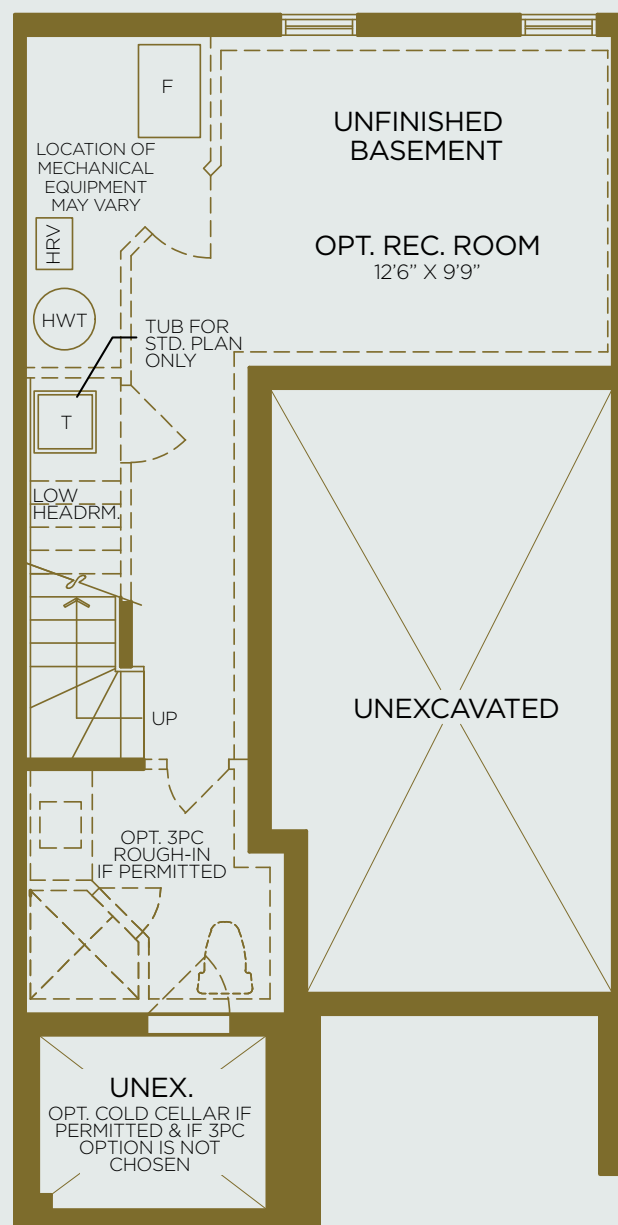
Purchasers are advised that all prices, sizes, figures, materials, plans, specifications, floor plans and information, including without limitation the size, location, design and layout of windows, walls, doors, structures, appliances (if any), and the balcony and terrace are subject to change without notice to the purchaser for any reason whatsoever at the sole, unfettered and absolute discretion of the vendor. Actual usable floor space, living area and square footage may vary from stated floor area. All floor plans are approximate dimensions. Balconies, terraces and layouts are determined by the block your unit is in. All renderings and illustrations are artist's concept only. Furniture is depicted for illustration purposes only and is not included. The unit shown may be the reverse of the unit purchased. The location of the building and units shown are approximate only and are subject to change without notice to the purchaser. E. & O.E. July 2020.



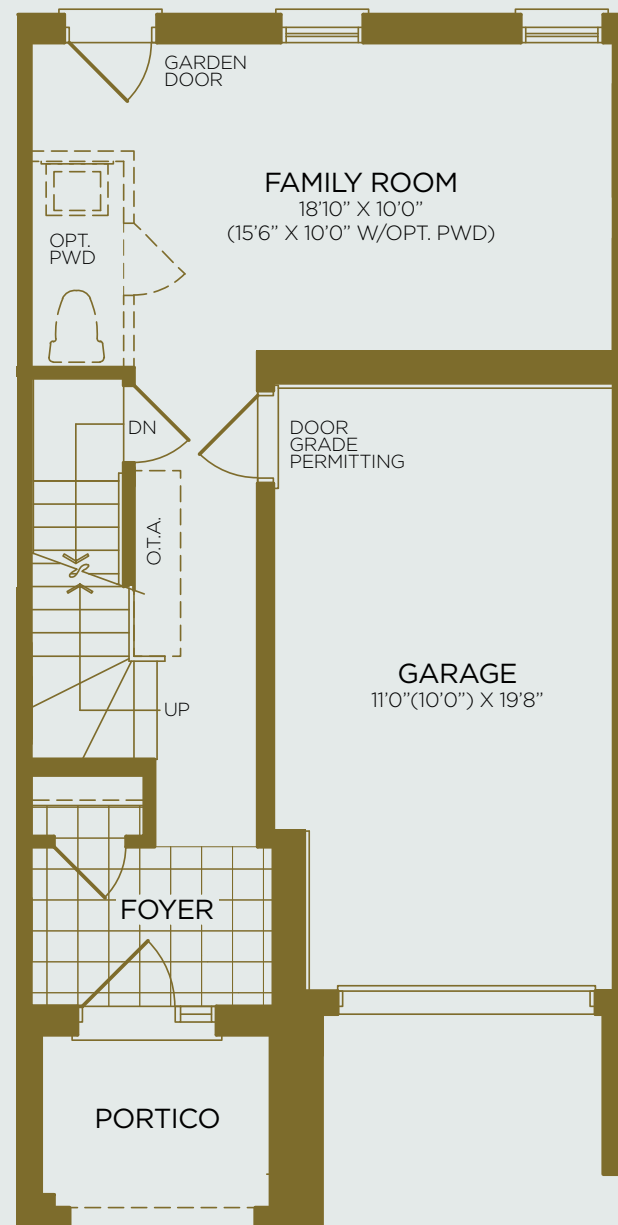
THE HIGHGROVE

The Grand Oak Collection Traditional Towns

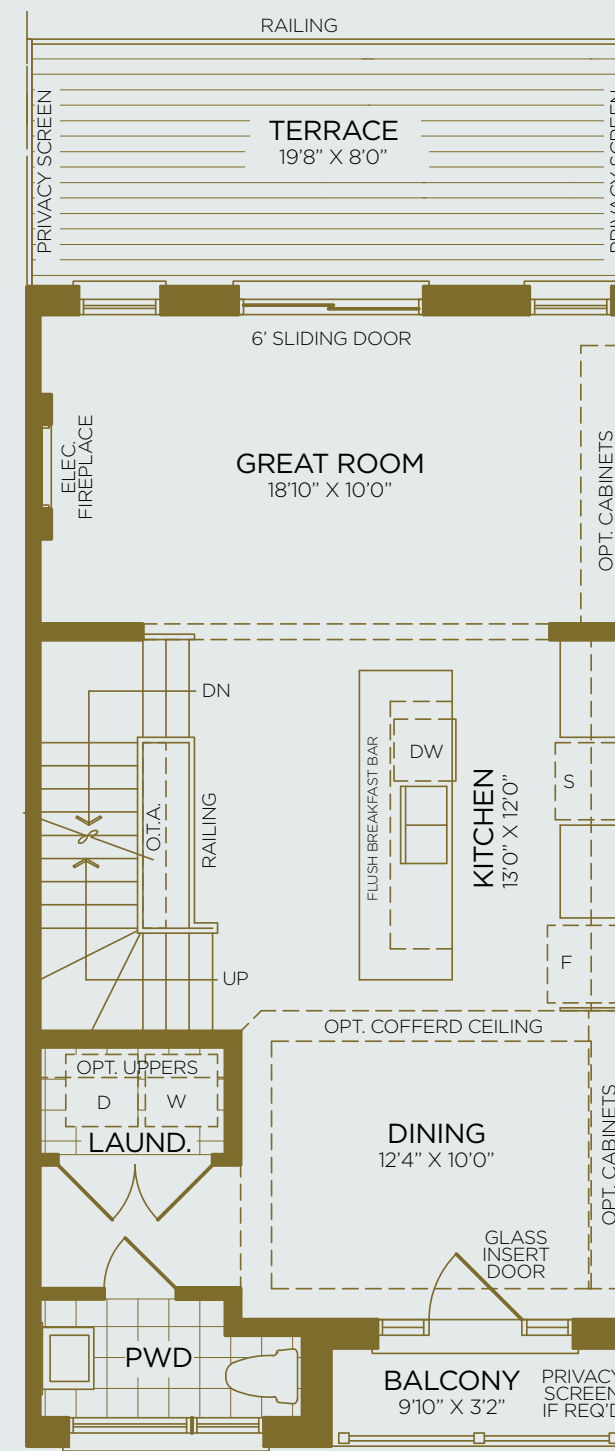
3 Bedroom Interior 1,662 sq.ft.
Exterior 122 sq.ft.



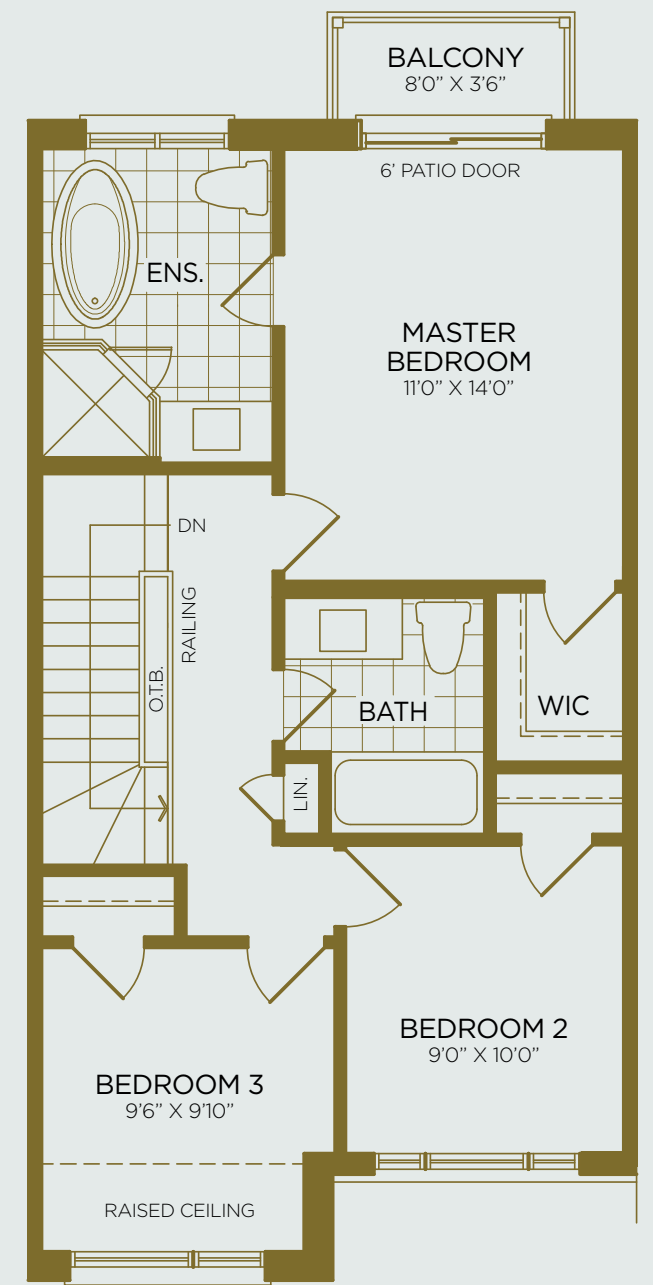
Basement | Elev. A / B
& A / B Mod.



Entry Level | Elev. A
& A Mod. A



Main Floor
Elev. A



Upper Floor
Elev. A

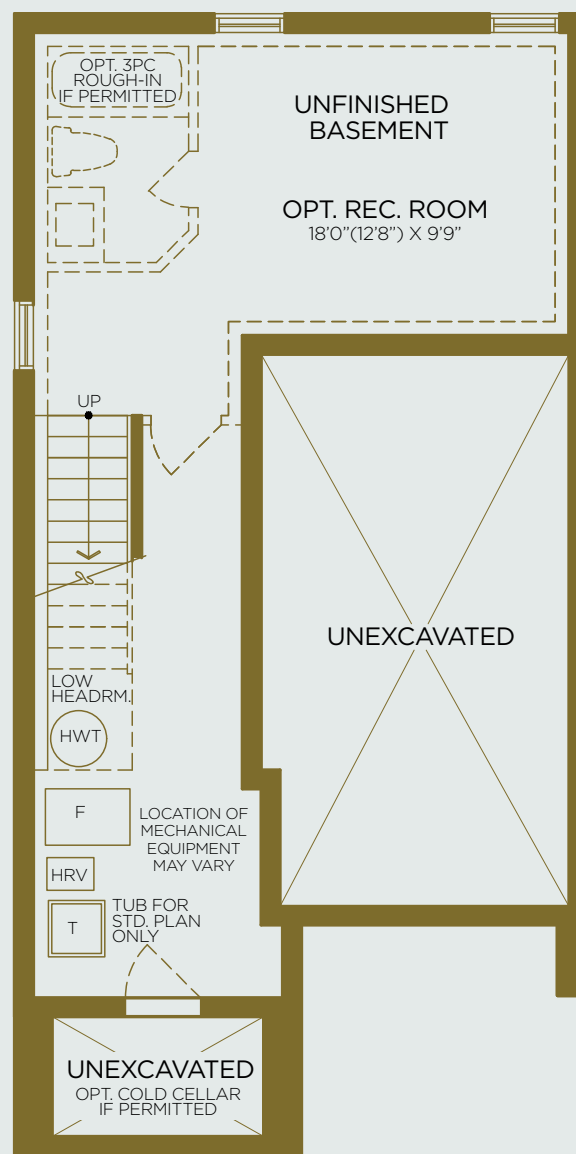
Purchasers are advised that all prices, sizes, figures, materials, plans, specifications, floor plans and information, including without limitation the size, location, design and layout of windows, walls, doors, structures, appliances (if any), and the balcony and terrace are subject to change without notice to the purchaser for any reason whatsoever at the sole, unfettered and absolute discretion of the vendor. Actual usable floor space, living area and square footage may vary from stated floor area. All floor plans are approximate dimensions. Balconies, terraces and layouts are determined by the block your unit is in. All renderings and illustrations are artist's concept only. Furniture is depicted for illustration purposes only and is not included. The unit shown may be the reverse of the unit purchased. The location of the building and units shown are approximate only and are subject to change without notice to the purchaser. E. & O.E. July 2020.



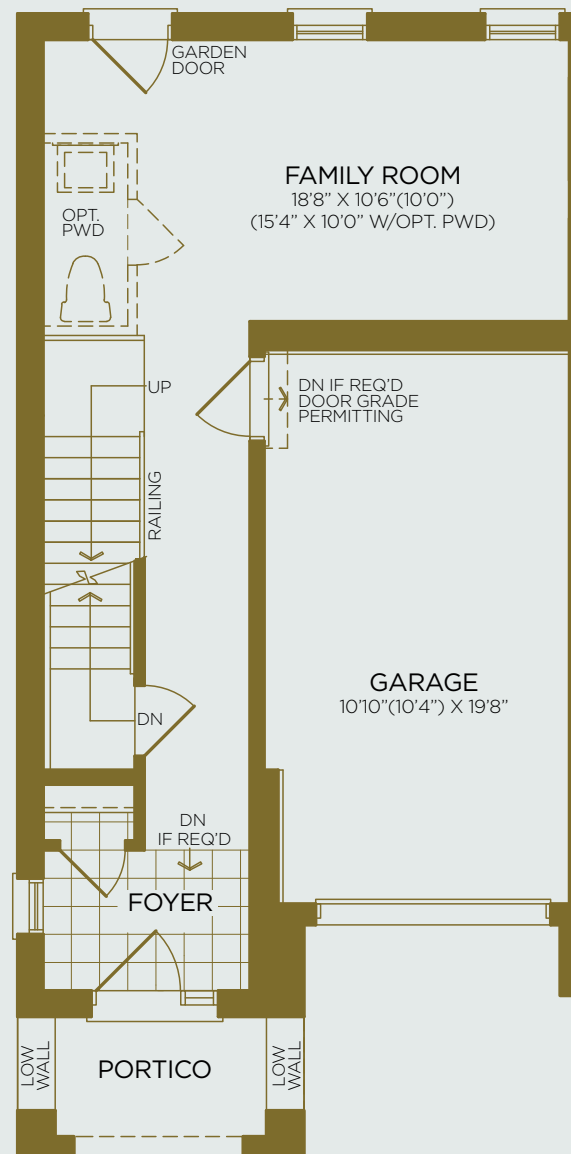
THE SILVERWOOD

The Grand Oak Collection Traditional Towns

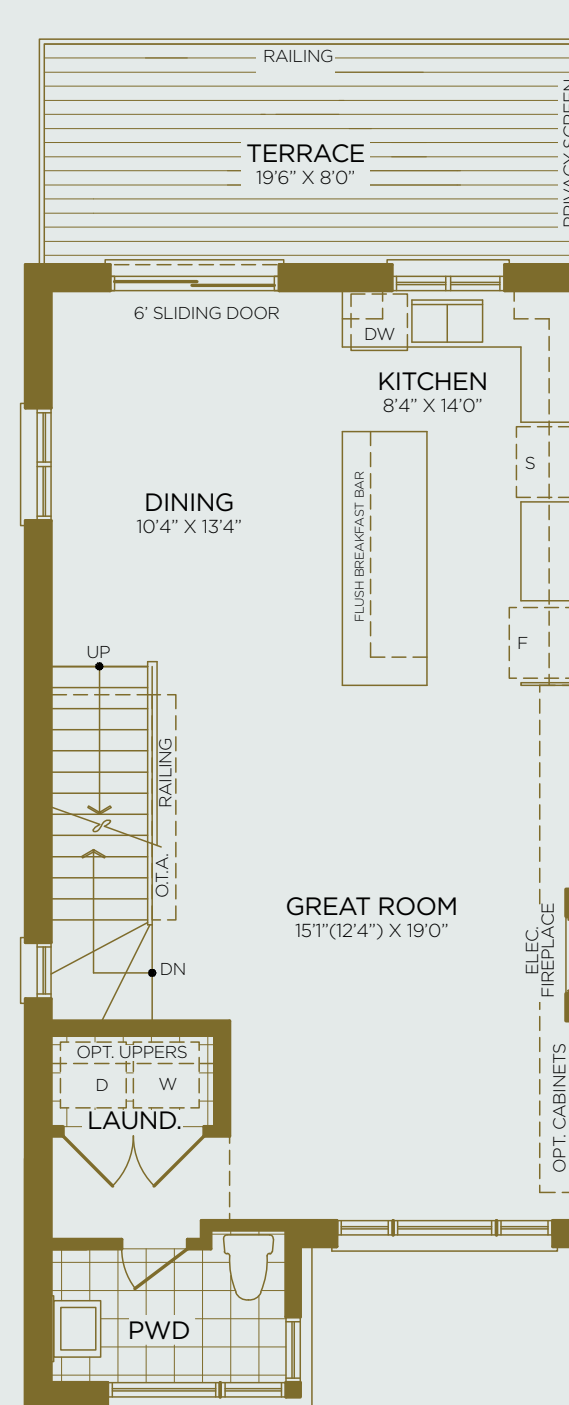
3 Bedroom Interior 1,954 sq.ft.
Exterior 184 sq.ft.



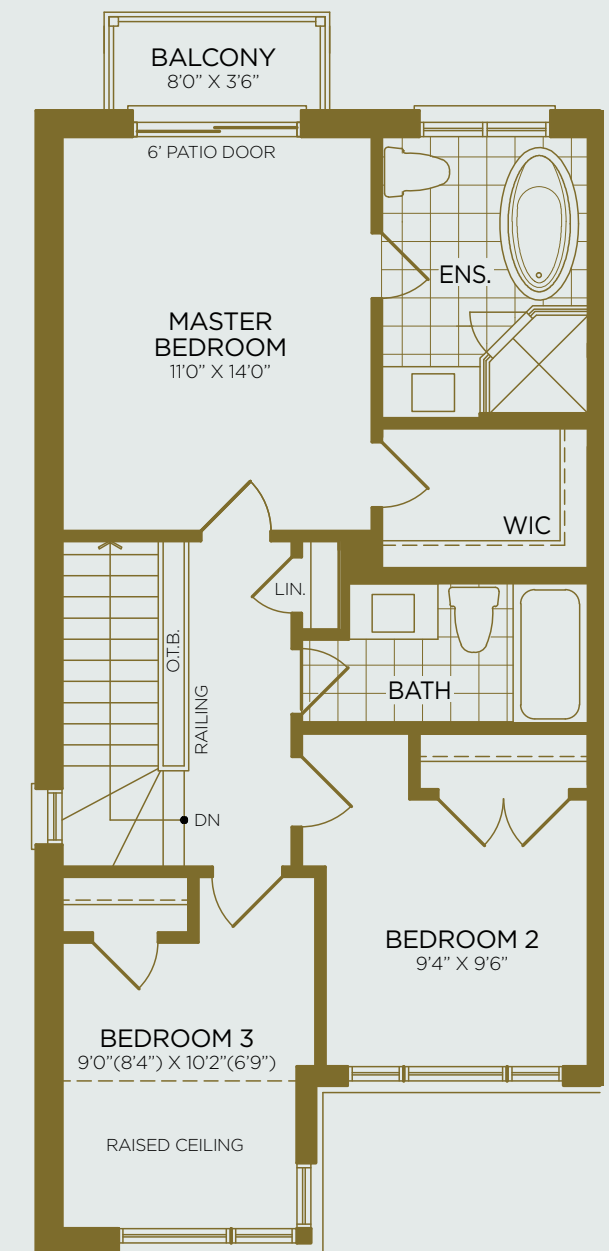
Basement
Elev. A / B



Entry Level
Elev. A



Main Floor
Elev. A



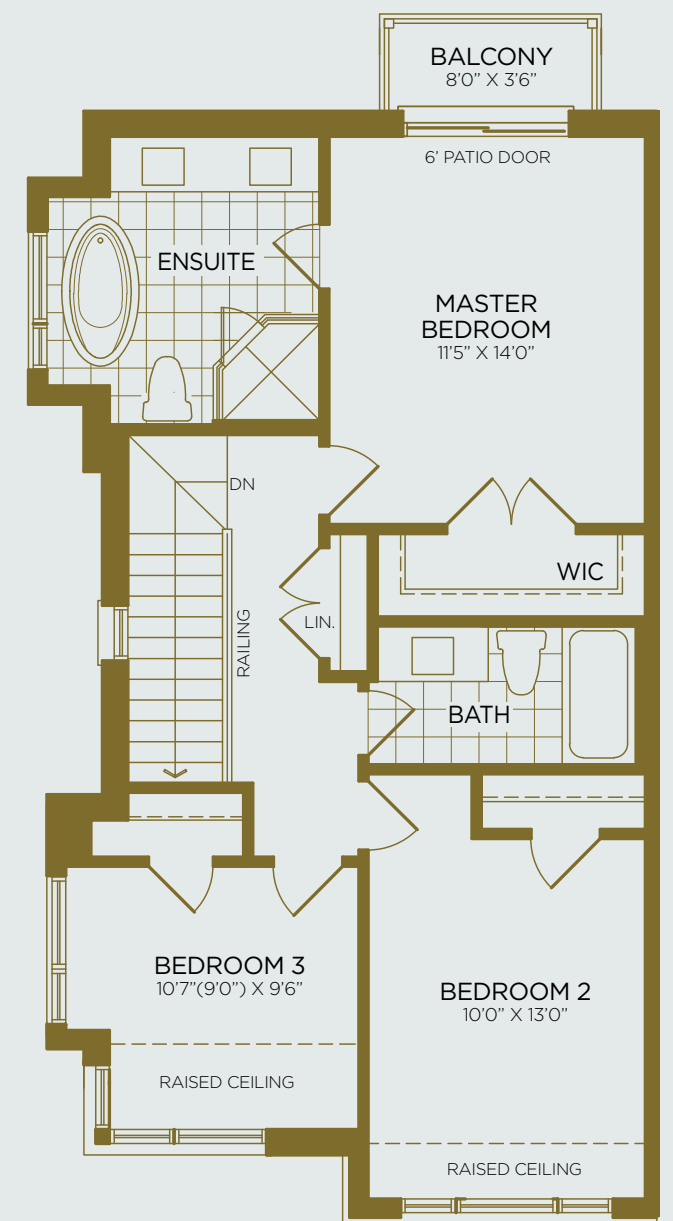
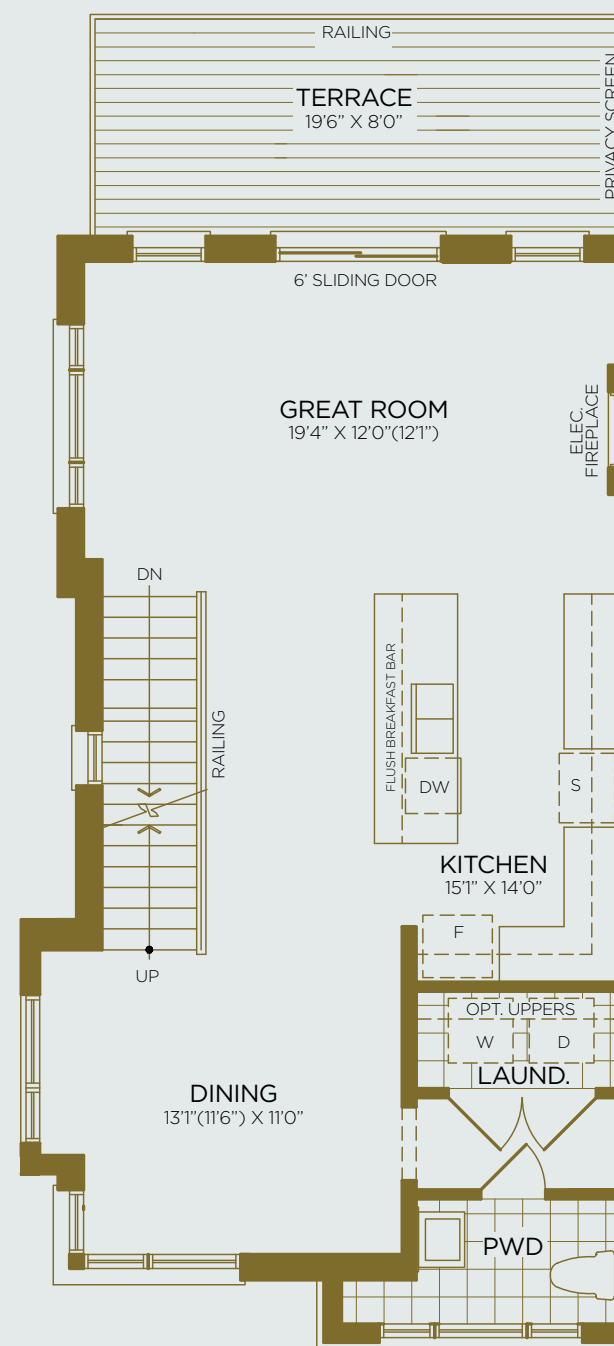
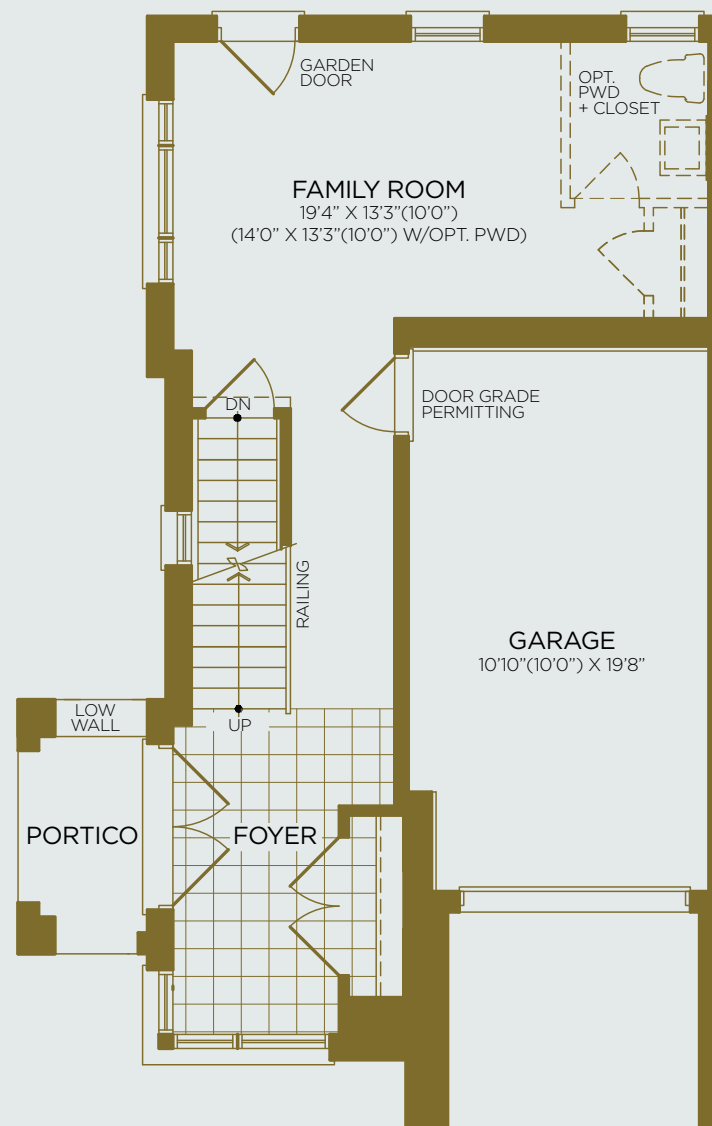
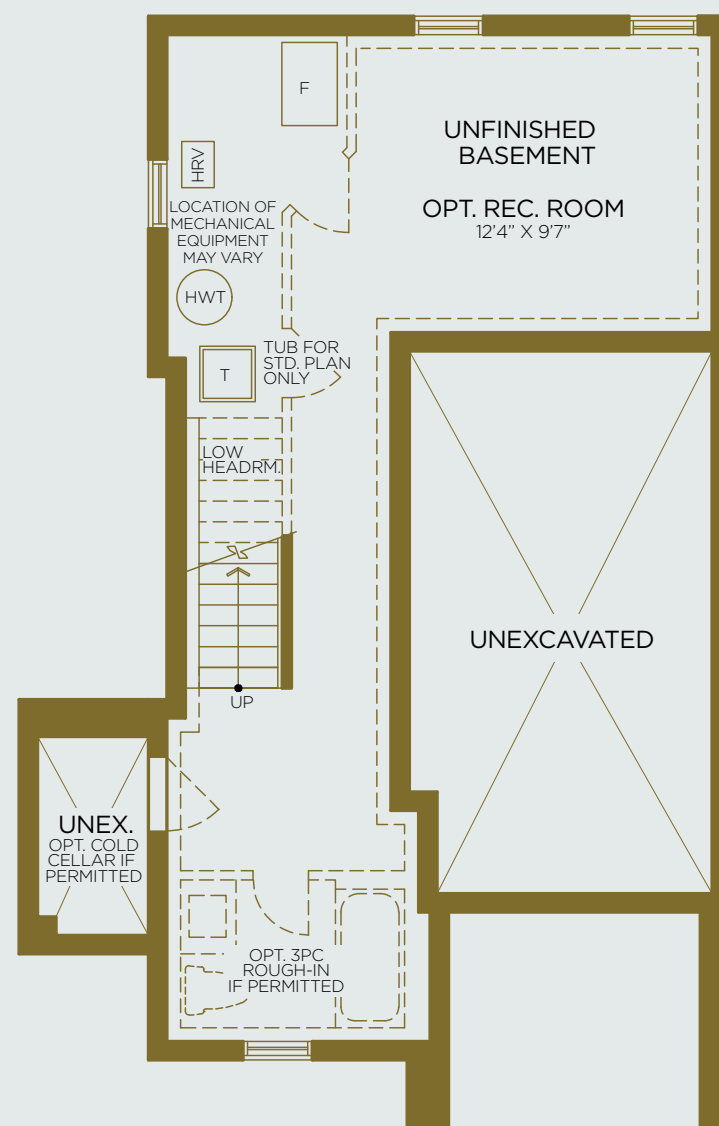
Upper Floor
Elev. A



THE WILLOW

The Grand Oak Collection
Traditional Towns

3 Bedroom Interior 2,132 sq.ft.
Exterior Terrace 184 sq.ft.

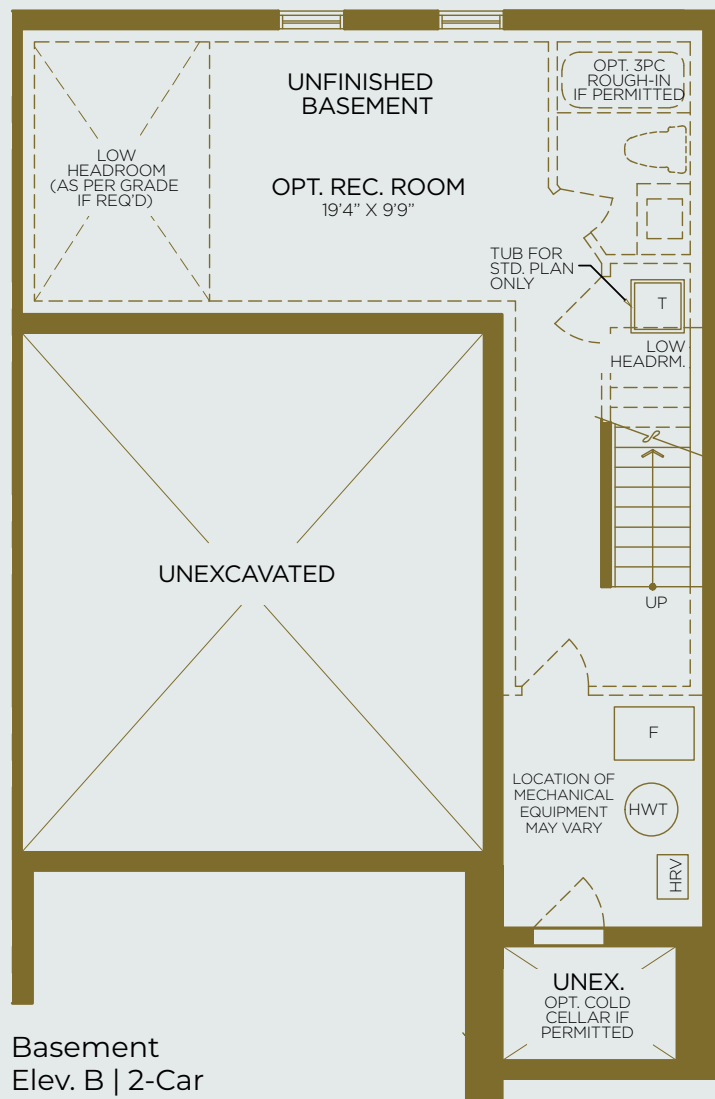




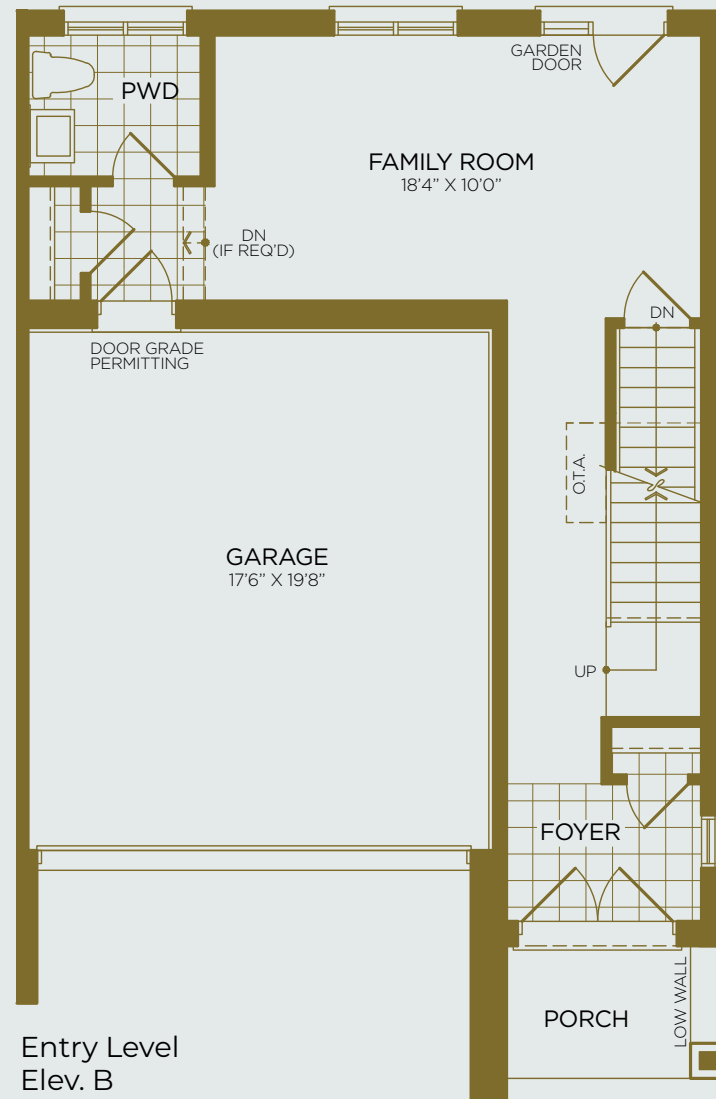
THE NOBLEWOOD

The Grand Oak Collection
Traditional Towns

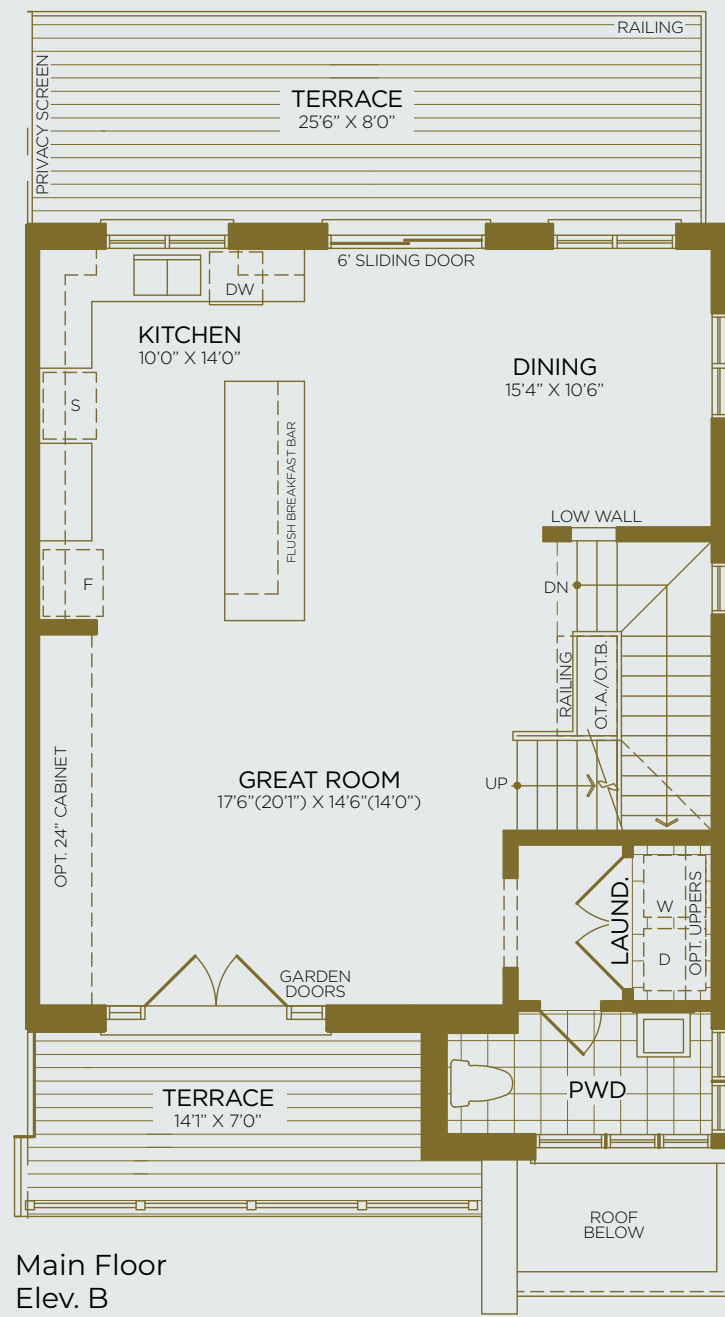
3 Bedroom Interior 2,249 sq.ft.
Exterior 347 sq.ft.



Basement
Elev. B | 2-Car



Entry Level
Elev. B



Main Floor
Elev. B



Upper Floor
Elev. B



Elev. A - Front

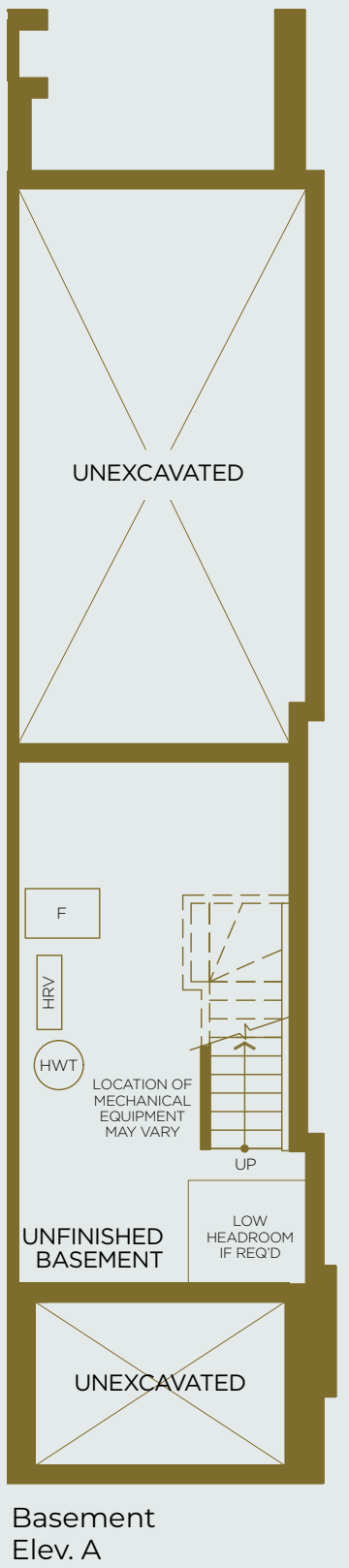
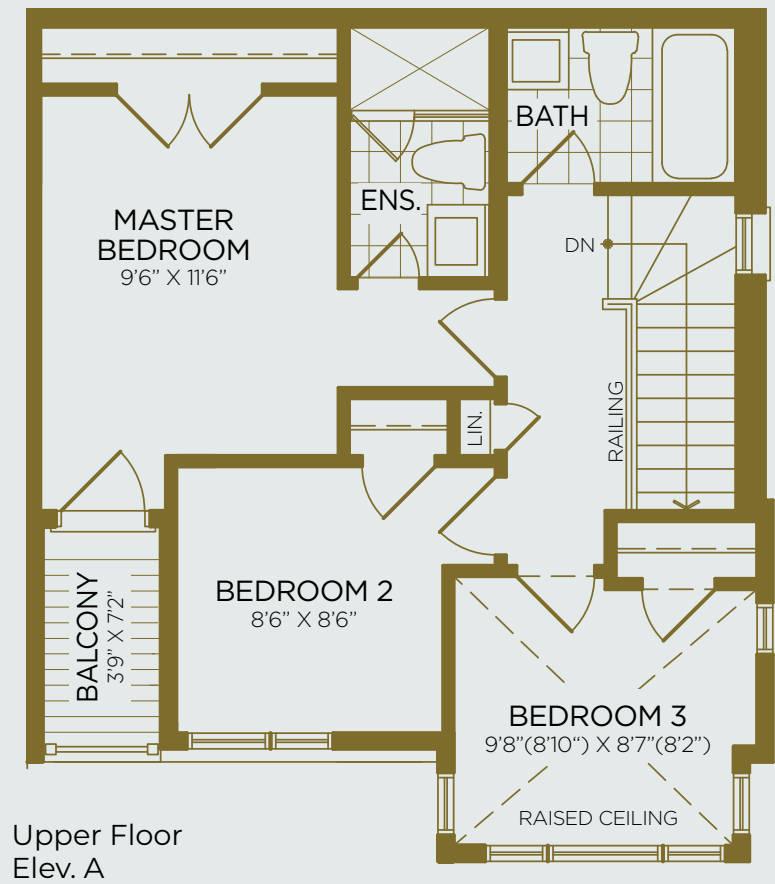


Elev. A - Back

THE WILCOX END

The Ridge Collection Contemporary Towns

3 Bedroom Interior 1,355 sq.ft.
Exterior 101 sq.ft.



ST-2E

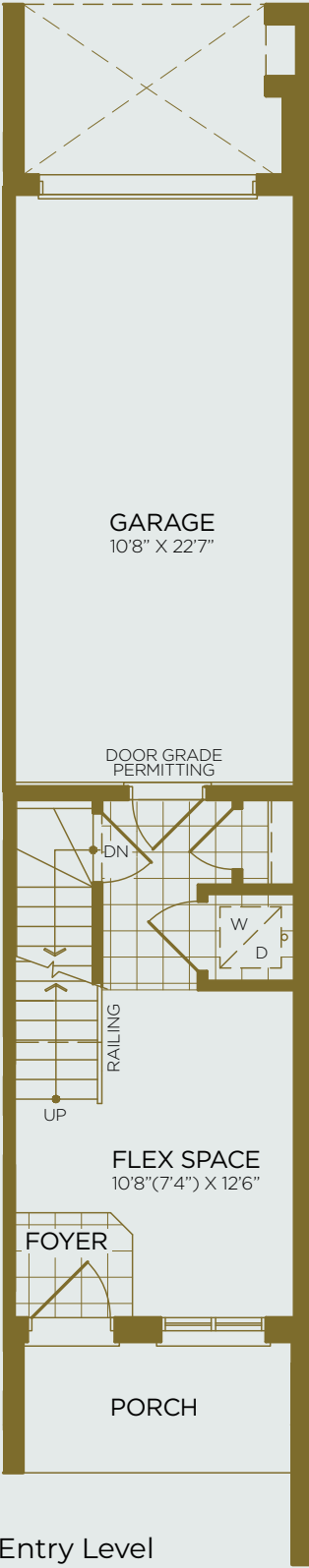
Purchasers are advised that all prices, sizes, figures, materials, plans, specifications, floor plans and information, including without limitation the size, location, design and layout of windows, walls, doors, structures, appliances (if any), and the balcony and terrace are subject to change without notice to the purchaser for any reason whatsoever at the sole, unfettered and absolute discretion of the vendor. Actual usable floor space, living area and square footage may vary from stated floor area. All floor plans are approximate dimensions. Balconies, terraces and layouts are determined by the block your unit is in. All renderings and illustrations are artist's concept only. Furniture is depicted for illustration purposes only and is not included. The unit shown may be the reverse of the unit purchased. The location of the building and units shown are approximate only and are subject to change without notice to the purchaser. E. & O.E. July 2020.



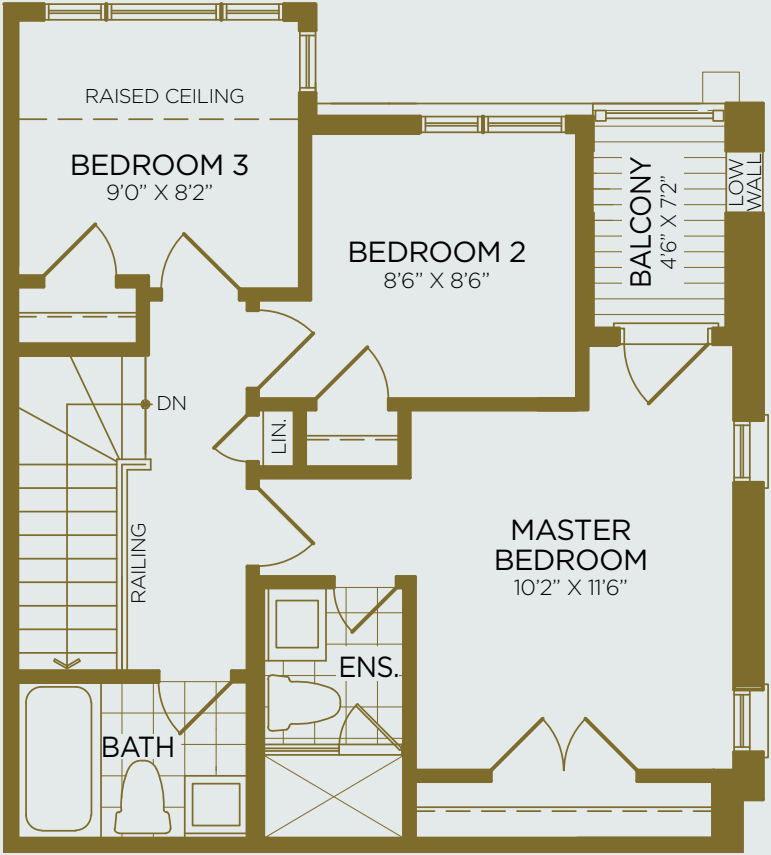
THE RICHMOND END

The Ridge Collection
Contemporary Towns

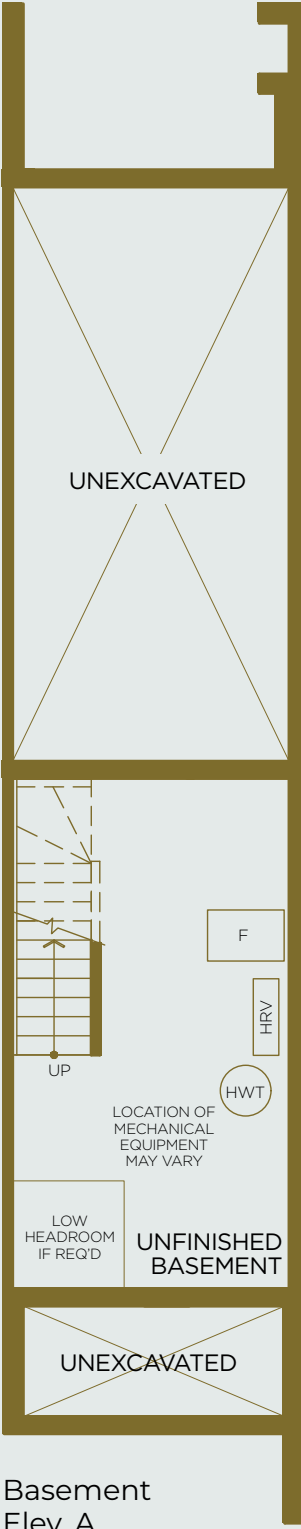
3 Bedroom Interior 1,430 sq.ft.
Exterior 179 sq.ft.



Main Floor
Elev. A



Upper Floor
Elev. A



Basement
Elev. A

Purchasers are advised that all prices, sizes, figures, materials, plans, specifications, floor plans and information, including without limitation the size, location, design and layout of windows, walls, doors, structures, appliances (if any), and the balcony and terrace are subject to change without notice to the purchaser for any reason whatsoever at the sole, unfettered and absolute discretion of the vendor. Actual usable floor space, living area and square footage may vary from stated floor area. All floor plans are approximate dimensions. Balconies, terraces and layouts are determined by the block your unit is in. All renderings and illustrations are artist's concept only. Furniture is depicted for illustration purposes only and is not included. The unit shown may be the reverse of the unit purchased. The location of the building and units shown are approximate only and are subject to change without notice to the purchaser. E. & O.E. July 2020.