

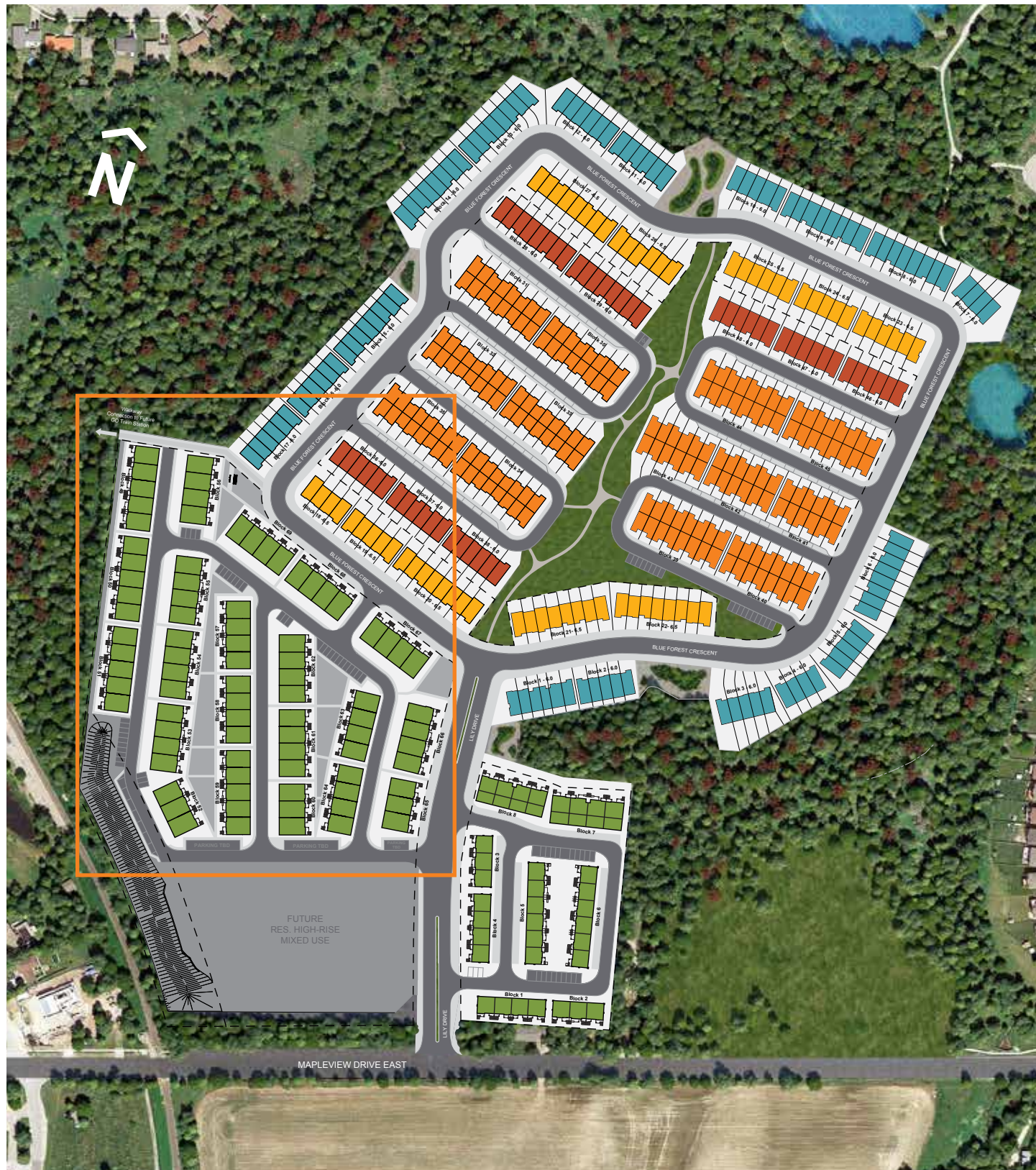
Urban Towns.



URBAN NORTH
TOWNHOMES

SITE PLAN.

URBAN NORTH / FULL COMMUNITY



URBAN NORTH / URBAN TOWNS



-  **URBAN TOWNS**
-  **EXECUTIVE WOODLOT TOWNS**
[6.0]
-  **CONDO TOWNS**
[6.0]
-  **EXECUTIVE TOWNS**
[6.5]
-  **BACK TO BACK TOWNS**



REAR ELEVATION

➤ *URBAN TOWNS.*



FRONT ELEVATION



TYPE A / *ELEVATION "A1"*
Interior

TYPE A / URBAN TOWNS ELEVATION A

FRONT ELEVATION



TYPE A
ELEVATION "A2"
STD, End Condition
ARIA [TH1]
EBEN [TH2]
CORAL [TH3]

TYPE A
ELEVATION "A1"
REV
ARIA [TH1]
EBEN [TH2]
CORAL [TH3]

TYPE A
ELEVATION "A1"
STD
ARIA [TH1]
EBEN [TH2]
CORAL [TH3]

TYPE A
ELEVATION "A2"
REV, End Condition
ARIA [TH1]
EBEN [TH2]
CORAL [TH3]

REAR ELEVATION



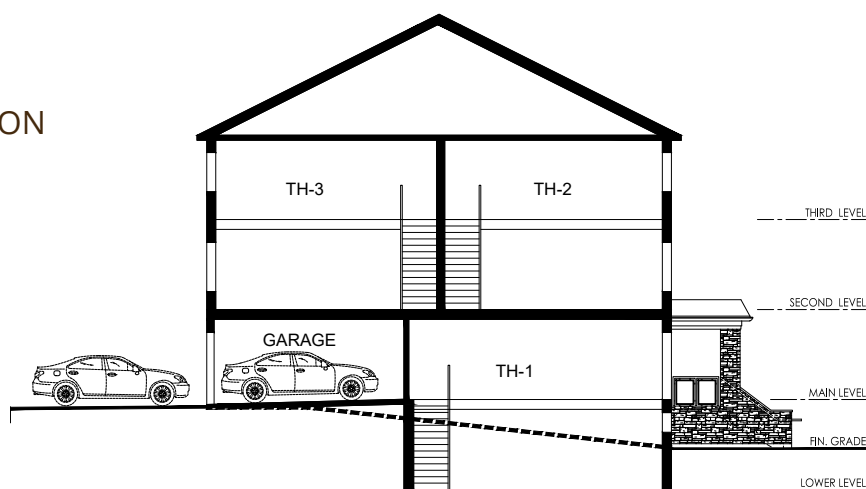
TYPE A
ELEVATION "A2"
REV, End Condition
ARIA [TH1]
EBEN [TH2]
CORAL [TH3]

TYPE A
ELEVATION "A1"
STD
ARIA [TH1]
EBEN [TH2]
CORAL [TH3]

TYPE A
ELEVATION "A1"
REV
ARIA [TH1]
EBEN [TH2]
CORAL [TH3]

TYPE A
ELEVATION "A2"
STD, End Condition
ARIA [TH1]
EBEN [TH2]
CORAL [TH3]

TYPE A
CROSS SECTION



Prices & specifications subject to change without notice. Useable square footage may vary from that stated herein.
Furniture not included. Renderings are artist's concept only E. & O. E. © 2020 Pace Developments. All rights reserved.



FRONT
ELEV.



REAR
ELEV.

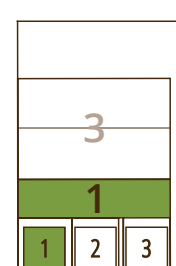
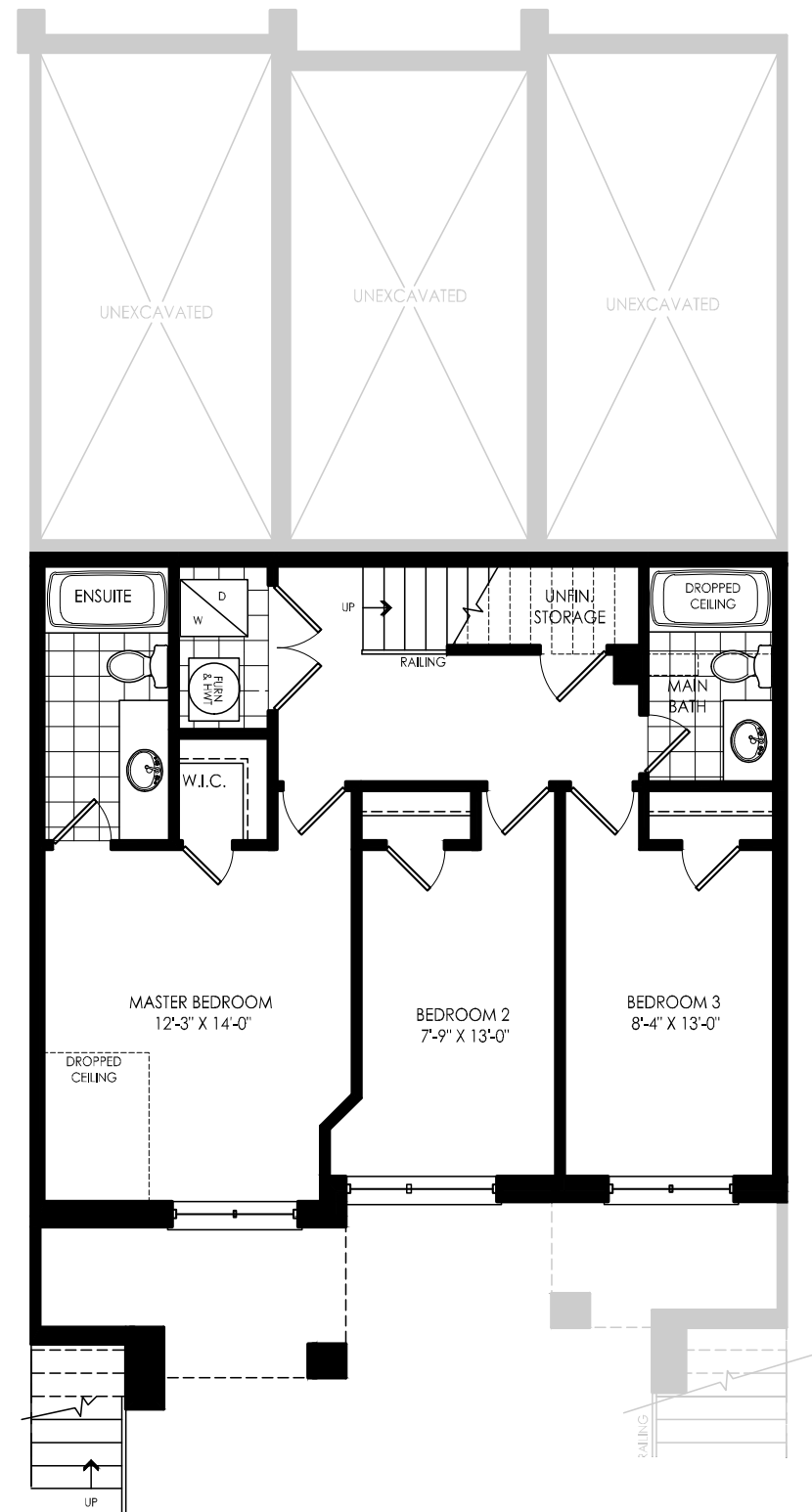
ARIA [TH-1]
EBEN [TH-2]
CORAL [TH-3]



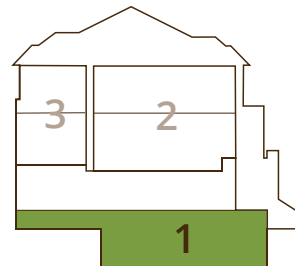


TYPE A / ELEVATION "A1"
ARIA [TH-1] / 1261 Sq.Ft.

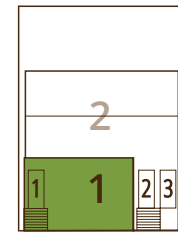
BASEMENT FLOOR / 3 bedroom / 2 bathroom



BACK VIEW



SIDE VIEW

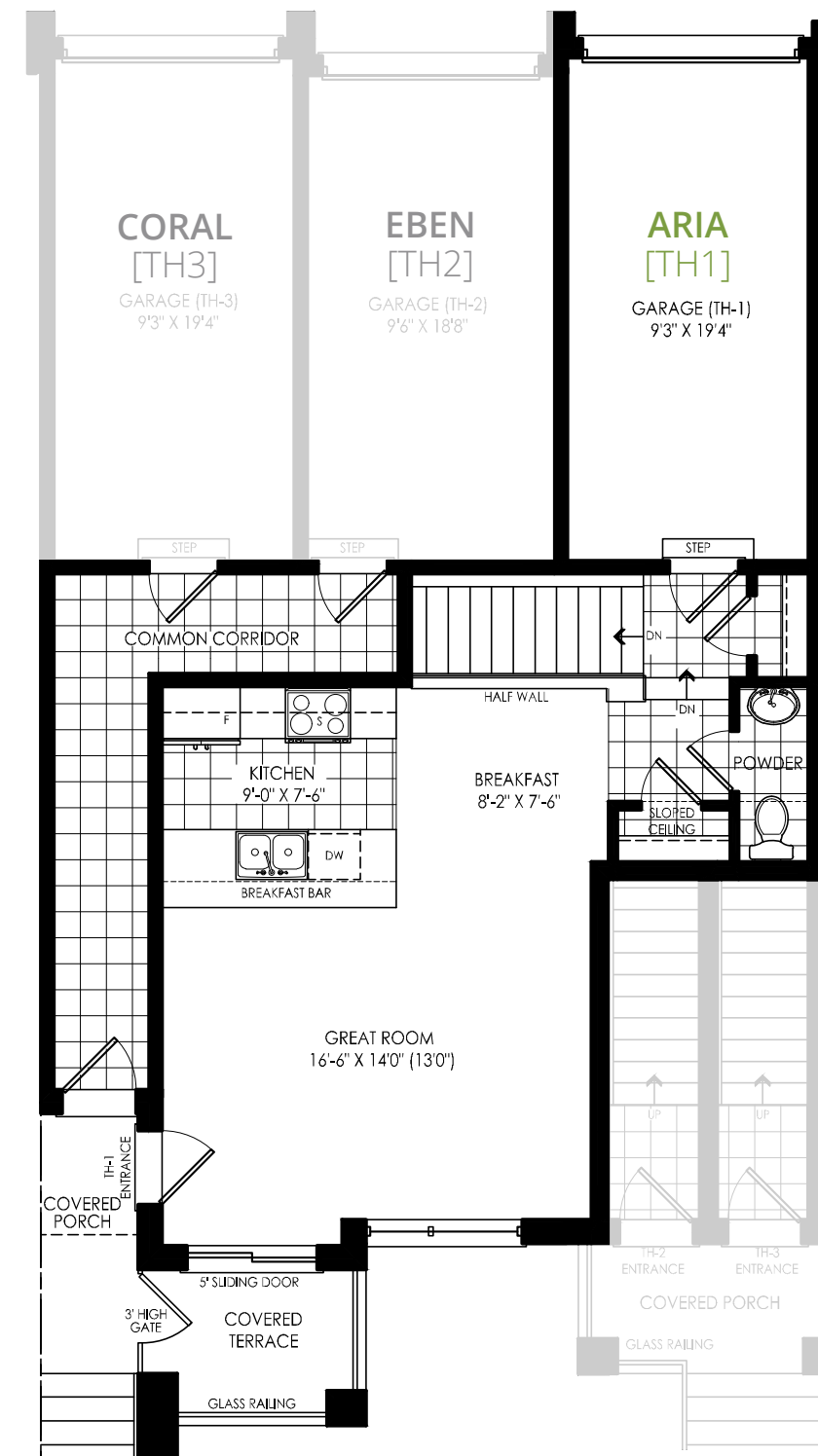


FRONT VIEW

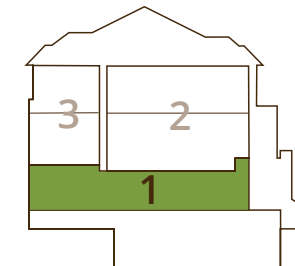


TYPE A / ELEVATION "A1"
ARIA [TH-1] / 1261 Sq.Ft.

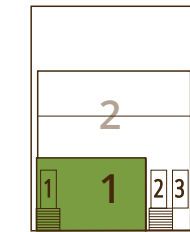
UPPER FLOOR / 1/2 bathroom



BACK VIEW



SIDE VIEW

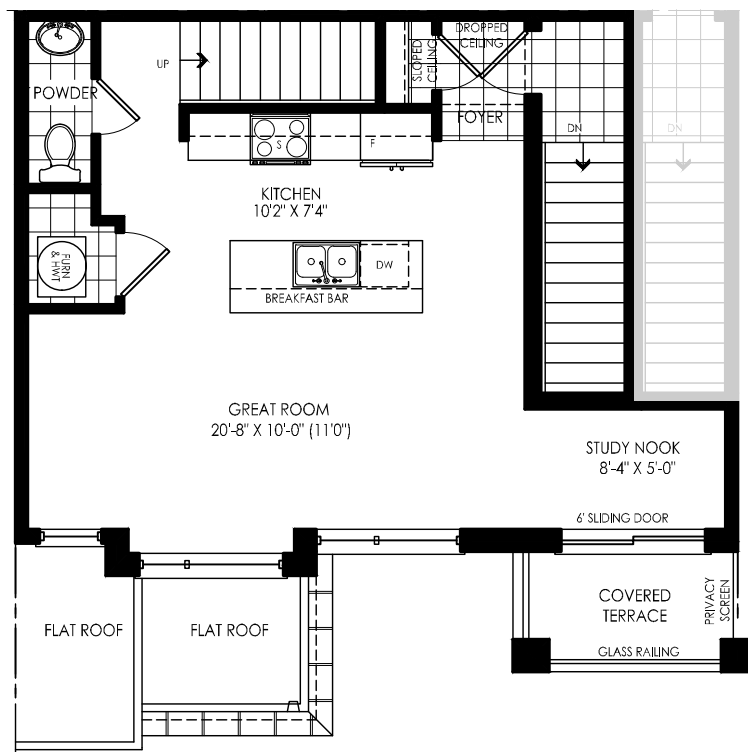
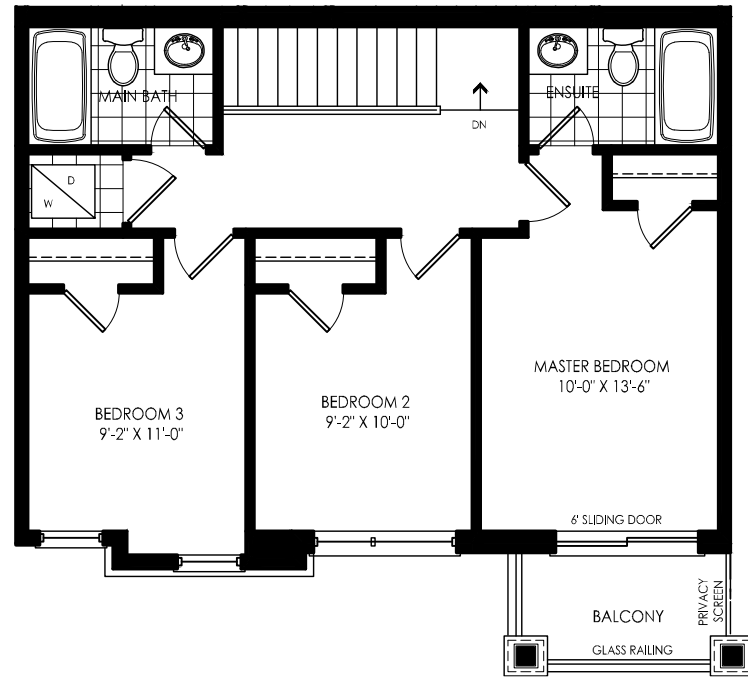


FRONT VIEW

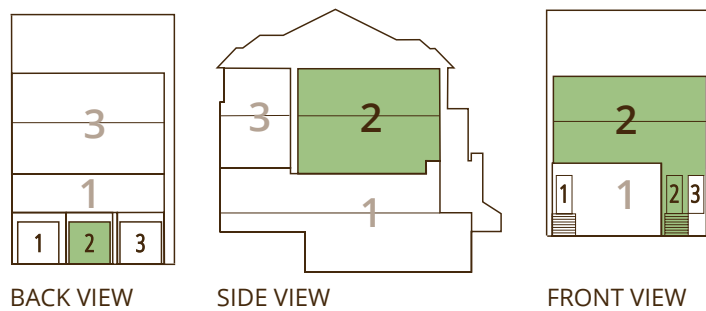


TYPE A / ELEVATION "A1"
EBEN [TH-2] / 1299 Sq.Ft.

UPPER FLOOR / 3 bedroom / 2 bathroom

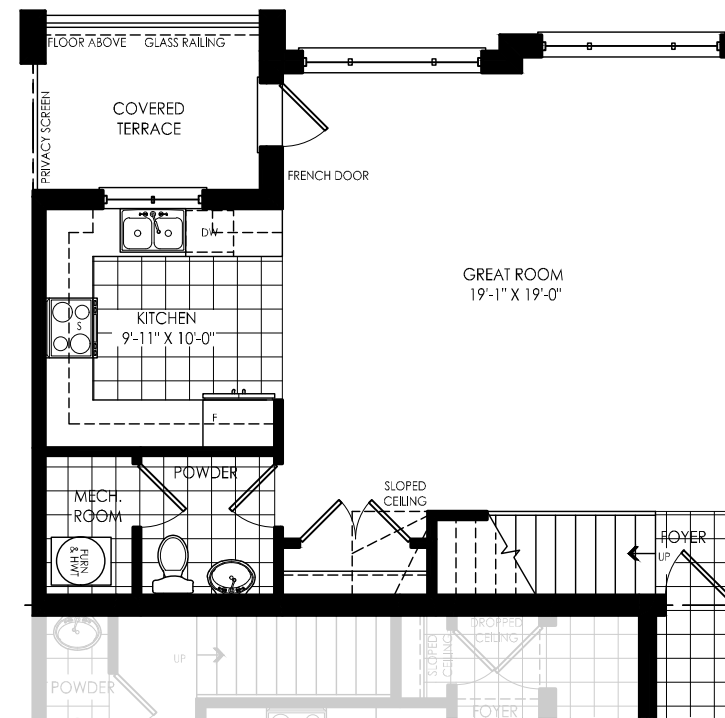
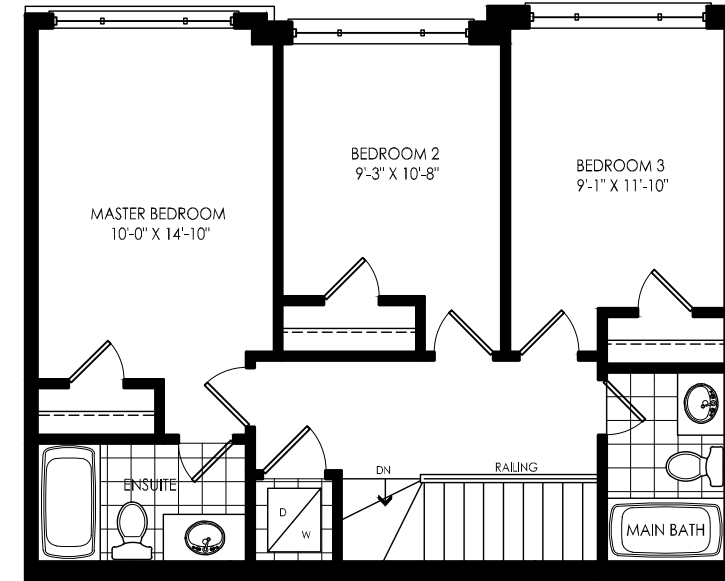


MAIN FLOOR / 1/2 bathroom

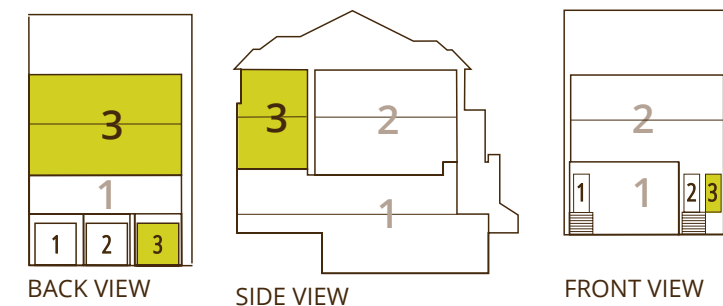


TYPE A / ELEVATION "A1"
CORAL [TH-3] / 1423 Sq.Ft.

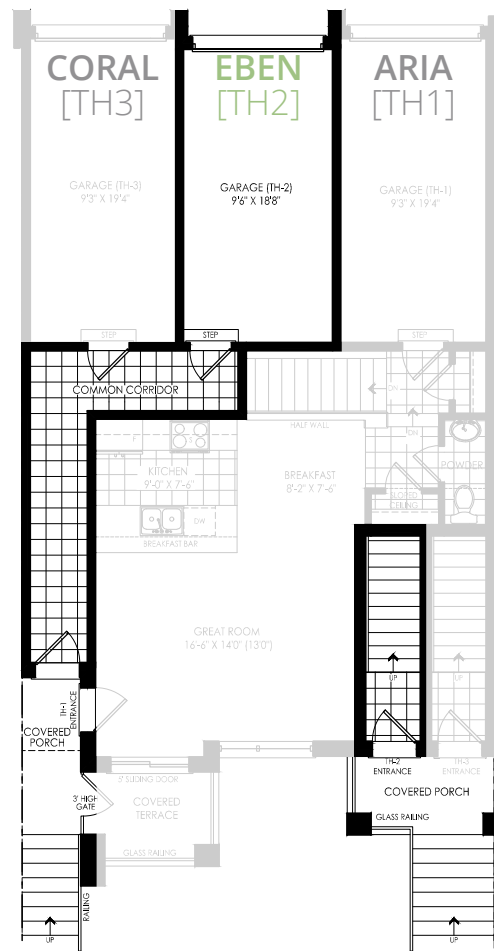
UPPER FLOOR / 3 bedroom / 2 bathroom



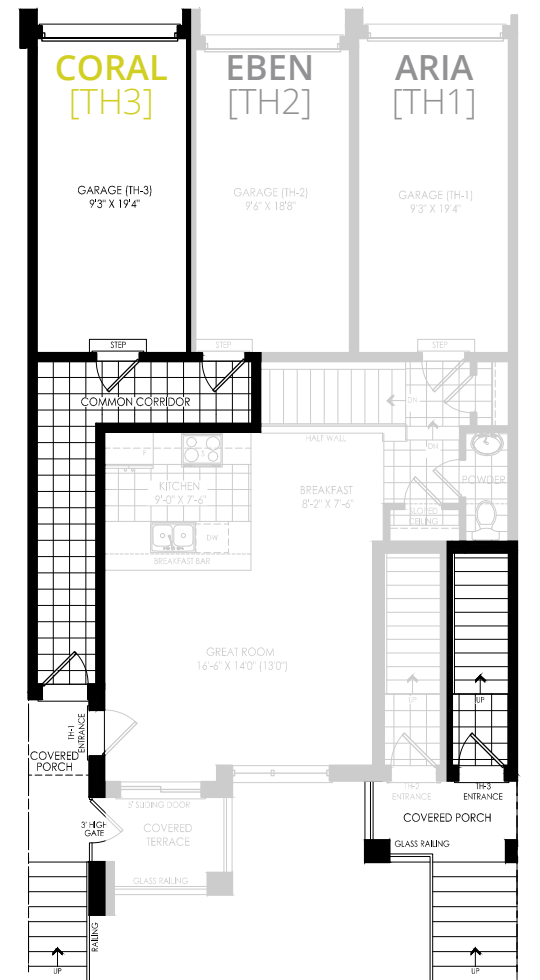
MAIN FLOOR / 1/2 bathroom



GARAGE LEVEL TH-2



GARAGE LEVEL TH-3



TYPE A / **ELEVATION "A2"**
End Condition



TYPE A / **ELEVATION "A2"**
ARIA [TH-1] / 1382 Sq.Ft.

BASEMENT FLOOR / 3 bedroom / 2 bathroom



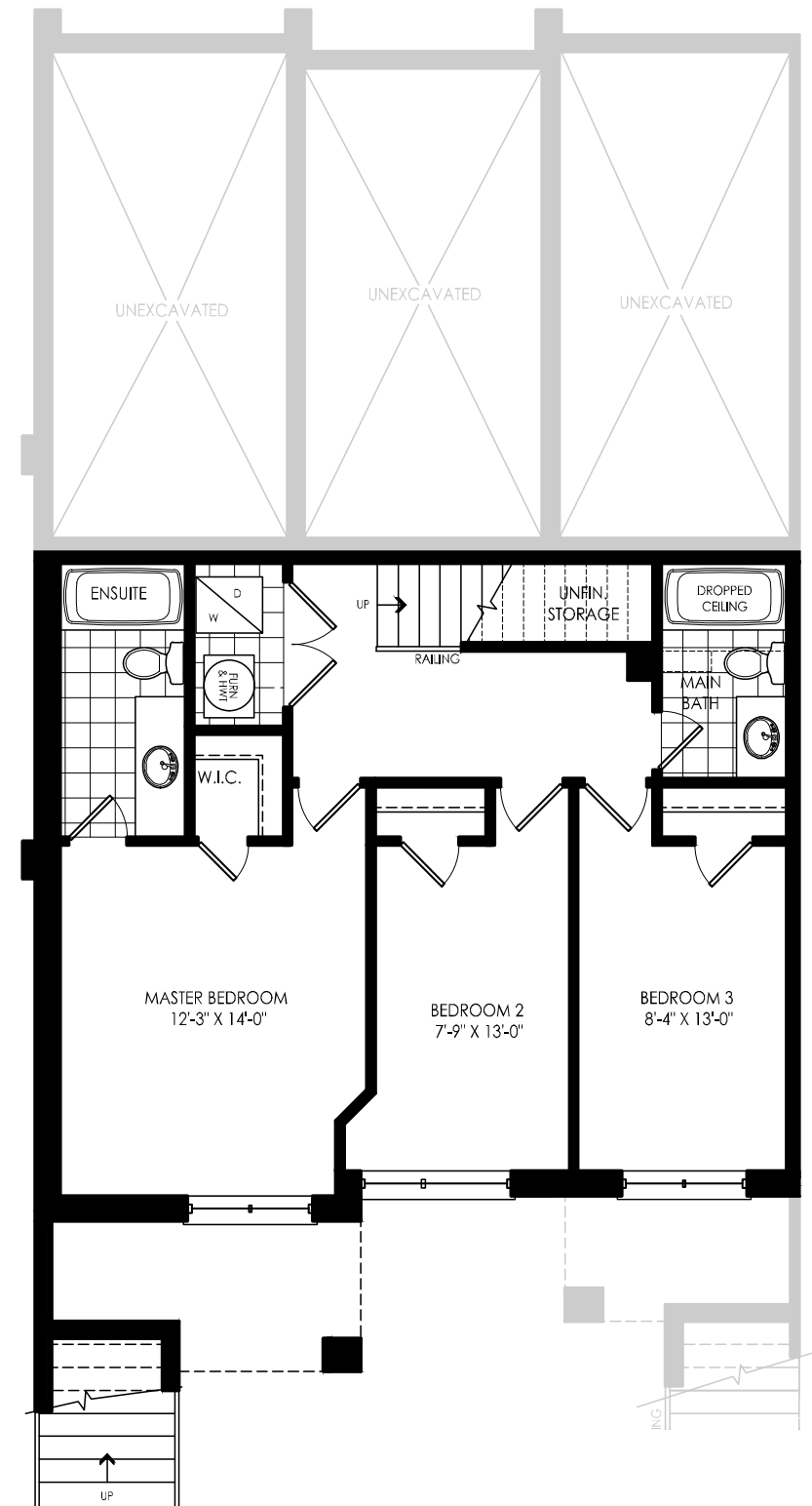
FRONT
ELEV.



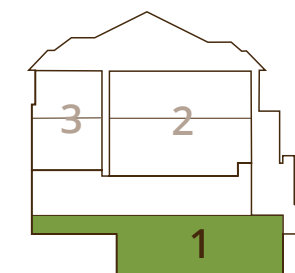
REAR
ELEV.



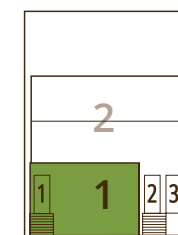
ARIA [TH-1]
EBEN [TH-2]
CORAL [TH-3]



BACK VIEW



SIDE VIEW



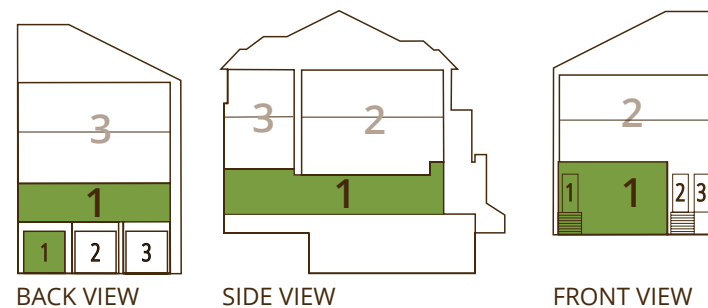
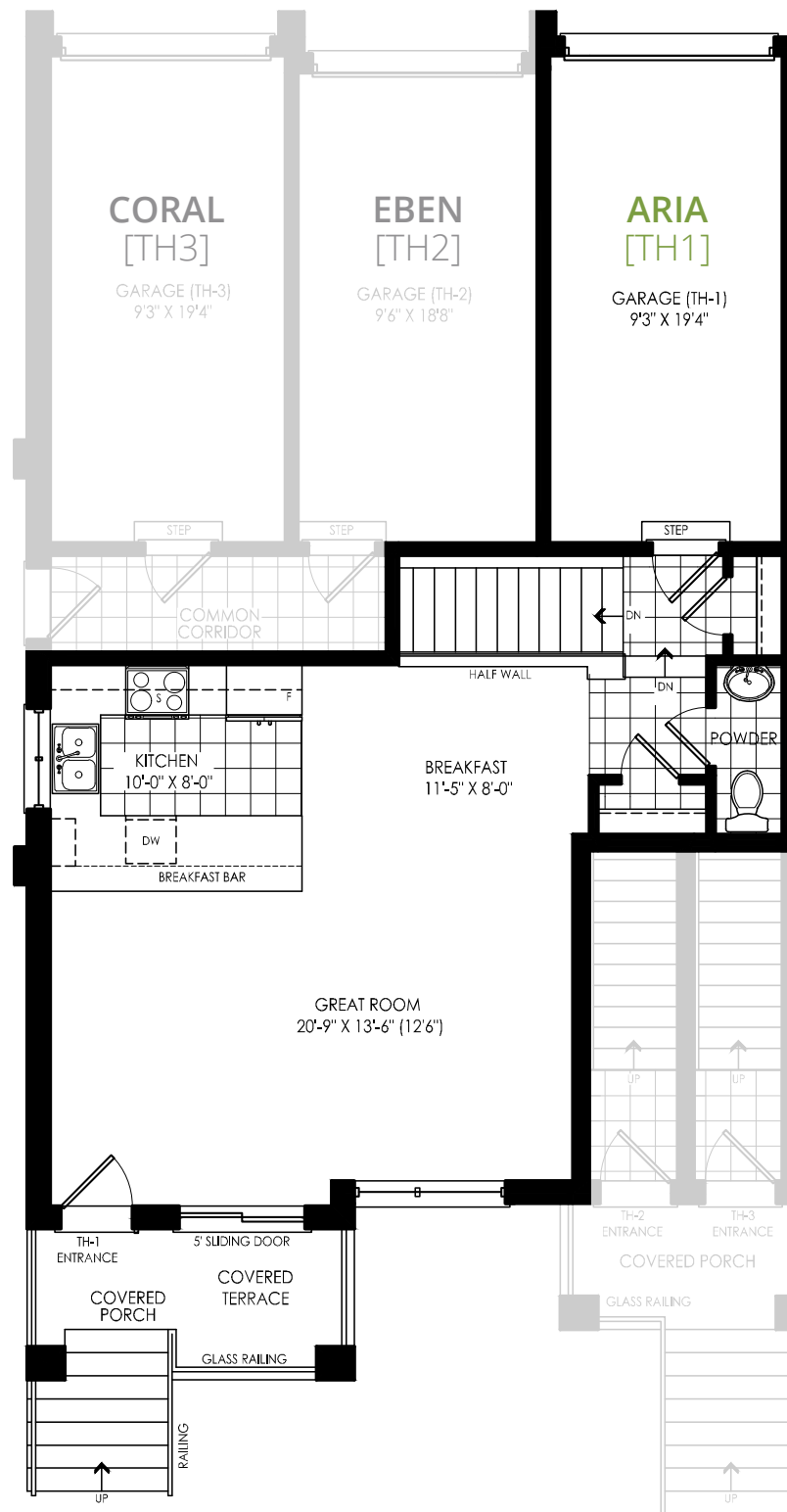
FRONT VIEW

Prices & specifications subject to change without notice. Useable square footage may vary from that stated herein.
Furniture not included. Renderings are artist's concept only E. & O. E. © 2020 Pace Developments. All rights reserved.



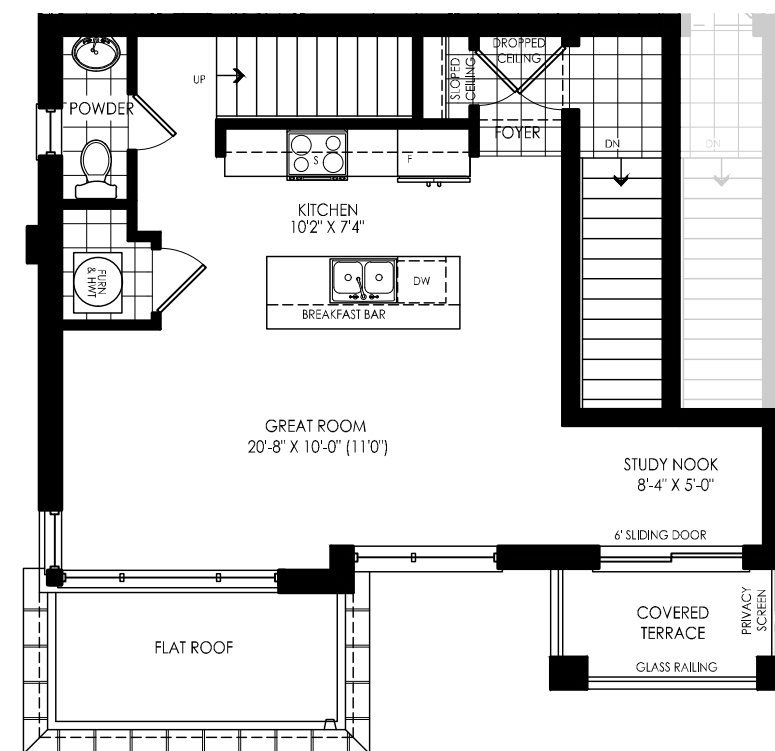
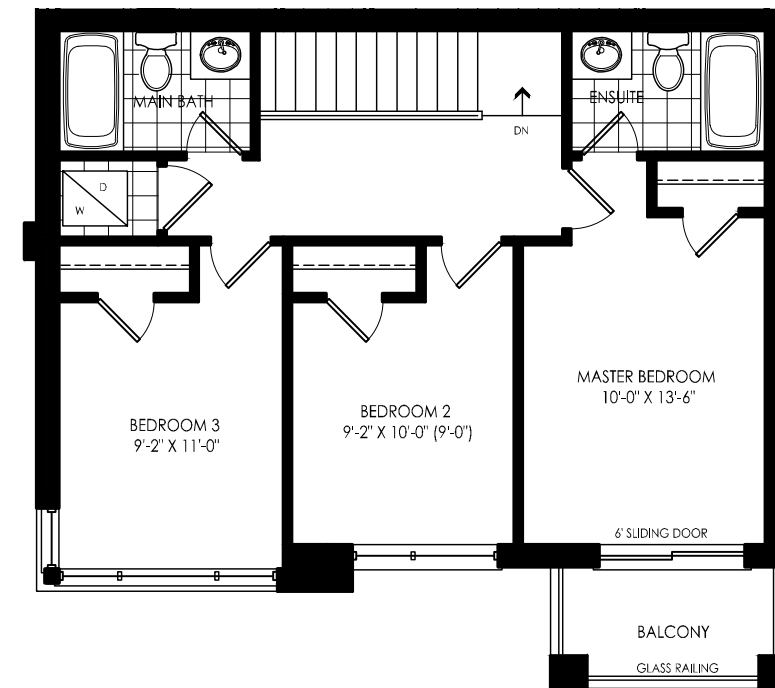
TYPE A / ELEVATION "A2"
ARIA [TH-1] / 1382 Sq.Ft.

LOWER FLOOR / 1/2 bathroom

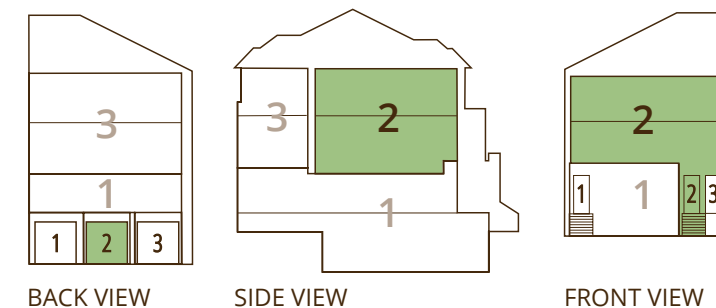


TYPE A / ELEVATION "A2"
EBEN [TH-2] / 1332 Sq.Ft.

UPPER FLOOR / 3 bedroom / 2 bathroom



MAIN FLOOR / 1/2 bathroom

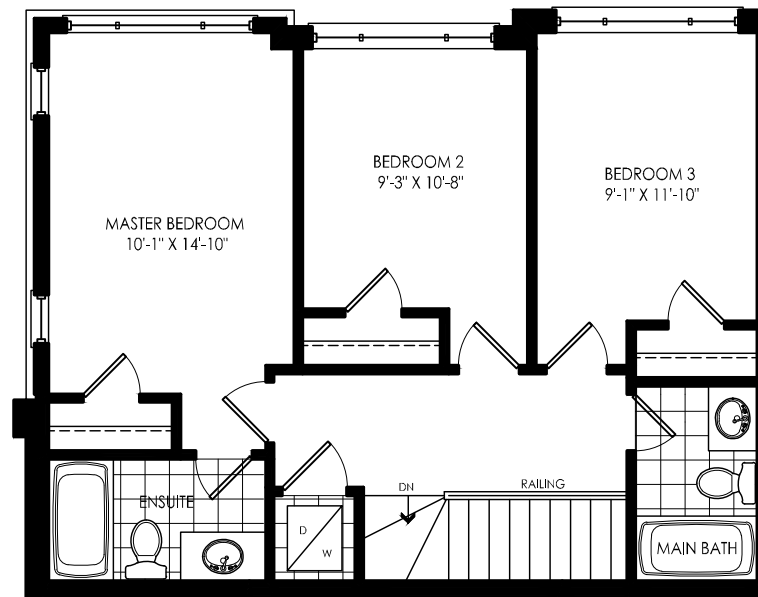




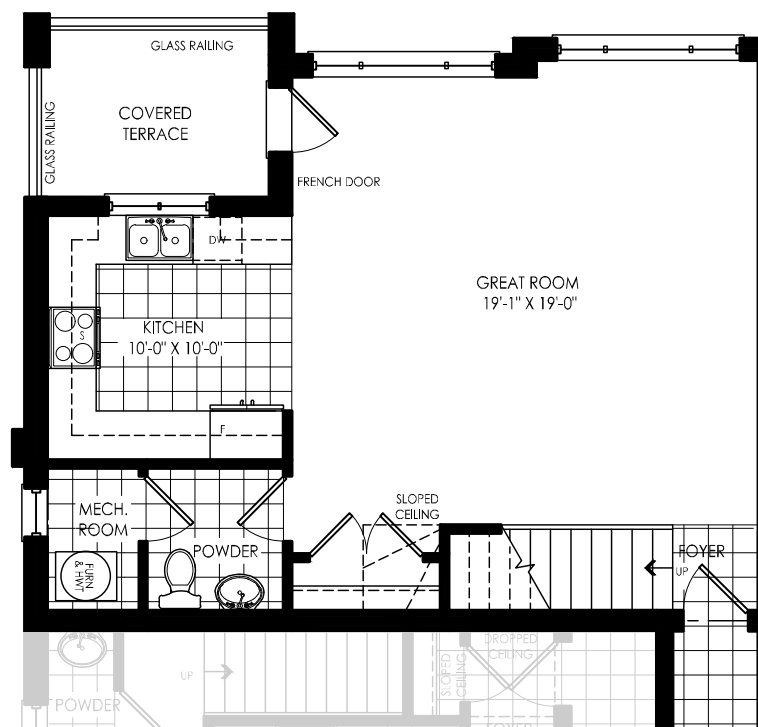
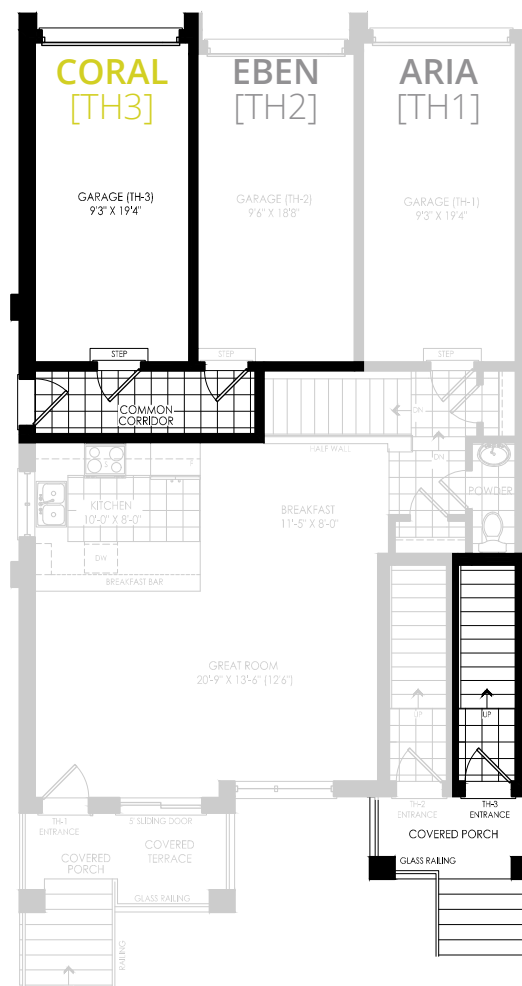
TYPE A / **ELEVATION "A2"**
Upgraded End Condition

TYPE A / **ELEVATION "A2"**
CORAL [TH-3] / 1445 Sq.Ft.

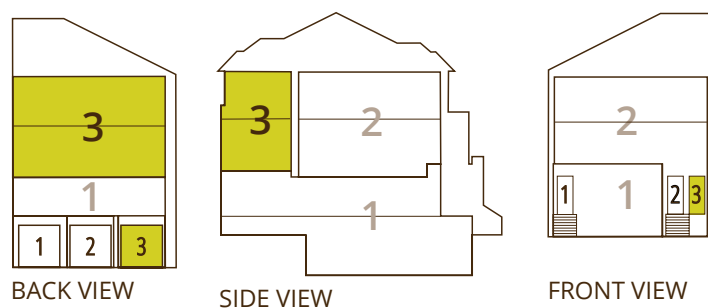
UPPER FLOOR / 3 bedroom / 2 bathroom



GARAGE LEVEL TH-3



MAIN FLOOR / 1/2 bathroom



FRONT
ELEV.



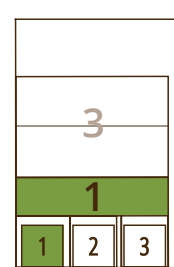
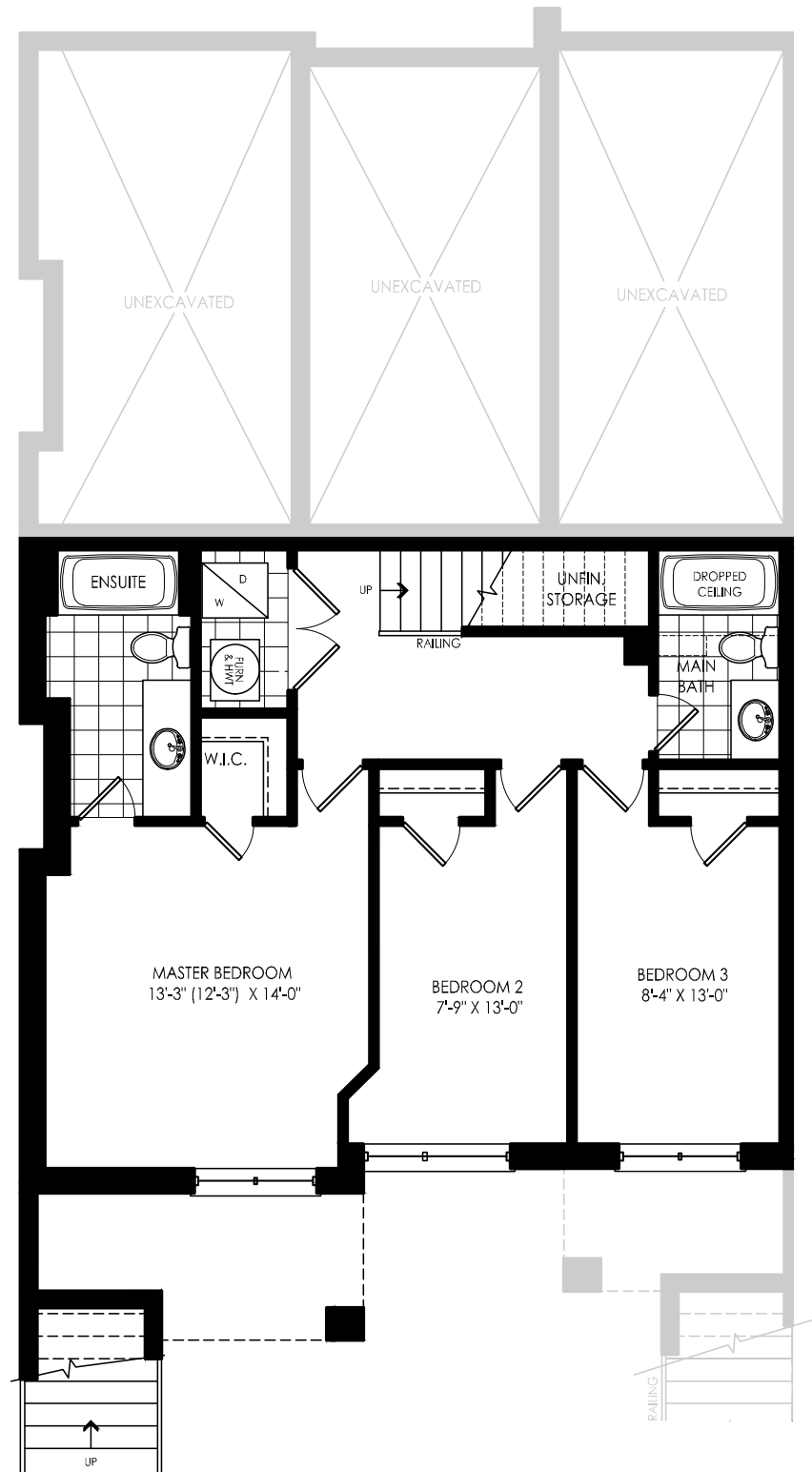
REAR
ELEV.

ARIA [TH-1]
EBEN [TH-2]
CORAL [TH-3]

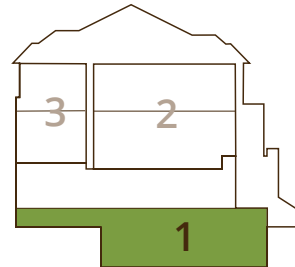


TYPE A / ELEVATION "A2 UPGRADE"
ARIA [TH-1] / 1421 Sq.Ft.

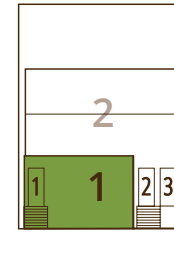
BASEMENT FLOOR / 3 bedroom / 2 bathroom



BACK VIEW



SIDE VIEW

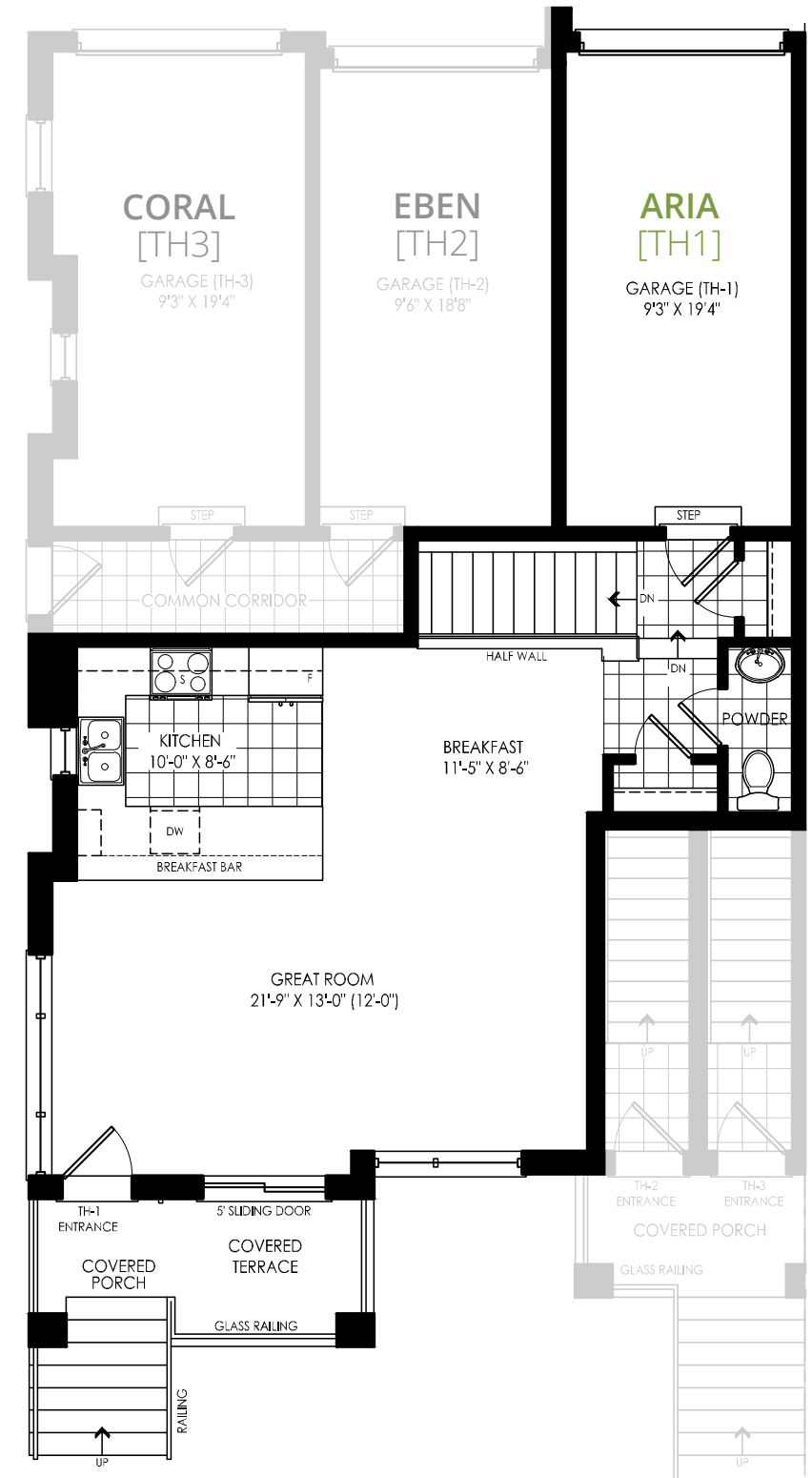


FRONT VIEW

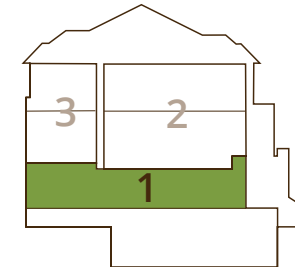


TYPE A / ELEVATION "A2 UPGRADE"
ARIA [TH-1] / 1421 Sq.Ft.

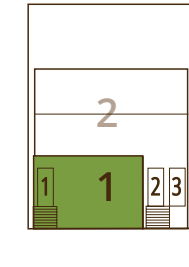
UPPER FLOOR / 1/2 bathroom



BACK VIEW



SIDE VIEW

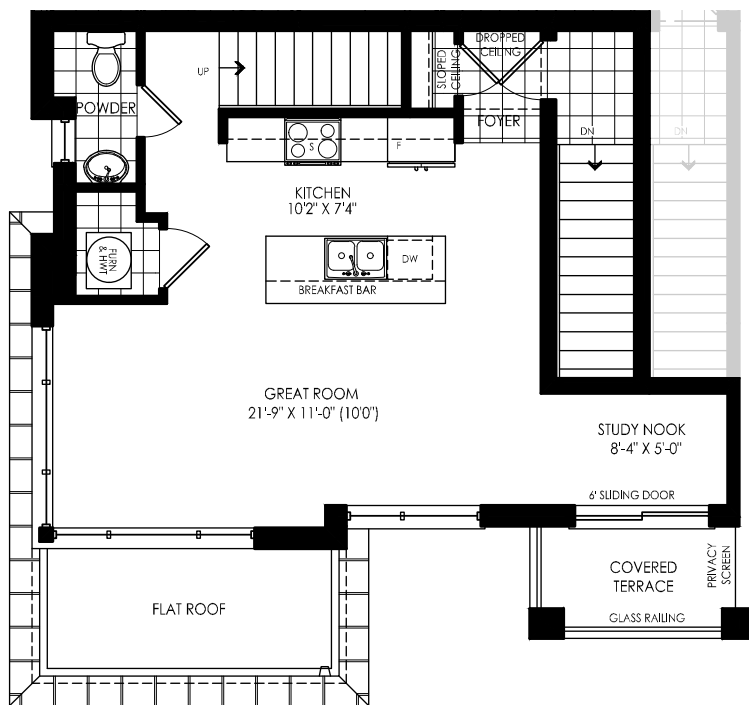
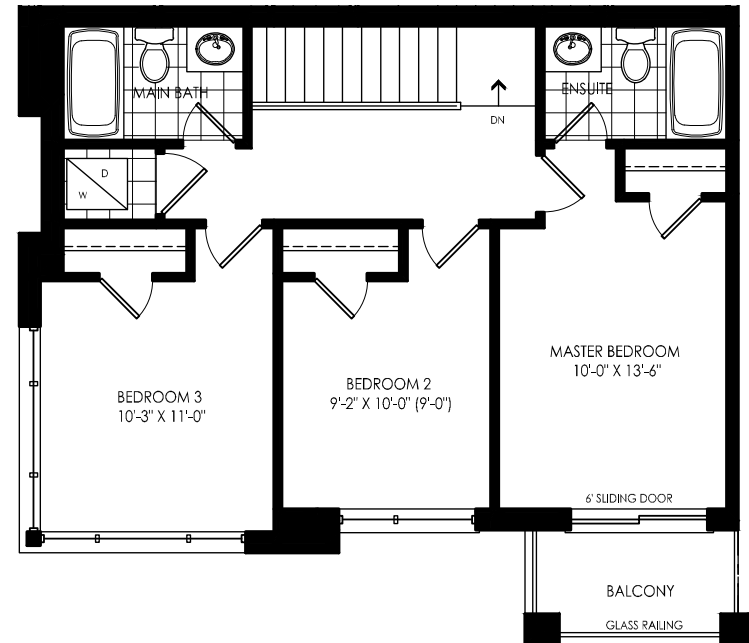


FRONT VIEW

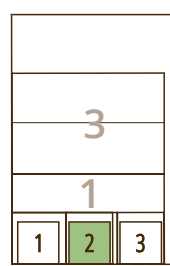


TYPE A / ELEVATION “A2 UPGRADE”
EBEN [TH-2] / 1369 Sq.Ft.

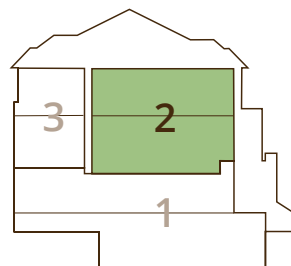
UPPER FLOOR / 3 bedroom / 2 bathroom



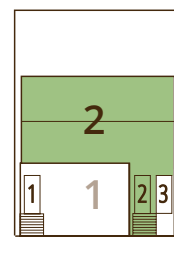
MAIN FLOOR / 1/2 bathroom



BACK VIEW



SIDE VIEW

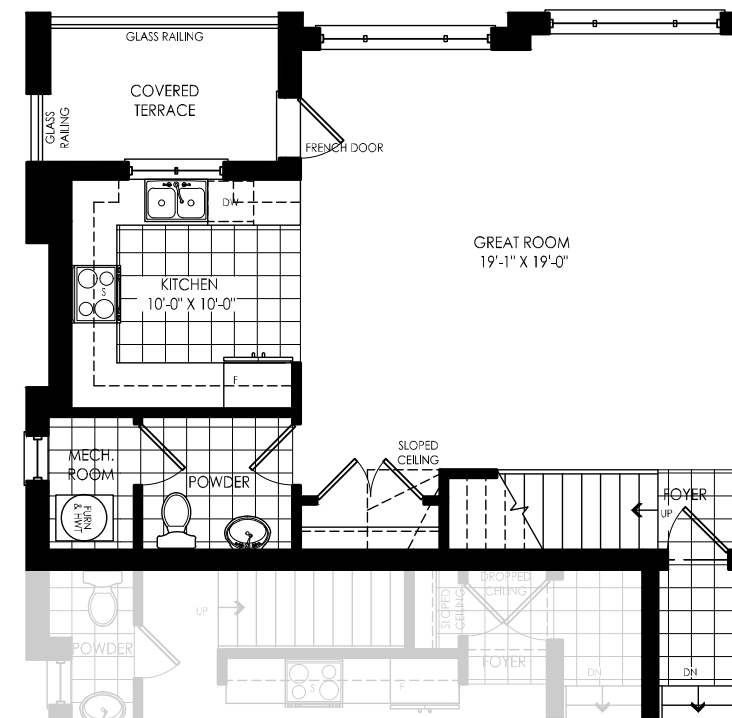
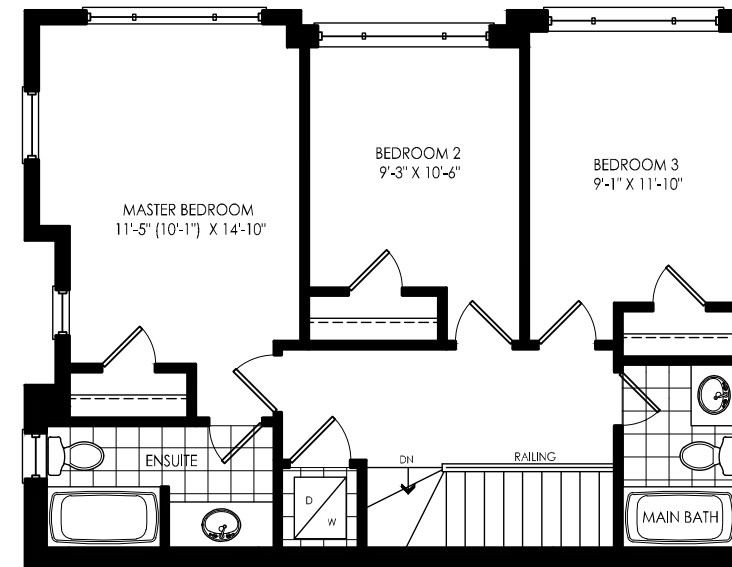


FRONT VIEW

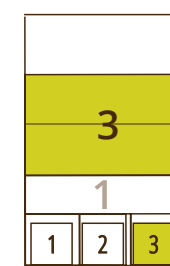


TYPE A / ELEVATION “A2 UPGRADE”
CORAL [TH-3] / 1471 Sq.Ft.

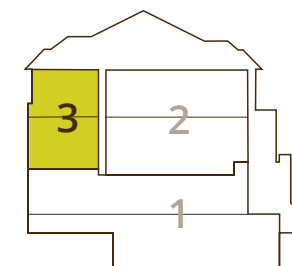
UPPER FLOOR / 3 bedroom / 2 bathroom



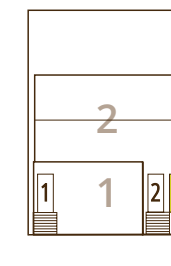
MAIN FLOOR / 1/2 bathroom



BACK VIEW

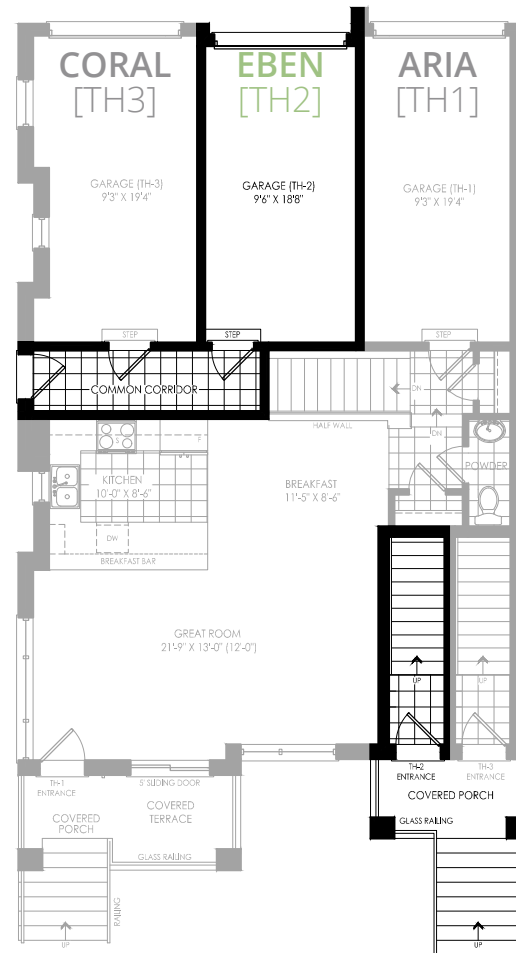


SIDE VIEW

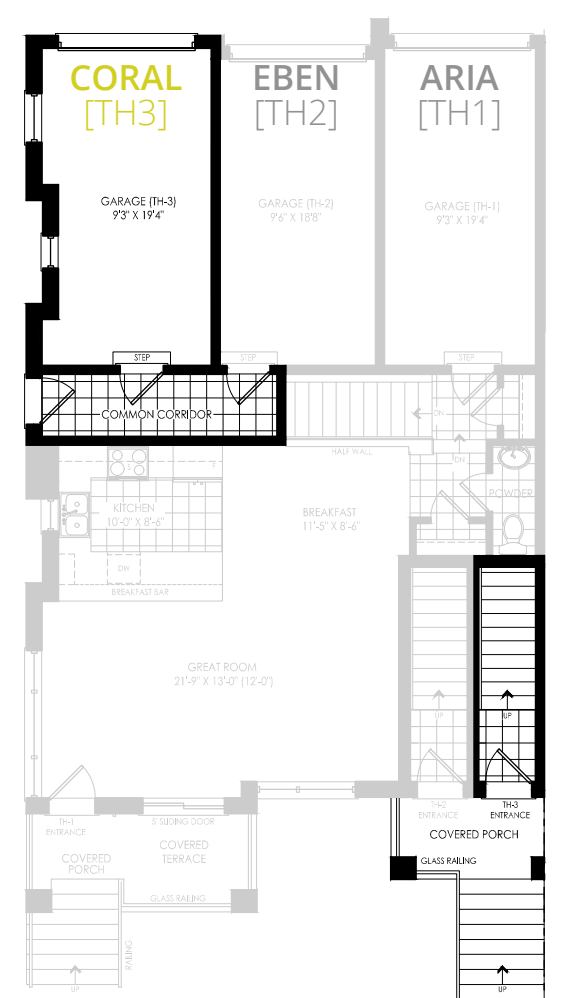


FRONT VIEW

GARAGE LEVEL TH-2



GARAGE LEVEL TH-3



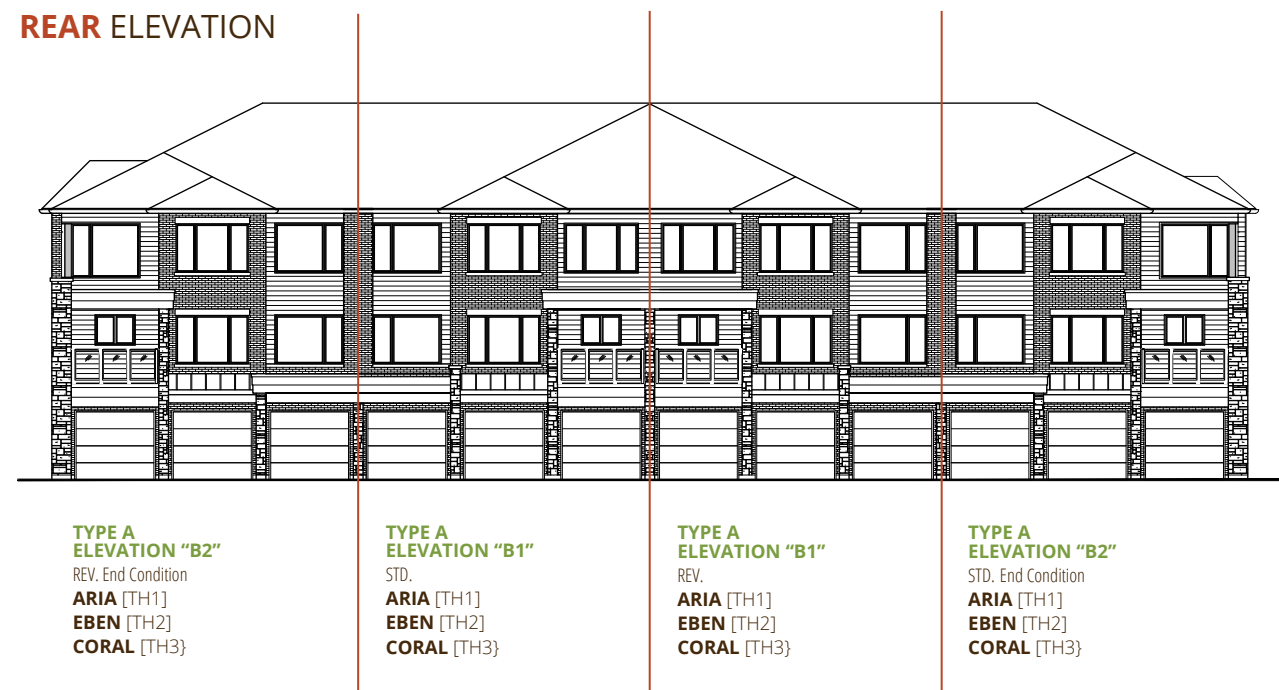
TYPE A / URBAN TOWNS

ELEVATION B

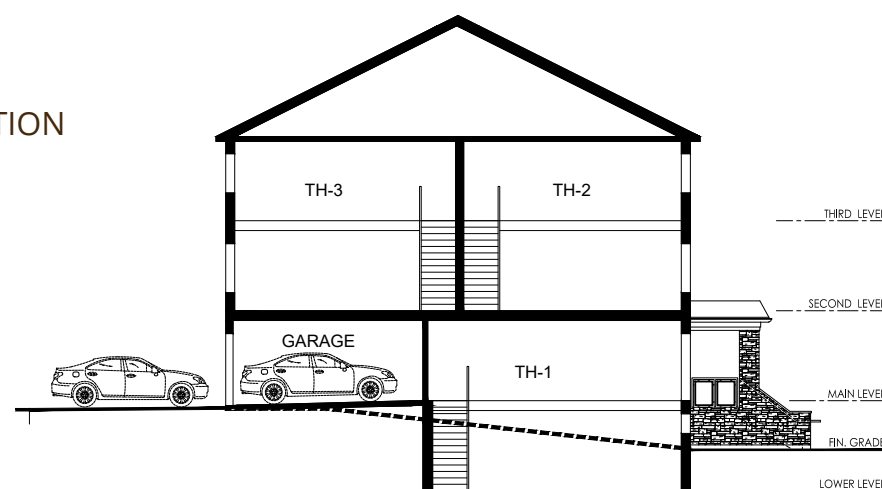
FRONT ELEVATION



REAR ELEVATION



TYPE A
CROSS SECTION



Prices & specifications subject to change without notice. Useable square footage may vary from that stated herein. Furniture not included. Renderings are artist's concept only E. & O. E. © 2020 Pace Developments. All rights reserved.



FRONT
ELEV.



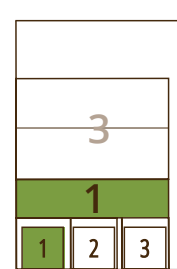
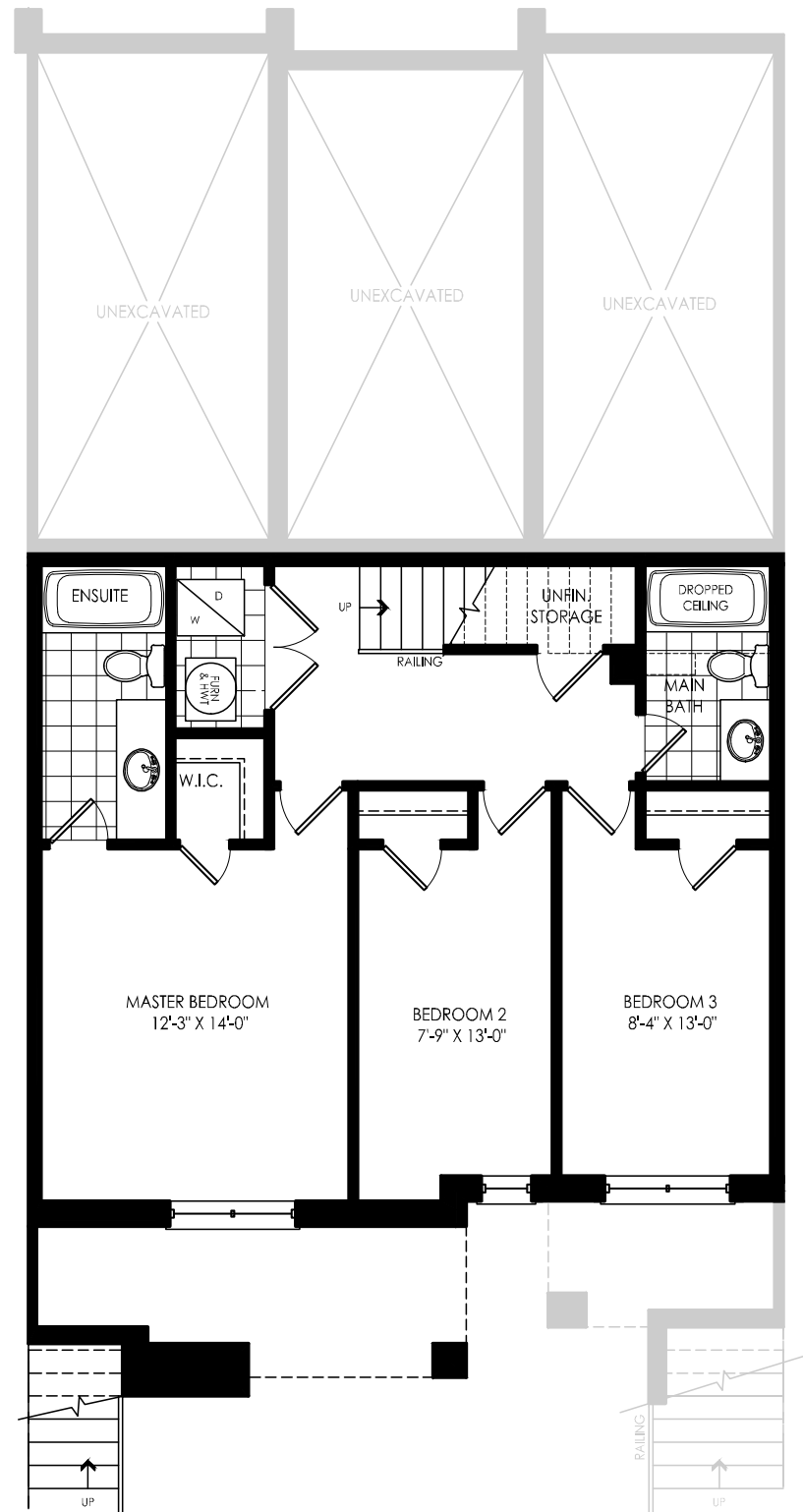
REAR
ELEV.

ARIA [TH-1]
EBEN [TH-2]
CORAL [TH-3]

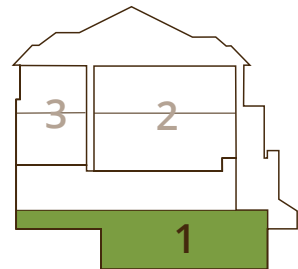


TYPE A / ELEVATION "B1"
ARIA [TH-1] / 1276 Sq.Ft.

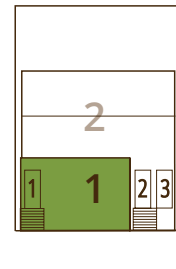
BASEMENT FLOOR / 3 bedroom / 2 bathroom



BACK VIEW



SIDE VIEW

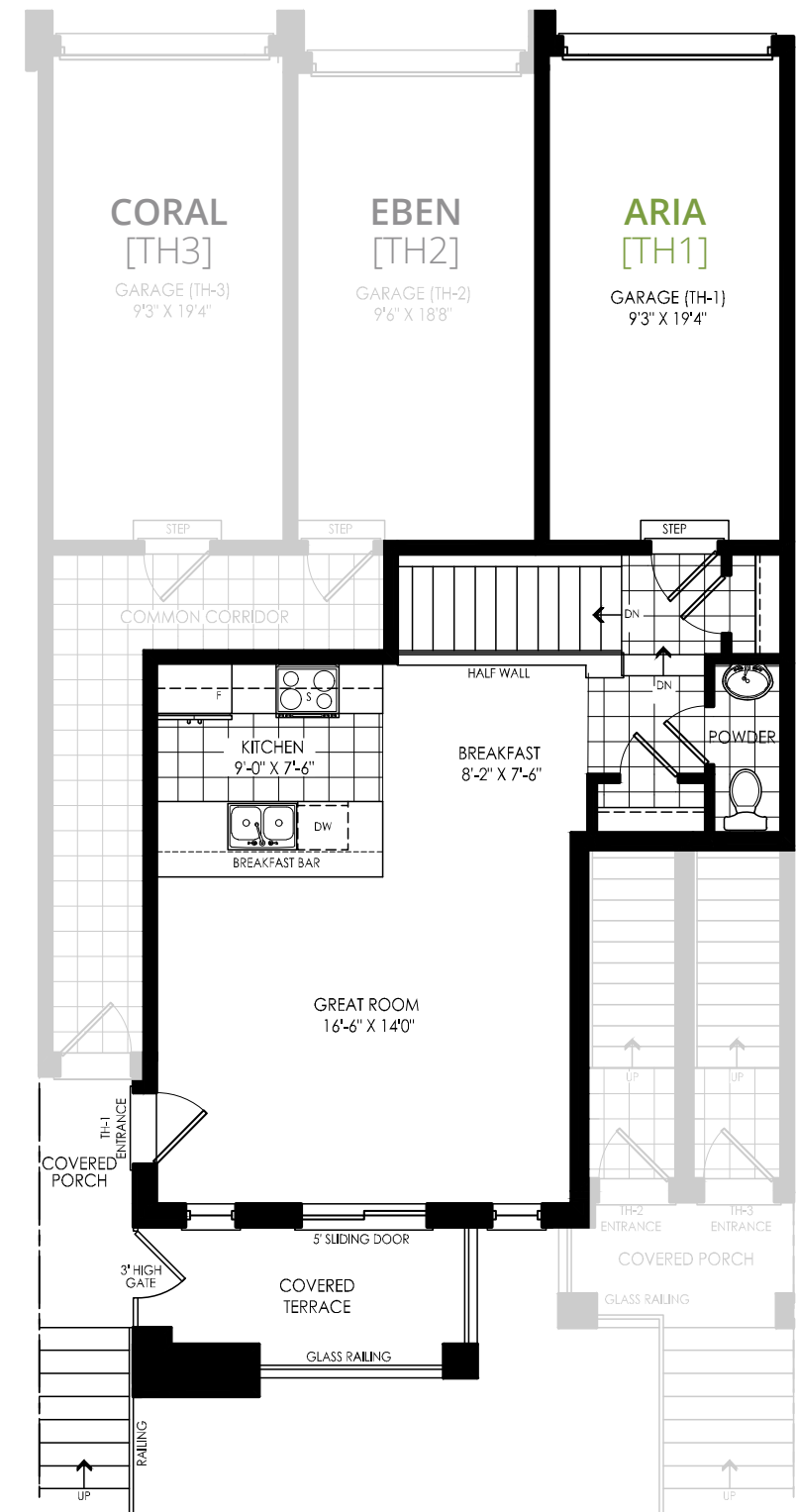


FRONT VIEW

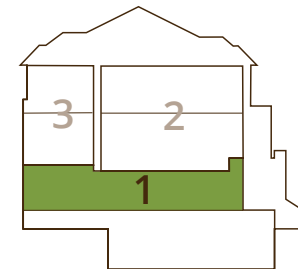


TYPE A / ELEVATION "B1"
ARIA [TH-1] / 1276 Sq.Ft.

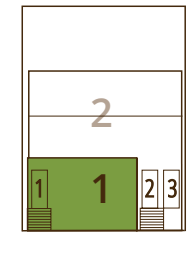
LOWER FLOOR / 1/2 bathroom



BACK VIEW



SIDE VIEW

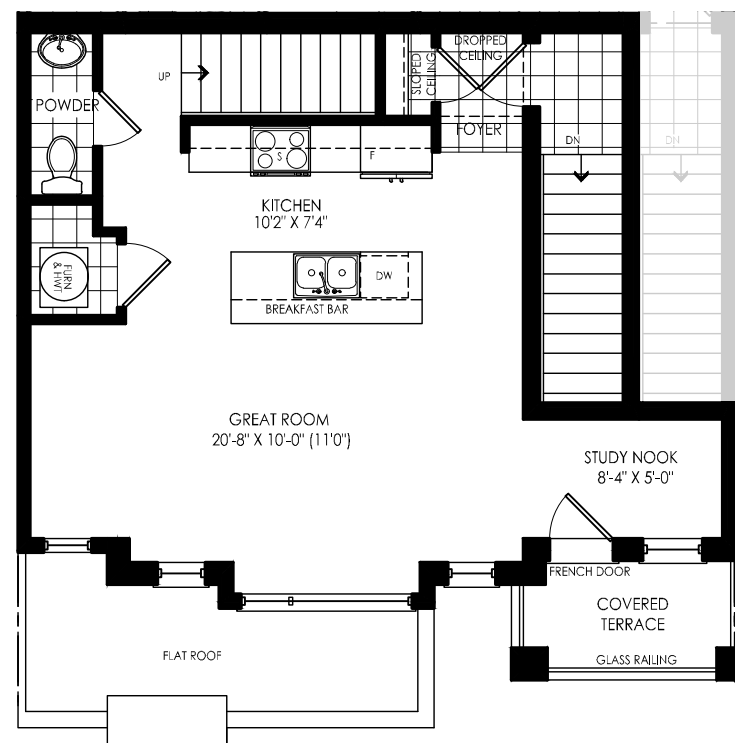
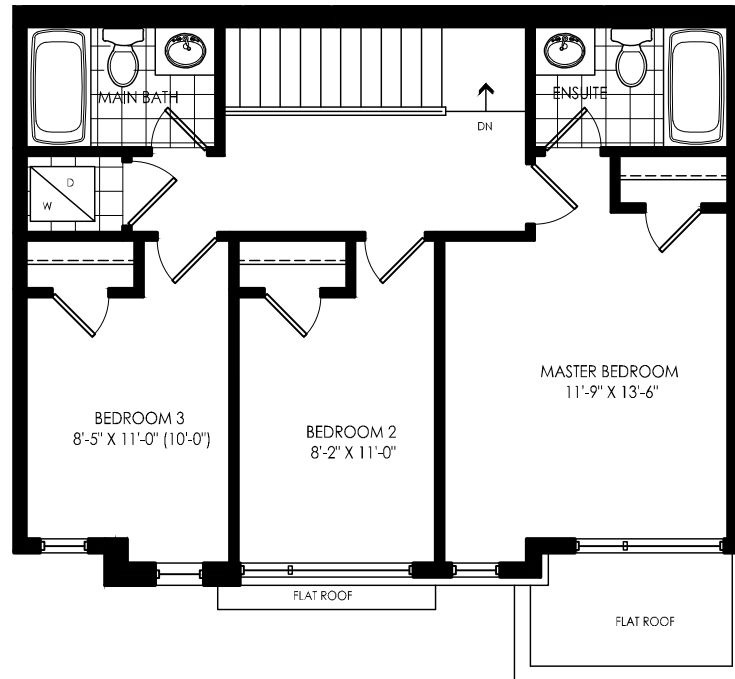


FRONT VIEW

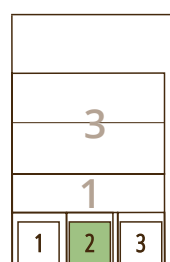


TYPE A / ELEVATION "B1"
EBEN [TH-2] / 1330 Sq.Ft.

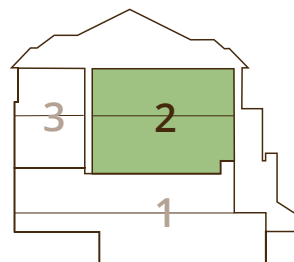
UPPER FLOOR / 3 bedroom / 2 bathroom



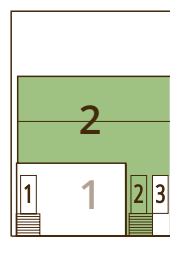
MAIN FLOOR / 1/2 bathroom



BACK VIEW



SIDE VIEW

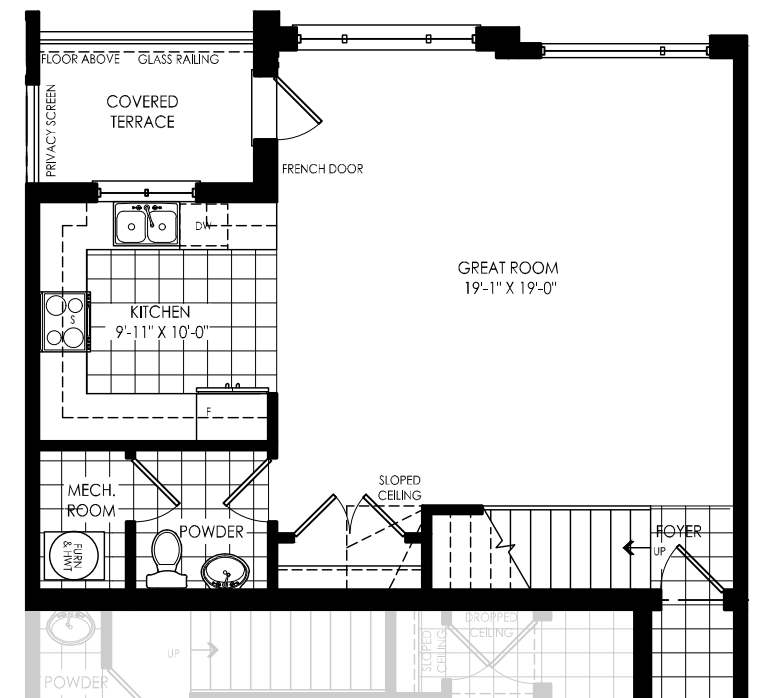
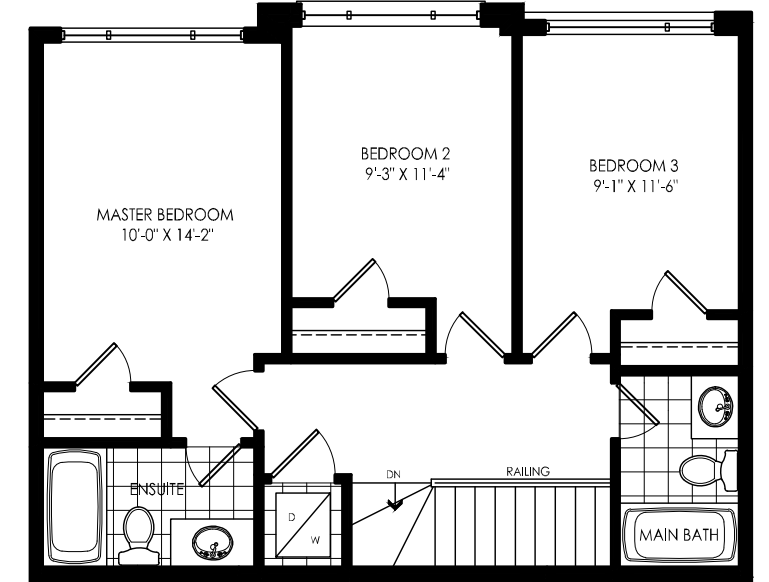


FRONT VIEW

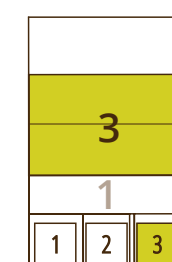


TYPE A / ELEVATION "B1"
CORAL [TH-3] / 1420 Sq.Ft.

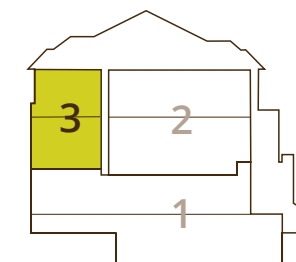
UPPER FLOOR / 3 bedroom / 2 bathroom



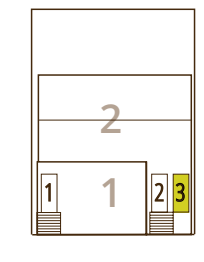
MAIN FLOOR / 1/2 bathroom



BACK VIEW



SIDE VIEW



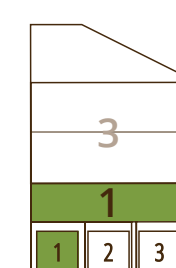
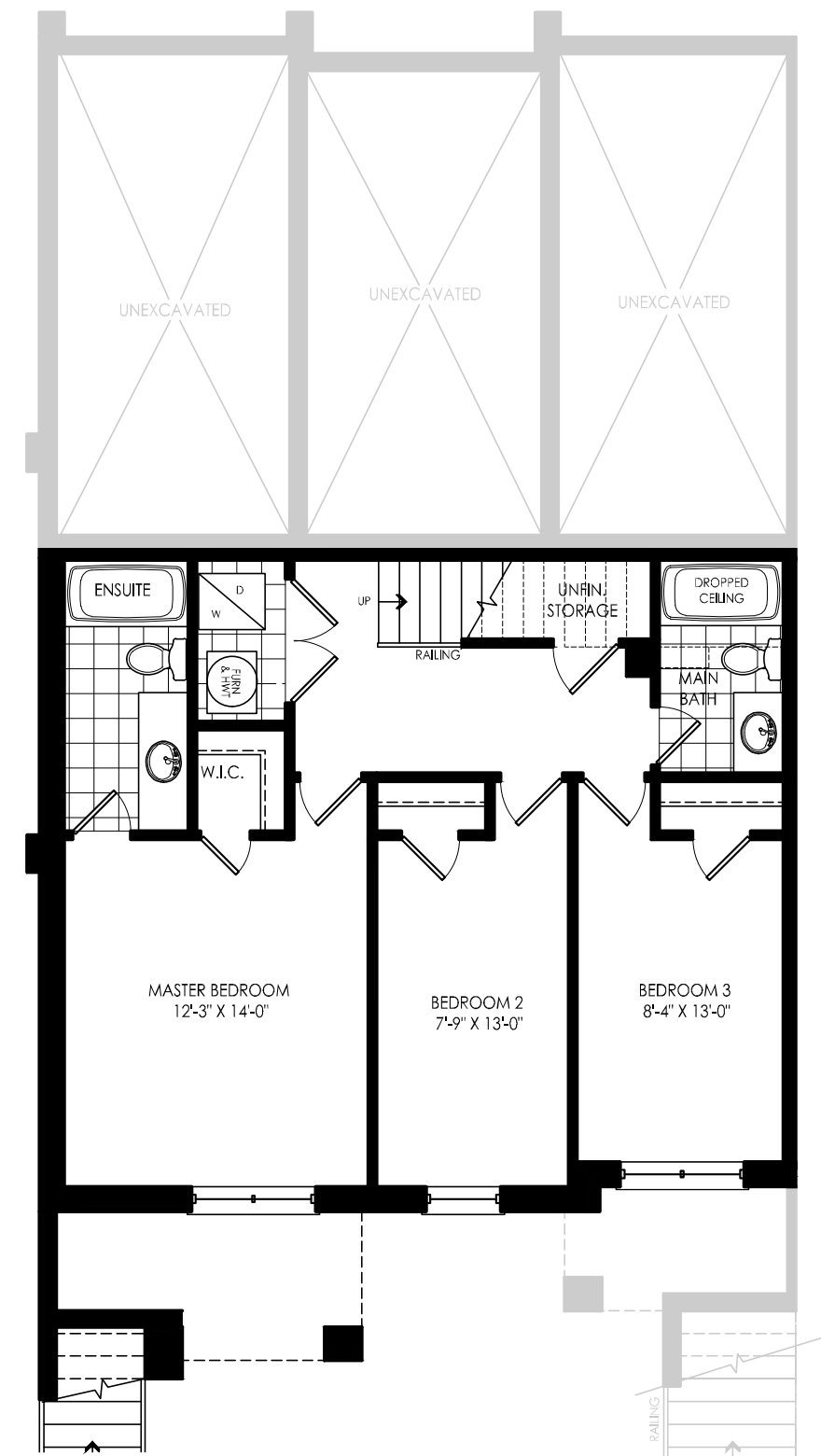
FRONT VIEW

TYPE A / ELEVATION "B2"
End Condition

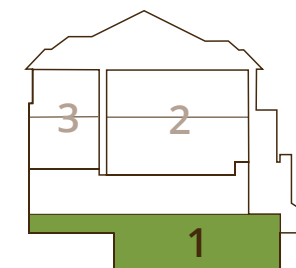


TYPE A / ELEVATION "B2"
ARIA [TH-1] / 1393 Sq.Ft.

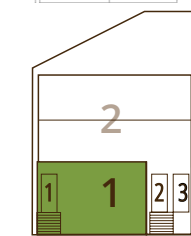
BASEMENT FLOOR / 3 bedroom / 2 bathroom



BACK VIEW



SIDE VIEW



FRONT VIEW



FRONT
ELEV.



REAR
ELEV.



ARIA [TH-1]
EBEN [TH-2]
CORAL [TH-3]

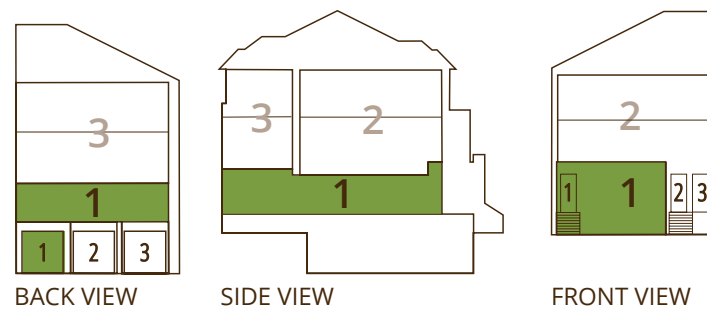
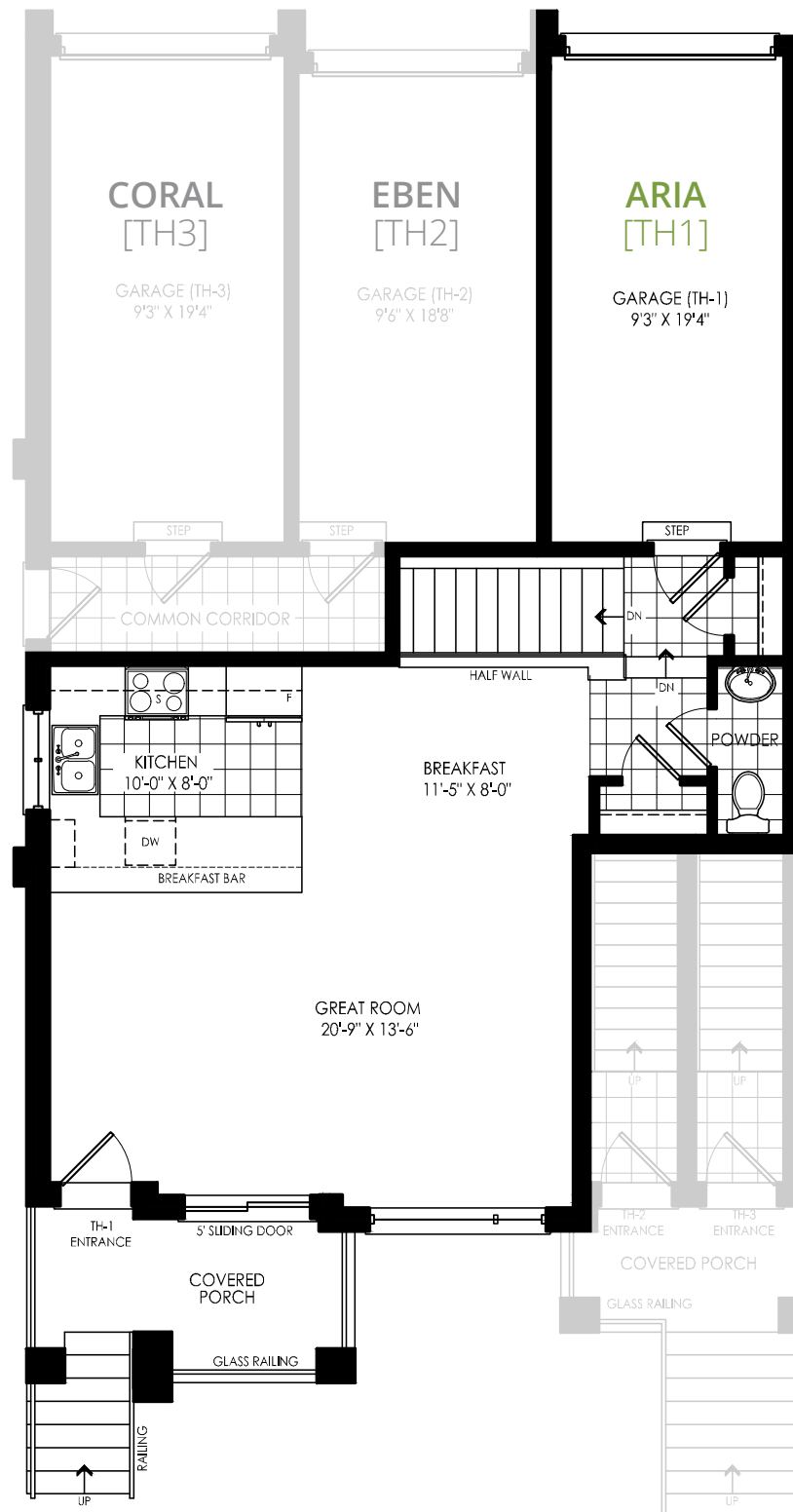


Prices & specifications subject to change without notice. Useable square footage may vary from that stated herein. Furniture not included. Renderings are artist's concept only E. & O. E. © 2020 Pace Developments. All rights reserved.



TYPE A / ELEVATION "B2"
ARIA [TH-1] / 1393 Sq.Ft.

LOWER FLOOR / 1/2 bathroom



BACK VIEW

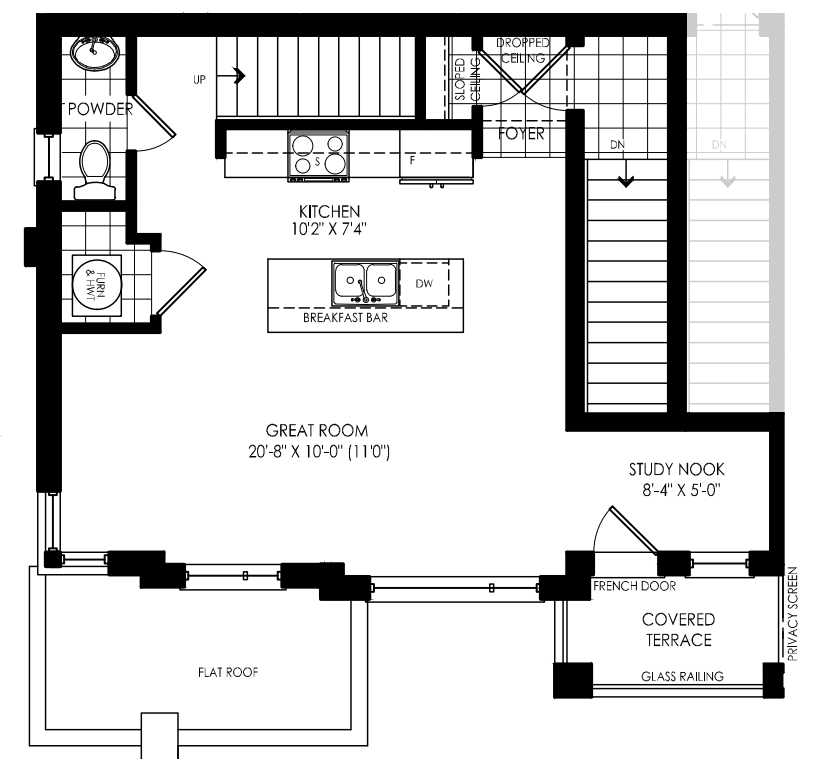
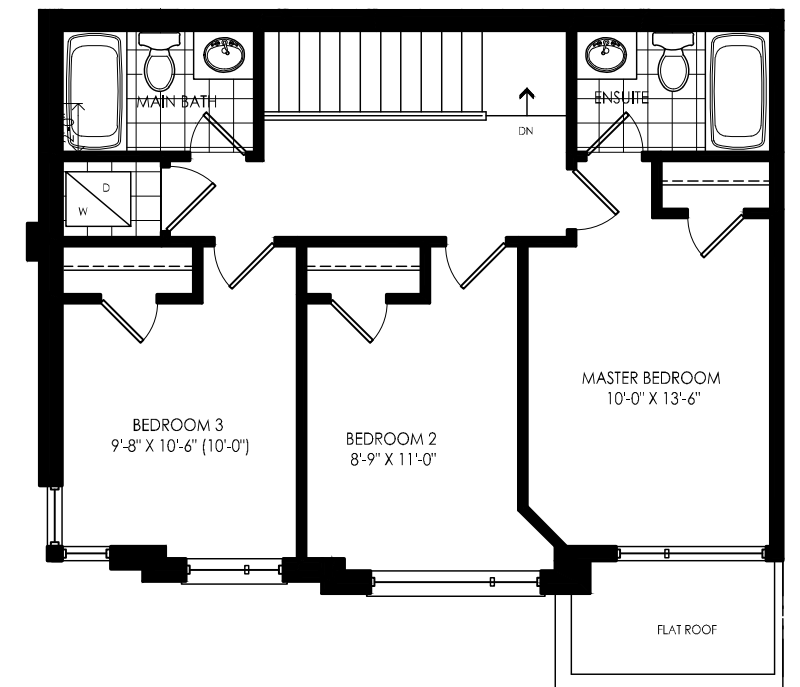
SIDE VIEW

FRONT VIEW

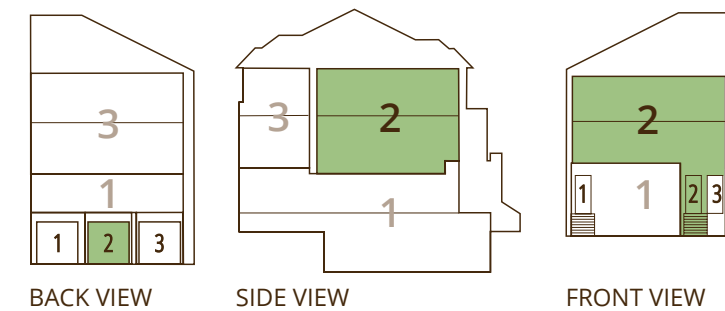


TYPE A / ELEVATION "B2"
EBEN [TH-2] / 1331 Sq.Ft.

UPPER FLOOR / 3 bedroom / 2 bathroom



MAIN FLOOR / 1/2 bathroom



BACK VIEW

SIDE VIEW

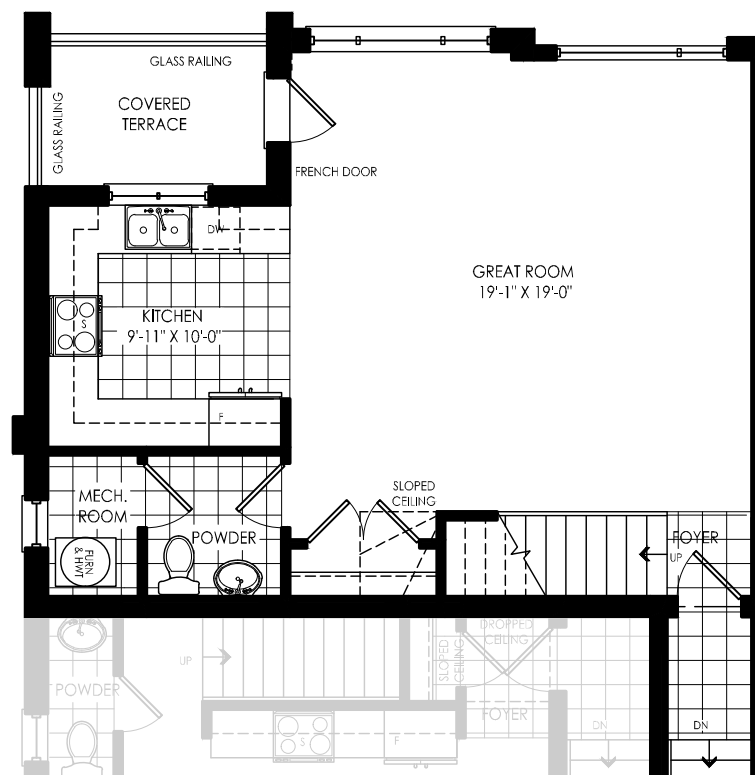
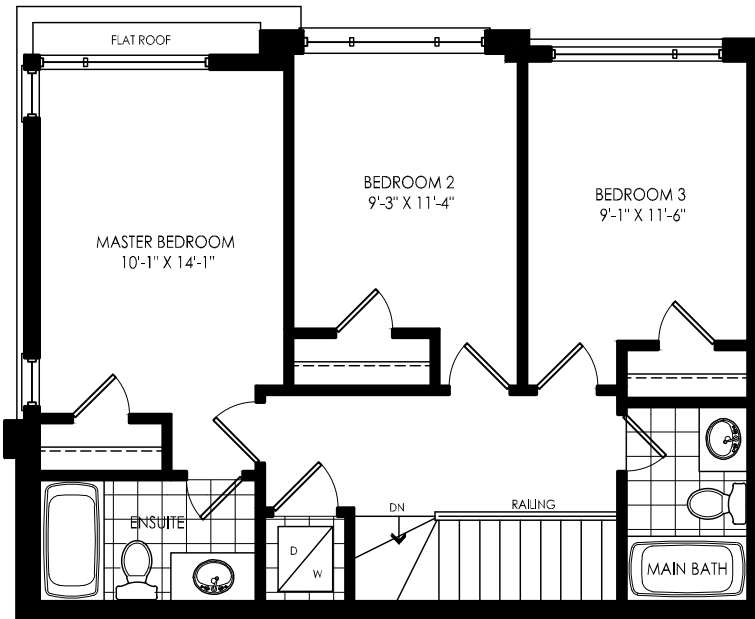
FRONT VIEW



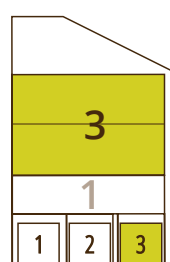
TYPE A / **ELEVATION "B2"**
Upgraded End Condition

TYPE A / **ELEVATION "B2"**
CORAL [TH-3] / 1434 Sq.Ft.

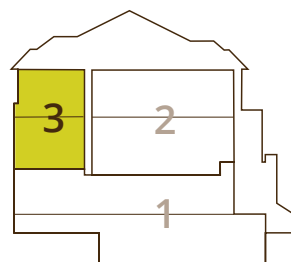
UPPER FLOOR / 3 bedroom / 2 bathroom



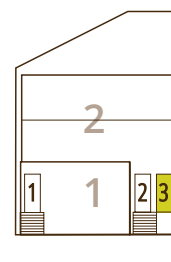
MAIN FLOOR / 1/2 bathroom



BACK VIEW

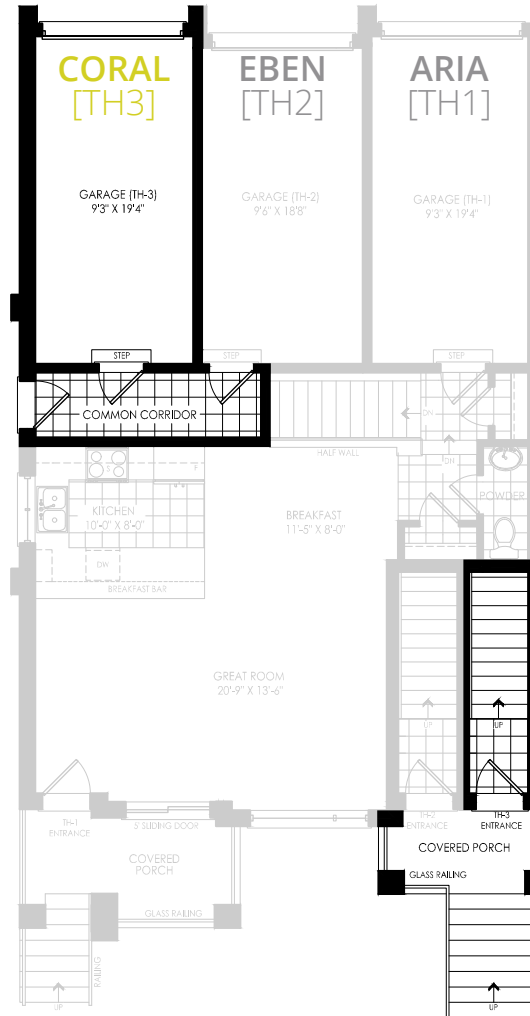


SIDE VIEW



FRONT VIEW

GARAGE LEVEL TH-3



FRONT
ELEV.



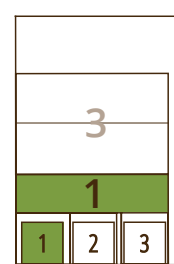
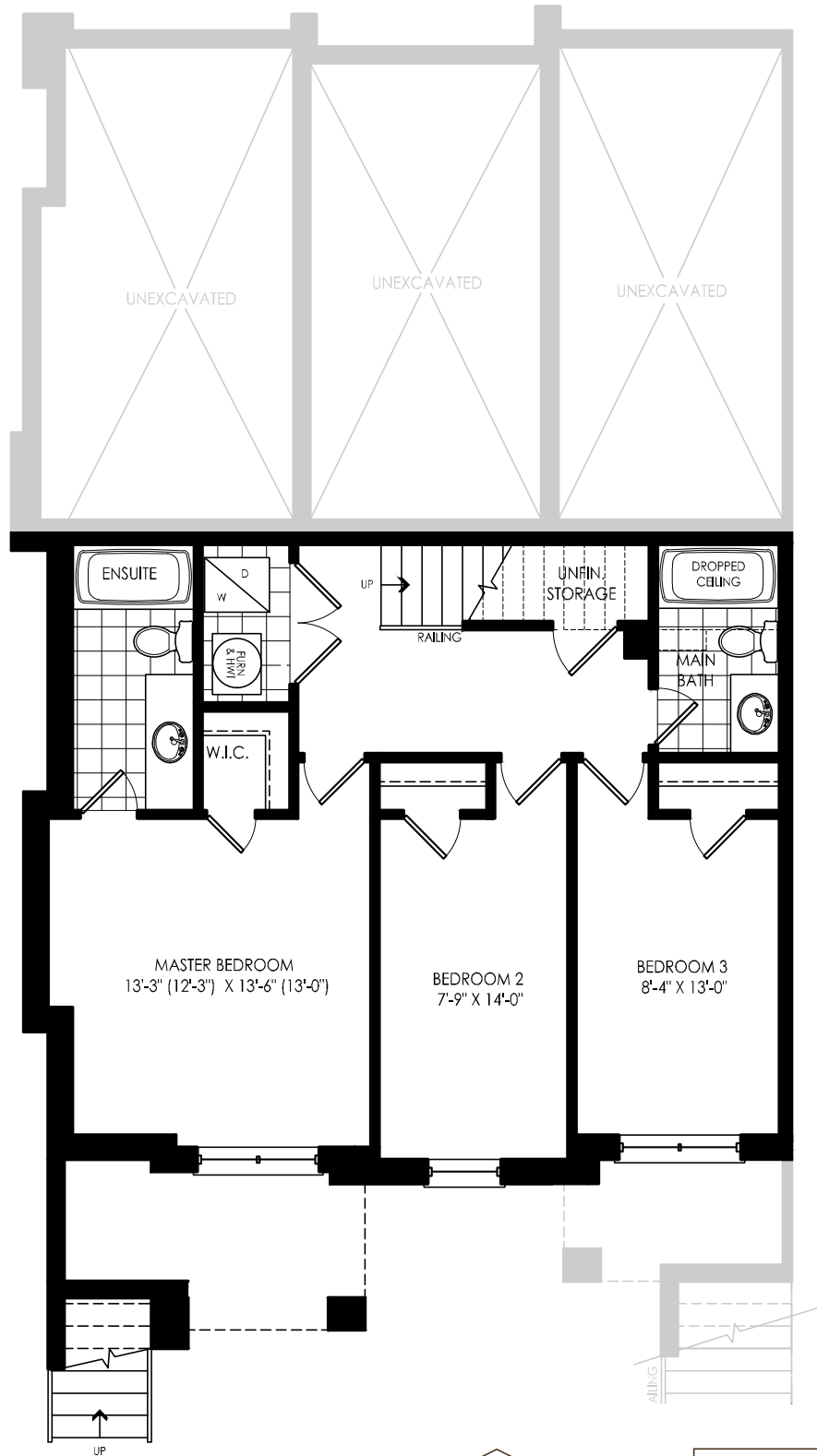
REAR
ELEV.

ARIA [TH-1]
EBEN [TH-2]
CORAL [TH-3]

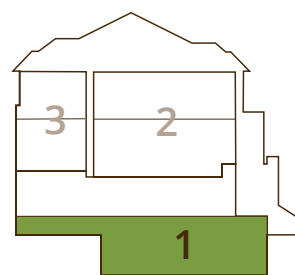


TYPE A / ELEVATION "B2 UPGRADE"
ARIA [TH-1] / 1405 Sq.Ft.

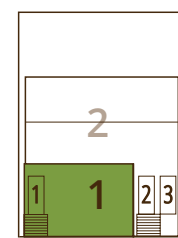
BASEMENT FLOOR / 3 bedroom / 2 bathroom



BACK VIEW



SIDE VIEW

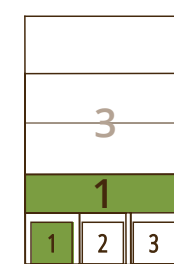
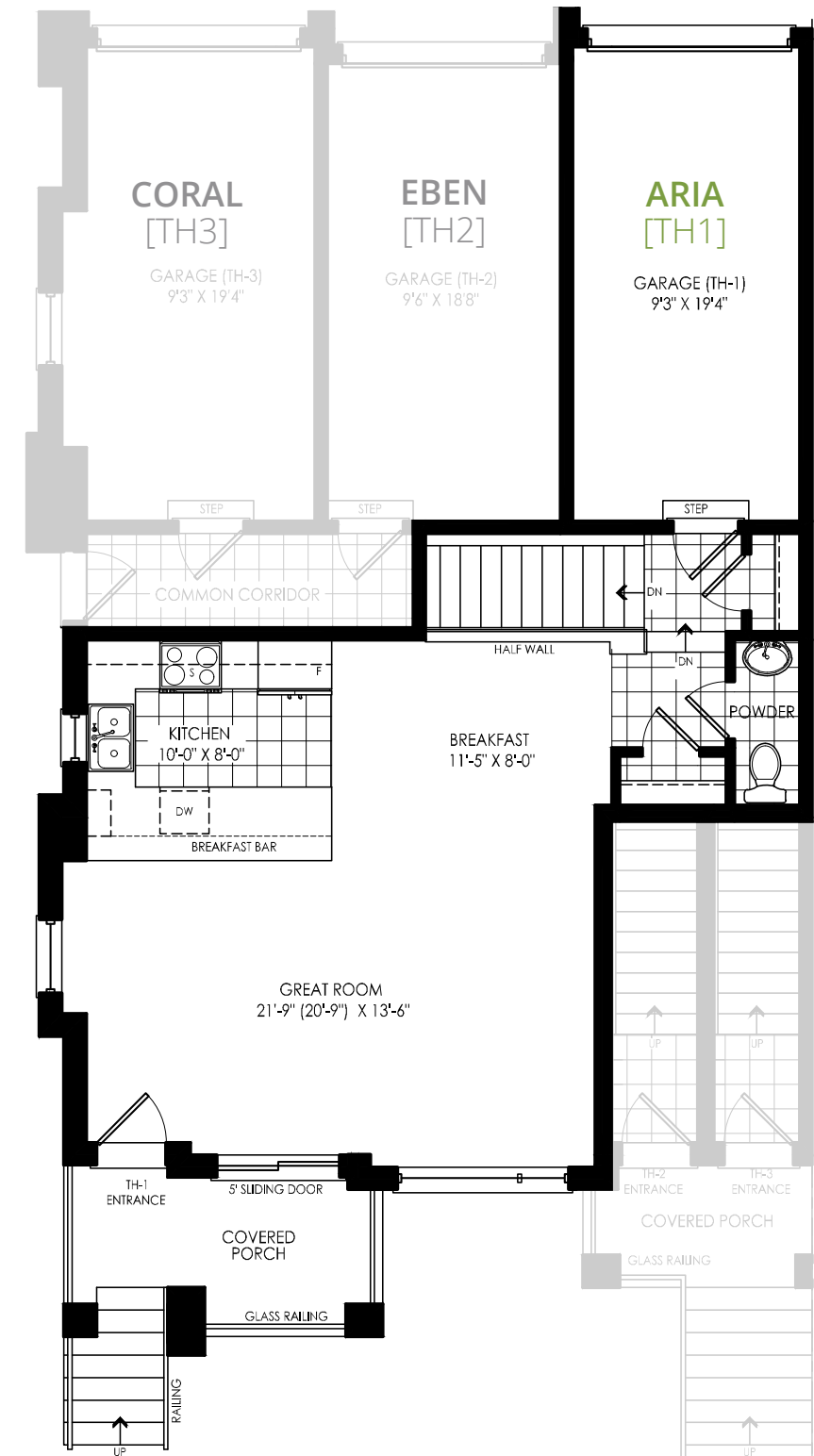


FRONT VIEW

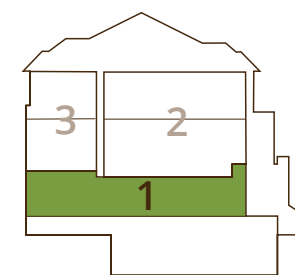


TYPE A / ELEVATION "B2 UPGRADE"
ARIA [TH-1] / 1405 Sq.Ft.

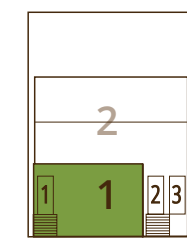
UPPER FLOOR / 1/2 bathroom



BACK VIEW



SIDE VIEW

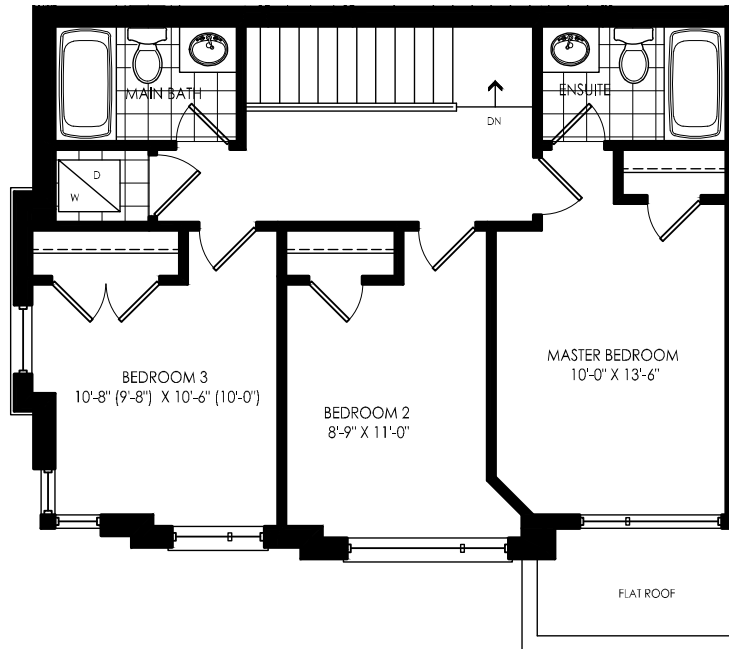


FRONT VIEW

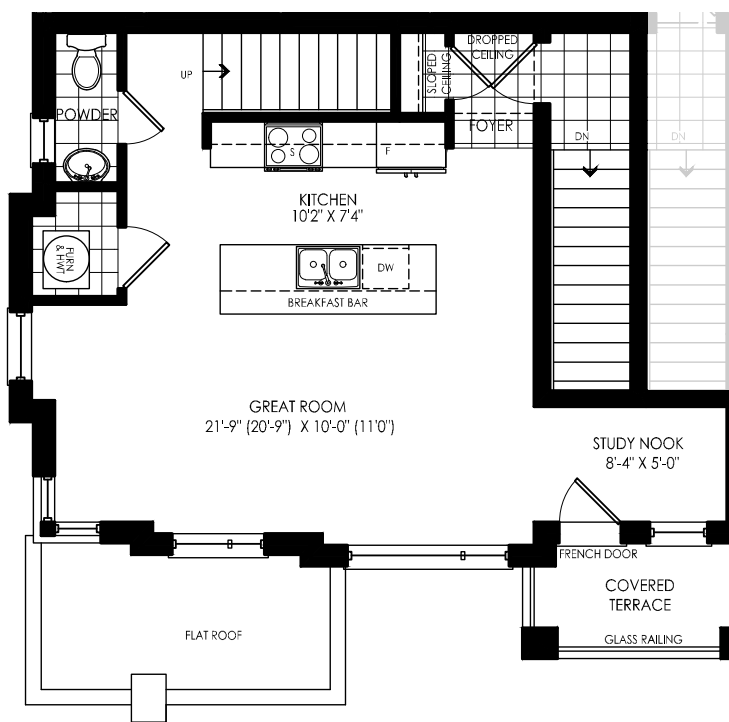
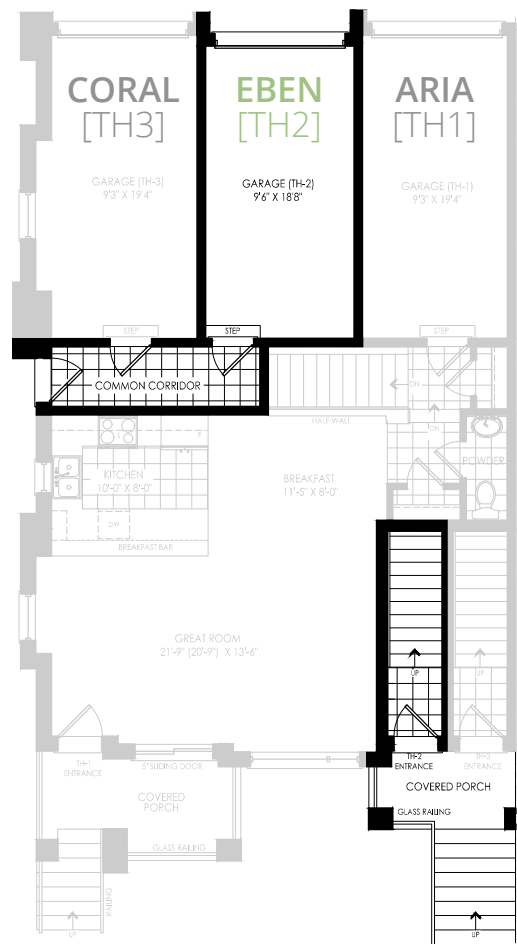


TYPE A / ELEVATION “B2 UPGRADE”
EBEN [TH-2] / 1351 Sq.Ft.

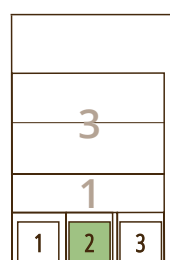
UPPER FLOOR / 3 bedroom / 2 bathroom



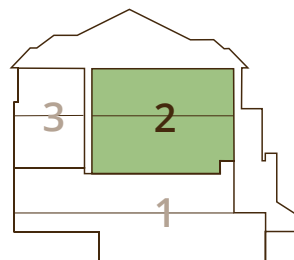
GARAGE LEVEL TH-2



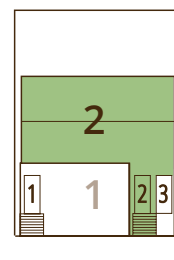
MAIN FLOOR / 1/2 bathroom



BACK VIEW



SIDE VIEW

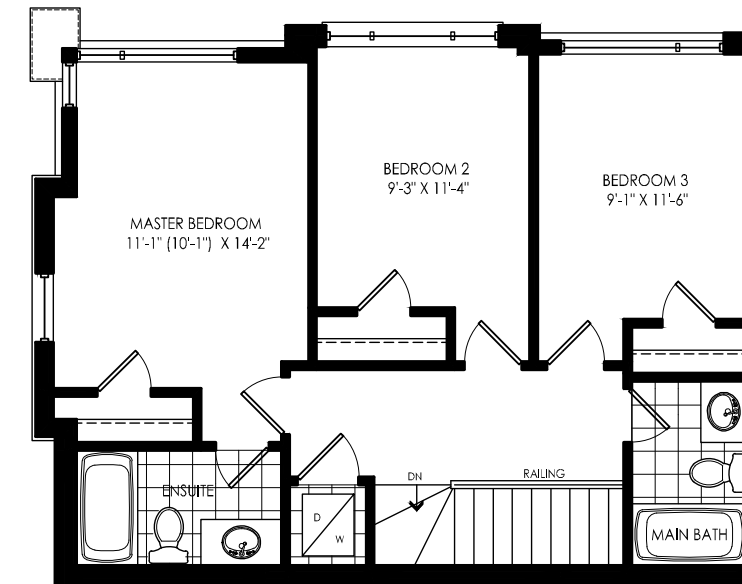


FRONT VIEW

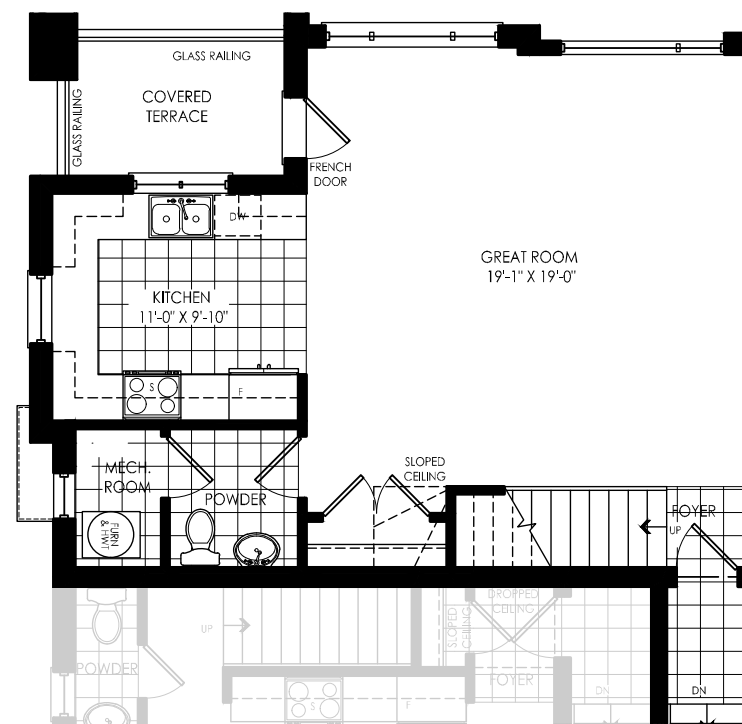
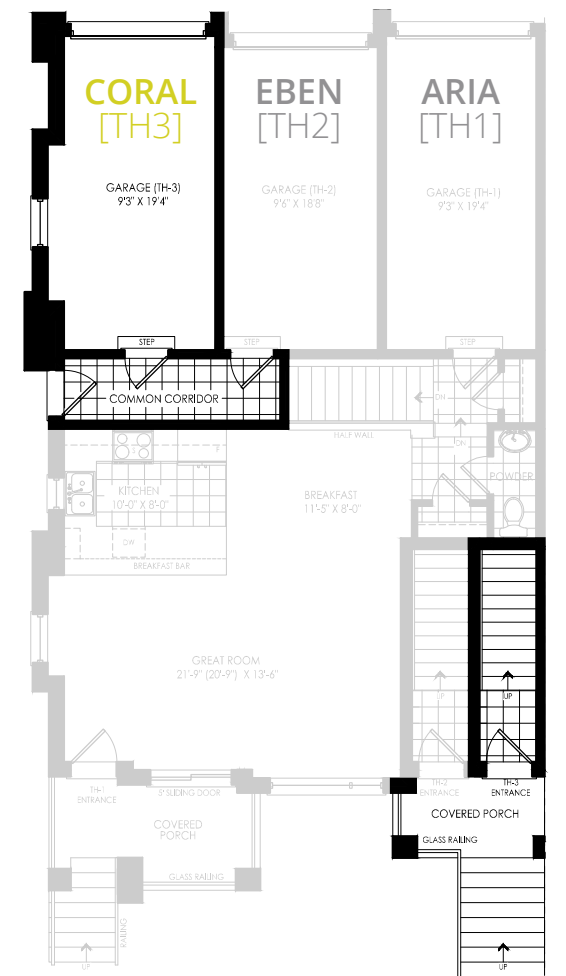


TYPE A / ELEVATION “B2 UPGRADE”
CORAL [TH-3] / 1460 Sq.Ft.

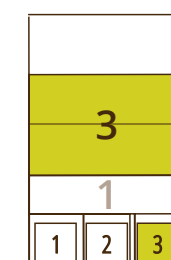
UPPER FLOOR / 3 bedroom / 2 bathroom



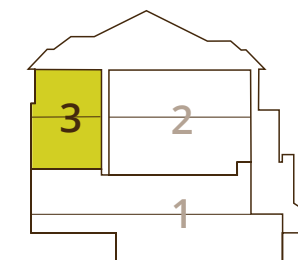
GARAGE LEVEL TH-3



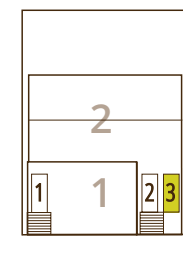
MAIN FLOOR / 1/2 bathroom



BACK VIEW



SIDE VIEW



FRONT VIEW

FEATURES & FINISHES

UrbanTowns

Exterior Features

- Architecturally selected brick, stone, and cladding
- Architecturally selected energy efficient windows complete with thermal glazing and removable screens
- Access to personal garage by common corridor
- Private balcony/terrace with glass railing

Interior Features

- All ceilings are white stippled (excluding bathrooms and kitchen)
- 8' ceilings throughout
- Stylish white interior doors with modern hardware
- Modern 3¼" baseboards with 2¼" casings
- Ceramic floor tile in foyer
- 35oz. broadloom or laminate throughout
- Vinyl-coated wire closet shelving
- Stacked washer and dryer in white
- Elegant natural finished oak handrail and pickets on all finished area stairs. Staircase to be carpeted and stringers to be painted white

Kitchens

- Custom-designed contemporary kitchen cabinets
- Granite countertop
- Aquabrax single lever pull-out faucet with stainless steel sink
- Ceramic floor tile in kitchen
- Modern style backsplash
- Stainless steel finish appliance package including range, fridge, dishwasher, and over the range microwave
- Exhaust fan vented to the outside

Bathrooms

- Contemporary designed cabinetry
- Top-mount sink with laminate counter top
- Pedestal and/or vanity sink in powder room
- Aquabrax single-lever faucet
- Aquabrax shower/tub fixtures
- Aquabrax bathroom tissue dispenser
- Acrylic deep soaker tub
- Pressure balanced valves for tub & shower
- Ceramic tile for floor and tub surround
- Privacy locks on all bathroom doors
- Exhaust fans vented to the outside

Electrical & Comfort

- Conveniently located phone outlets in kitchen, living room, and bedrooms
- Light fixtures in foyer, halls, kitchen, living/dining room, bedroom and walk-in closets
- White "Decora" style switches and receptacles throughout
- Exterior GFI outlet at balcony and front entrance
- Heat/smoke and carbon monoxide detectors
- Energy efficient high-velocity furnace
- Energy efficient air conditioner
- Energy efficient tankless hot water
- ERV (Energy Recovery Ventilator) circulates fresh air into the home

All of the above specifications are from Vendor's standard samples and as per plan. Variations from Vendor's samples may occur in finishing materials, kitchen and vanity cabinets, floor and wall finishes due to normal production. The Vendor reserves the right to substitute materials and/or suppliers of equal or greater quality at any time at their sole discretion. Engineered laminate flooring may react to normal fluctuating humidity levels producing gapping or cupping, both considered to be within acceptable industry standards. Ceilings and walls may be modified to accommodate mechanical systems which may include installation of dropped ceilings or bulkheads. Prices, specifications and terms are subject to change without notice. E.&O.E. 2020.

AWARDS WINNER



2020 BILD AWARDS

6 AWARDS AND 13 NOMINATIONS

2020 BILD, CHBA, OHBA, SCHBA & Nationals Awards

PACE Developments is honoured to be awarded and nominated by the most recognized building organizations in the region, country and continent. With a total of 6 awards and 13 nominations heading into 2020, we are extremely proud of our team and partners.

Awards for their Urban North Townhomes Project include:

- Best Presentation Centre
- Best Special Promotion
- Best Digital Marketing Campaign



T: 705.252.1206 | F: 705.252.1307 | sales@myurbannorth.ca
700 Mapleview Dr. E | Barrie, ON | L4N 0W5
pacedevelopments.com