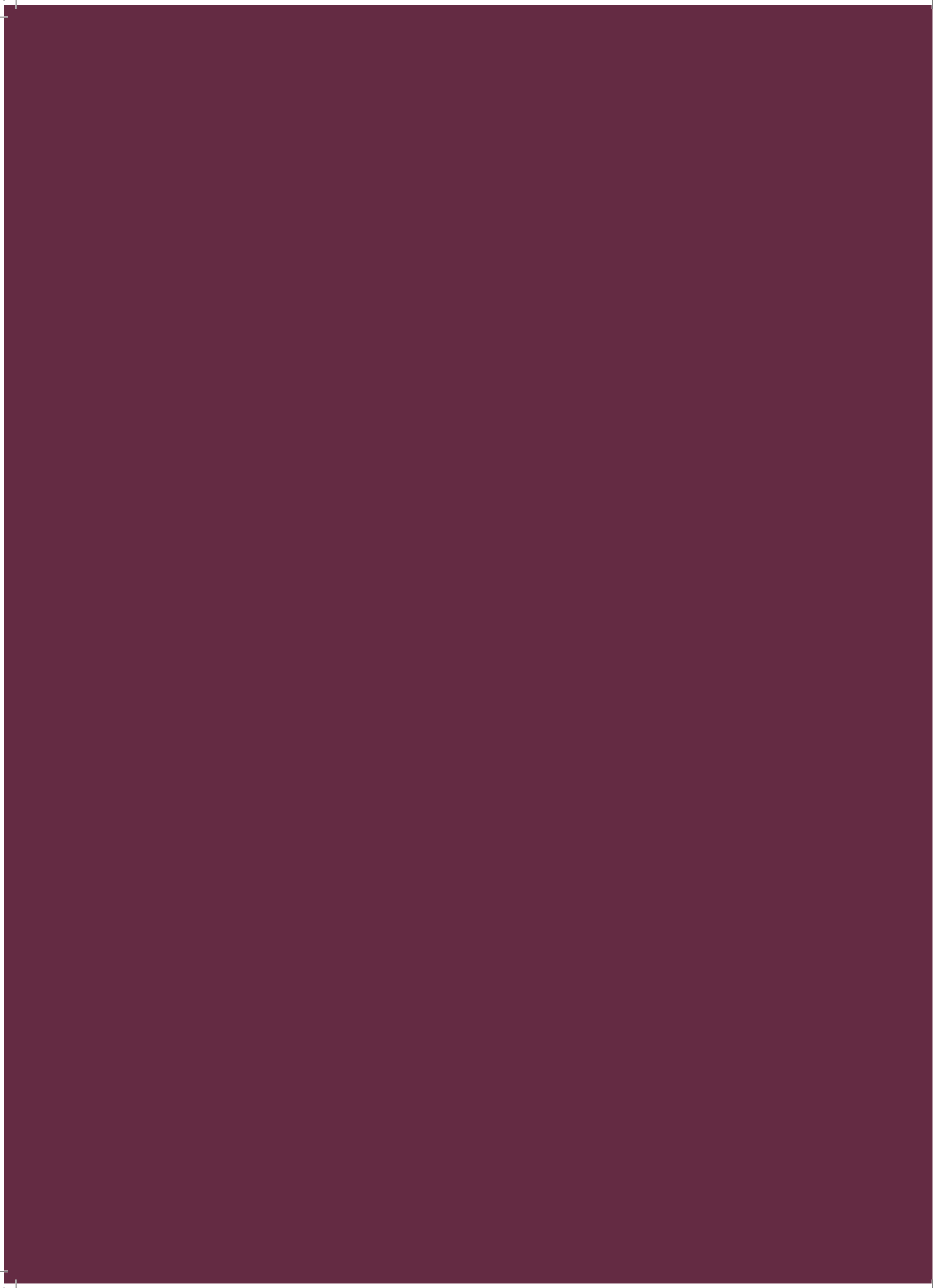




# MODERNTOWNS

AT KINGSVIEW RIDGE

---





MODERN TOWNS AT  
KINGSVIEW RIDGE



# MODERN DESIGN

Kingsview Ridge is offering a new collection of contemporary towns fit for modern-day royalty. Cutting-edge, stunning, elegant—the list goes on. Each townhome is created in the urban style that Treasure Hill has perfected and will be built to the highest standard of excellence. These are the Modern Towns at Kingsview Ridge.



MODERN TOWNS







## CHIC LIVING

Beautiful design intersects with great location. At Kingsview Ridge, you are perfectly situated at the Oshawa-Courtice border with access to all the amenities available to those living in an established community. Live the life you have always wanted in a hand-picked location that offers everything you need and more.

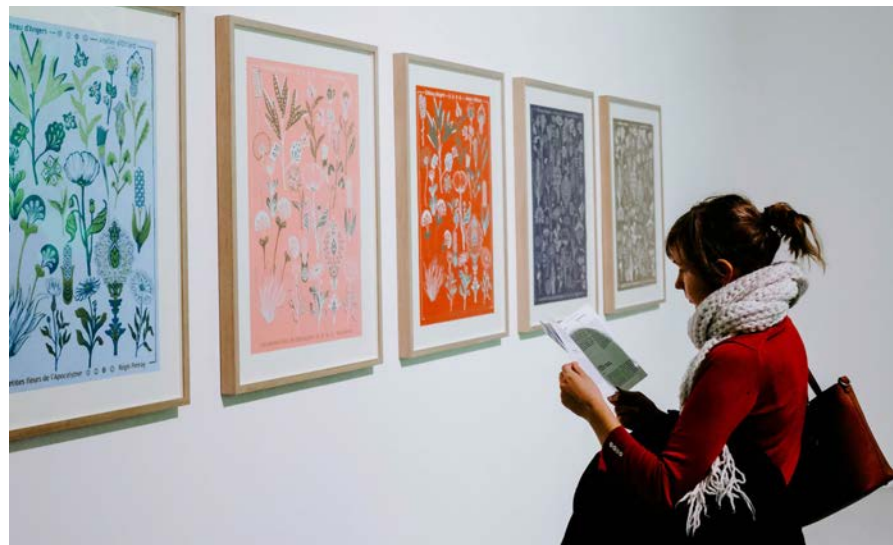
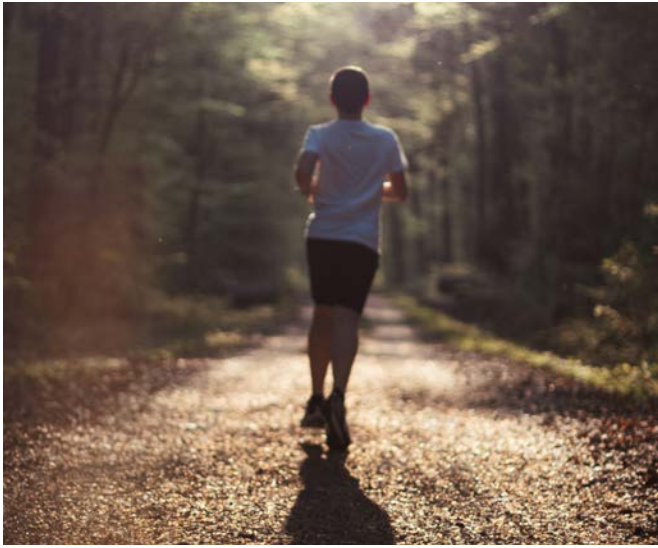


## SURROUNDED BY GROWTH AND OPPORTUNITY

It is vital to reside in a community where life is elevated, and here that is exactly what you can expect. Located at Shankel Road and Townline Road, Modern Towns at Kingsview Ridge offer a convenient lifestyle that is set to become even brighter with tremendous growth and greater prosperity on the horizon for the area.



MODERN TOWNS

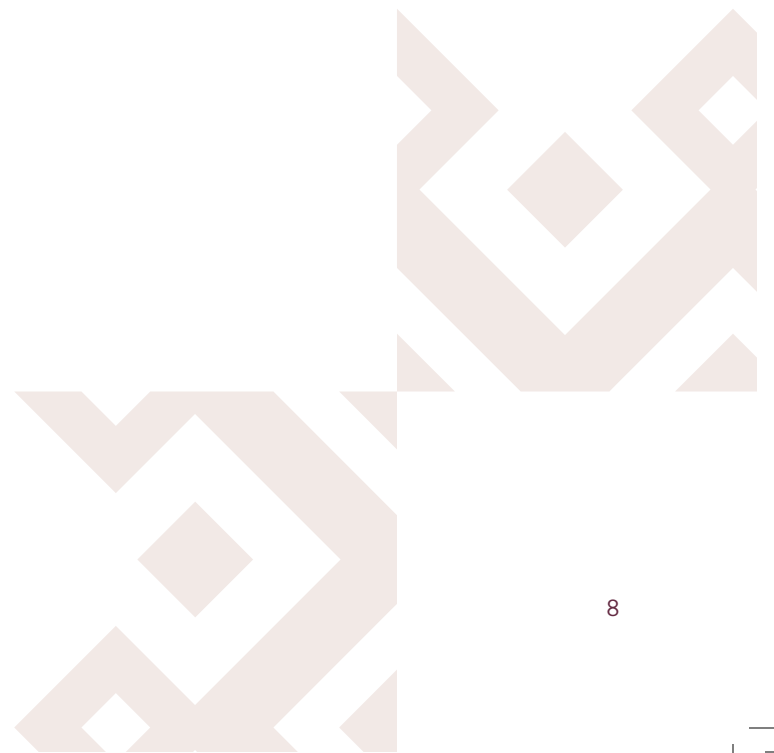






## EXPERIENCE OSHAWA & COURTICE

Everything you need is at your fingertips when you live in a modern town at Kingsview Ridge. A plethora of shops, schools, parks, and restaurants are just moments away, as well as Highway 401 and the new 407 extension. The community is packed with amenities including nature trails at Harmony Valley Conservation Area, recreation centres for all age groups, entertainment destinations to spend time with family and friends, and so much more.





MODERN TOWNS

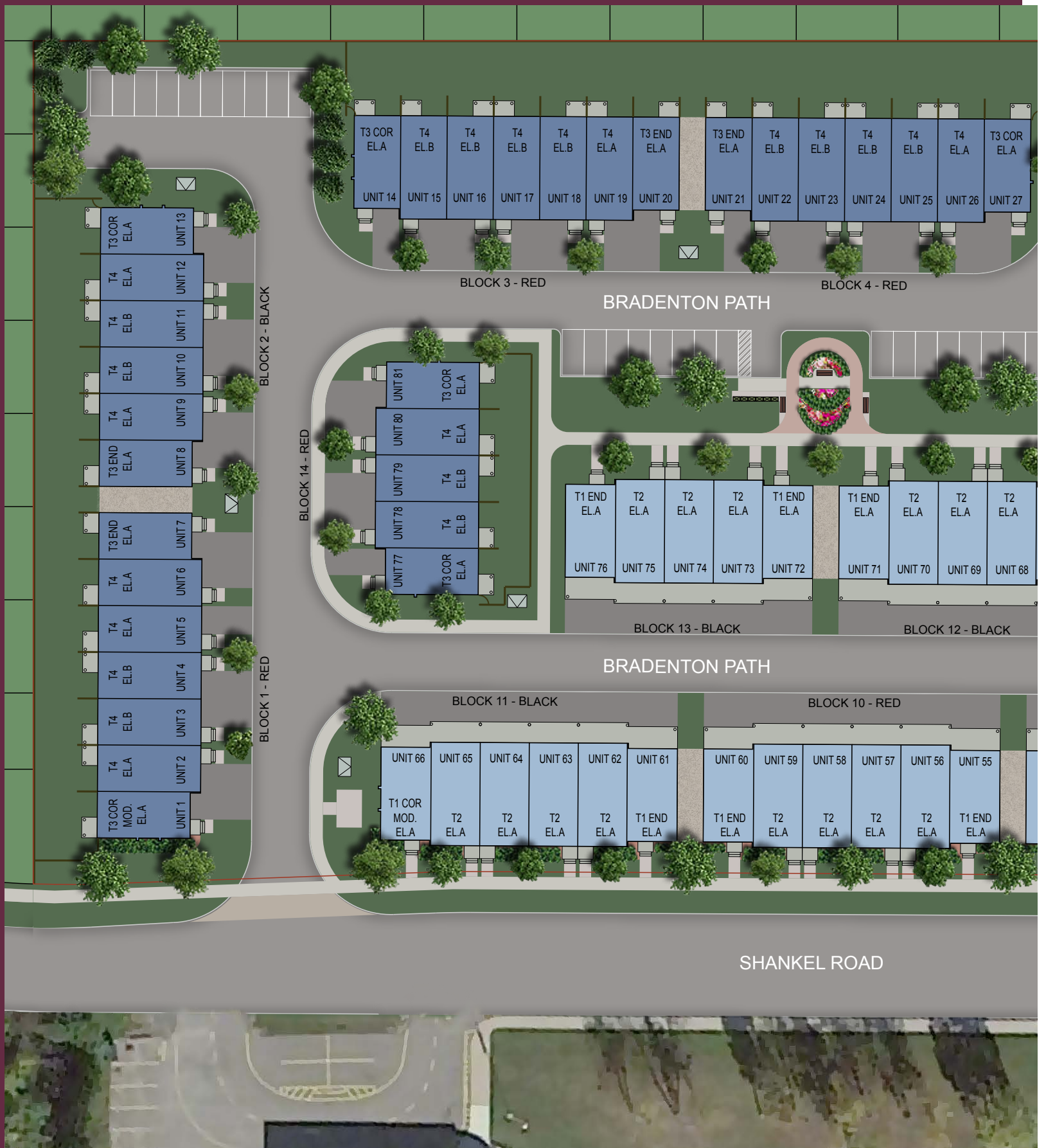




A person wearing a light blue shirt is seen from the side, looking towards a large animal skull with long, curved horns. The skull is positioned in the foreground, and the background is a bright, hazy sky. The overall scene suggests a natural or outdoor setting.

## AN IDYLLIC LIFESTYLE

When you live in Oshawa/Courtice, you can rest easy knowing that you have a daily routine perfectly tailored to your lifestyle. Whether you are looking for a relaxing night out at a quaint restaurant, a fun-filled day spent shopping and exploring, or an active régime utilizing the many greenspaces nearby, everything you've been searching for is within reach.



# MASTER-PLANNED COMMUNITY





Map and site plan not to scale, artist's concept only. Site plan provided for general information only. All details should be confirmed with sales representative and/or municipality. Sidewalk location (if any) may vary. Dimensions shown are in metres and can be converted to feet by dividing by 0.3048. E. & O. E.



SINGLE CAR GARAGE  
18'0" TOWNS



DOUBLE CAR GARAGE  
19'8" TOWNS



FUTURE  
RESIDENTIAL



MODERN TOWNS



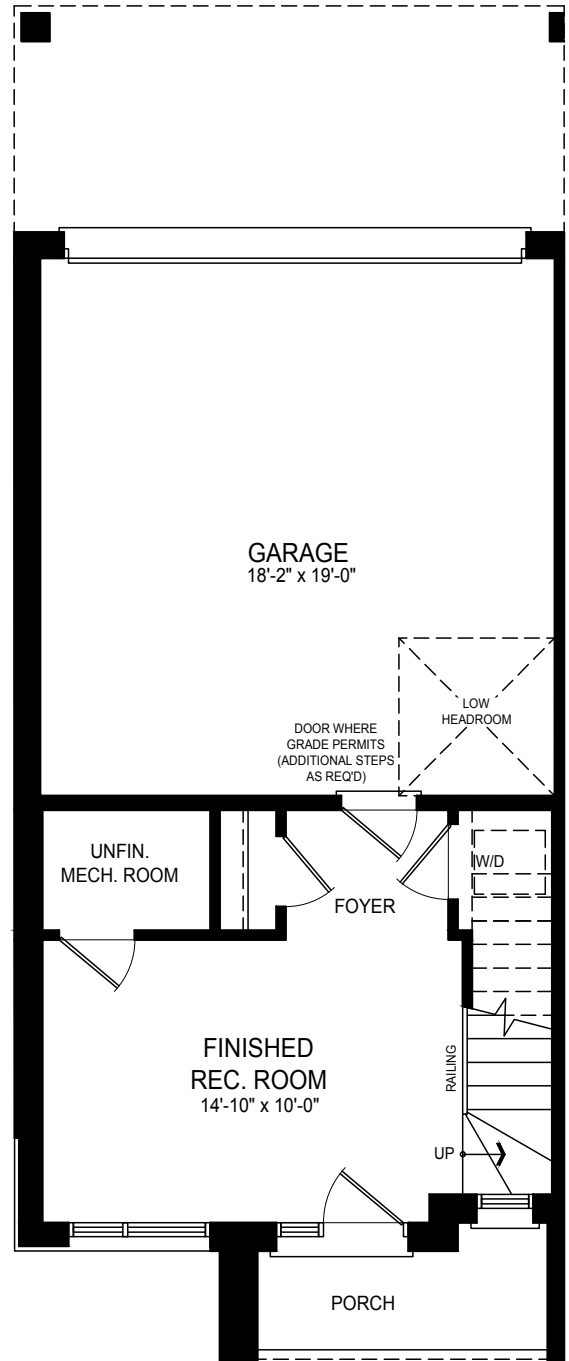




T1  
END

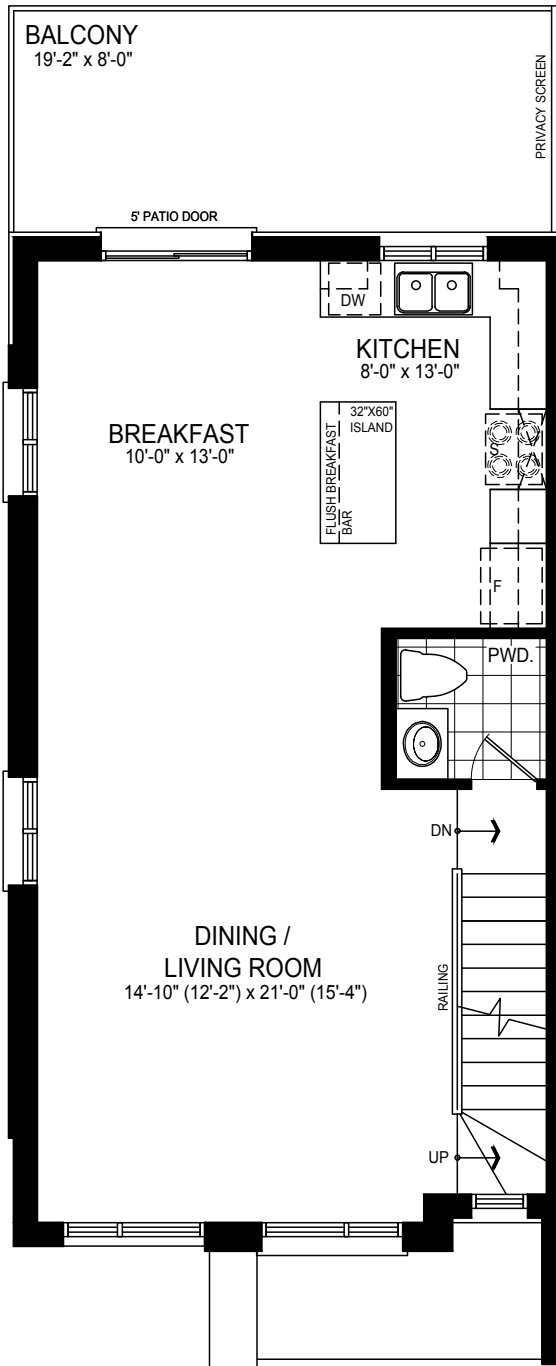
ELEV. A

1604  
SQ. FT.

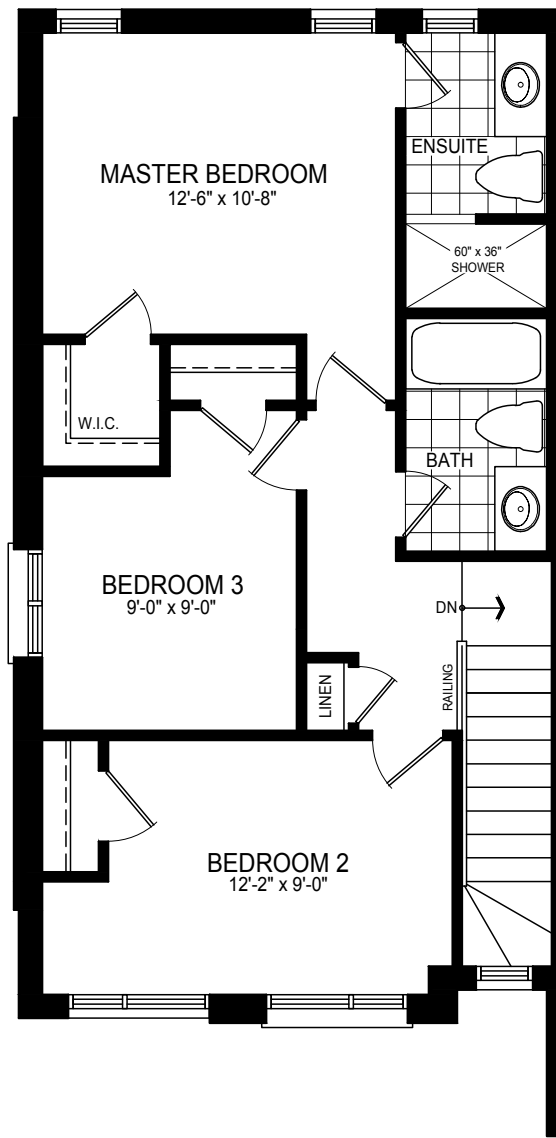


GROUND FLOOR





MAIN FLOOR



SECOND FLOOR

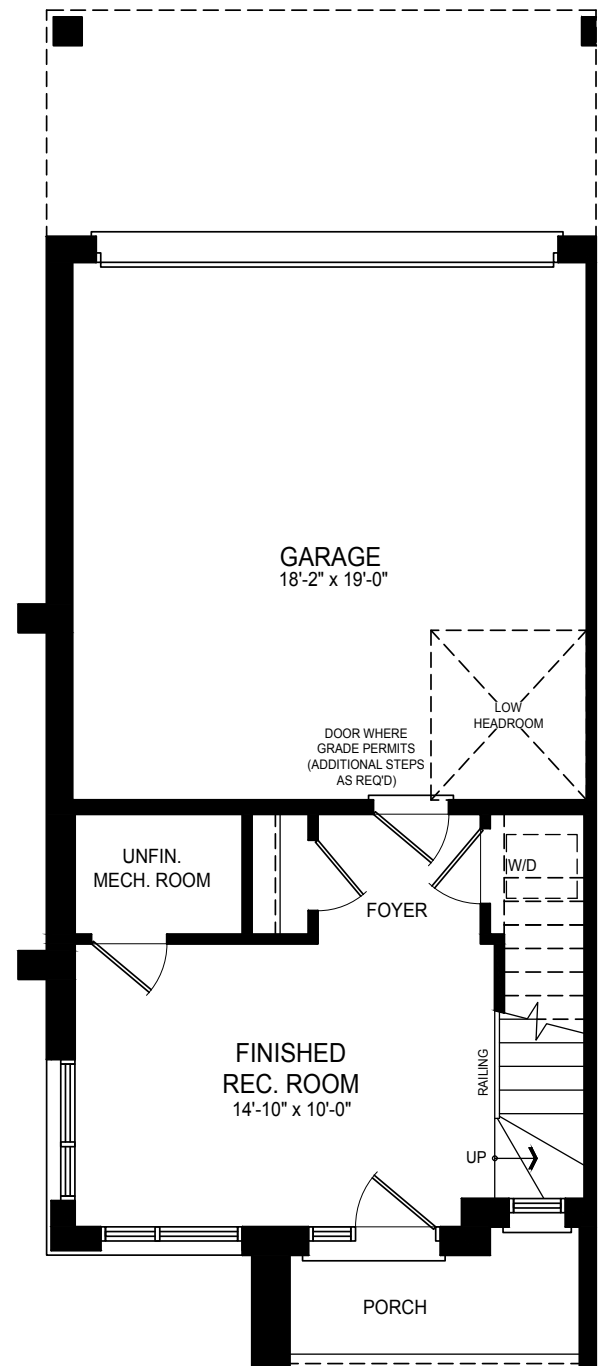
MODERN TOWNS



# T1 CORNER

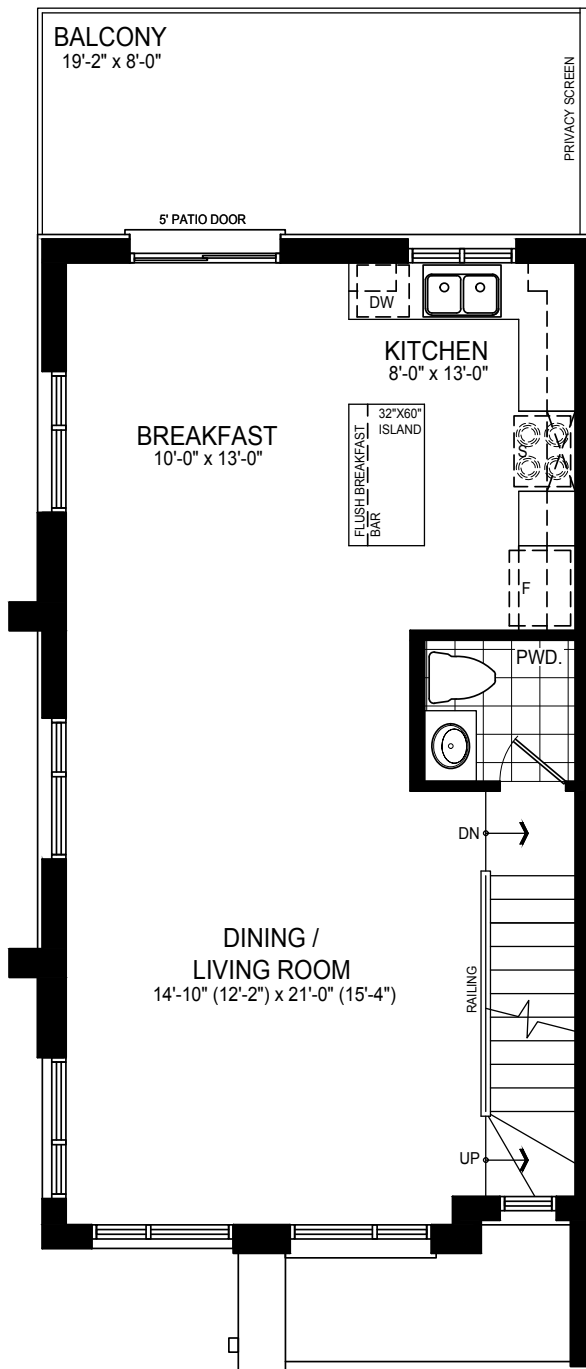
ELEV. A

1600  
SQ. FT.

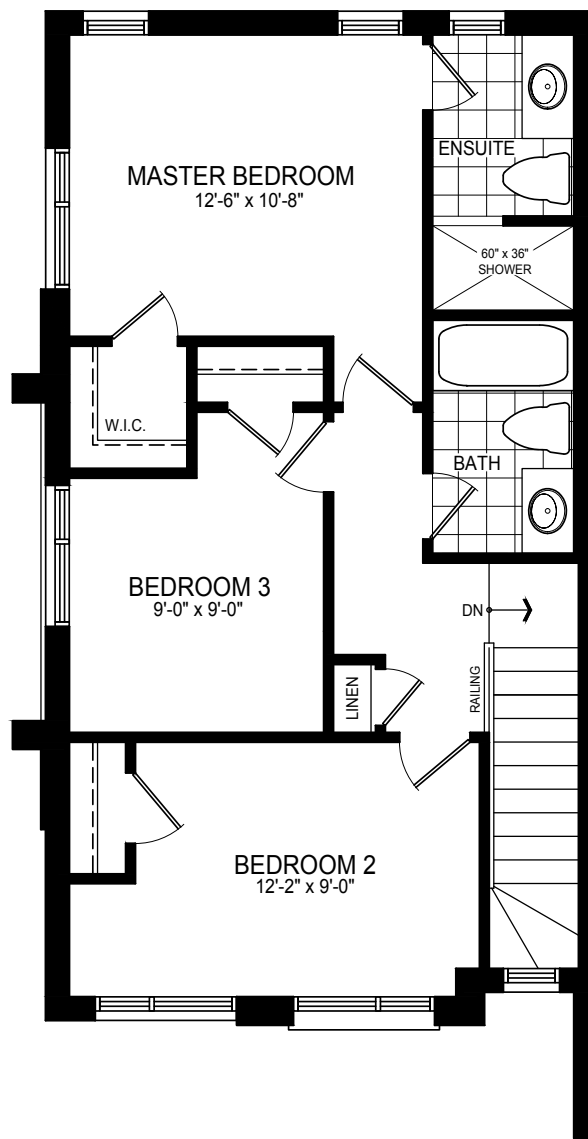


GROUND FLOOR





MAIN FLOOR



SECOND FLOOR

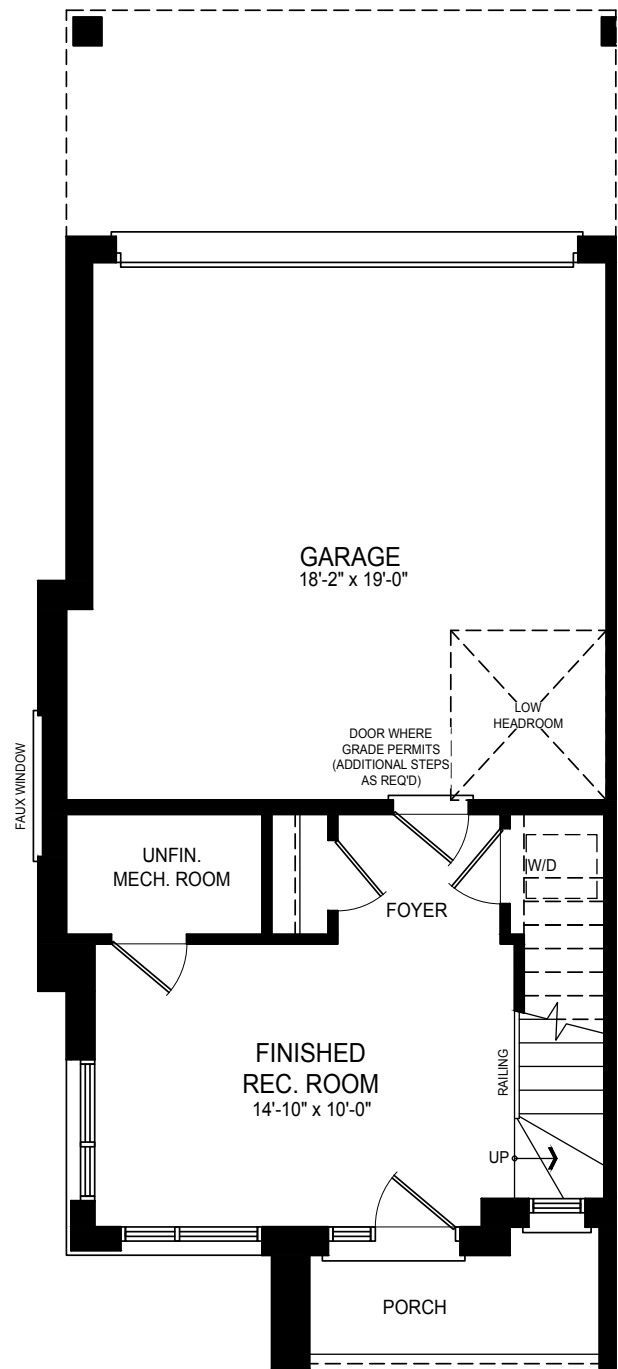
MODERN TOWNS



# T1 CORNER MODIFIED

ELEV. A

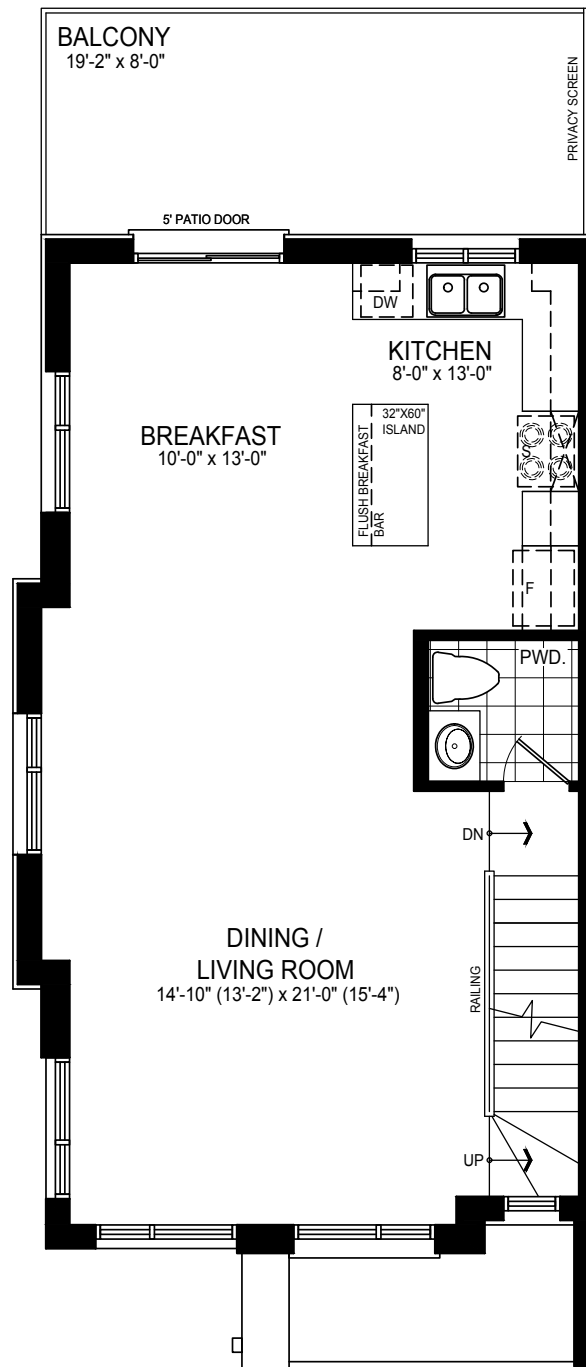
1632  
SQ. FT.



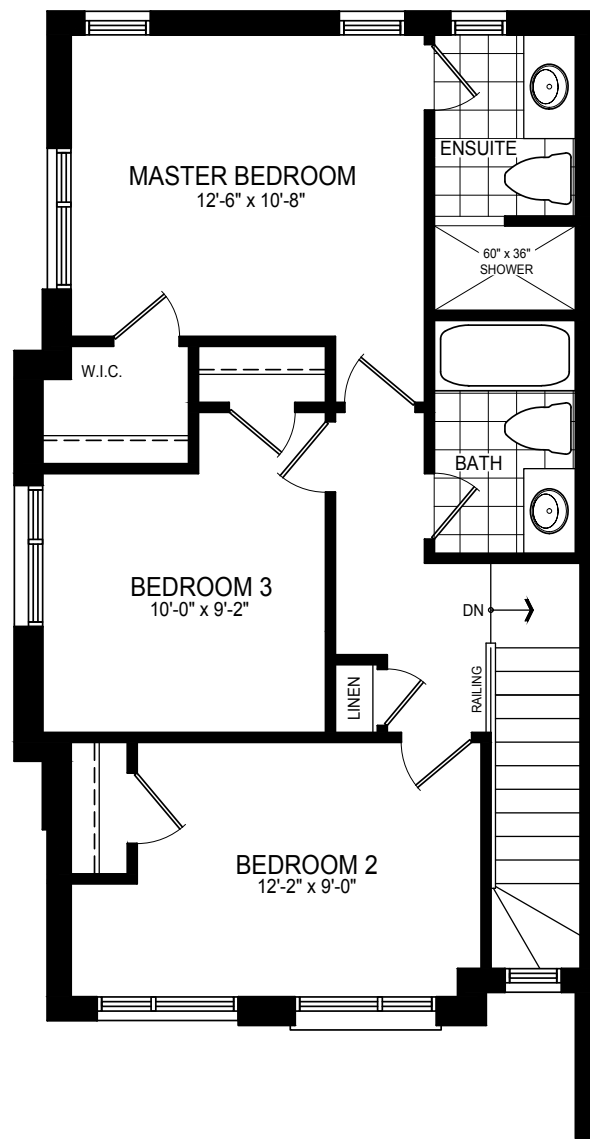
GROUND FLOOR







MAIN FLOOR



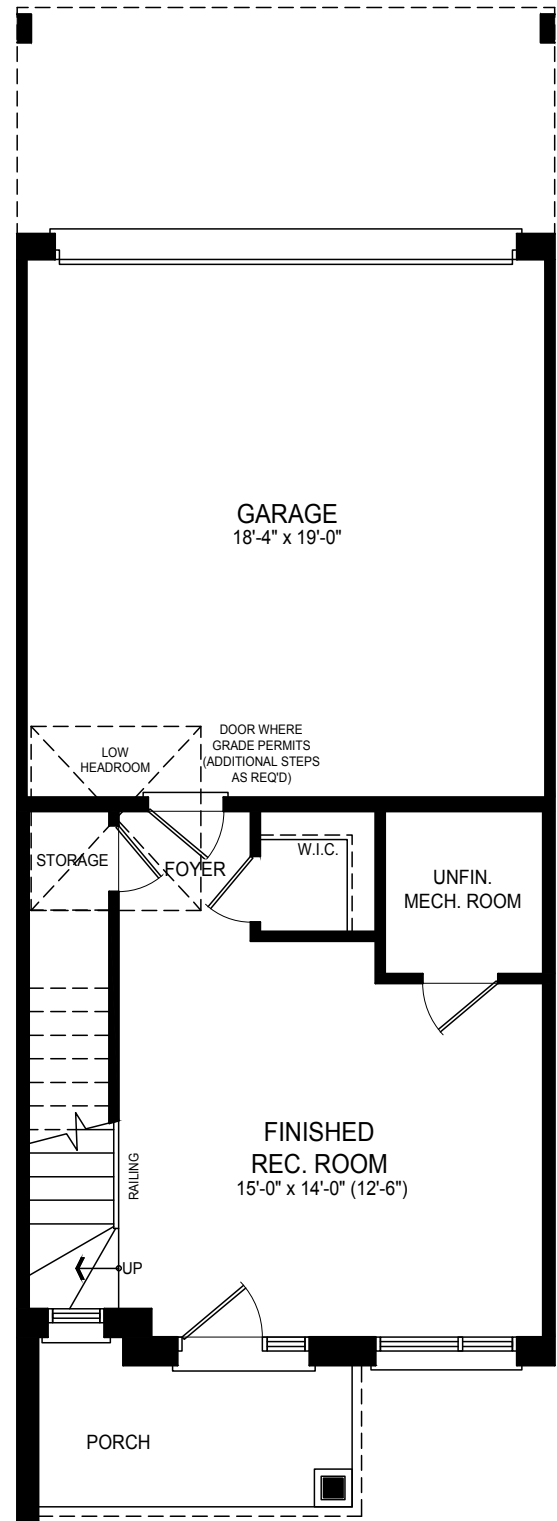
SECOND FLOOR



T2

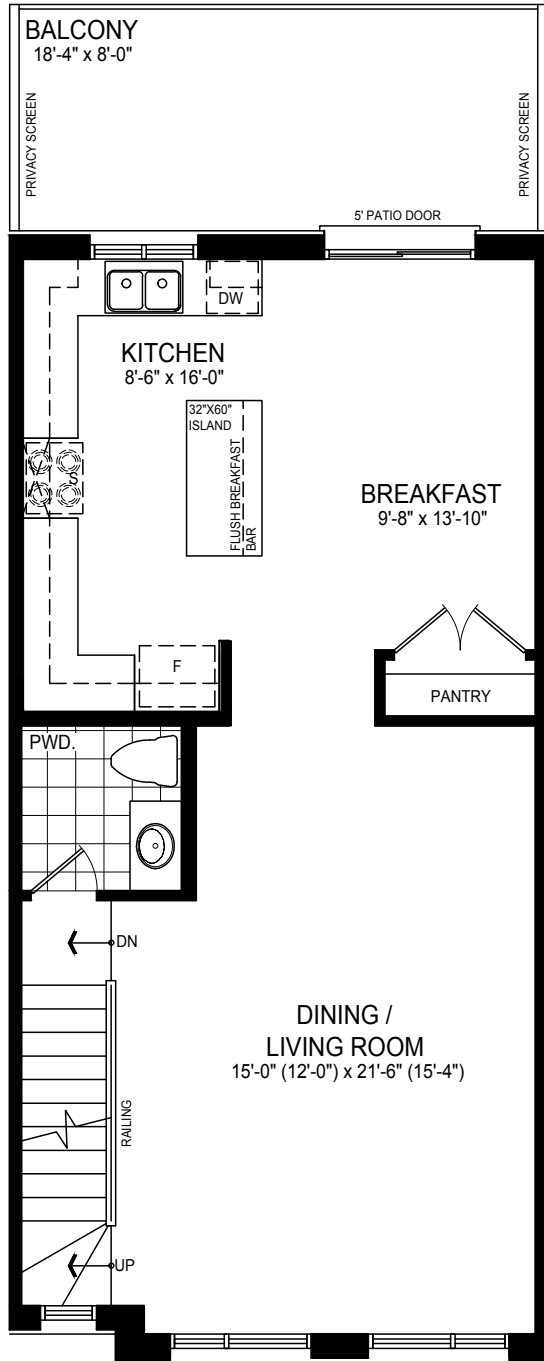
ELEV. A

1781  
SQ. FT.

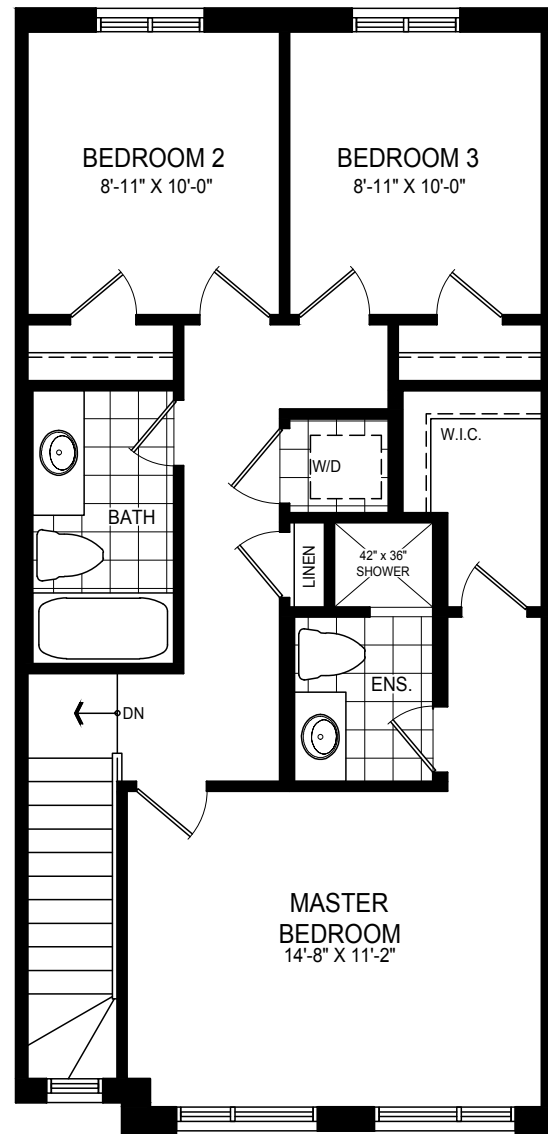


GROUND FLOOR





MAIN FLOOR



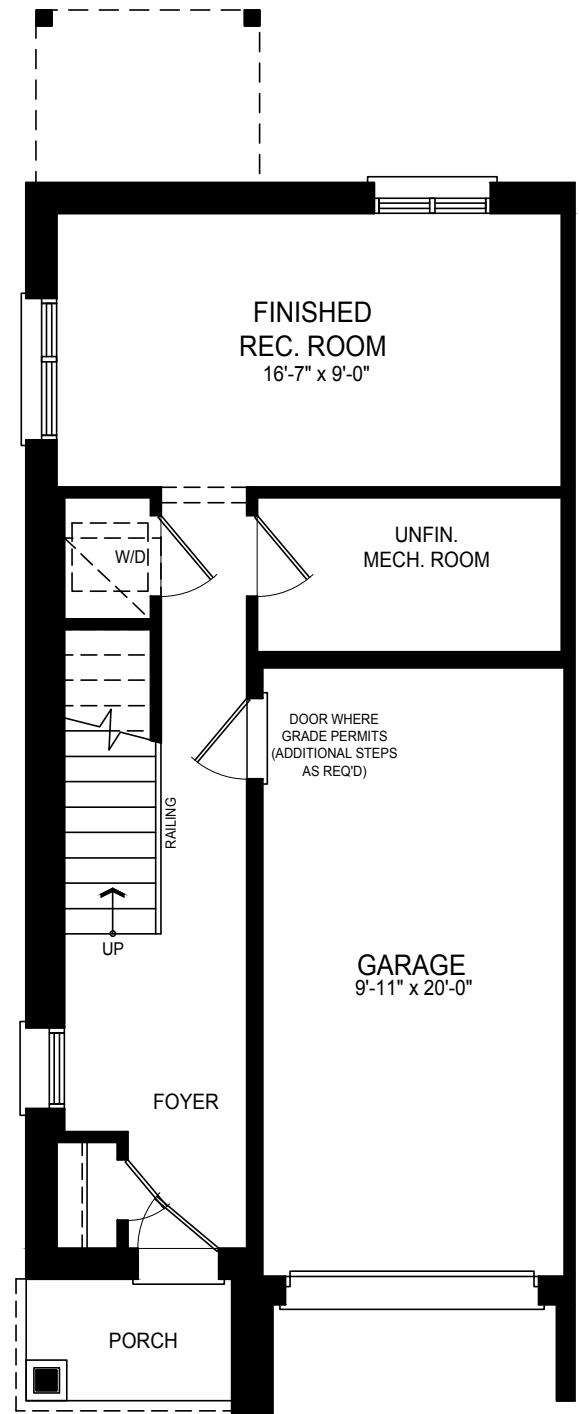
SECOND FLOOR



T3  
END

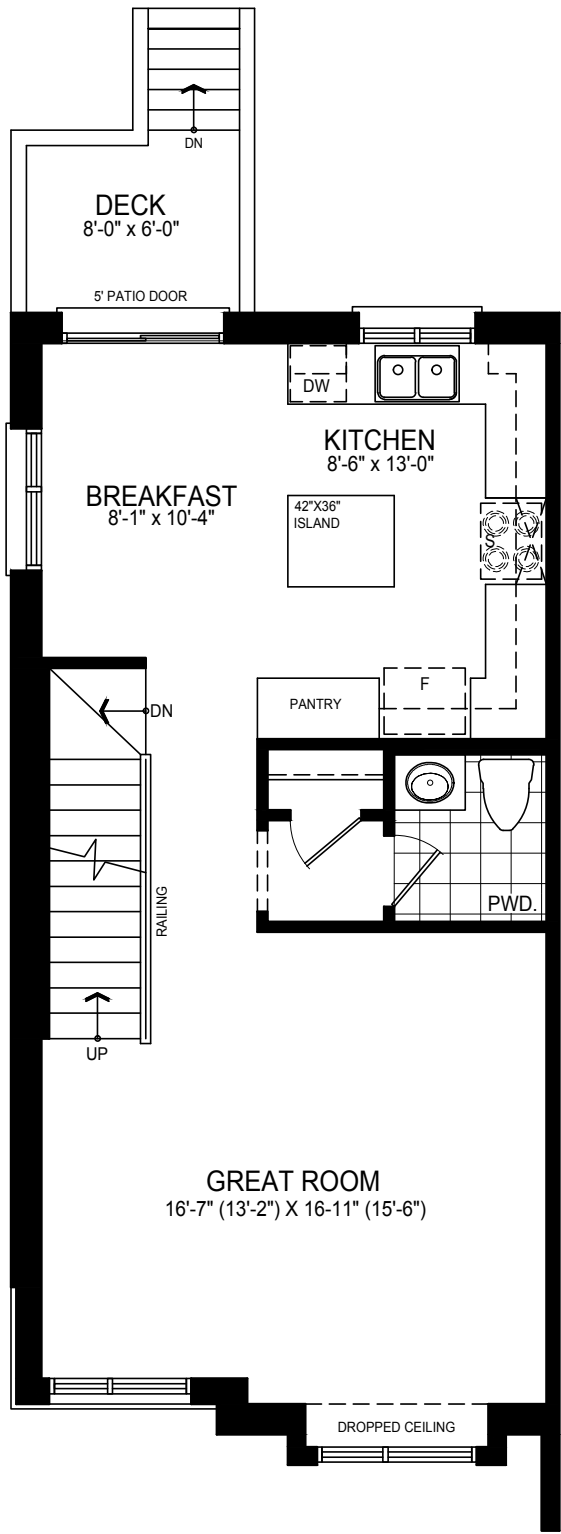
ELEV. A

1642  
SQ. FT.

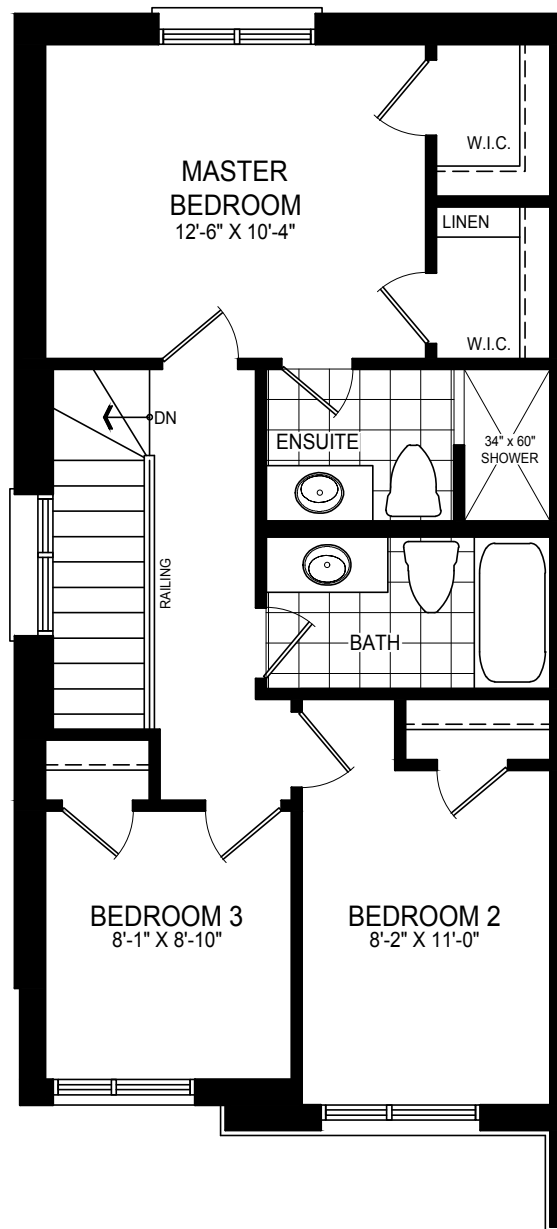


GROUND FLOOR





MAIN FLOOR



SECOND FLOOR

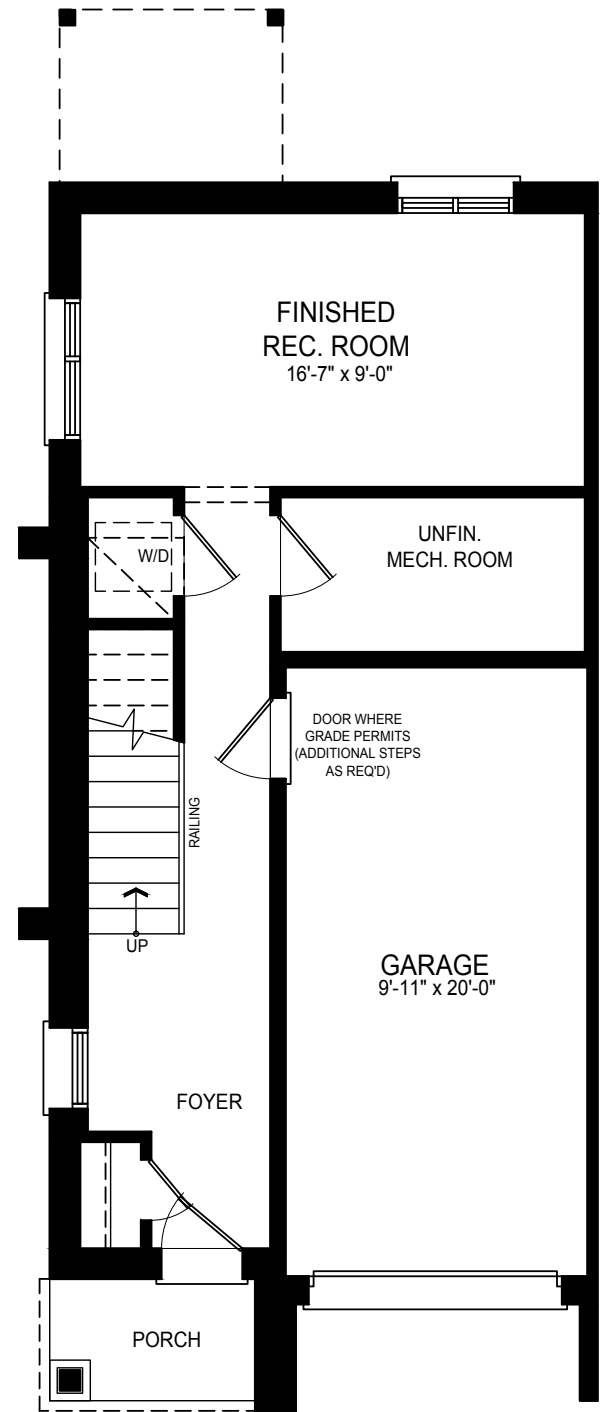
MODERN TOWNS



# T3 CORNER

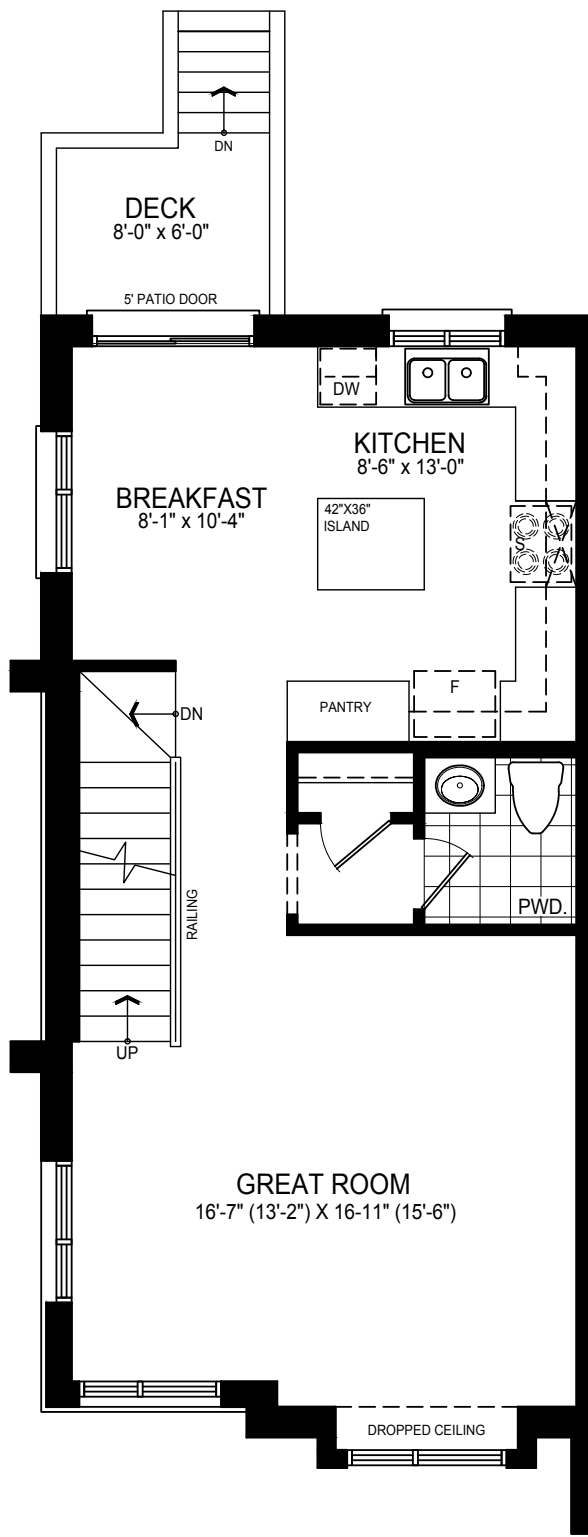
ELEV. A

1636  
SQ. FT.

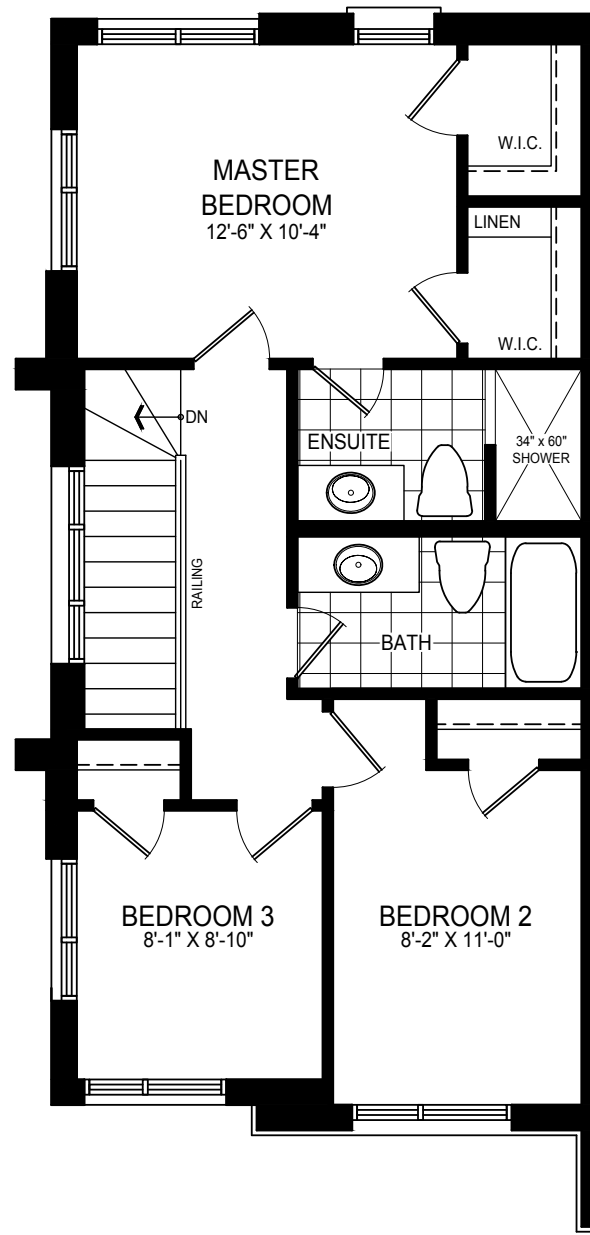


GROUND FLOOR





MAIN FLOOR



SECOND FLOOR

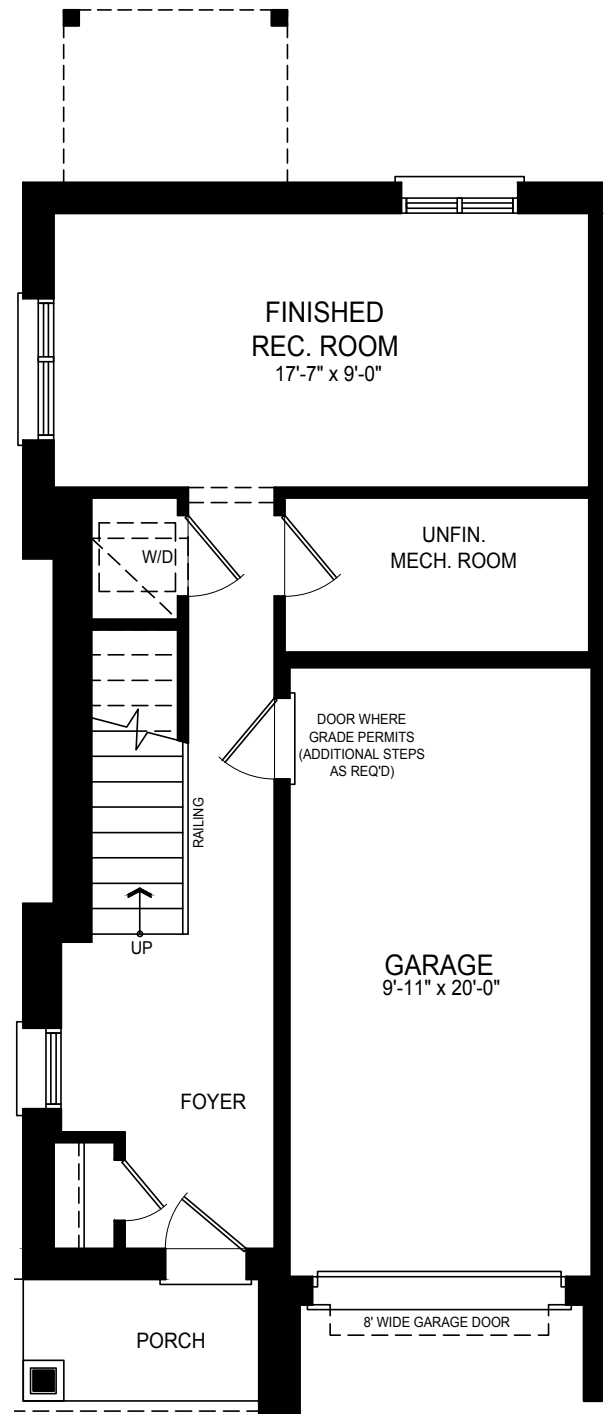
MODERN TOWNS



# T3 CORNER MODIFIED

ELEV. A

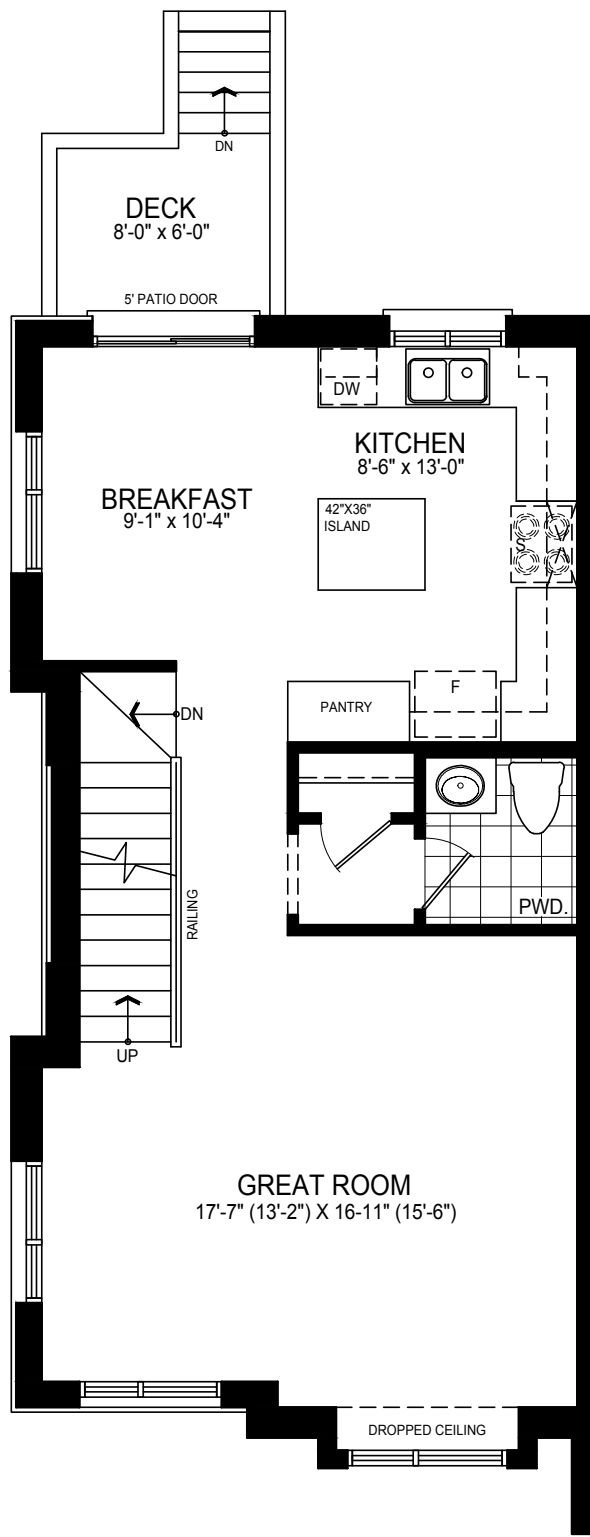
1708  
SQ. FT.



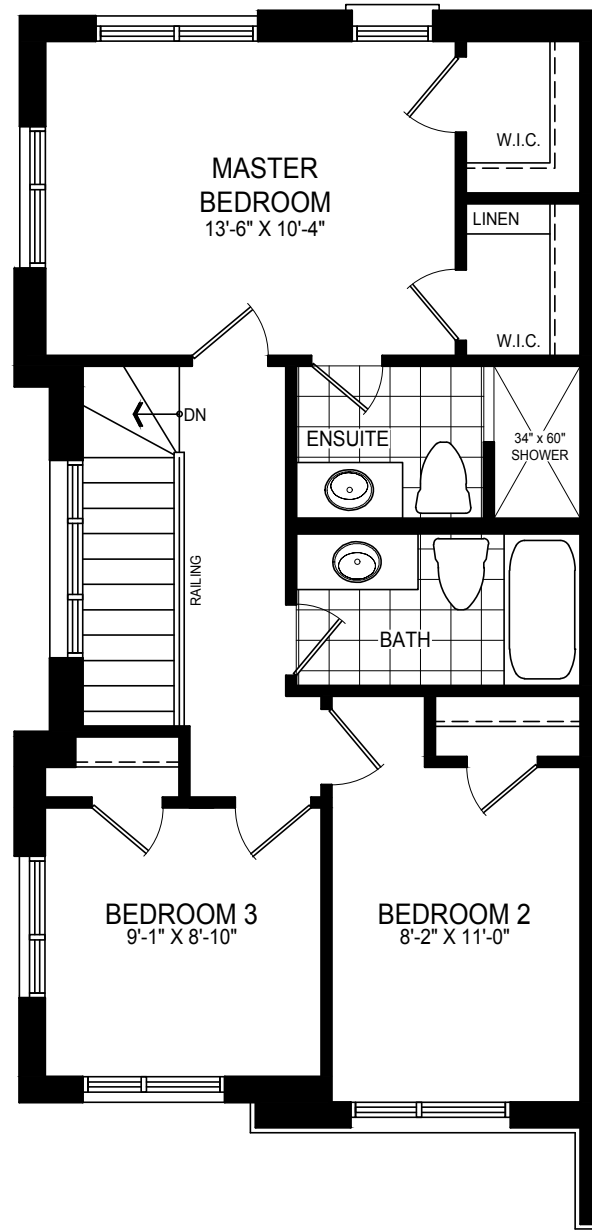
GROUND FLOOR







MAIN FLOOR



SECOND FLOOR

MODERN TOWNS

T4

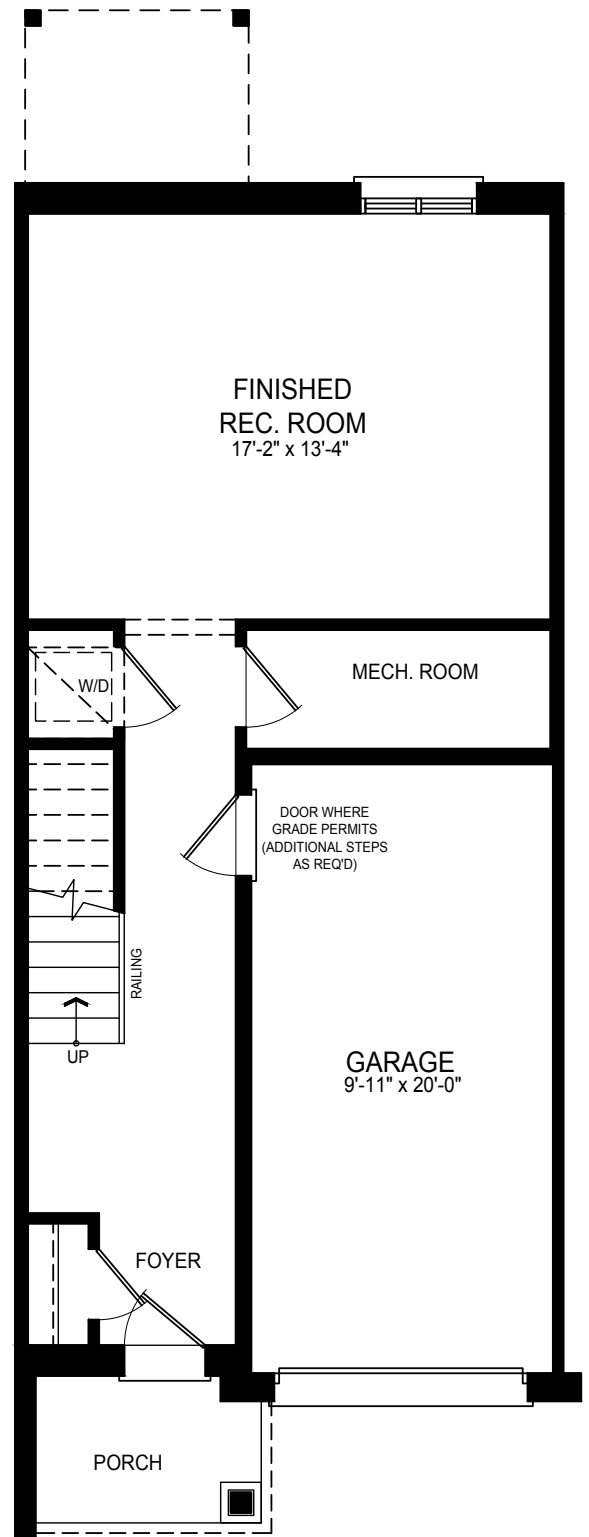
1841  
SQ. FT.



ELEV. A

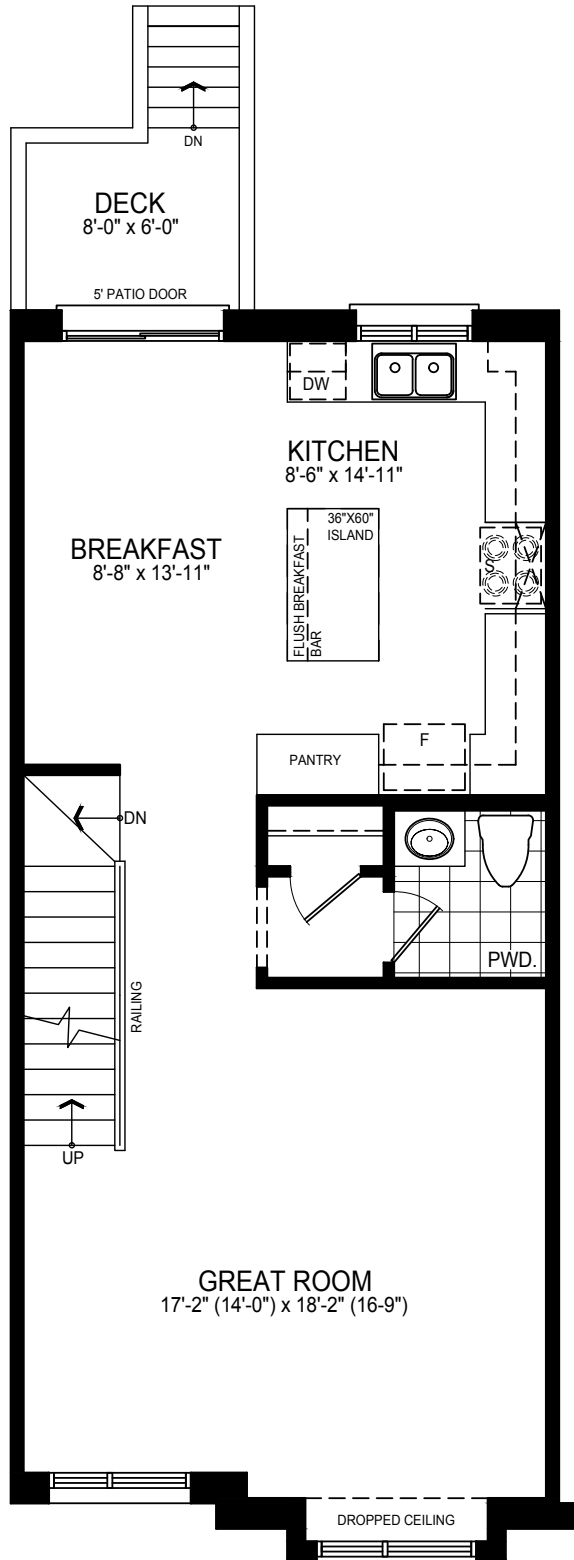


ELEV. B

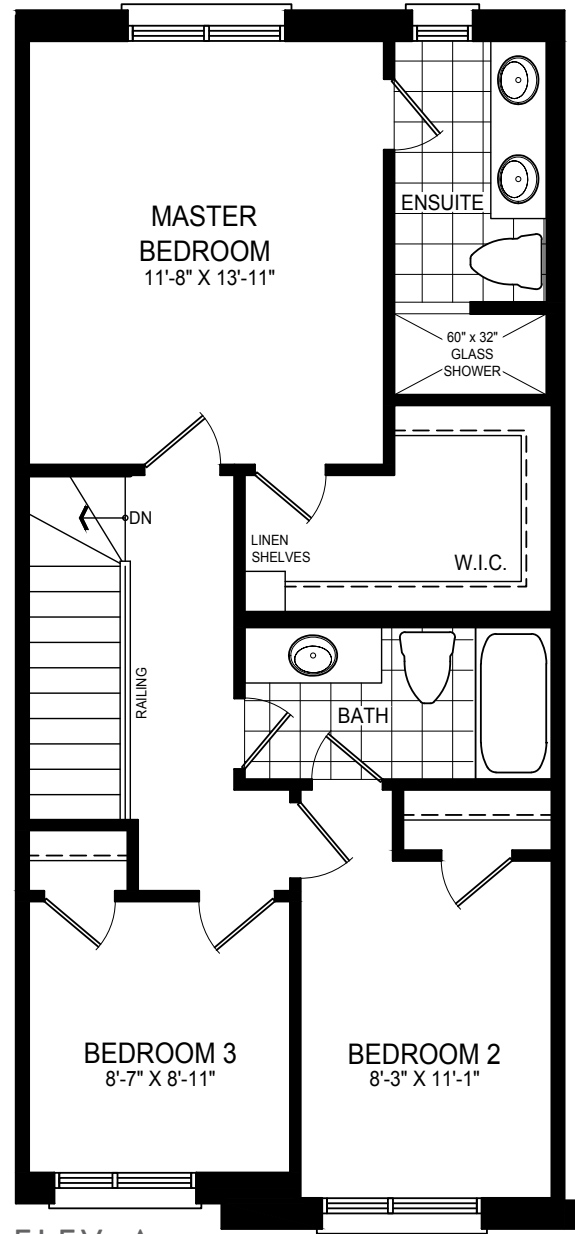


GROUND FLOOR • ELEV. A & B

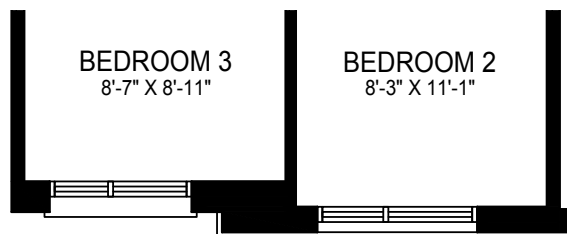




MAIN FLOOR • ELEV. A & B



ELEV. A



ELEV. B

SECOND FLOOR



## YOUR DREAM HOME AWAITS

Once you have selected your ideal townhome, you will have full access to our Design Studio where our experts will assist you in selecting the perfect finishing touches. With our expertise and your great taste, you can create the home you have always dreamt of.





# SPURRING INNOVATION

## TREASURE HILL

Our mission is to provide purchasers with homes that meet and exceed the highest industry standards. We take the journey of buying a new home and elevate it to a memorable experience. Treasure Hill has received multiple BILD awards over the years in acknowledgement of the quality we provide, and we bring this same quality to every home we build. Discover living the Treasure Hill way.

RECIPIENT OF 2019 BILD  
AWARD FOR PROJECT OF  
THE YEAR – LOW RISE



Greybrook Realty Partners is a Toronto-based private equity firm that invests in large-scale real estate development and value-add assets. Over the years, Greybrook has built a strong reputation for its ability to create value for its investors, partners and communities.

Ranging from single-family homes, condominiums and purpose-built rental, to ultra-luxury condominium residences and retail, Greybrook's diversified real estate portfolio includes investments in more than 70 projects that represent over 35 million square feet of residential and commercial density in aggregate, with an estimated completion value of \$15 billion.



**TREASUREHILL.COM**



The first part of the document discusses the importance of maintaining accurate records in a laboratory setting. It emphasizes the need for clear labeling and consistent data entry to ensure the reliability of experimental results. The text also touches upon the ethical considerations of data handling and the responsibilities of researchers in this regard.

Subsequent sections delve into the practical aspects of laboratory safety, including the use of personal protective equipment (PPE) and the proper disposal of hazardous materials. The author provides detailed instructions on how to conduct safety drills and how to respond to various types of emergencies, such as chemical spills or fires.

The final portion of the document focuses on the importance of teamwork and communication in a laboratory environment. It highlights the benefits of regular team meetings and the use of collaborative tools to manage projects and share resources. The author concludes by encouraging a culture of continuous learning and improvement within the laboratory.

---

# TREASURE HILL

---