



TYPE B / URBAN TOWNS

ELEVATION A

FRONT ELEVATION



**TYPE B
ELEVATION "A3"**
REV. End Condition
BRIN [TH4]
ELA [TH5]
VALE [TH6]

**TYPE B
ELEVATION "A1"**
STD.
BRIN [TH4]
ELA [TH5]
VALE [TH6]

**TYPE B
ELEVATION "A2"**
REV. Corner Upgrade
BRIN [TH4]
ELA [TH5]
VALE [TH6]

REAR ELEVATION

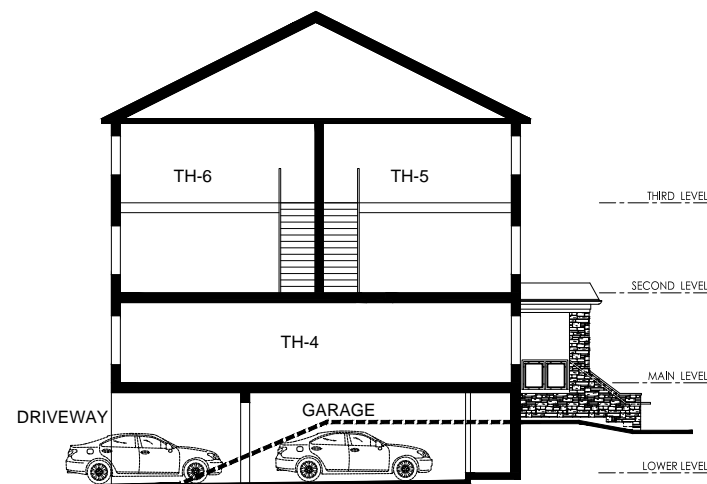


**TYPE B
ELEVATION "A2"**
REV. Corner Upgrade
BRIN [TH4]
ELA [TH5]
VALE [TH6]

**TYPE B
ELEVATION "A1"**
STD.
BRIN [TH4]
ELA [TH5]
VALE [TH6]

**TYPE B
ELEVATION "A3"**
REV. End Condition
BRIN [TH4]
ELA [TH5]
VALE [TH6]

TYPE B CROSS SECTION



TYPE B / ELEVATION "A1"
Interior



FRONT
ELEV.



REAR
ELEV.

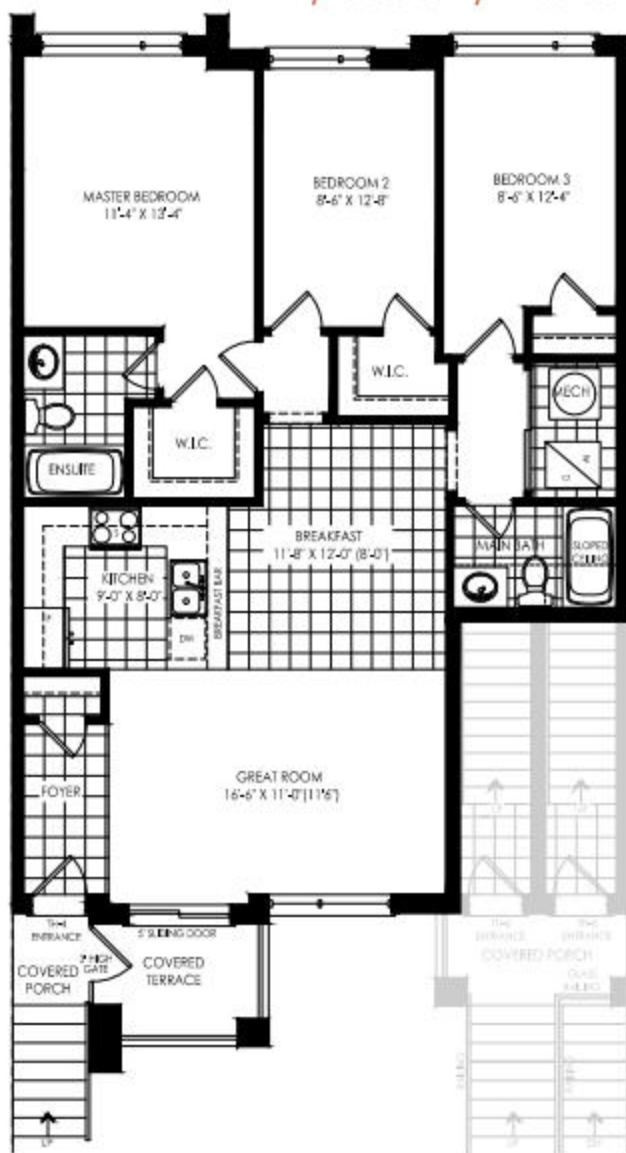
BRIN [TH-4]
ELA [TH-5]
VALE [TH-6]



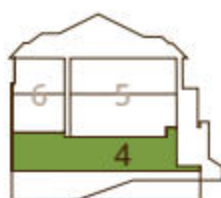


TYPE B / ELEVATION "A1"
BRIN [TH-4] / 1159 Sq.Ft.

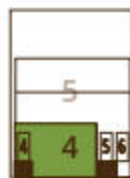
LOWER FLOOR / 3 bedroom / 2 bathroom



BACK VIEW



SIDE VIEW

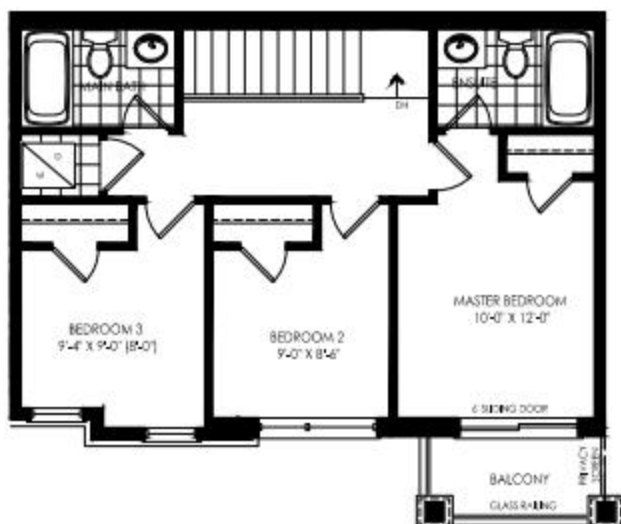


FRONT VIEW



TYPE B / ELEVATION "A1"
ELA [TH-5] / 1207 Sq.Ft.

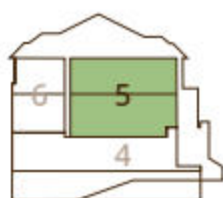
UPPER FLOOR / 3 bedroom / 2 bathroom



MAIN FLOOR / 1/2 bathroom



BACK VIEW



SIDE VIEW



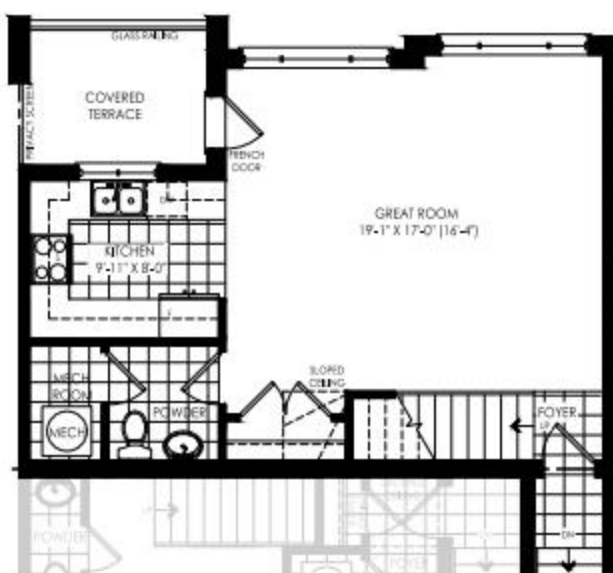
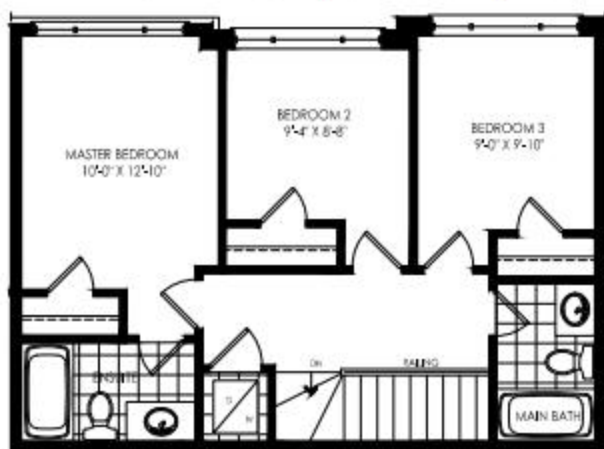
FRONT VIEW

Prices & specifications subject to change without notice. Usable square footage may vary from that stated herein. Furniture not included. Renderings are artist's concept only E. & O. E. © 2019 Pace Developments. All rights reserved.

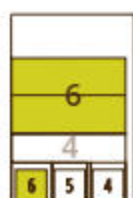


TYPE B / ELEVATION "A1"
VALE [TH-6] / 1294 Sq.Ft.

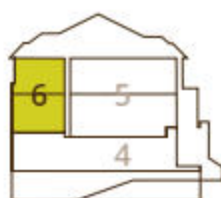
UPPER FLOOR / 3 bedroom / 2 bathroom



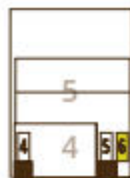
MAIN FLOOR / 1/2 bathroom



BACK VIEW



SIDE VIEW

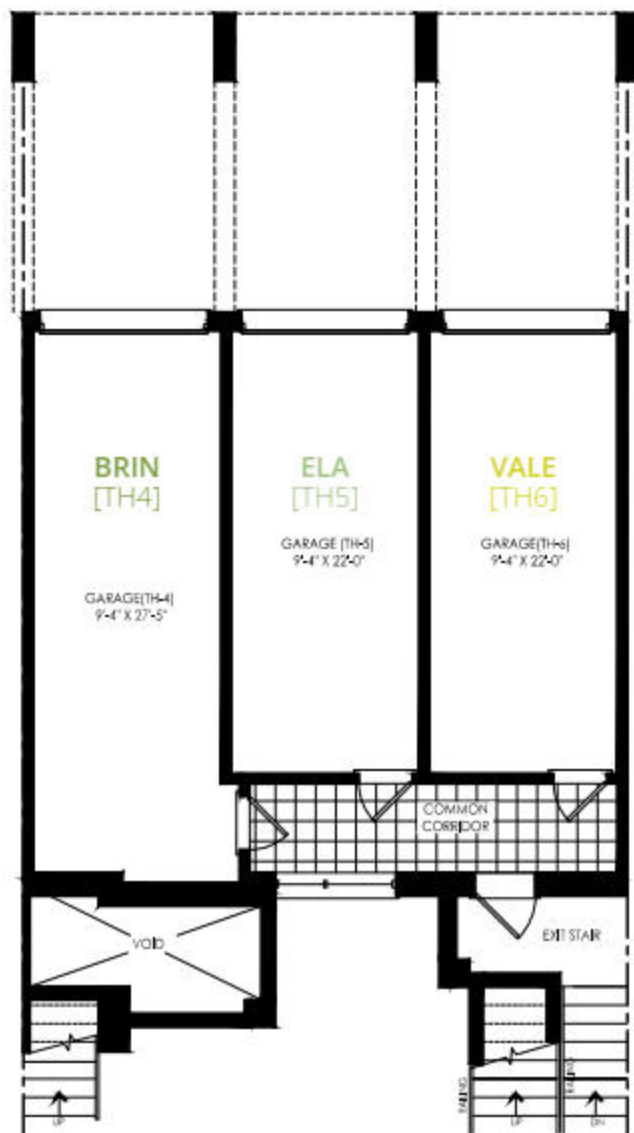


FRONT VIEW

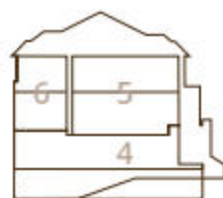


TYPE B / ELEVATION "A1"
BRIN [TH-4] / **ELA** [TH-5] / **VALE** [TH-6]

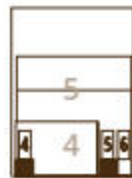
GARAGE LEVEL



BACK VIEW



SIDE VIEW



FRONT VIEW

Prices & specifications subject to change without notice. Usable square footage may vary from that stated herein. Furniture not included. Renderings are artist's concept only E. & O. E. © 2019 Pace Developments. All rights reserved.

TYPE B / ELEVATION "A2"
End Condition



FRONT
ELEV.



REAR
ELEV.



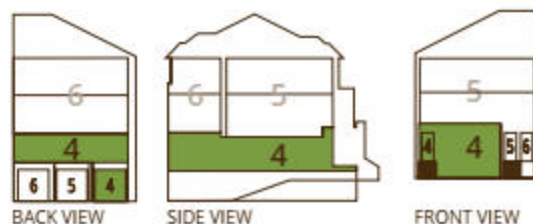
BRIN [TH-4]
ELA [TH-5]
VALE [TH-6]





TYPE B / ELEVATION "A2"
BRIN [TH-4] / 1191 Sq.Ft.

LOWER FLOOR / 3 bedroom / 2 bathroom

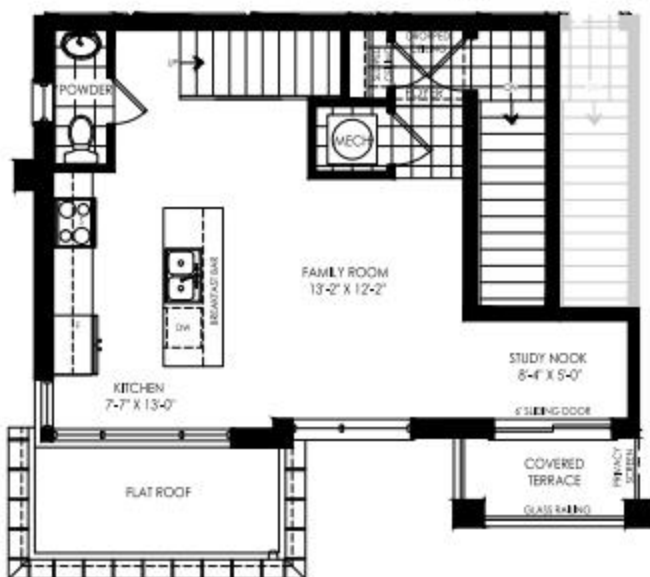
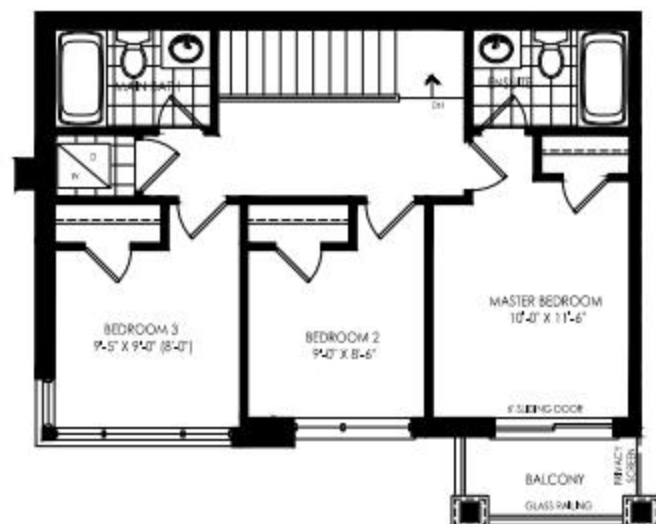




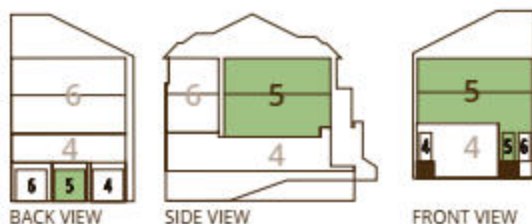
TYPE B / ELEVATION "A2"

ELA [TH-5] / 1237 Sq.Ft.

UPPER FLOOR / 3 bedroom / 2 bathroom



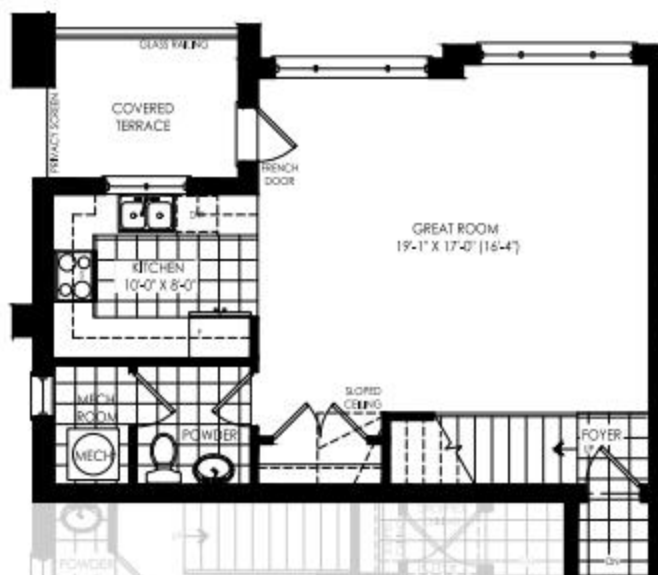
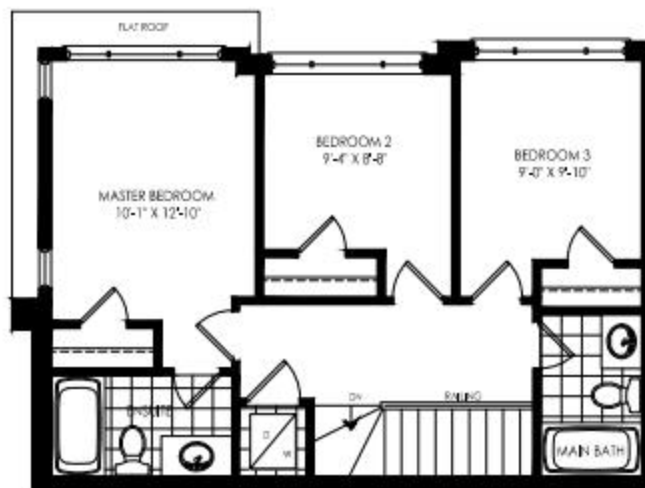
MAIN FLOOR / 1/2 bathroom



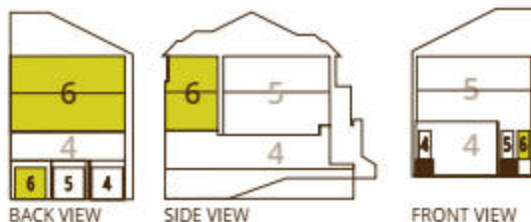


TYPE B / ELEVATION "A2"
VALE [TH-6] / 1316 Sq.Ft.

UPPER FLOOR / 3 bedroom / 2 bathroom



MAIN FLOOR / 1/2 bathroom



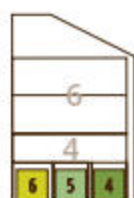
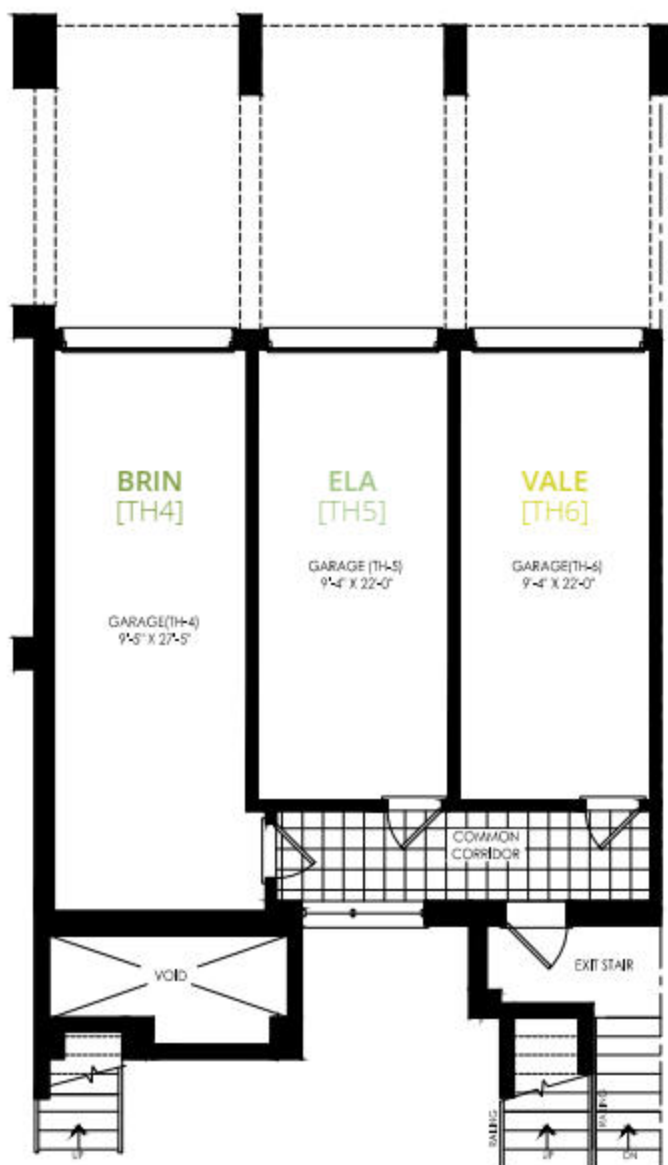
Prices & specifications subject to change without notice. Usable square footage may vary from that stated herein. Furniture not included. Renderings are artist's concept only E. & O. E. © 2019 Pace Developments. All rights reserved.



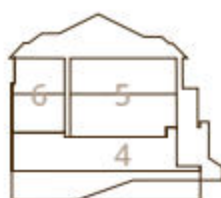
TYPE B / ELEVATION "A2"

BRIN [TH-4] / **ELA** [TH-5] / **VALE** [TH-6]

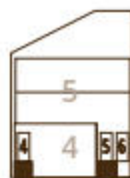
GARAGE LEVEL



BACK VIEW



SIDE VIEW



FRONT VIEW

TYPE B / ELEVATION "A3"
End Condition



FRONT
ELEV.



REAR
ELEV.

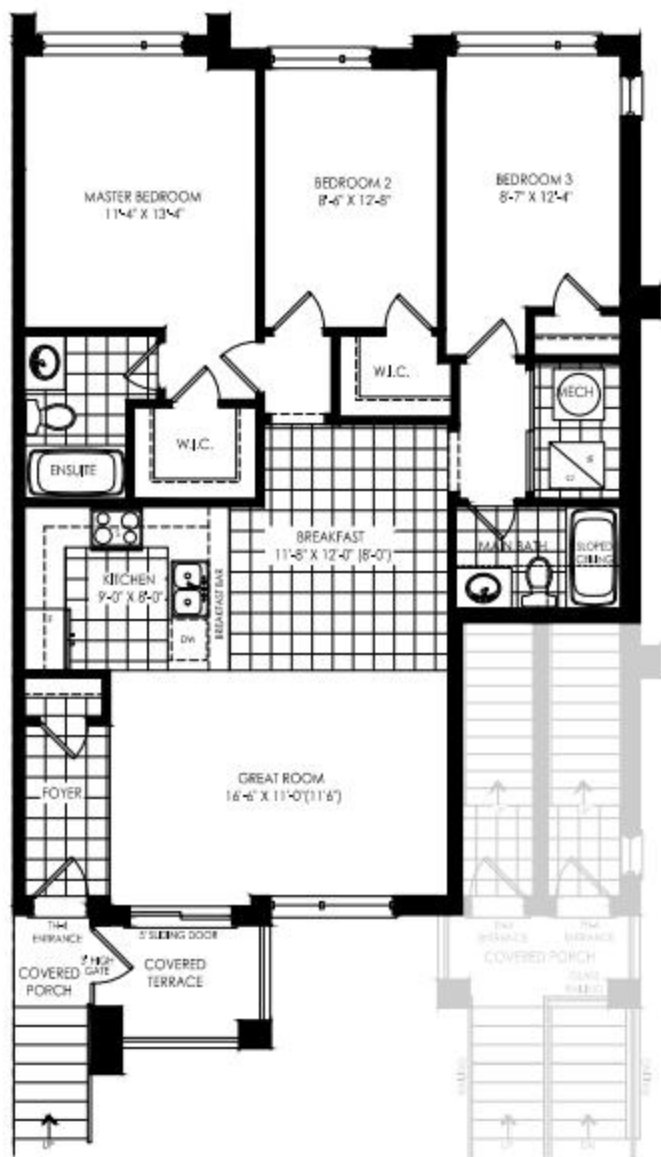
BRIN [TH-4]
ELA [TH-5]
VALE [TH-6]



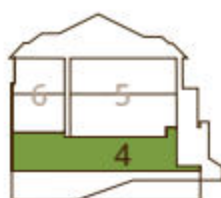


TYPE B / ELEVATION "A3"
BRIN [TH-4] / 1174 Sq.Ft.

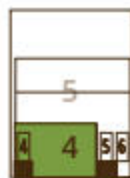
LOWER FLOOR / 3 bedroom / 2 bathroom



BACK VIEW



SIDE VIEW

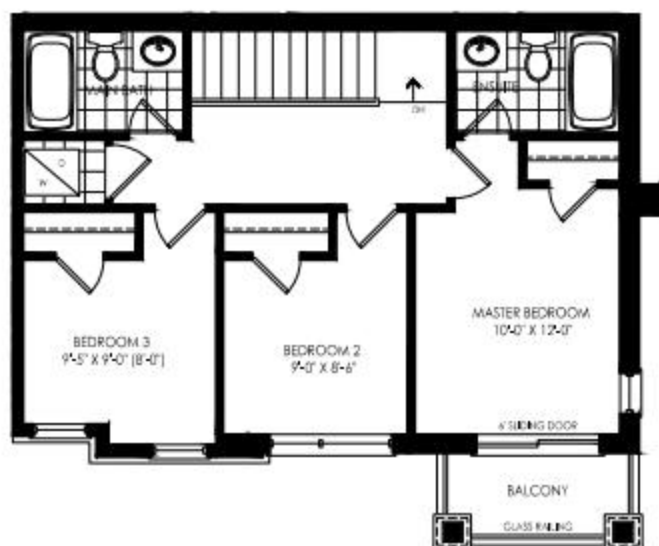


FRONT VIEW



TYPE B / ELEVATION "A3"
ELA [TH-5] / 1221 Sq.Ft.

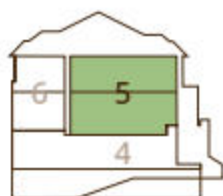
UPPER FLOOR / 3 bedroom / 2 bathroom



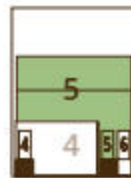
MAIN FLOOR / 1/2 bathroom



BACK VIEW



SIDE VIEW



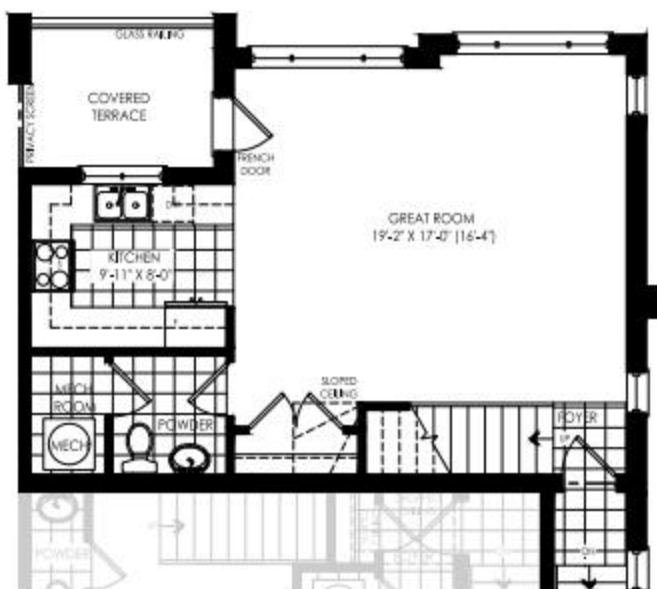
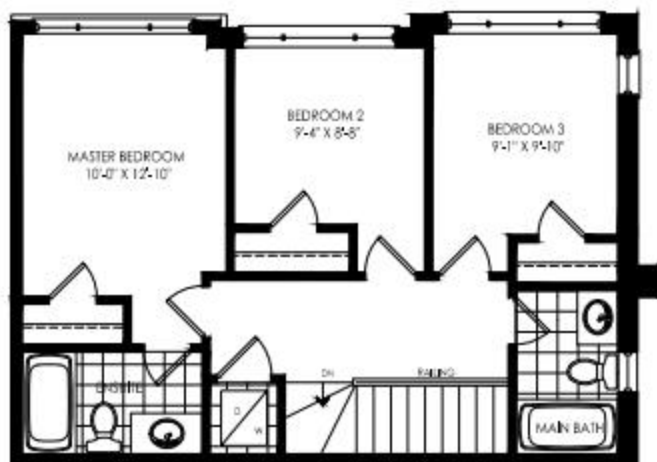
FRONT VIEW

Prices & specifications subject to change without notice. Usable square footage may vary from that stated herein. Furniture not included. Renderings are artist's concept only E. & O. E. © 2019 Pace Developments. All rights reserved.

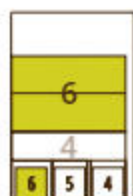


TYPE B / ELEVATION "A3"
VALE [TH-6] / 1327 Sq.Ft.

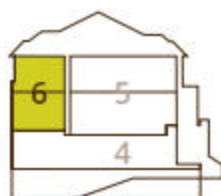
UPPER FLOOR / 3 bedroom / 2 bathroom



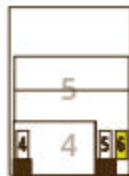
MAIN FLOOR / 1/2 bathroom



BACK VIEW



SIDE VIEW

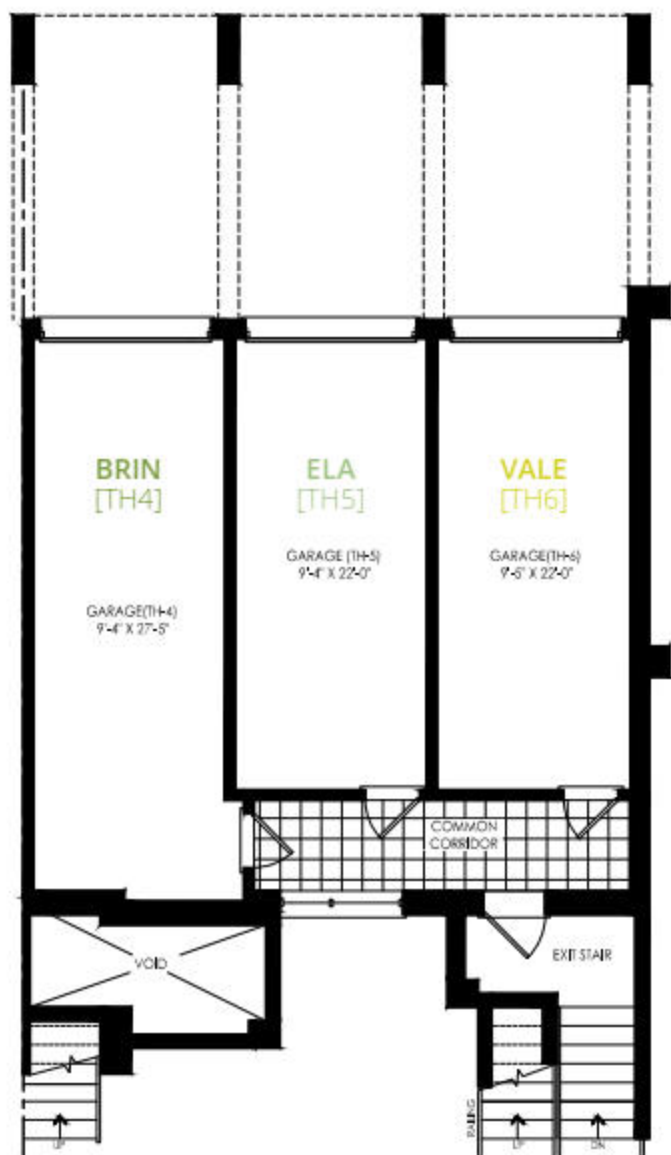


FRONT VIEW

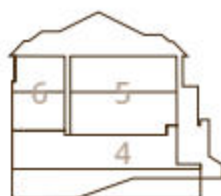


TYPE B / ELEVATION "A3"
BRIN [TH-4] / **ELA** [TH-5] / **VALE** [TH-6]

GARAGE LEVEL



BACK VIEW



SIDE VIEW



FRONT VIEW

TYPE B / **ELEVATION "A2"**
Upgraded End Condition



FRONT
ELEV.



REAR
ELEV.



BRIN [TH-4]
ELA [TH-5]
VALE [TH-6]



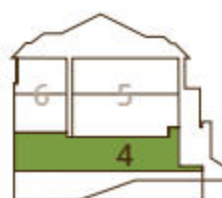


TYPE B / **ELEVATION "A2 UPGRADE"**
BRIN [TH-4] / 1207 Sq.Ft.

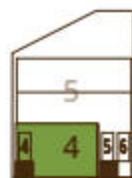
LOWER FLOOR / 3 bedroom / 2 bathroom



BACK VIEW



SIDE VIEW

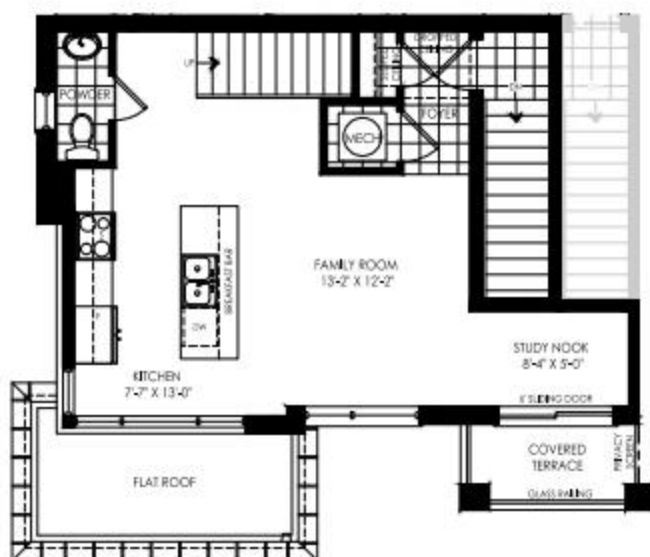
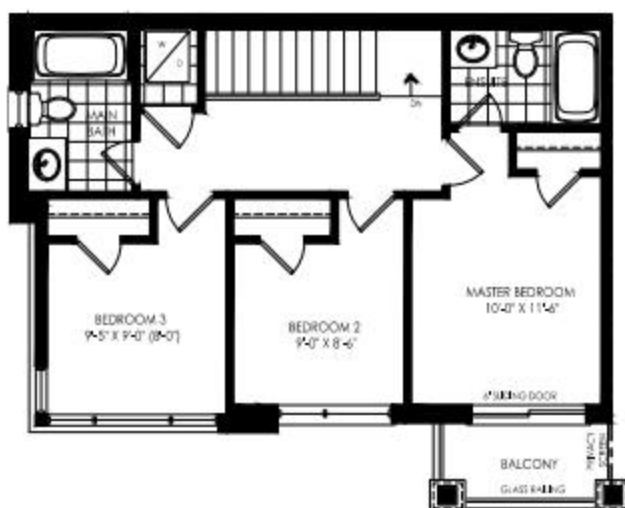


FRONT VIEW

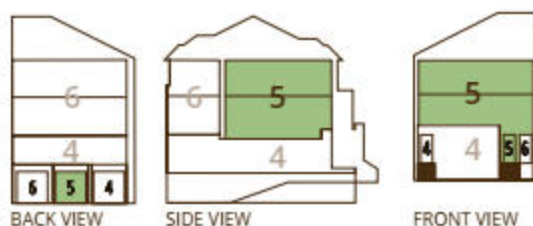


TYPE B / ELEVATION "A2 UPGRADE"
ELA [TH-5] / 1255 Sq.Ft.

UPPER FLOOR / 3 bedroom / 2 bathroom



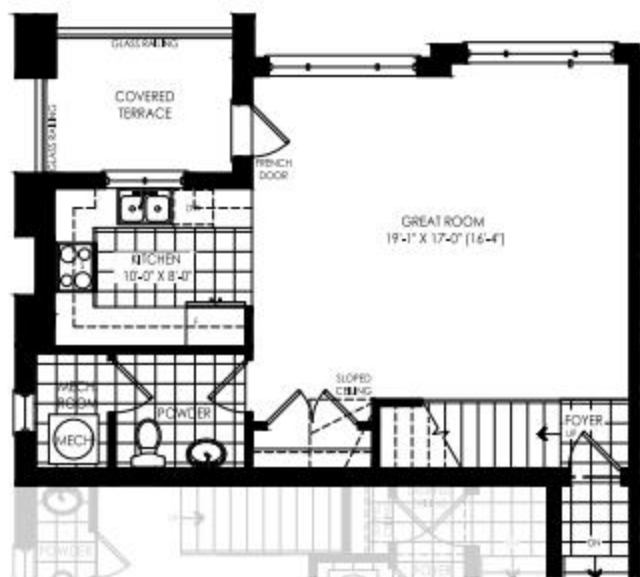
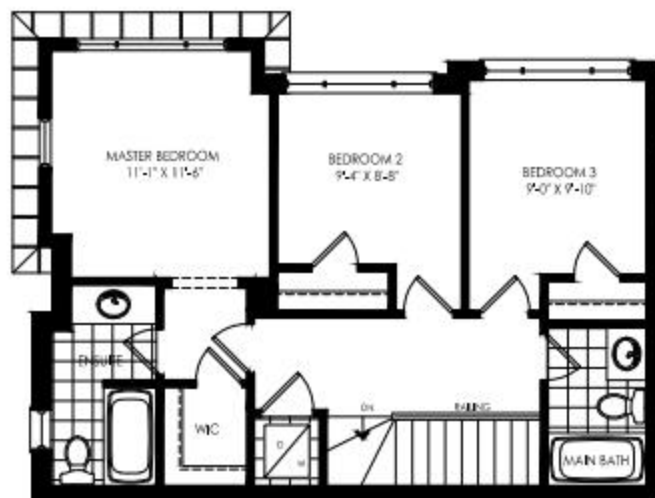
MAIN FLOOR / 1/2 bathroom



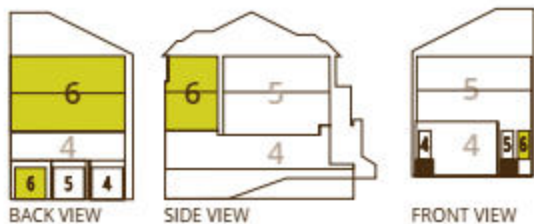


TYPE B / ELEVATION "A2 UPGRADE"
VALE [TH-6] / 1354 Sq.Ft.

UPPER FLOOR / 3 bedroom / 2 bathroom



MAIN FLOOR / 1/2 bathroom



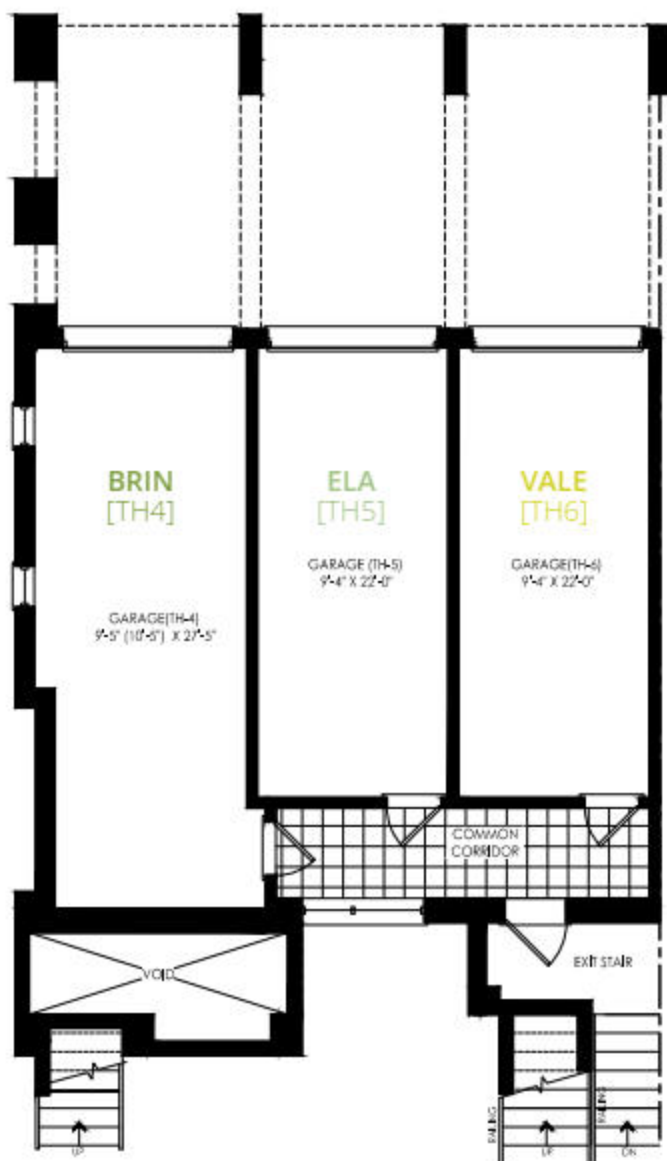
Prices & specifications subject to change without notice. Usable square footage may vary from that stated herein. Furniture not included. Renderings are artist's concept only E. & O. E. © 2019 Pace Developments. All rights reserved.



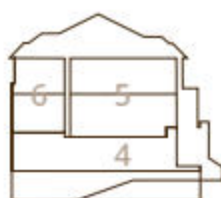
TYPE B / ELEVATION "A2 UPGRADE"

BRIN [TH-4] / **ELA** [TH-5] / **VALE** [TH-6]

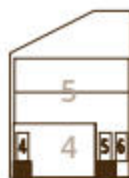
GARAGE LEVEL



BACK VIEW



SIDE VIEW



FRONT VIEW



TYPE B / URBAN TOWNS

ELEVATION B

FRONT ELEVATION



TYPE B
ELEVATION "B2"
STD. End Condition
BRIN [TH4]
ELA [TH5]
VALE [TH6]

TYPE B
ELEVATION "B1"
REV.
BRIN [TH4]
ELA [TH5]
VALE [TH6]

TYPE B
ELEVATION "B1"
STD.
BRIN [TH4]
ELA [TH5]
VALE [TH6]

TYPE B
ELEVATION "B1"
REV.
BRIN [TH4]
ELA [TH5]
VALE [TH6]

TYPE B
ELEVATION "B3"
STD. End Condition
BRIN [TH4]
ELA [TH5]
VALE [TH6]

REAR ELEVATION



TYPE B
ELEVATION "B3"
STD. End Condition
BRIN [TH4]
ELA [TH5]
VALE [TH6]

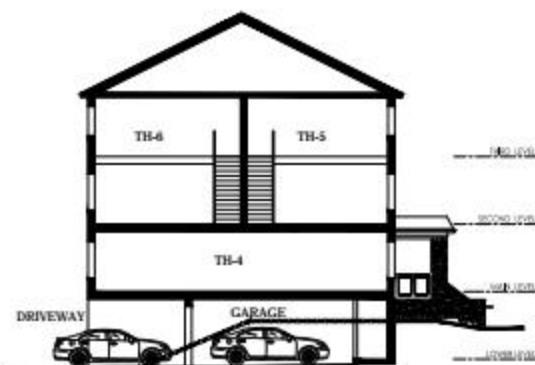
TYPE B
ELEVATION "B1"
REV.
BRIN [TH4]
ELA [TH5]
VALE [TH6]

TYPE B
ELEVATION "B1"
STD.
BRIN [TH4]
ELA [TH5]
VALE [TH6]

TYPE B
ELEVATION "B1"
REV.
BRIN [TH4]
ELA [TH5]
VALE [TH6]

TYPE B
ELEVATION "B2"
STD. End Condition
BRIN [TH4]
ELA [TH5]
VALE [TH6]

TYPE B CROSS SECTION



TYPE B / ELEVATION "B1"
Interior



FRONT
ELEV.



BRIN [TH-4]
ELA [TH-5]
VALE [TH-6]



REAR
ELEV.



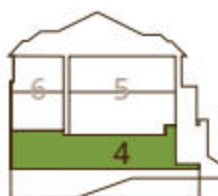


TYPE B / ELEVATION "B1"
BRIN [TH-4] / 1150 Sq.Ft.

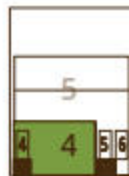
LOWER FLOOR / 3 bedroom / 2 bathroom



BACK VIEW



SIDE VIEW



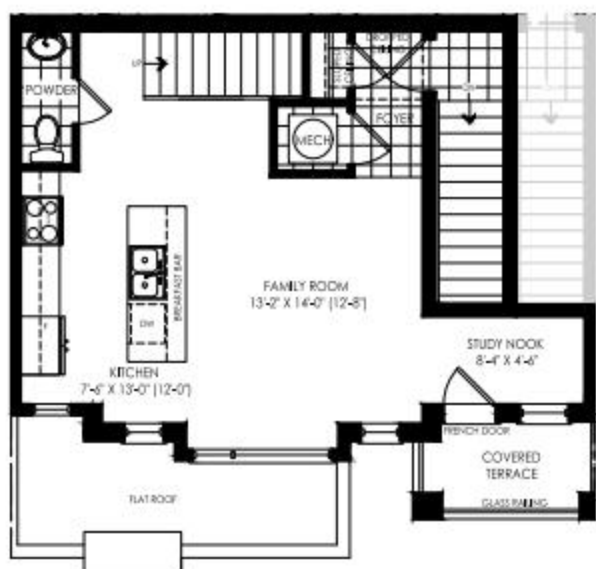
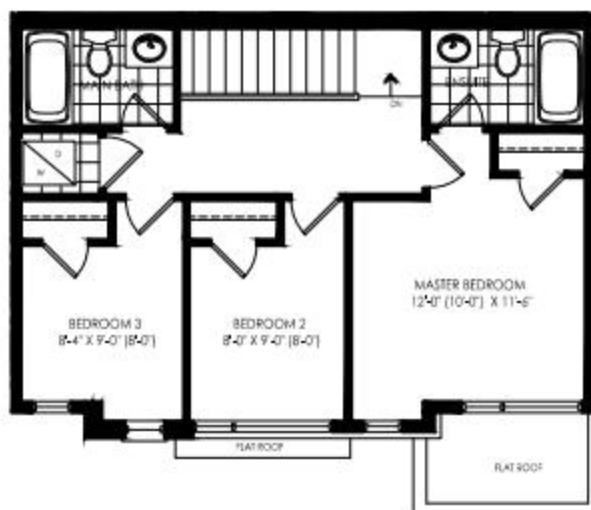
FRONT VIEW



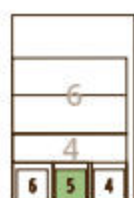
TYPE B / ELEVATION "B1"

ELA [TH-5] / 1209 Sq.Ft.

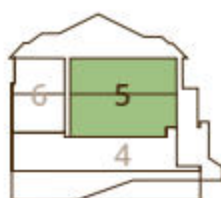
UPPER FLOOR / 3 bedroom / 2 bathroom



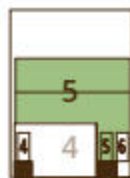
MAIN FLOOR / 1/2 bathroom



BACK VIEW



SIDE VIEW

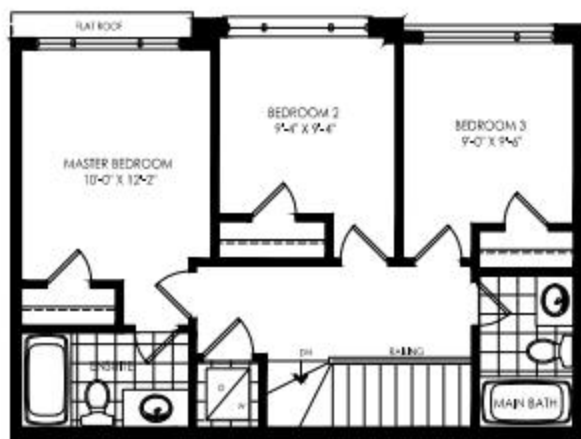


FRONT VIEW

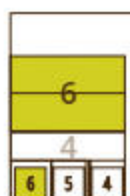


TYPE B / ELEVATION "B1"
VALE [TH-6] / 1289 Sq.Ft.

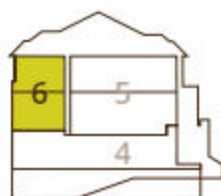
UPPER FLOOR / 3 bedroom / 2 bathroom



MAIN FLOOR / 1/2 bathroom



BACK VIEW



SIDE VIEW

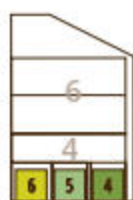
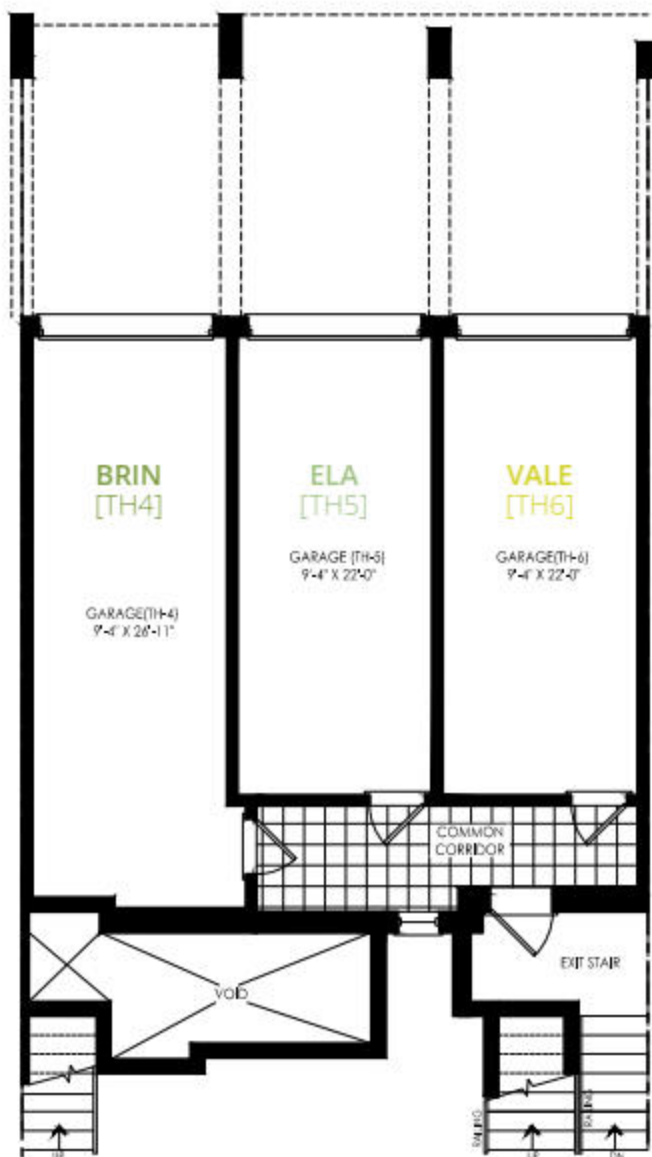


FRONT VIEW

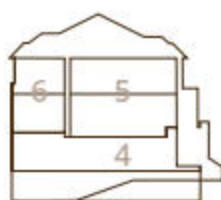


TYPE B / ELEVATION "B1"
BRIN [TH-4] / **ELA** [TH-5] / **VALE** [TH-6]

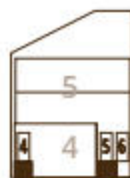
GARAGE LEVEL



BACK VIEW



SIDE VIEW



FRONT VIEW

TYPE B / ELEVATION "B2"
End Condition



FRONT
ELEV.



REAR
ELEV.

BRIN [TH-4]
ELA [TH-5]
VALE [TH-6]



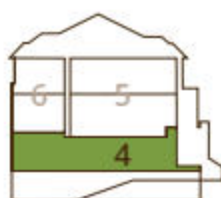


TYPE B / ELEVATION "B2"
BRIN [TH-4] / 1175 Sq.Ft.

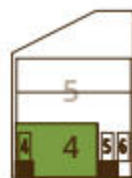
LOWER FLOOR / 3 bedroom / 2 bathroom



BACK VIEW



SIDE VIEW

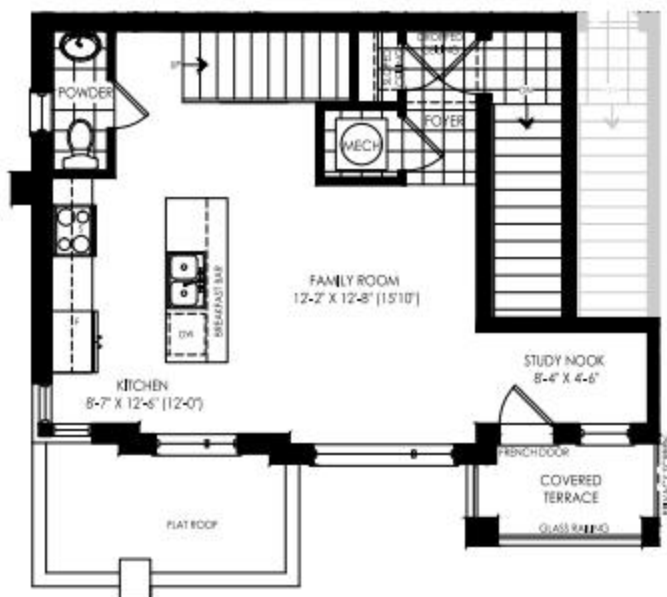
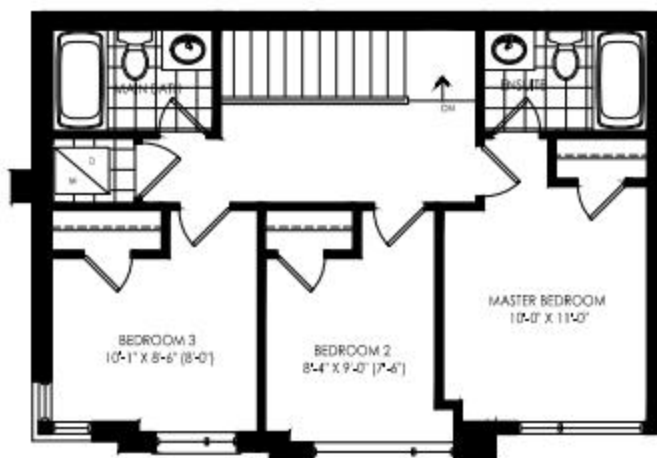


FRONT VIEW

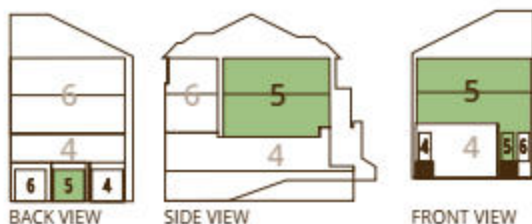


TYPE B / ELEVATION "B2"
ELA [TH-5] / 1218 Sq.Ft.

UPPER FLOOR / 3 bedroom / 2 bathroom



MAIN FLOOR / 1/2 bathroom

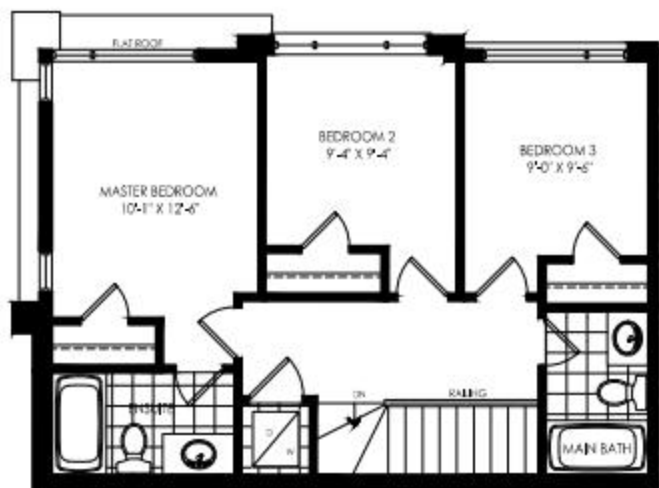


Prices & specifications subject to change without notice. Usable square footage may vary from that stated herein. Furniture not included. Renderings are artist's concept only E. & O. E. © 2018 Pace Developments. All rights reserved.

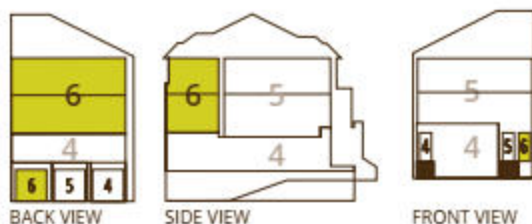


TYPE B / ELEVATION "B2"
VALE [TH-6] / 1311 Sq.Ft.

UPPER FLOOR / 3 bedroom / 2 bathroom



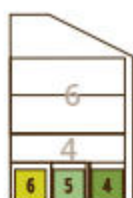
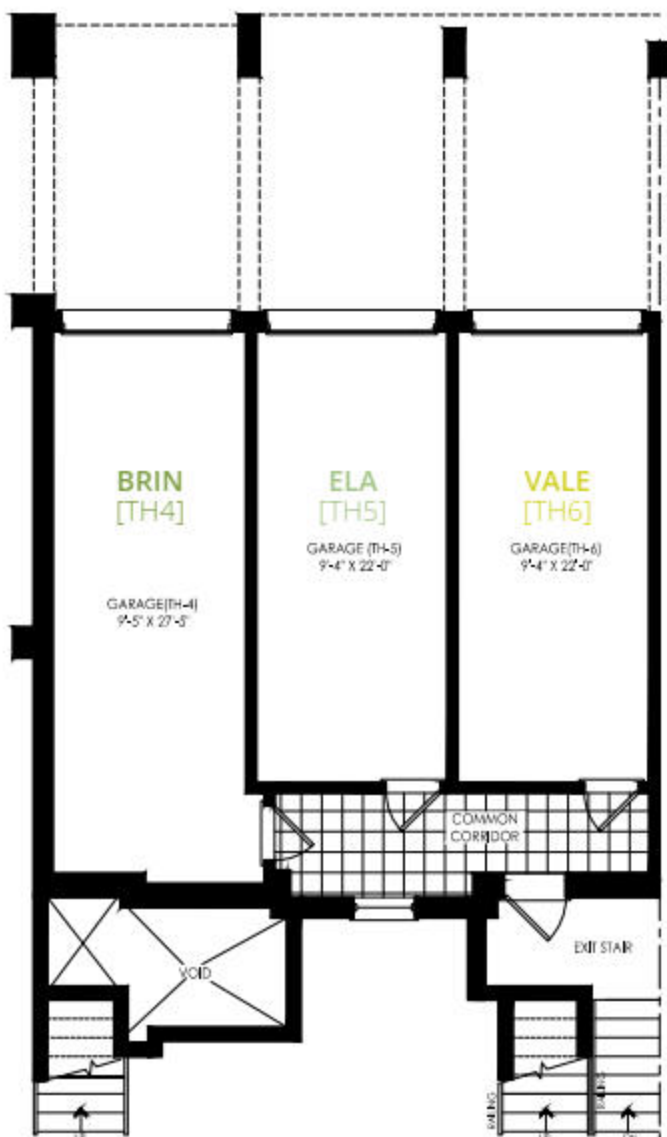
MAIN FLOOR / 1/2 bathroom



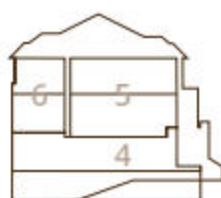


TYPE B / ELEVATION "B2"
BRIN [TH-4] / ELA [TH-5] / VALE [TH-6]

GARAGE LEVEL



BACK VIEW



SIDE VIEW



FRONT VIEW

TYPE B / ELEVATION "B2"
Upgraded End Condition



FRONT
ELEV.



REAR
ELEV.



BRIN [TH-4]
ELA [TH-5]
VALE [TH-6]



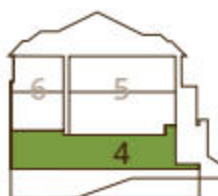


TYPE B / ELEVATION "B2 UPGRADE"
BRIN [TH-4] / 1200 Sq.Ft.

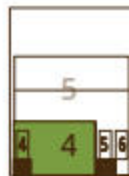
LOWER FLOOR / 3 bedroom / 2 bathroom



BACK VIEW



SIDE VIEW

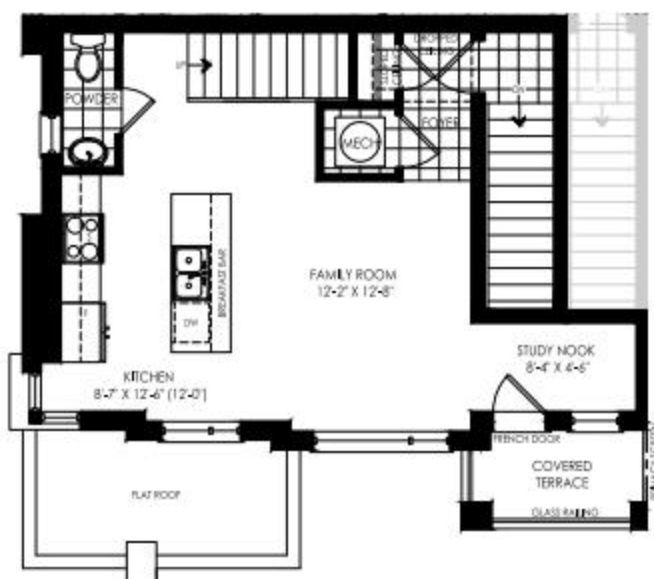
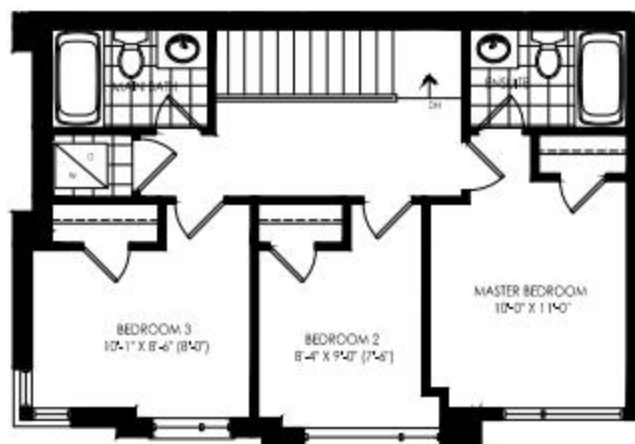


FRONT VIEW



TYPE B / ELEVATION "B2 UPGRADE"
ELA [TH-5] / 1237 Sq.Ft.

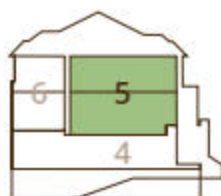
UPPER FLOOR / 3 bedroom / 2 bathroom



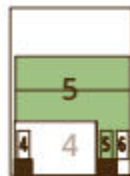
MAIN FLOOR / 1/2 bathroom



BACK VIEW



SIDE VIEW

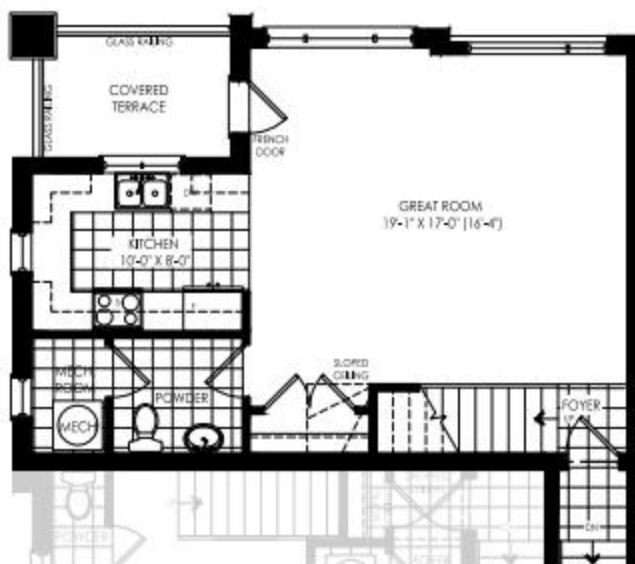
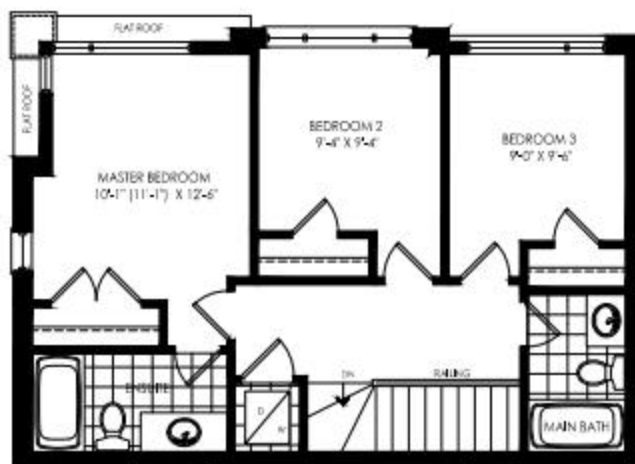


FRONT VIEW

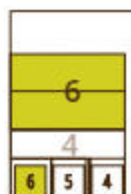


TYPE B / ELEVATION "B2 UPGRADE"
VALE [TH-6] / 1341 Sq.Ft.

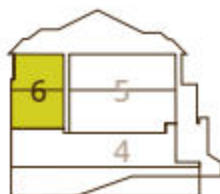
UPPER FLOOR / 3 bedroom / 2 bathroom



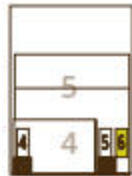
MAIN FLOOR / 1/2 bathroom



BACK VIEW



SIDE VIEW



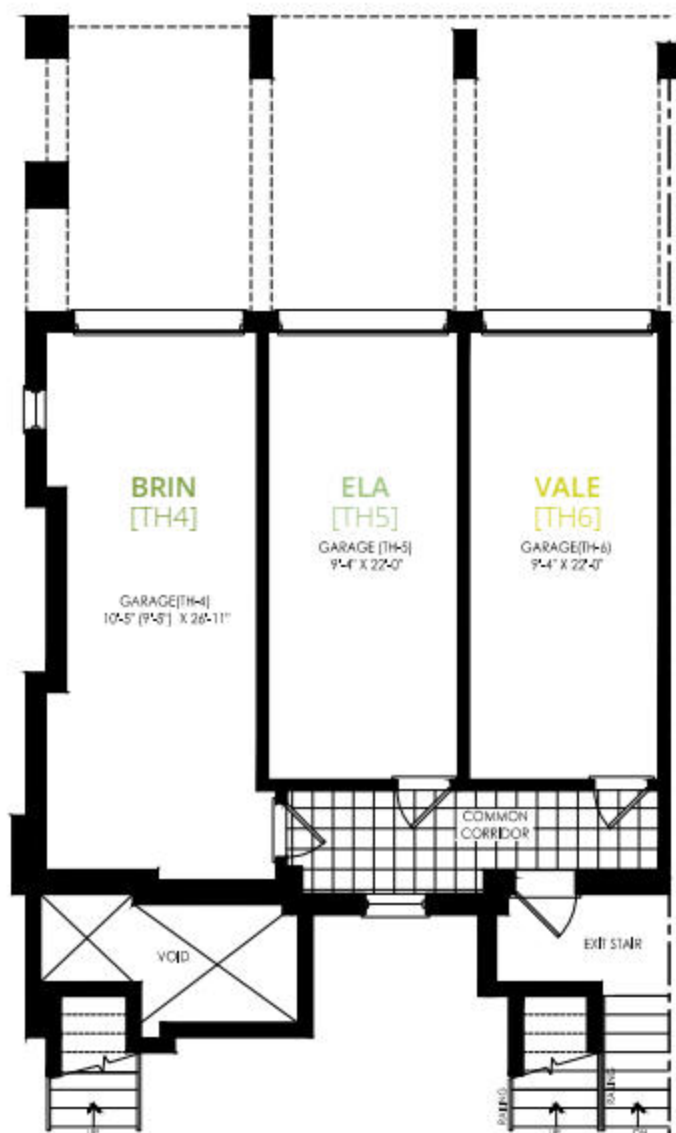
FRONT VIEW

Prices & specifications subject to change without notice. Usable square footage may vary from that stated herein. Furniture not included. Renderings are artist's concept only E. & O. E. © 2019 Pace Developments. All rights reserved.

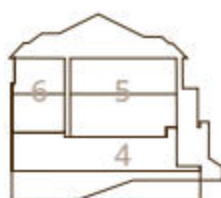


TYPE B / ELEVATION "B2 UPGRADE"
BRIN [TH-4] / **ELA** [TH-5] / **VALE** [TH-6]

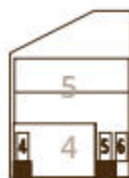
GARAGE LEVEL



BACK VIEW



SIDE VIEW



FRONT VIEW

TYPE B / ELEVATION "B3"
End Condition



Block 49, 51 and 59 only.



FRONT
ELEV.



REAR
ELEV.

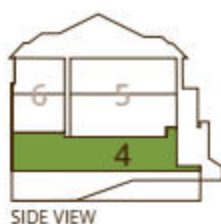
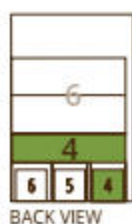
BRIN [TH-4]
ELA [TH-5]
VALE [TH-6]





TYPE B / ELEVATION "B3"
BRIN [TH-4] / 1163 Sq.Ft.

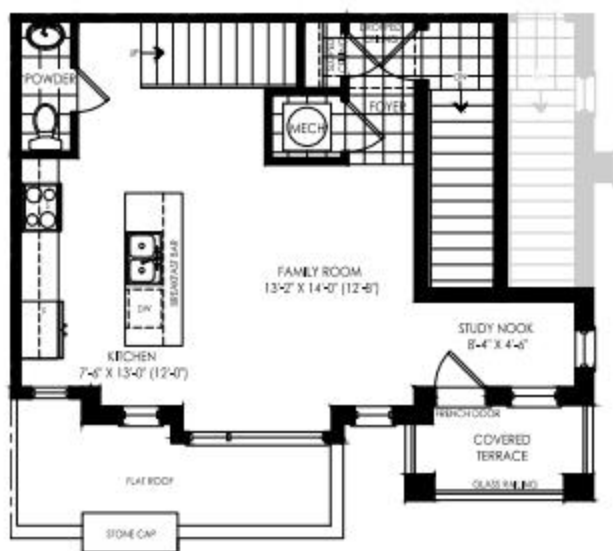
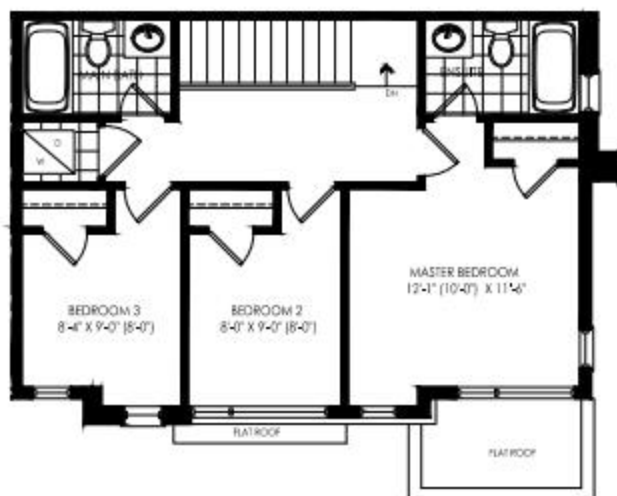
LOWER FLOOR / 3 bedroom / 2 bathroom





TYPE B / ELEVATION "B3"
ELA [TH-5] / 1215 Sq.Ft.

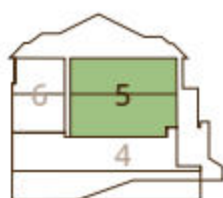
UPPER FLOOR / 3 bedroom / 2 bathroom



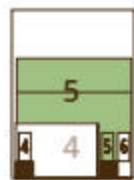
MAIN FLOOR / 1/2 bathroom



BACK VIEW



SIDE VIEW

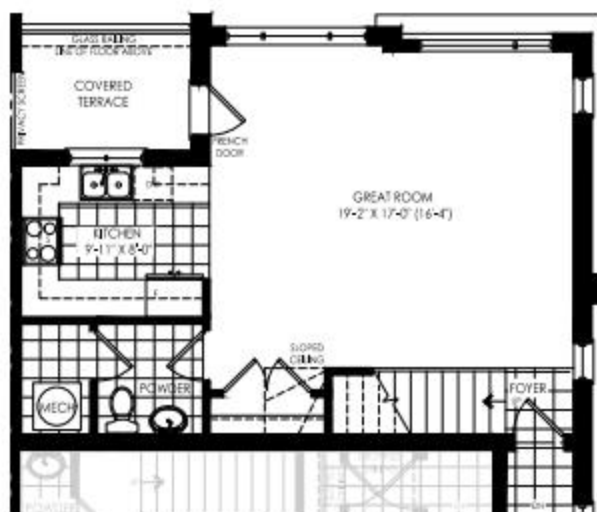
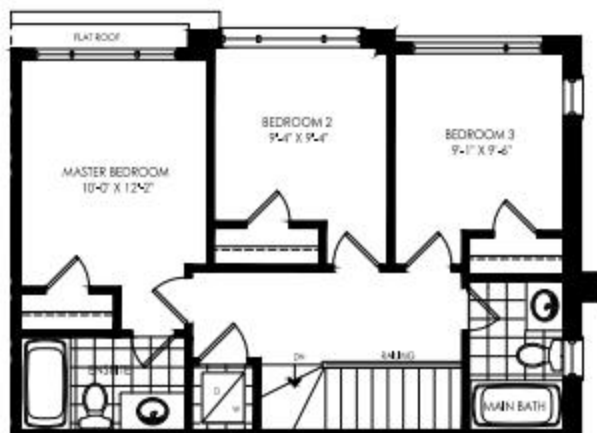


FRONT VIEW

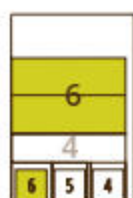


TYPE B / ELEVATION "B3"
VALE [TH-6] / 1321 Sq.Ft.

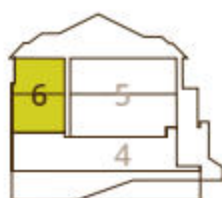
UPPER FLOOR / 3 bedroom / 2 bathroom



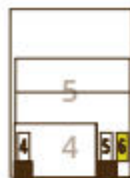
MAIN FLOOR / 1/2 bathroom



BACK VIEW



SIDE VIEW

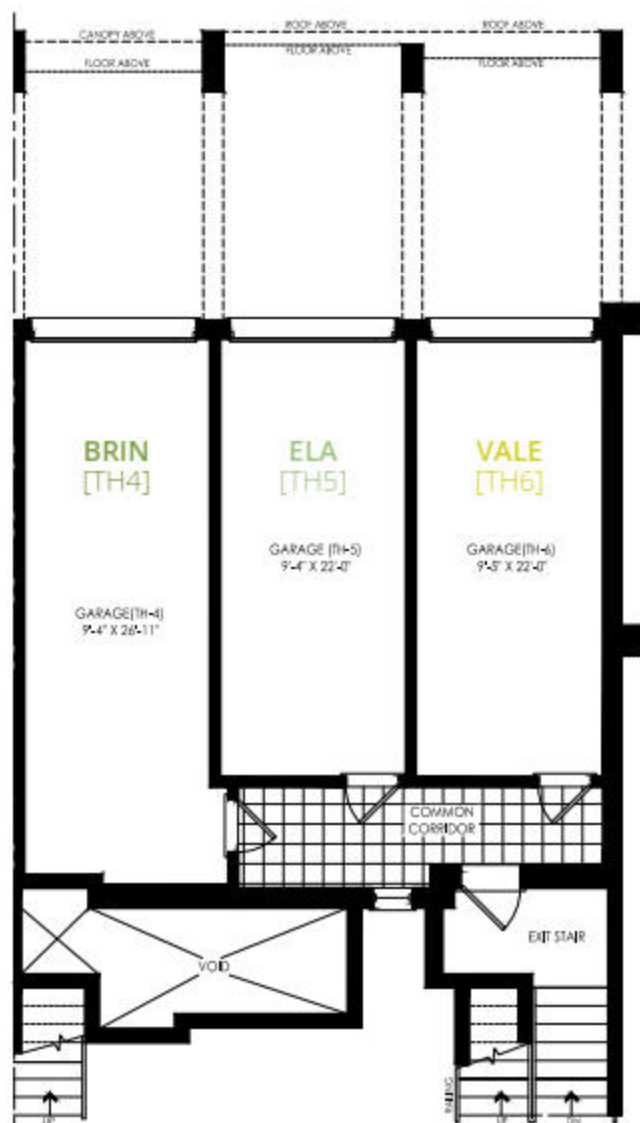


FRONT VIEW

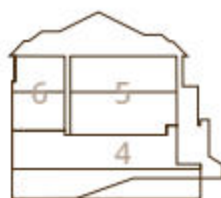


TYPE B / ELEVATION "B3"
BRIN [TH-4] / ELA [TH-5] / VALE [TH-6]

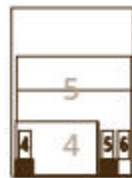
GARAGE LEVEL



BACK VIEW



SIDE VIEW



FRONT VIEW

FEATURES & FINISHES

UrbanTowns

Exterior Features

- Architecturally selected brick, stone, and cladding
- Architecturally selected energy efficient windows complete with thermal glazing and removable screens
- Access to personal garage by common corridor
- Private balcony/terrace with glass railing

Interior Features

- All ceilings are white stippled (excluding bathrooms and kitchen)
- 8' ceilings throughout
- Stylish white interior doors with modern hardware
- Modern 3¼" baseboards with 2¼" casings
- Ceramic floor tile in foyer
- 35oz. broadloom or laminate throughout
- Vinyl-coated wire closet shelving
- Stacked washer and dryer in white
- Elegant natural finished oak handrail and pickets on all finished area stairs. Staircase to be carpeted and stringers to be painted white

Kitchens

- Custom-designed contemporary kitchen cabinets
- Granite countertop
- Aquabrace single lever pull-out faucet with stainless steel sink
- Ceramic floor tile in kitchen
- Modern style backsplash
- Stainless steel finish appliance package including range, fridge, dishwasher, and over the range microwave
- Exhaust fan vented to the outside

Bathrooms

- Contemporary designed cabinetry
- Top-mount sink with laminate counter top
- Pedestal and/or vanity sink in powder room
- Aquabrace single-lever faucet
- Aquabrace shower/tub fixtures
- Aquabrace bathroom tissue dispenser
- Acrylic deep soaker tub
- Pressure balanced valves for tub & shower
- Ceramic tile for floor and tub surround
- Privacy locks on all bathroom doors
- Exhaust fans vented to the outside

Electrical & Comfort

- Conveniently located phone outlets in kitchen, living room, and bedrooms
- Light fixtures in foyer, halls, kitchen, living/dining room, bedroom and walk-in closets
- White "Decora" style switches and receptacles throughout
- Exterior GFI outlet at balcony and front entrance
- Heat/smoke and carbon monoxide detectors
- Energy efficient high-velocity furnace
- Energy efficient air conditioner
- Energy efficient tankless hot water
- ERV (Energy Recovery Ventilator) circulates fresh air into the home

All of the above specifications are from Vendor's standard samples and as per plan. Variations from Vendor's samples may occur in finishing materials, kitchen and vanity cabinets, floor and wall finishes due to normal production. The Vendor reserves the right to substitute materials and/or suppliers of equal or greater quality at any time at their sole discretion. Engineered laminate flooring may react to normal fluctuating humidity levels producing gapping or cupping, both considered to be within acceptable industry standards. Ceilings and walls may be modified to accommodate mechanical systems which may include installation of dropped ceilings or bulkheads. Prices, specifications and terms are subject to change without notice. E.80.E. 2018.