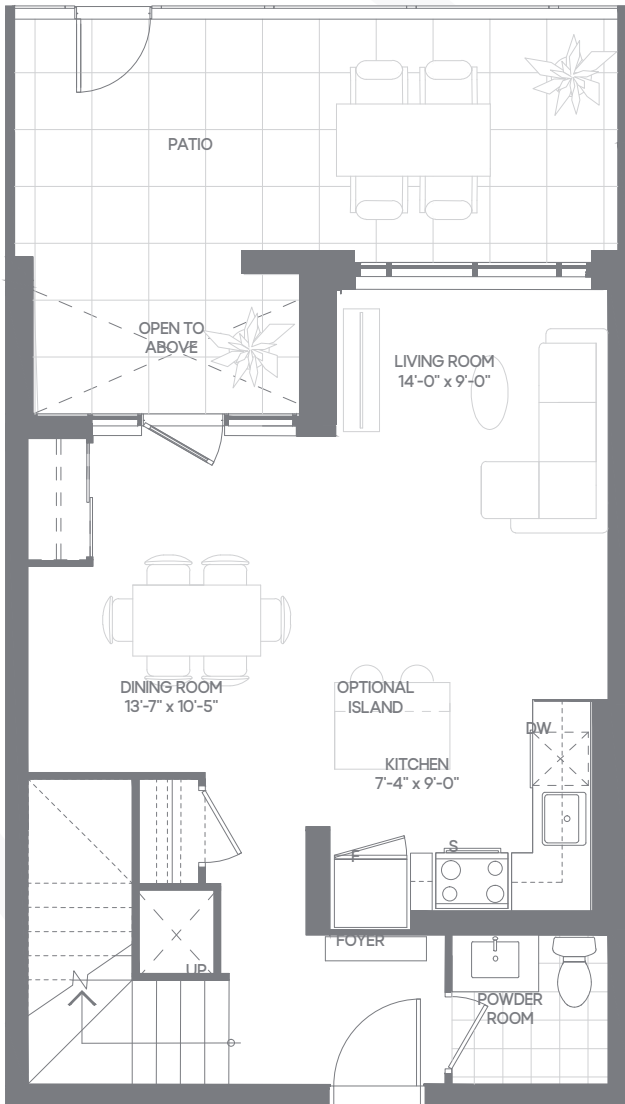
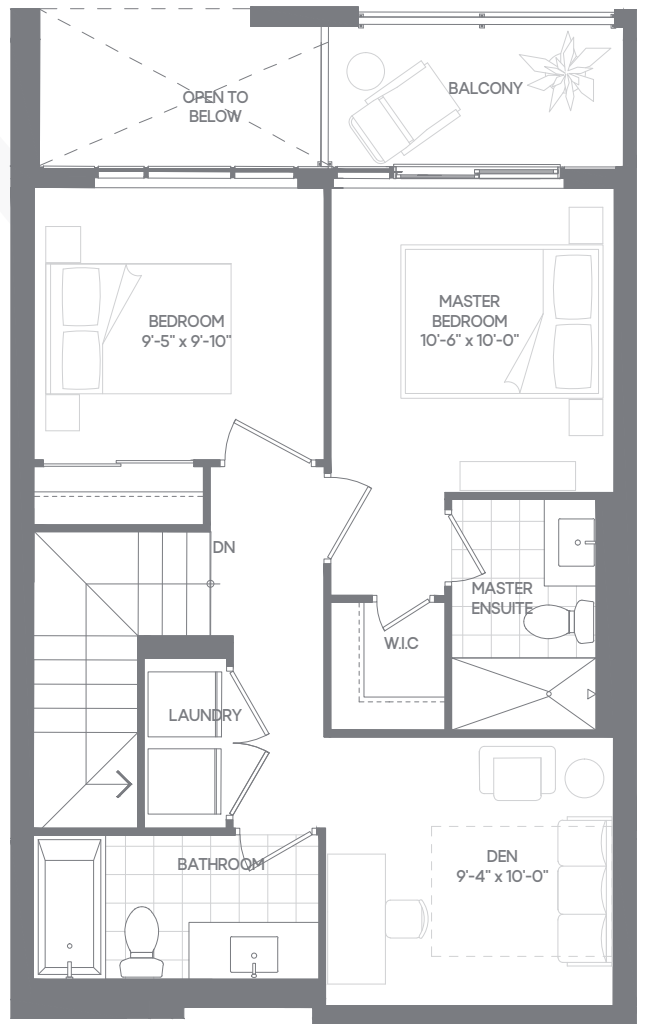


**TH-A (A)**  
**TWO BEDROOM+DEN**  
 SUITE AREA: 1180 SQ.FT.  
 EXTERIOR AREA: 253 SQ.FT.  
 TOTAL AREA: 1433 SQ.FT.

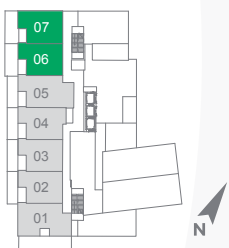


MAIN LEVEL



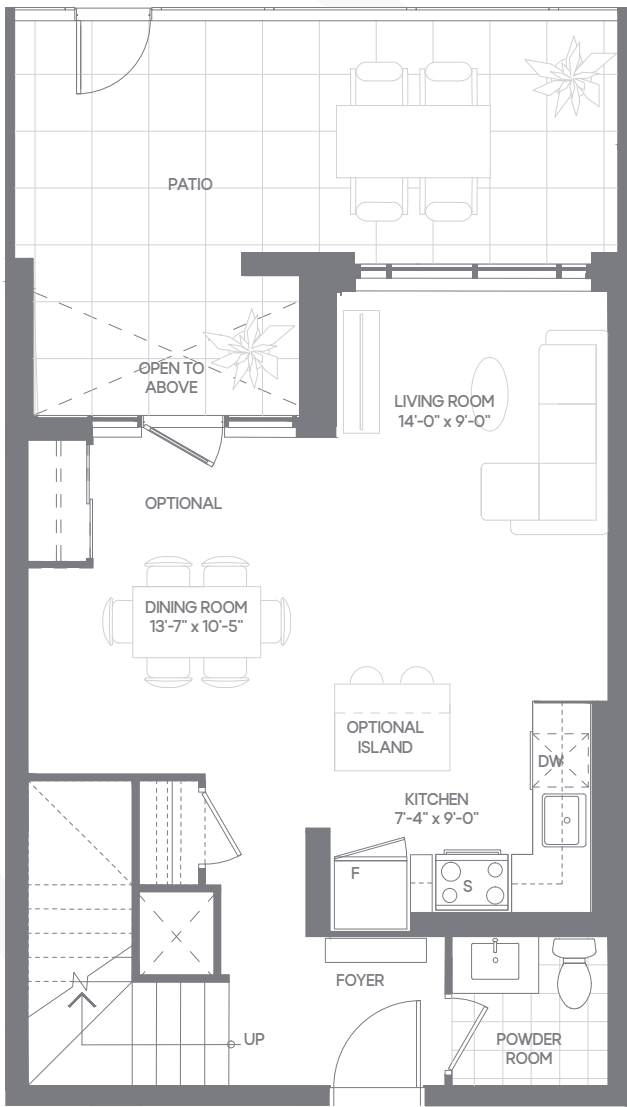
UPPER LEVEL

FLOOR 1

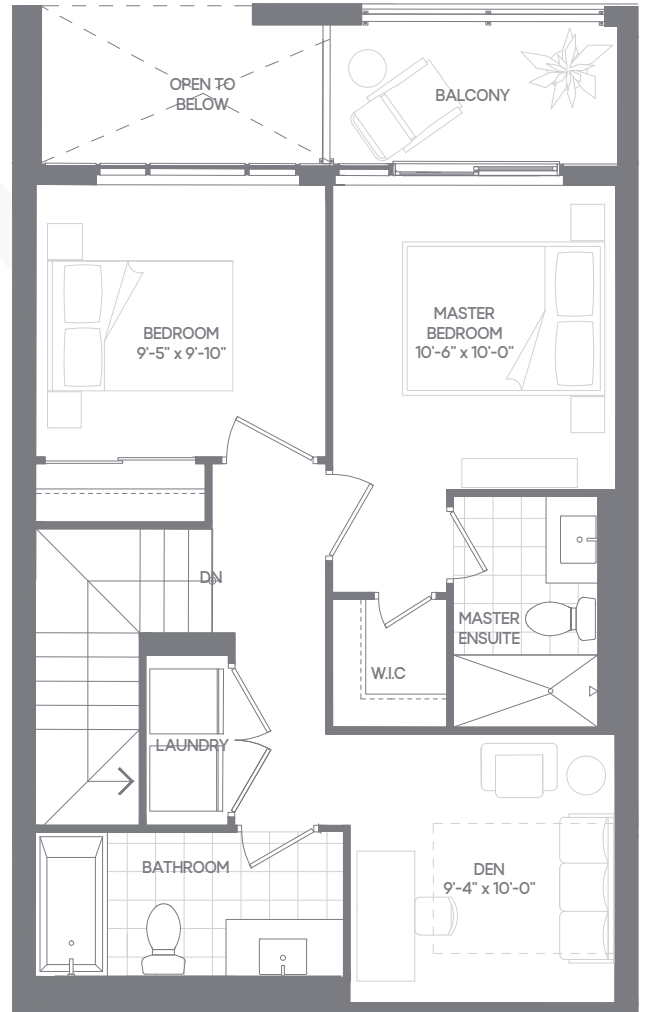


Floorplans are subject to change without notice. Actual dimensions and square footage may vary from that stated hereon. Floorplans are not to scale and may be mirror image of what is shown. Window and door locations, size and type may vary without notice. Bulkheads required for construction purposes have not been indicated. Tile patterns may vary. Any furniture and/or islands not included. Balcony, terrace and/or patio square footage is approximate, not included in the suite area and may vary depending on floor level, location and other factors, and is subject to change without notice. E. & O.E. April 2021

**TH-A (B)**  
**TWO BEDROOM+DEN**  
 SUITE AREA: 1180 SQ.FT.  
 EXTERIOR AREA: 217 SQ.FT.  
 TOTAL AREA: 1397 SQ.FT.

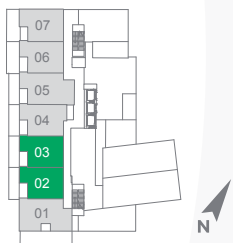


MAIN LEVEL



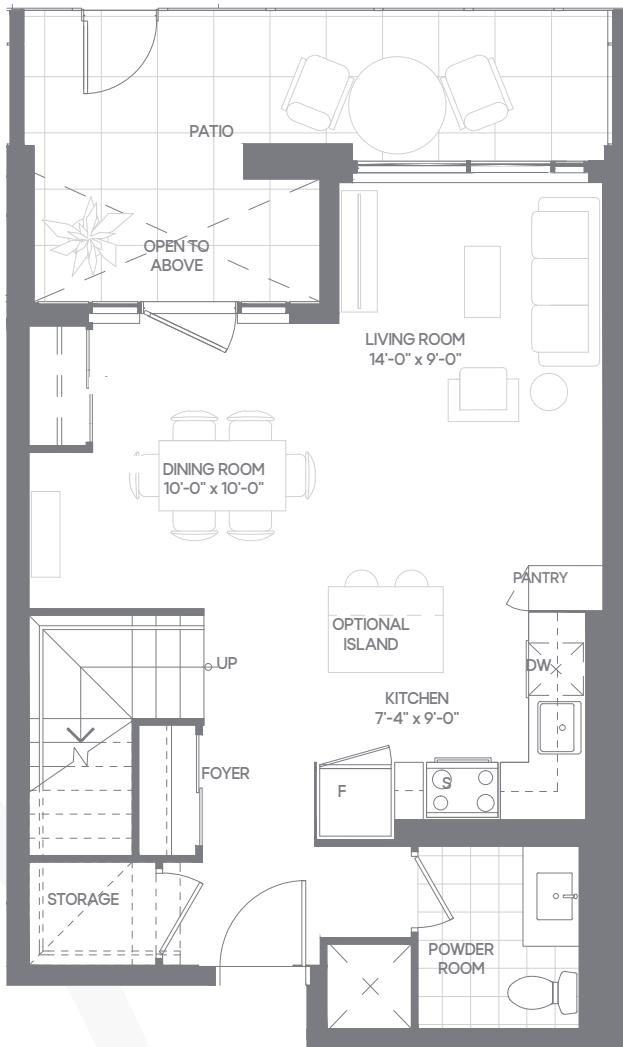
UPPER LEVEL

FLOOR 1

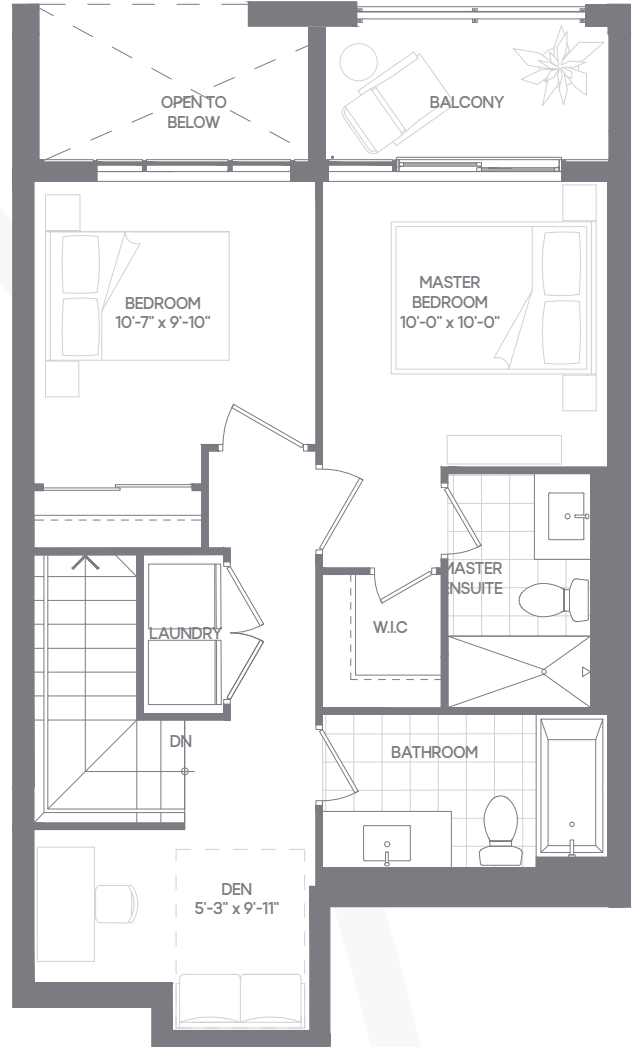


Floorplans are subject to change without notice. Actual dimensions and square footage may vary from that stated hereon. Floorplans are not to scale and may be mirror image of what is shown. Window and door locations, size and type may vary without notice. Bulkheads required for construction purposes have not been indicated. Tile patterns may vary. Any furniture and/or islands not included. Balcony, terrace and/or patio square footage is approximate, not included in the suite area and may vary depending on floor level, location and other factors, and is subject to change without notice. E. & O.E. April 2021

**TH-B**  
**TWO BEDROOM+DEN**  
 SUITE AREA: 1183 SQ.FT.  
 EXTERIOR AREA: 195 SQ.FT.  
 TOTAL AREA: 1378 SQ.FT.

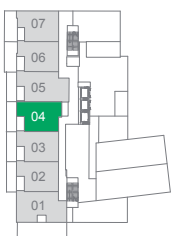


MAIN LEVEL



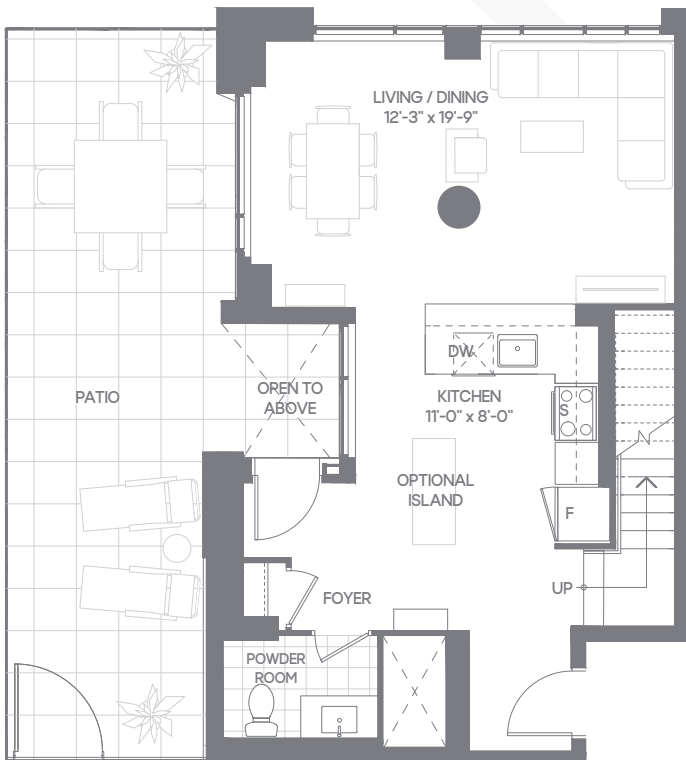
UPPER LEVEL

FLOOR 1

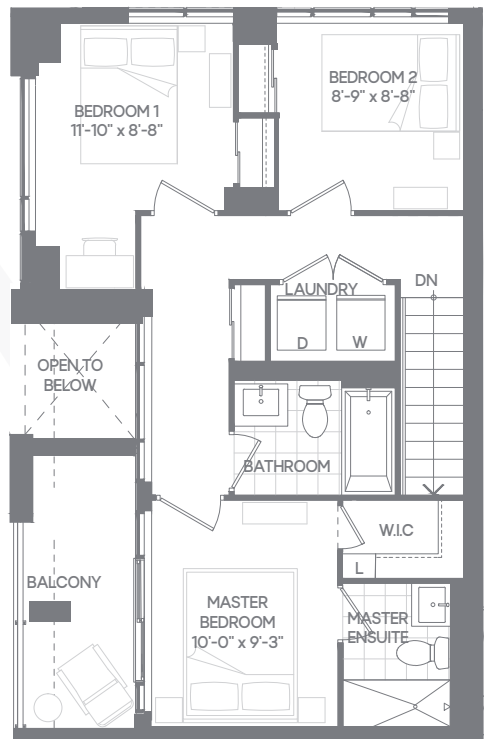


Floorplans are subject to change without notice. Actual dimensions and square footage may vary from that stated hereon. Floorplans are not to scale and may be mirror image of what is shown. Window and door locations, size and type may vary without notice. Bulkheads required for construction purposes have not been indicated. Tile patterns may vary. Any furniture and/or islands not included. Balcony, terrace and/or patio square footage is approximate, not included in the suite area and may vary depending on floor level, location and other factors, and is subject to change without notice. E. & O.E. April 2021

**TH-C**  
**THREE BEDROOM**  
 SUITE AREA: 1314 SQ.FT.  
 EXTERIOR AREA: 418 SQ.FT.  
 TOTAL AREA: 1732 SQ.FT.



MAIN LEVEL



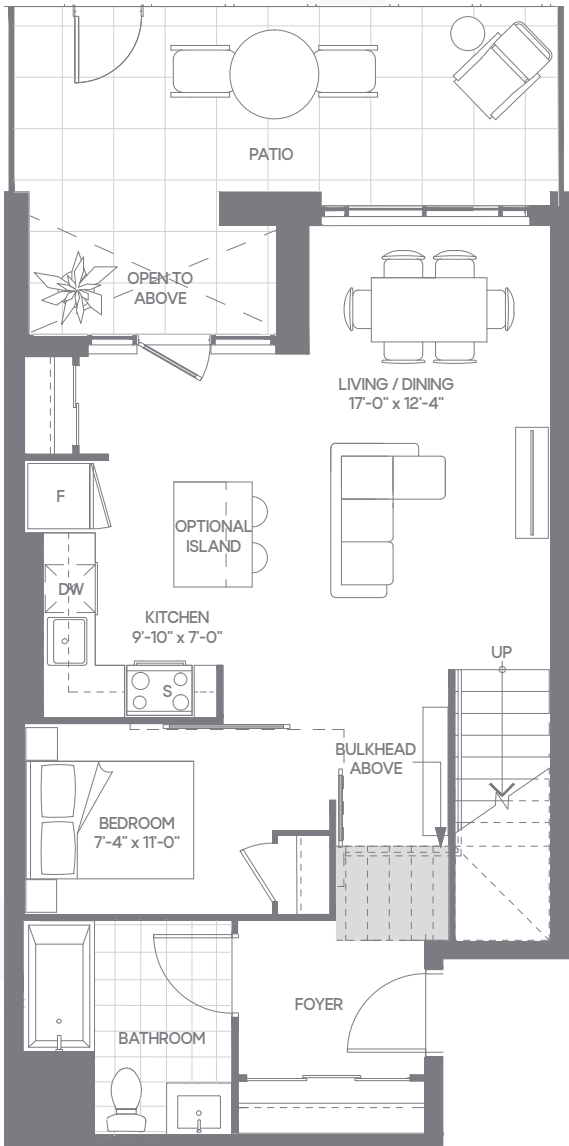
UPPER LEVEL

FLOOR 1

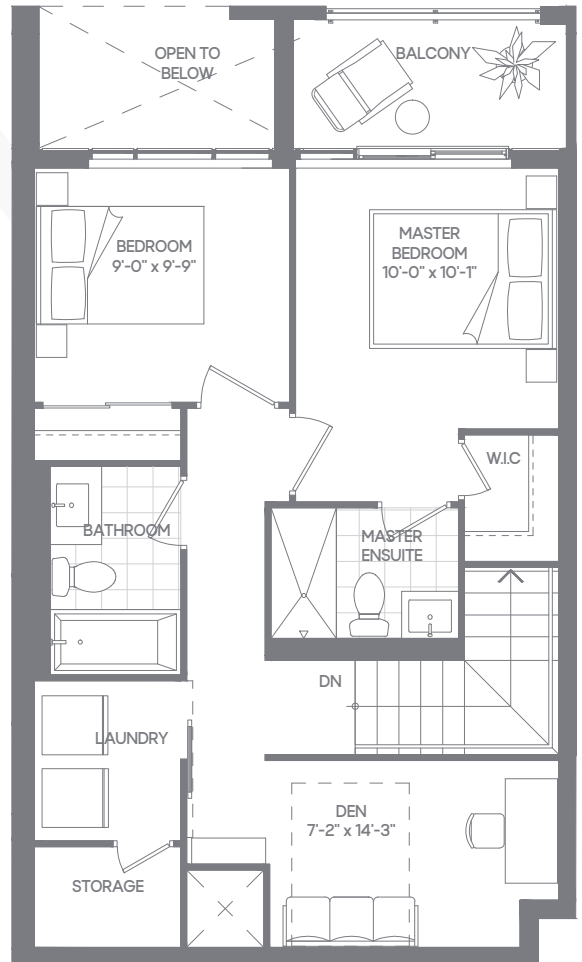


Floorplans are subject to change without notice. Actual dimensions and square footage may vary from that stated hereon. Floorplans are not to scale and may be mirror image of what is shown. Window and door locations, size and type may vary without notice. Bulkheads required for construction purposes have not been indicated. Tile patterns may vary. Any furniture and/or islands not included. Balcony, terrace and/or patio square footage is approximate, not included in the suite area and may vary depending on floor level, location and other factors, and is subject to change without notice. E. & O.E. April 2021

**TH-D**  
**THREE BEDROOM+DEN**  
 SUITE AREA: 1342 SQ.FT.  
 EXTERIOR AREA: 218 SQ.FT.  
 TOTAL AREA: 1560 SQ.FT.

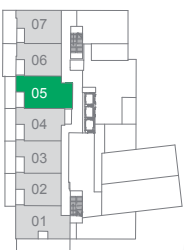


MAIN LEVEL



UPPER LEVEL

FLOOR 1



Floorplans are subject to change without notice. Actual dimensions and square footage may vary from that stated hereon. Floorplans are not to scale and may be mirror image of what is shown. Window and door locations, size and type may vary without notice. Bulkheads required for construction purposes have not been indicated. Tile patterns may vary. Any furniture and/or islands not included. Balcony, terrace and/or patio square footage is approximate, not included in the suite area and may vary depending on floor level, location and other factors, and is subject to change without notice. E. & O.E. April 2021