



THE TOWNS AT

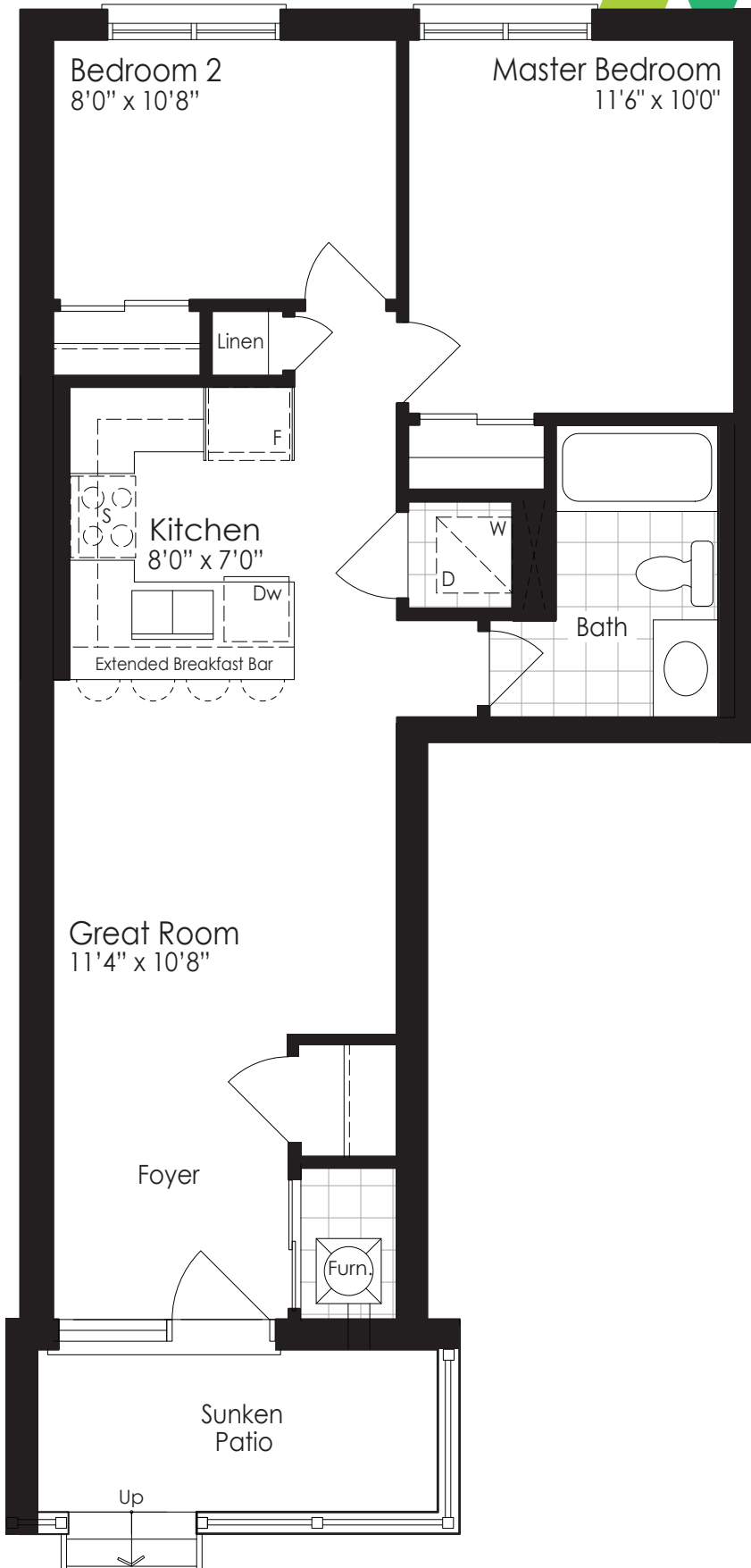
**Goreway Pines**

The  
Cedar Collection  
**LOWER LEVEL  
BUNGALOW SUITES**

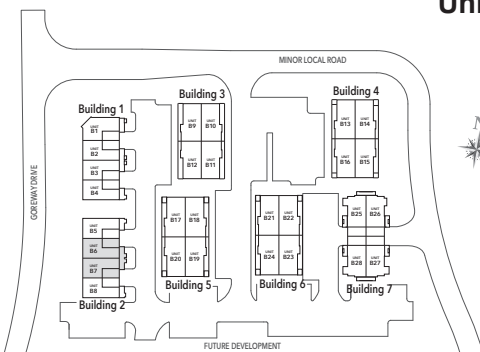
# CEDAR 1

# 722 SQ. FT.

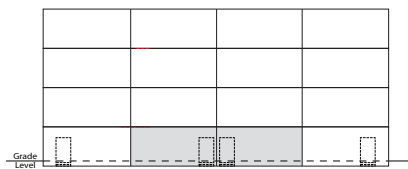
## LOWER LEVEL BUNGALOW SUITE



**LOWER LEVEL  
Unit B6 & B7**



**Lower Level Site Footprint**



**Building 2 Lower Level East Side**

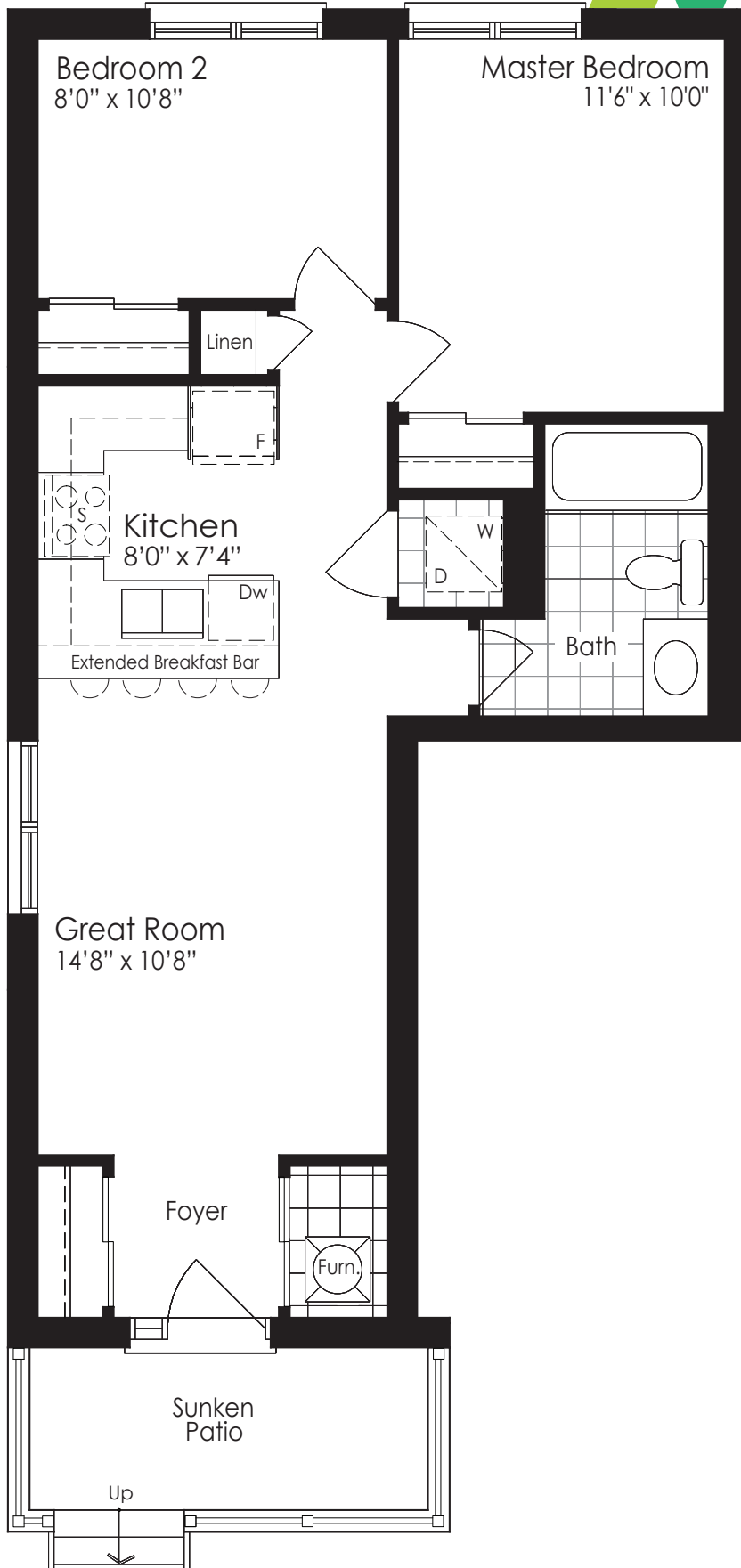


The floor plans and elevations shown are pre-construction plans and may be revised or improved as necessitated by architectural controls and the construction process. The measurements adhere to the rules and regulations of the TARION Warranty Corporation's official method for the calculation of floor area. Actual usable floor space may vary from the stated floor area. Locations of furnace, hot water tank, posts and beams may vary and are to be determined by architect and purchasers shall be deemed to accept the same. All options shown are upgrades. E. & O.E. September 2019

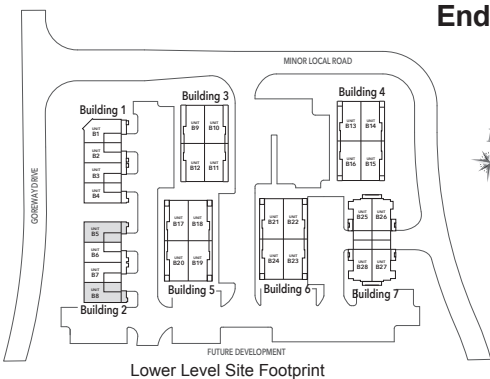
# CEDAR 2

# 738 SQ. FT.

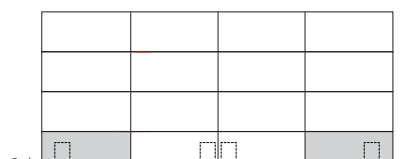
## LOWER LEVEL BUNGALOW SUITE



**LOWER LEVEL  
End Unit B5 & B8**



**Lower Level Site Footprint**



**Building 2 Lower Level East Side**

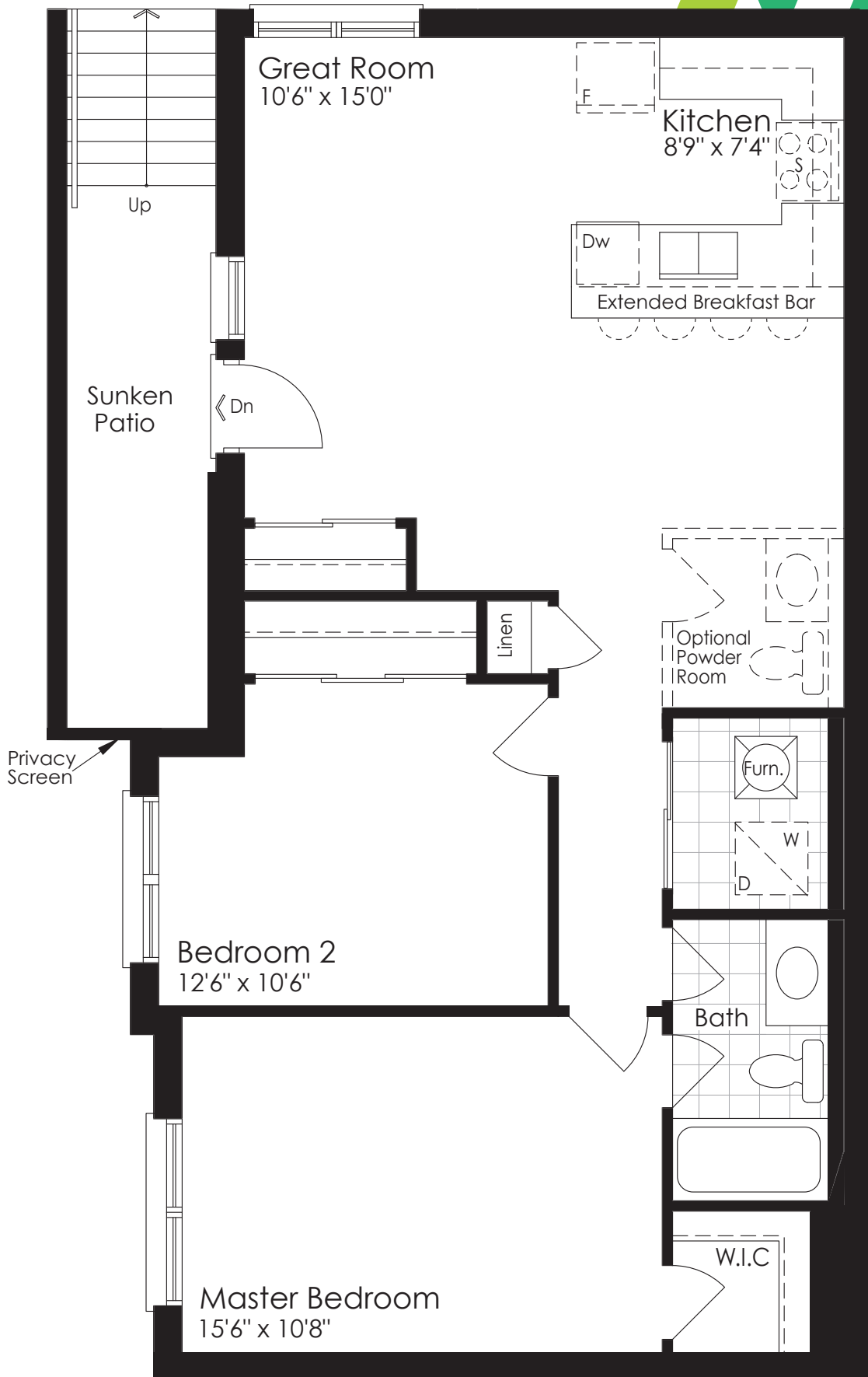


The floor plans and elevations shown are pre-construction plans and may be revised or improved as necessitated by architectural controls and the construction process. The measurements adhere to the rules and regulations of the TARION Warranty Corporation's official method for the calculation of floor area. Actual usable floor space may vary from the stated floor area. Locations of furnace, hot water tank, posts and beams may vary and are to be determined by architect and purchasers shall be deemed to accept the same. All options shown are upgrades. E. & O.E. September 2019

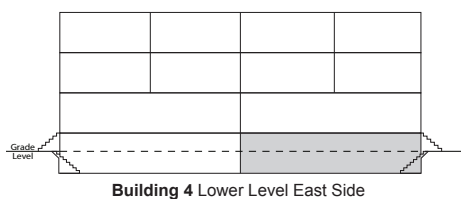
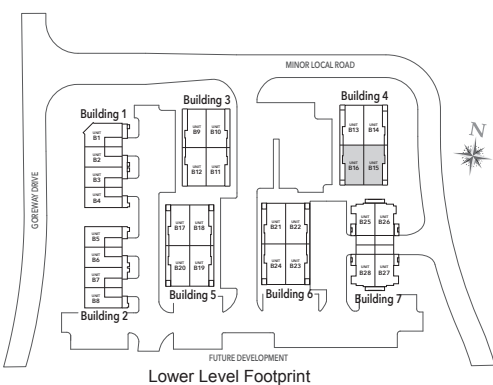
# CEDAR 5

# 960 SQ. FT.

## LOWER LEVEL BUNGALOW SUITE



**LOWER LEVEL  
Unit B15 & B16**

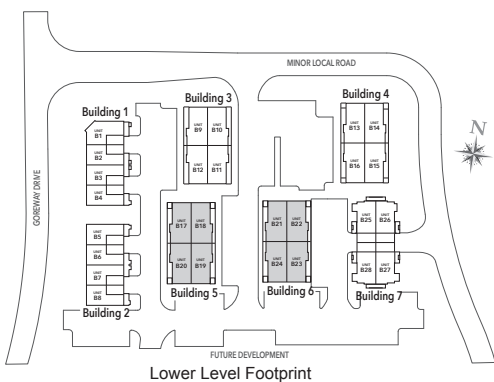
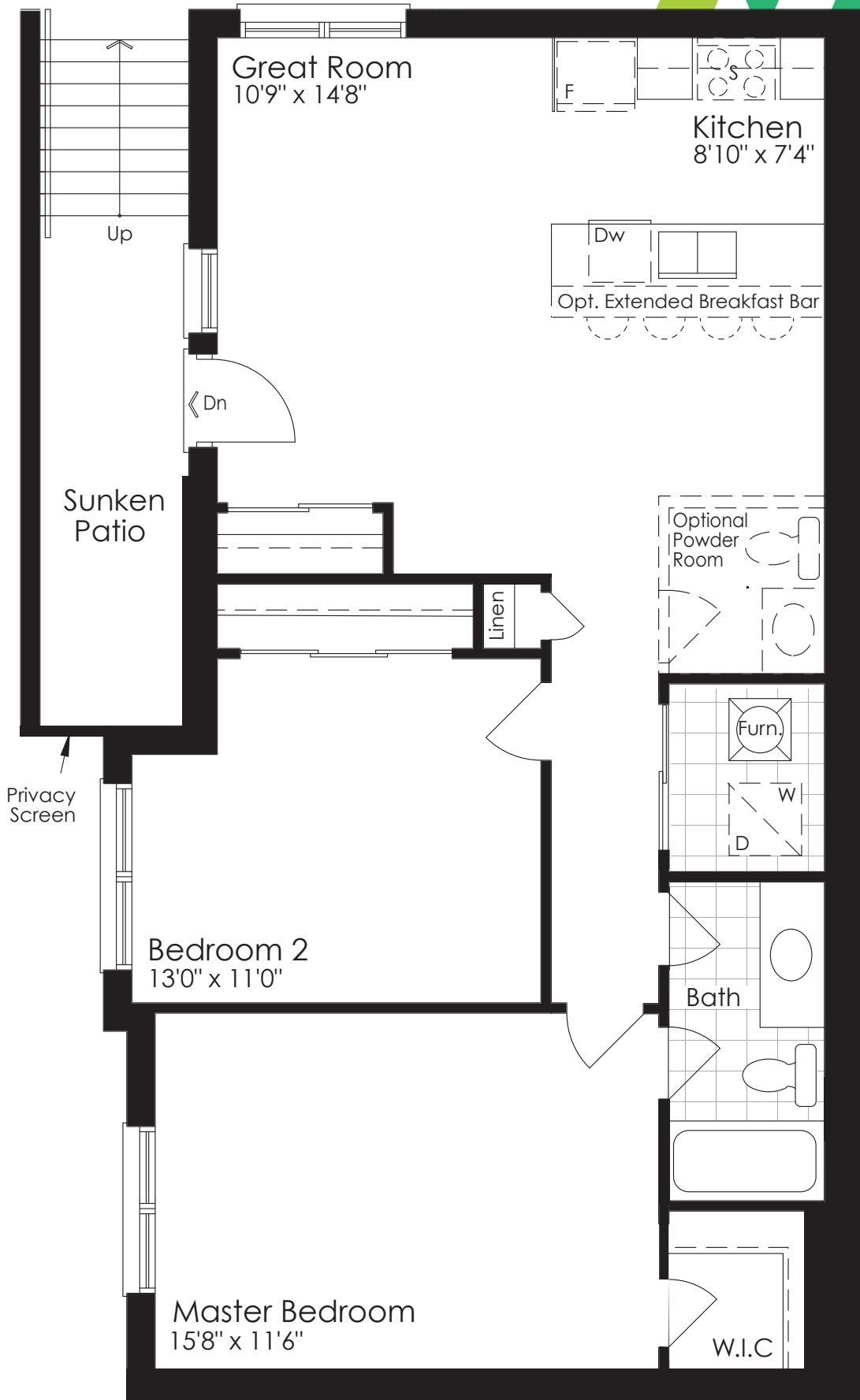


The floor plans and elevations shown are pre-construction plans and may be revised or improved as necessitated by architectural controls and the construction process. The measurements adhere to the rules and regulations of the TARION Warranty Corporation's official method for the calculation of floor area. Actual usable floor space may vary from the stated floor area. Locations of furnace, hot water tank, posts and beams may vary and are to be determined by architect and purchasers shall be deemed to accept the same. All options shown are upgrades. E. & O.E. September 2019

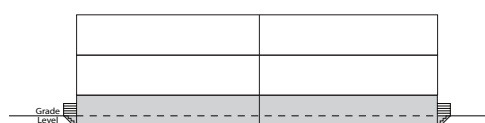
# CEDAR 6

# 1009 SQ. FT.

## LOWER LEVEL BUNGALOW SUITE



Lower Level Footprint



Building 5 & 6 Lower Level East & West View

**LOWER LEVEL**  
 Unit B17, B18, B19 & B20 (Building 5)  
 Unit B21, B22, B23 & B24 (Building 6)



The floor plans and elevations shown are pre-construction plans and may be revised or improved as necessitated by architectural controls and the construction process. The measurements adhere to the rules and regulations of the TARION Warranty Corporation's official method for the calculation of floor area. Actual usable floor space may vary from the stated floor area. Locations of furnace, hot water tank, posts and beams may vary and are to be determined by architect and purchasers shall be deemed to accept the same. All options shown are upgrades. E. & O.E. September 2019



THE TOWNS AT

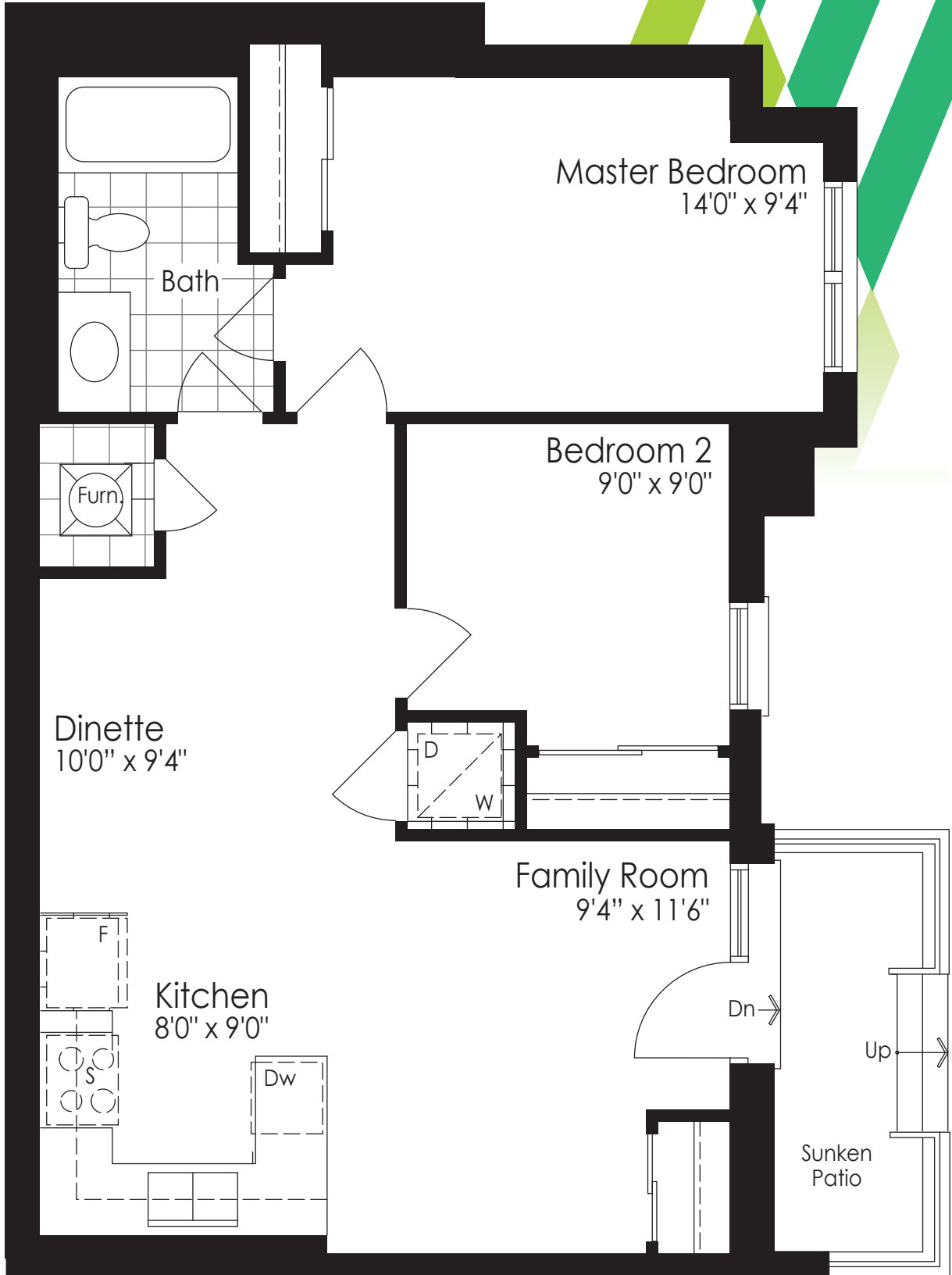
**Goreway Pines**

The  
Spruce Collection  
**BUNGALOW SUITES**

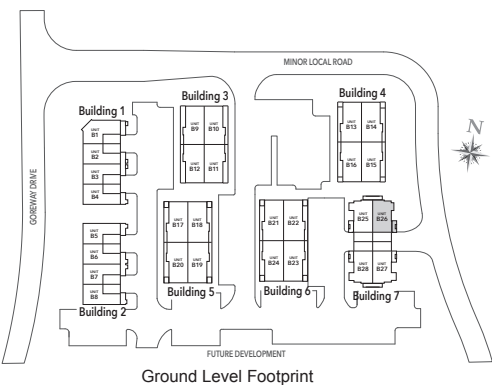
# SPRUCE 1

# 754 SQ. FT.

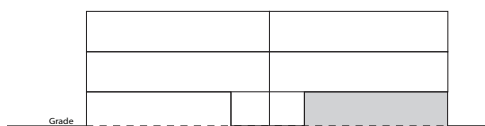
## BUNGALOW SUITE



**GROUND LEVEL**  
**Unit B26**



Ground Level Footprint



Building 7 Ground Level East Side

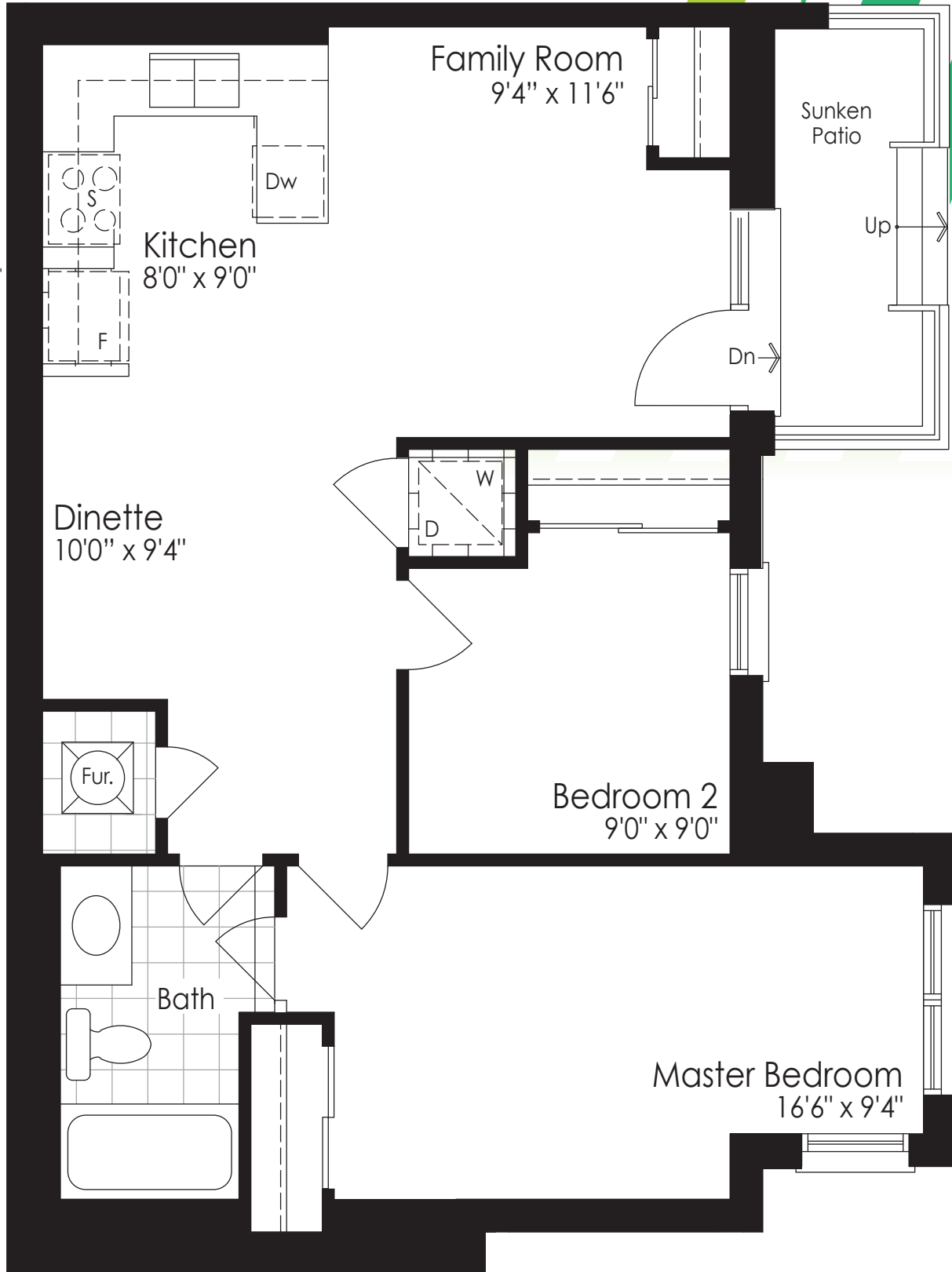


The floor plans and elevations shown are pre-construction plans and may be revised or improved as necessitated by architectural controls and the construction process. The measurements adhere to the rules and regulations of the TARION Warranty Corporation's official method for the calculation of floor area. Actual usable floor space may vary from the stated floor area. Locations of furnace, hot water tank, posts and beams may vary and are to be determined by architect and purchasers shall be deemed to accept the same. All options shown are upgrades. E. & O.E. September 2019

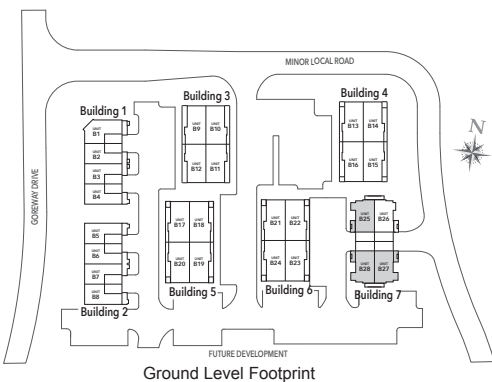
# SPRUCE 3

# 788 SQ. FT.

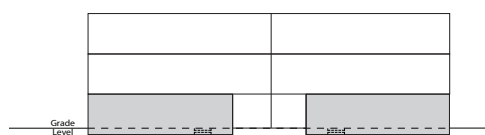
## BUNGALOW SUITE



**GROUND LEVEL**  
**Unit B25, B27 & B28**



**Ground Level Footprint**



**Building 7 Ground Level West Side**



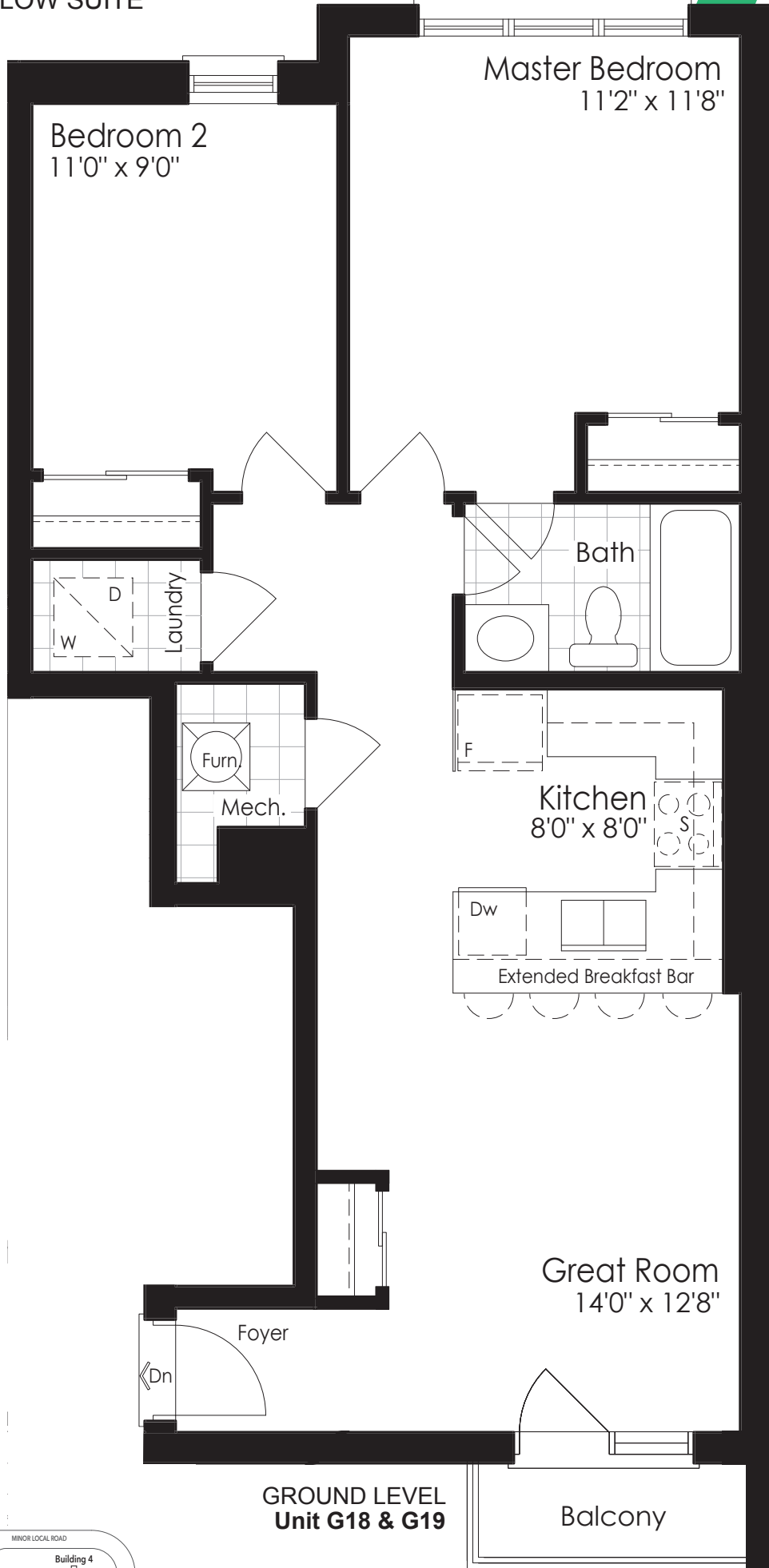
The floor plans and elevations shown are pre-construction plans and may be revised or improved as necessitated by architectural controls and the construction process. The measurements adhere to the rules and regulations of the TARION Warranty Corporation's official method for the calculation of floor area. Actual usable floor space may vary from the stated floor area. Locations of furnace, hot water tank, posts and beams may vary and are to be determined by architect and purchasers shall be deemed to accept the same. All options shown are upgrades. E. & O.E. September 2019



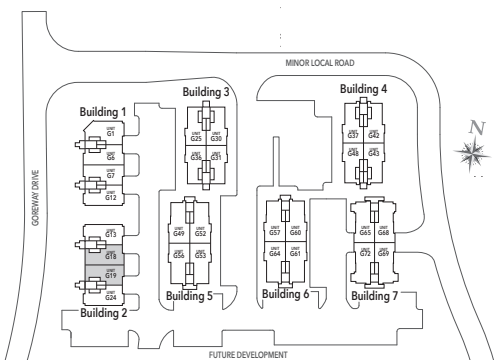
# SPRUCE 4

# 790 SQ. FT.

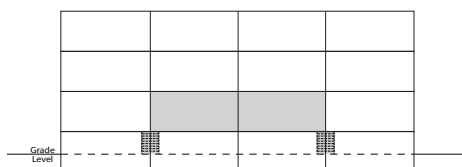
## BUNGALOW SUITE



**GROUND LEVEL  
Unit G18 & G19**



**Ground Level Footprint**



**BUILDING 2 Ground Level West Side**

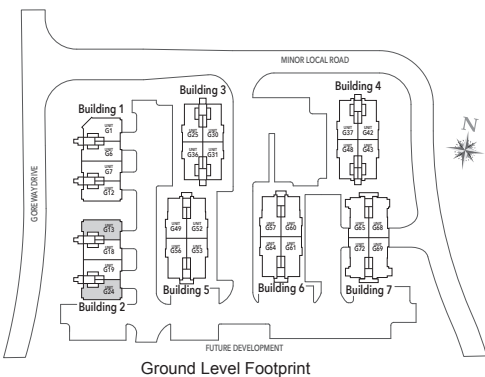
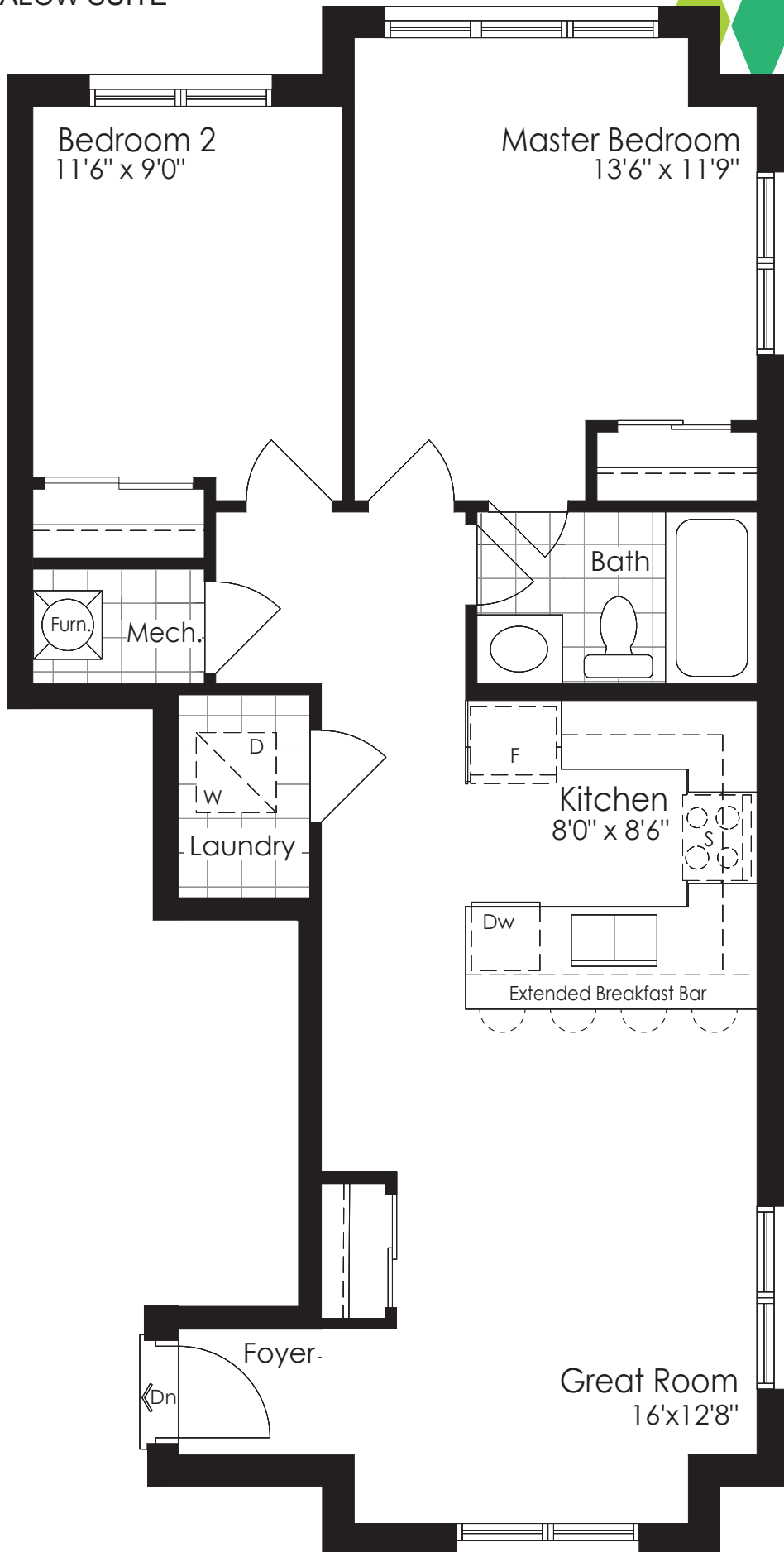


The floor plans and elevations shown are pre-construction plans and may be revised or improved as necessitated by architectural controls and the construction process. The measurements adhere to the rules and regulations of the TARION Warranty Corporation's official method for the calculation of floor area. Actual usable floor space may vary from the stated floor area. Locations of furnace, hot water tank, posts and beams may vary and are to be determined by architect and purchasers shall be deemed to accept the same. All options shown are upgrades. E. & O.E. September 2019

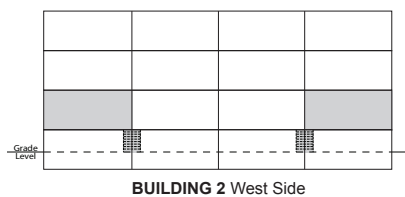
# SPRUCE 7

# 831 SQ. FT.

## BUNGALOW SUITE



**GROUND LEVEL  
Unit G13 & G24**

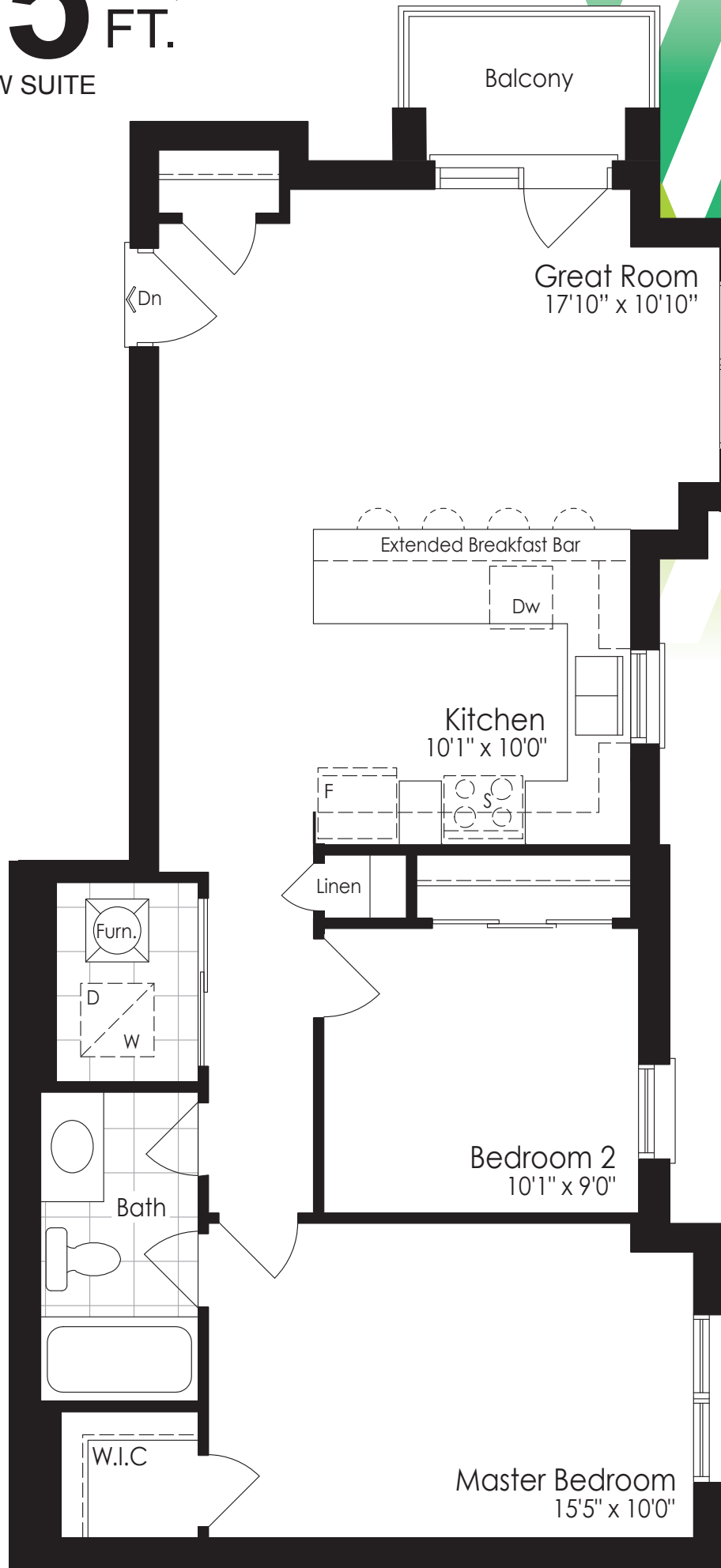


The floor plans and elevations shown are pre-construction plans and may be revised or improved as necessitated by architectural controls and the construction process. The measurements adhere to the rules and regulations of the TARION Warranty Corporation's official method for the calculation of floor area. Actual usable floor space may vary from the stated floor area. Locations of furnace, hot water tank, posts and beams may vary and are to be determined by architect and purchasers shall be deemed to accept the same. All options shown are upgrades. E. & O.E. September 2019

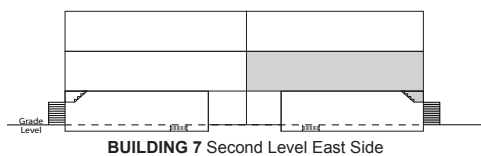
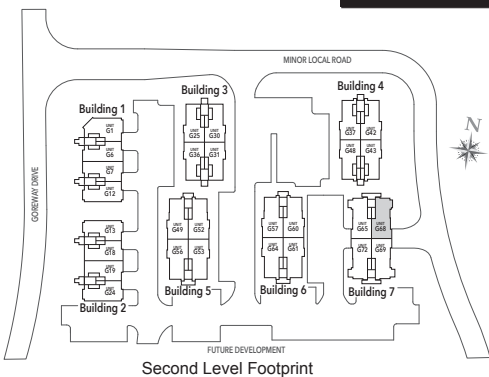
# SPRUCE 8

# 895 SQ. FT.

## BUNGALOW SUITE



**GROUND LEVEL  
Unit G68**

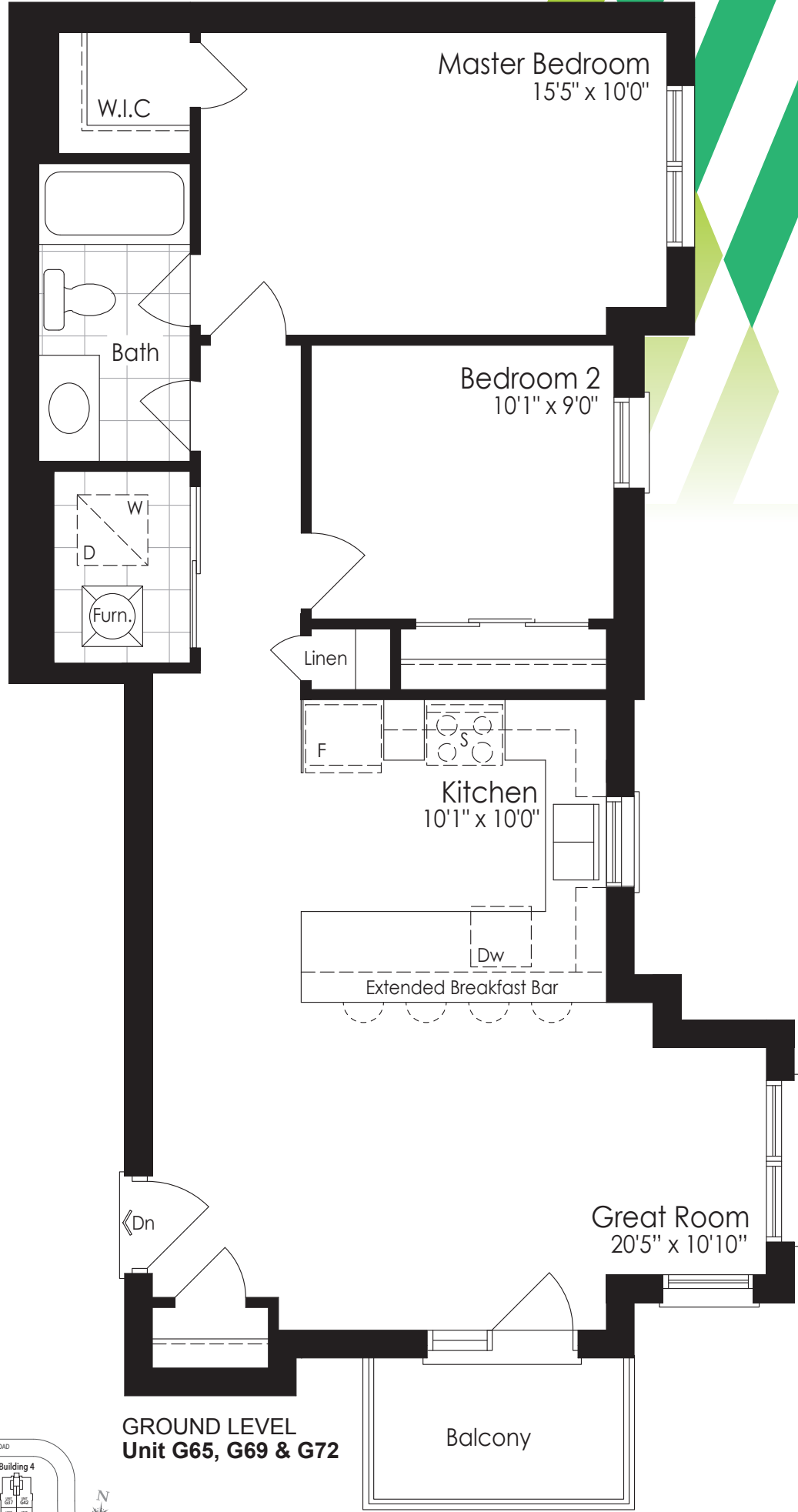


The floor plans and elevations shown are pre-construction plans and may be revised or improved as necessitated by architectural controls and the construction process. The measurements adhere to the rules and regulations of the TARION Warranty Corporation's official method for the calculation of floor area. Actual usable floor space may vary from the stated floor area. Locations of furnace, hot water tank, posts and beams may vary and are to be determined by architect and purchasers shall be deemed to accept the same. All options shown are upgrades. E. & O.E. September 2019

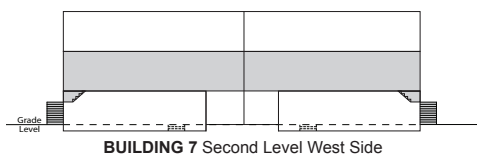
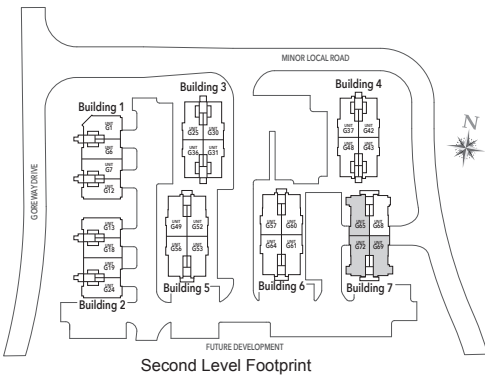
# SPRUCE 10

# 919 SQ. FT.

## BUNGALOW SUITE



**GROUND LEVEL**  
Unit G65, G69 & G72

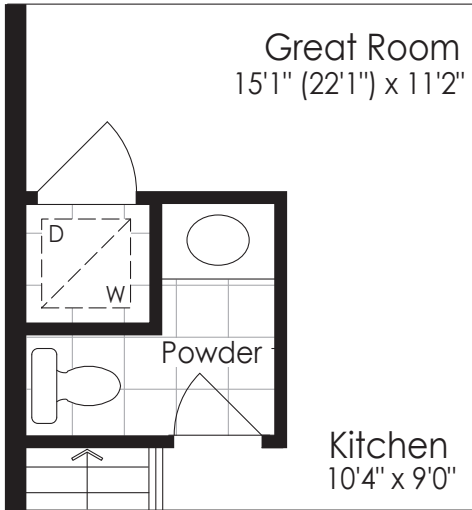


The floor plans and elevations shown are pre-construction plans and may be revised or improved as necessitated by architectural controls and the construction process. The measurements adhere to the rules and regulations of the TARION Warranty Corporation's official method for the calculation of floor area. Actual usable floor space may vary from the stated floor area. Locations of furnace, hot water tank, posts and beams may vary and are to be determined by architect and purchasers shall be deemed to accept the same. All options shown are upgrades. E. & O.E. September 2019

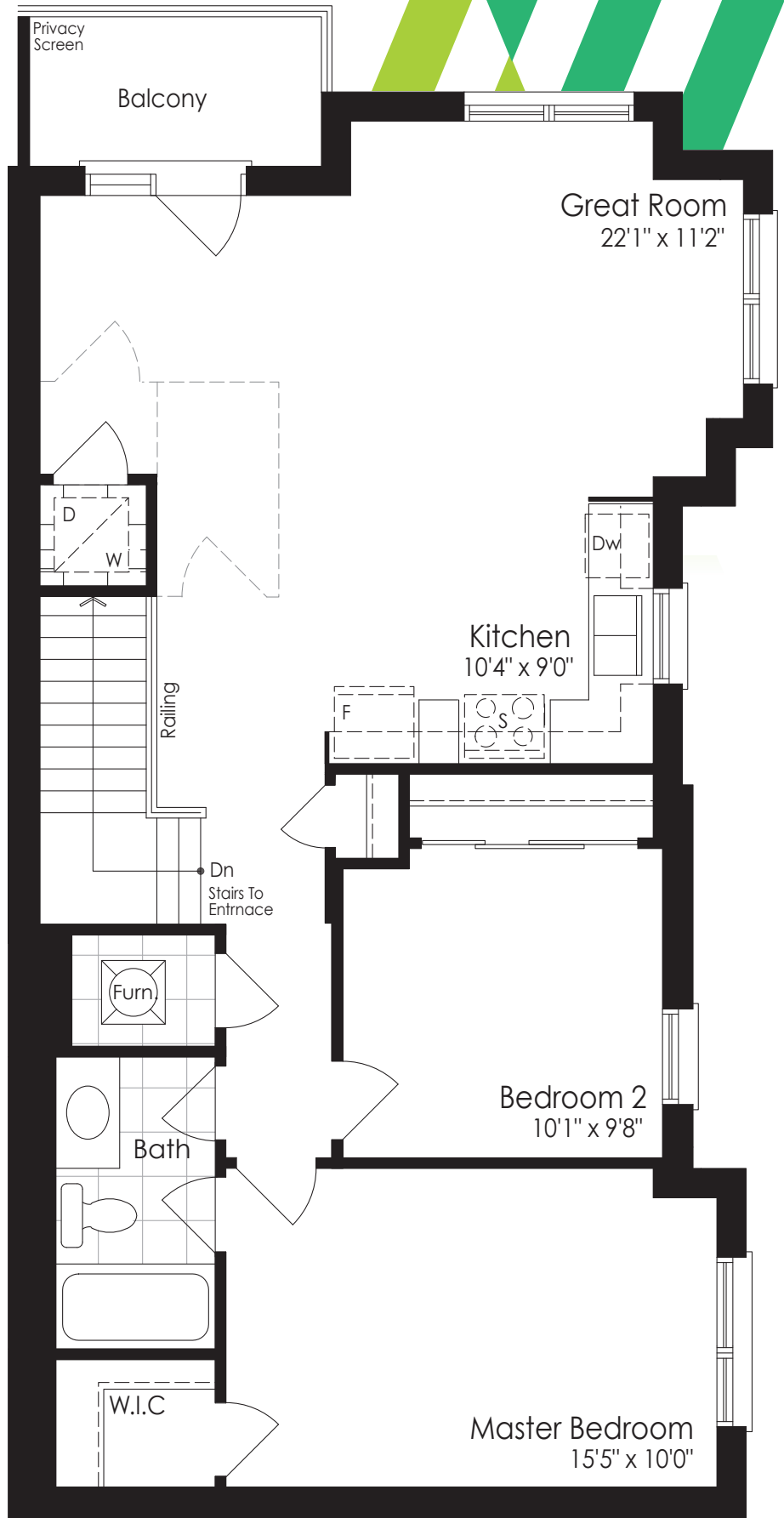
# SPRUCE 12

# 1005 SQ. FT.

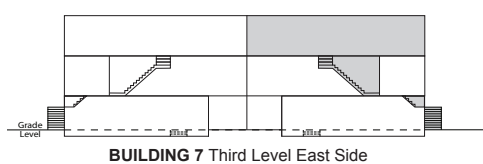
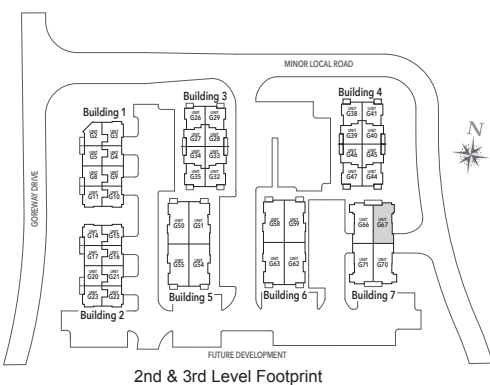
## BUNGALOW SUITE



Optional Powder



THIRD LEVEL  
Unit G67

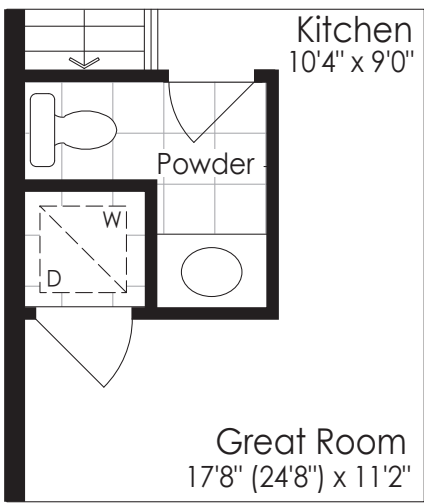
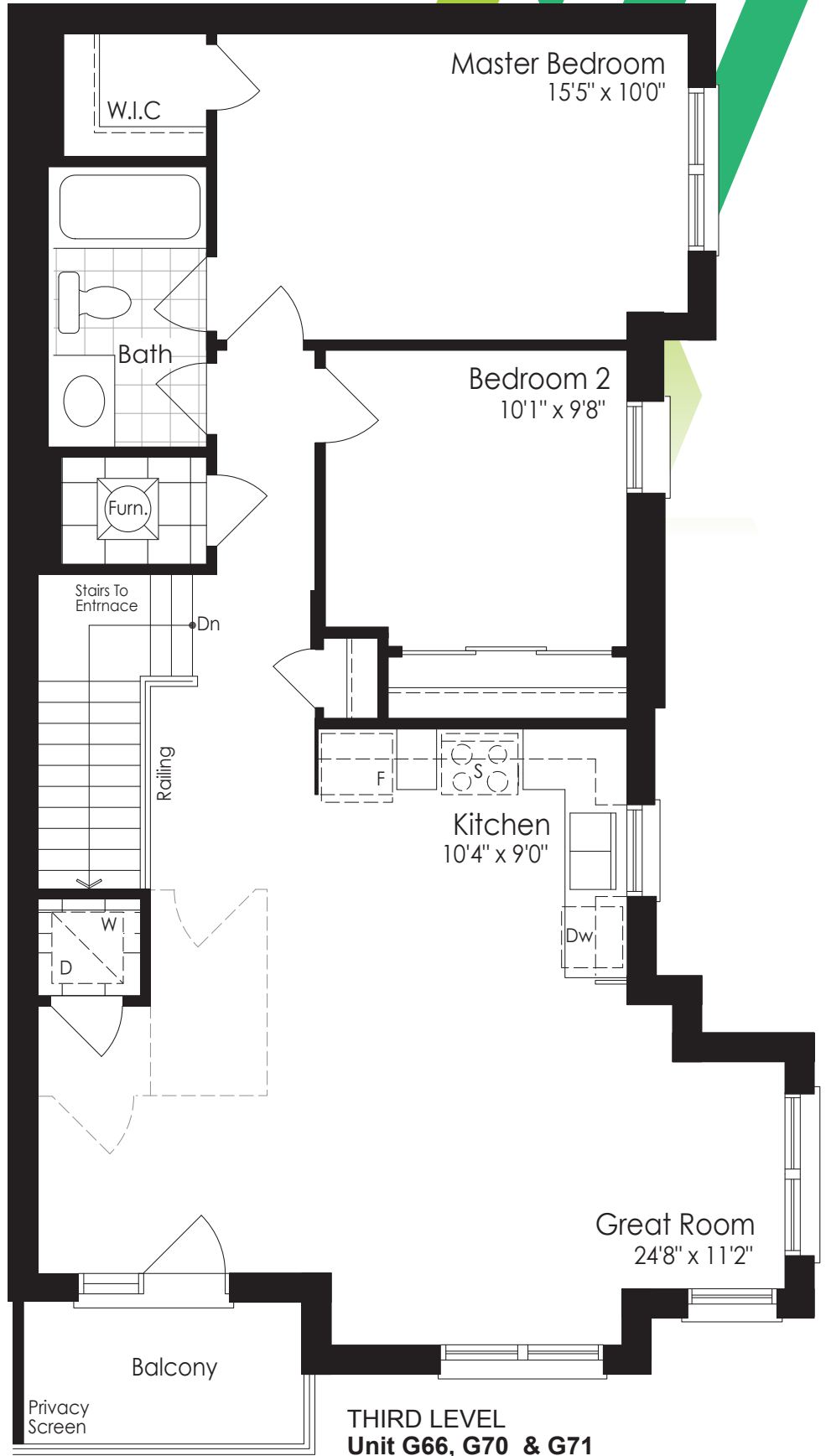


The floor plans and elevations shown are pre-construction plans and may be revised or improved as necessitated by architectural controls and the construction process. The measurements adhere to the rules and regulations of the TARION Warranty Corporation's official method for the calculation of floor area. Actual usable floor space may vary from the stated floor area. Locations of furnace, hot water tank, posts and beams may vary and are to be determined by architect and purchasers shall be deemed to accept the same. All options shown are upgrades. E. & O.E. September 2019

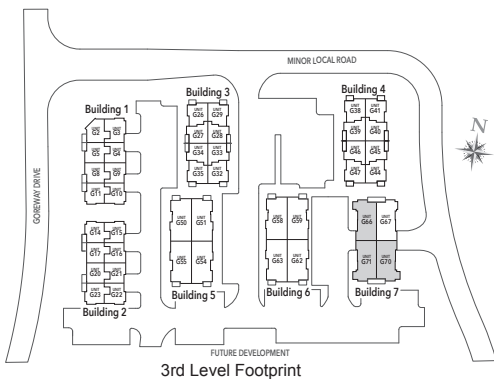
# SPRUCE 13

# 1038 SQ. FT.

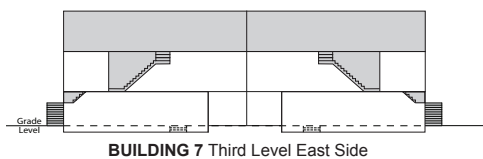
## BUNGALOW SUITE



Optional Powder



3rd Level Footprint



BUILDING 7 Third Level East Side



The floor plans and elevations shown are pre-construction plans and may be revised or improved as necessitated by architectural controls and the construction process. The measurements adhere to the rules and regulations of the TARION Warranty Corporation's official method for the calculation of floor area. Actual usable floor space may vary from the stated floor area. Locations of furnace, hot water tank, posts and beams may vary and are to be determined by architect and purchasers shall be deemed to accept the same. All options shown are upgrades. E. & O.E. September 2019



THE TOWNS AT

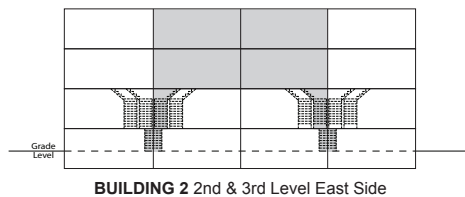
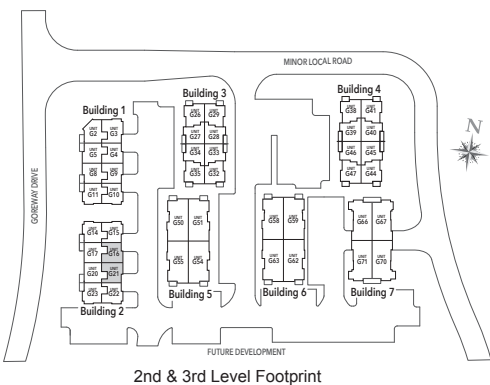
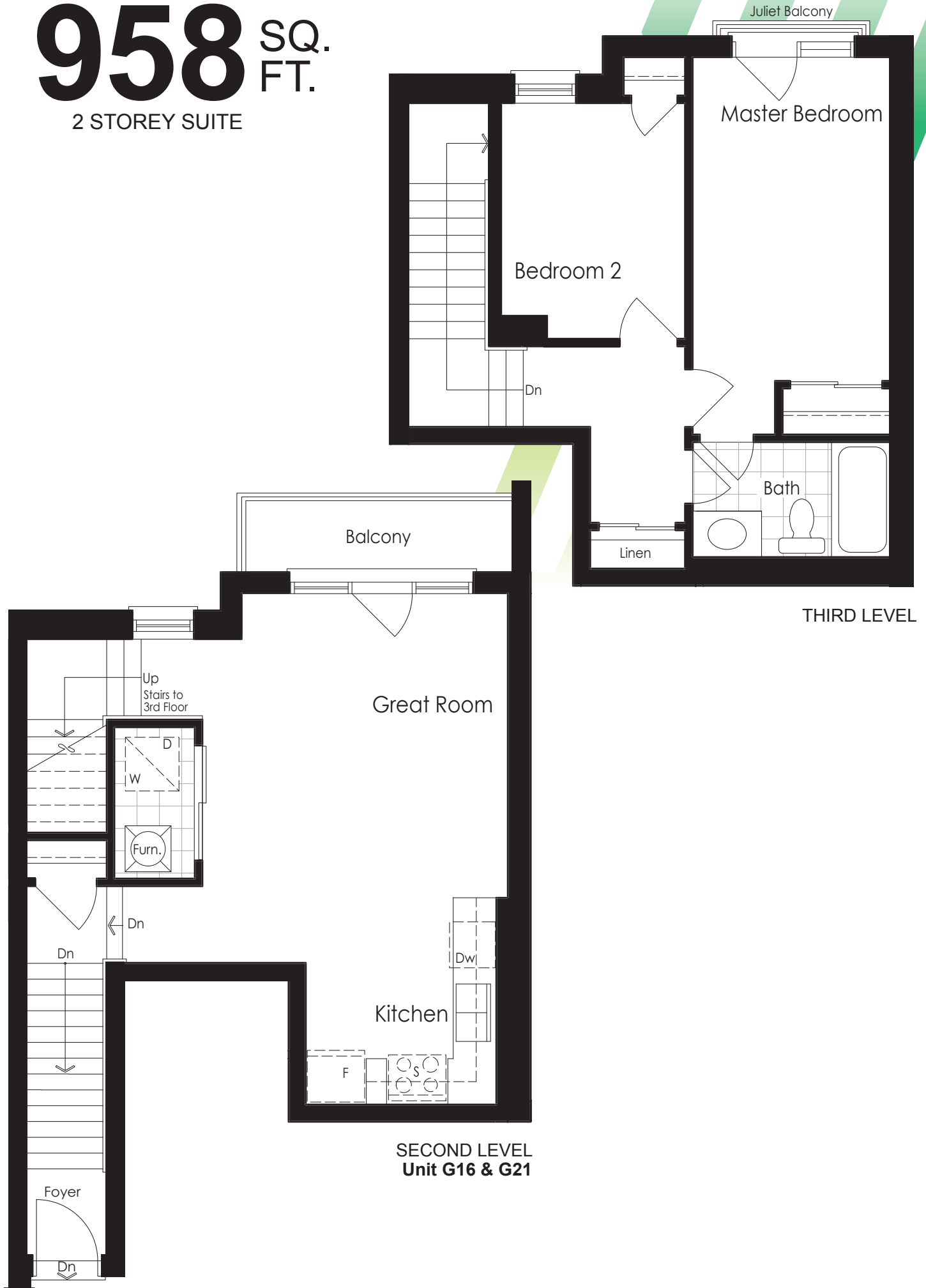
**Goreway Pines**

The  
Hemlock Collection  
**2 STOREY SUITES**

# HEMLOCK 3

# 958 SQ. FT.

## 2 STOREY SUITE



The floor plans and elevations shown are pre-construction plans and may be revised or improved as necessitated by architectural controls and the construction process. The measurements adhere to the rules and regulations of the TARION Warranty Corporation's official method for the calculation of floor area. Actual usable floor space may vary from the stated floor area. Locations of furnace, hot water tank, posts and beams may vary and are to be determined by architect and purchasers shall be deemed to accept the same. All options shown are upgrades. E. & O.E. September 2019



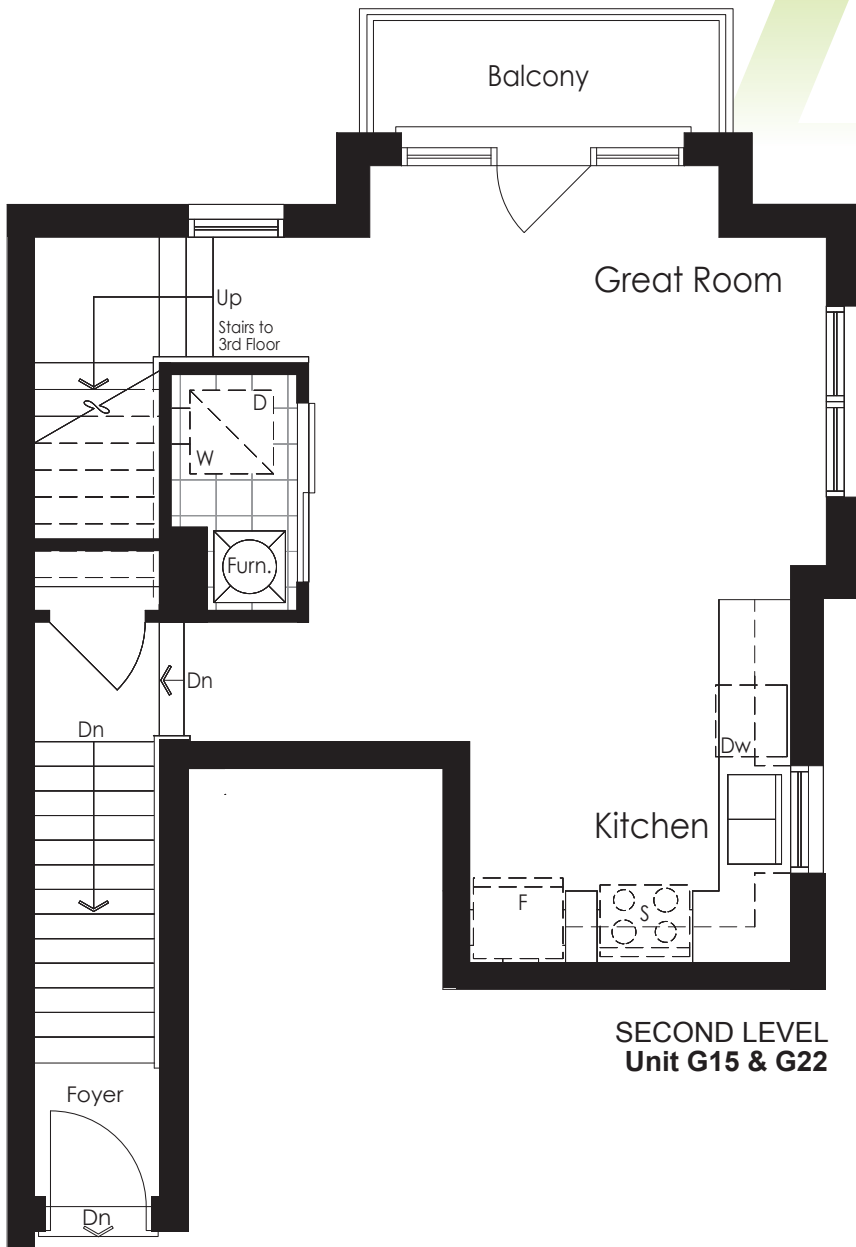
# HEMLOCK 4

# 931 SQ. FT.

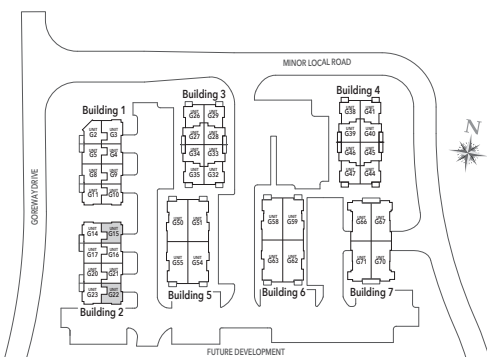
2 STOREY SUITE



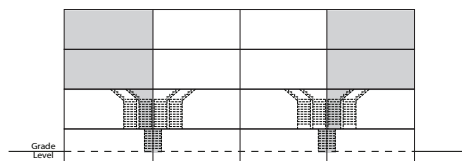
THIRD LEVEL



SECOND LEVEL  
Unit G15 & G22



2nd & 3rd Level Footprint



BUILDING 2 2nd & 3rd Level East Side



The floor plans and elevations shown are pre-construction plans and may be revised or improved as necessitated by architectural controls and the construction process. The measurements adhere to the rules and regulations of the TARION Warranty Corporation's official method for the calculation of floor area. Actual usable floor space may vary from the stated floor area. Locations of furnace, hot water tank, posts and beams may vary and are to be determined by architect and purchasers shall be deemed to accept the same. All options shown are upgrades. E. & O.E. September 2019

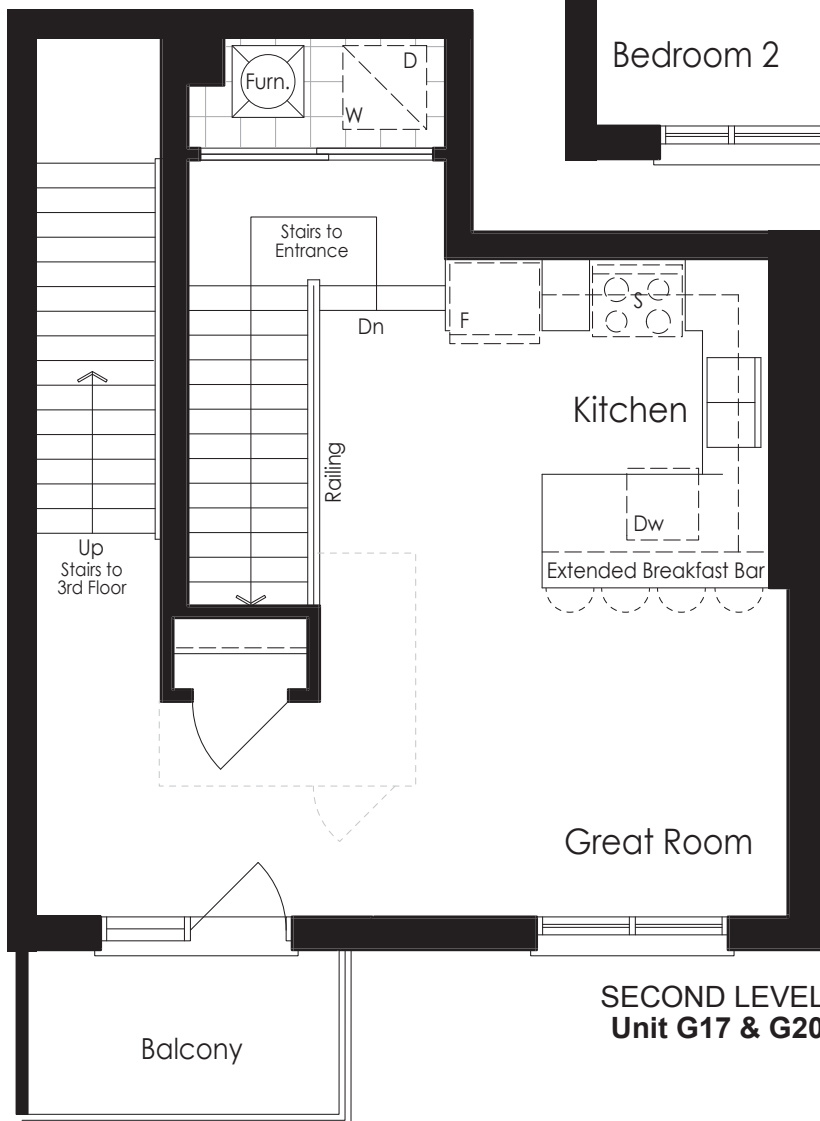
# HEMLOCK 6

# 1025 SQ. FT.

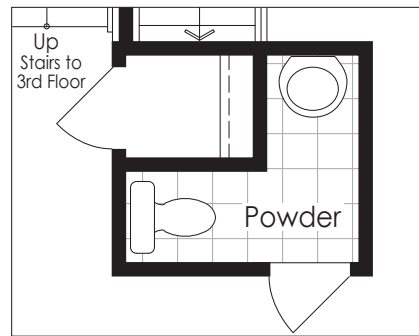
2 STOREY SUITE



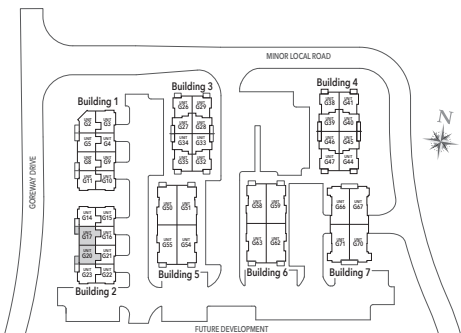
THIRD LEVEL



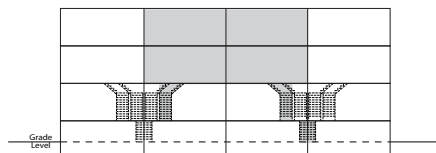
SECOND LEVEL  
Unit G17 & G20



Optional Powder



2nd & 3rd Level Footprint



BUILDING 2 2nd & 3rd Level West Side

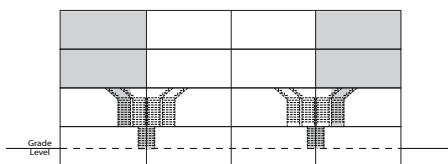
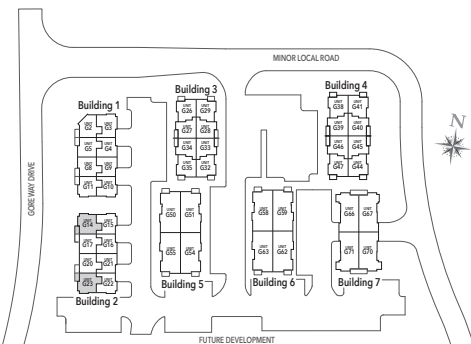
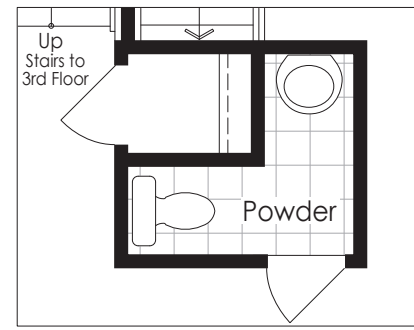
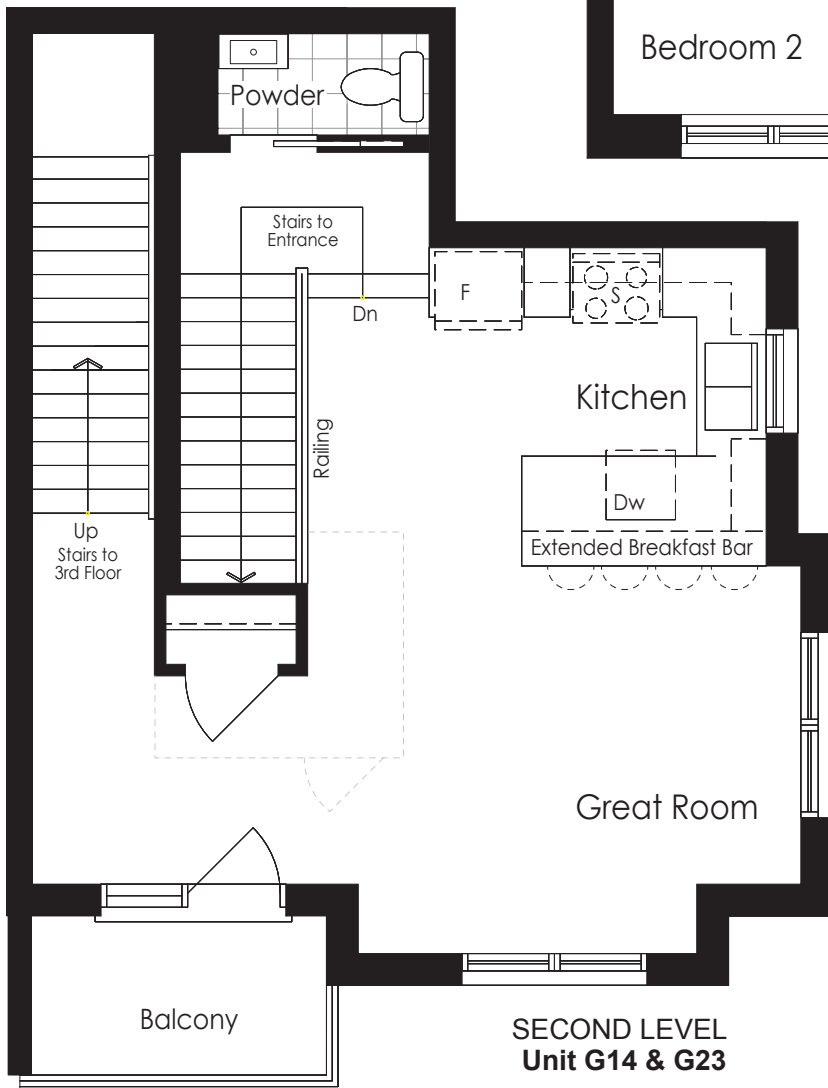


The floor plans and elevations shown are pre-construction plans and may be revised or improved as necessitated by architectural controls and the construction process. The measurements adhere to the rules and regulations of the TARION Warranty Corporation's official method for the calculation of floor area. Actual usable floor space may vary from the stated floor area. Locations of furnace, hot water tank, posts and beams may vary and are to be determined by architect and purchasers shall be deemed to accept the same. All options shown are upgrades. E. & O.E. September 2019

# HEMLOCK 9

# 1065 SQ. FT.

2 STOREY SUITE



The floor plans and elevations shown are pre-construction plans and may be revised or improved as necessitated by architectural controls and the construction process. The measurements adhere to the rules and regulations of the TARION Warranty Corporation's official method for the calculation of floor area. Actual usable floor space may vary from the stated floor area. Locations of furnace, hot water tank, posts and beams may vary and are to be determined by architect and purchasers shall be deemed to accept the same. All options shown are upgrades. E. & O.E. September 2019