



The Crimson 60' Collection

# *The Fitzgerald*

A 4,559 SQ.FT. B 4,555 SQ.FT.  
Includes 58 SQ.FT. Open Area and 118 SQ.FT. Fin. Lower Foyer  
4 or 5 Bedroom



ELEVATION B



ELEVATION A

# McMICHAEL ESTATES

EXCEPTIONALLY FINE LIVING  
IN KLEINBURG

[McMichaelEstates.ca](http://McMichaelEstates.ca)

TREASURE HILL

# The Fitzgerald

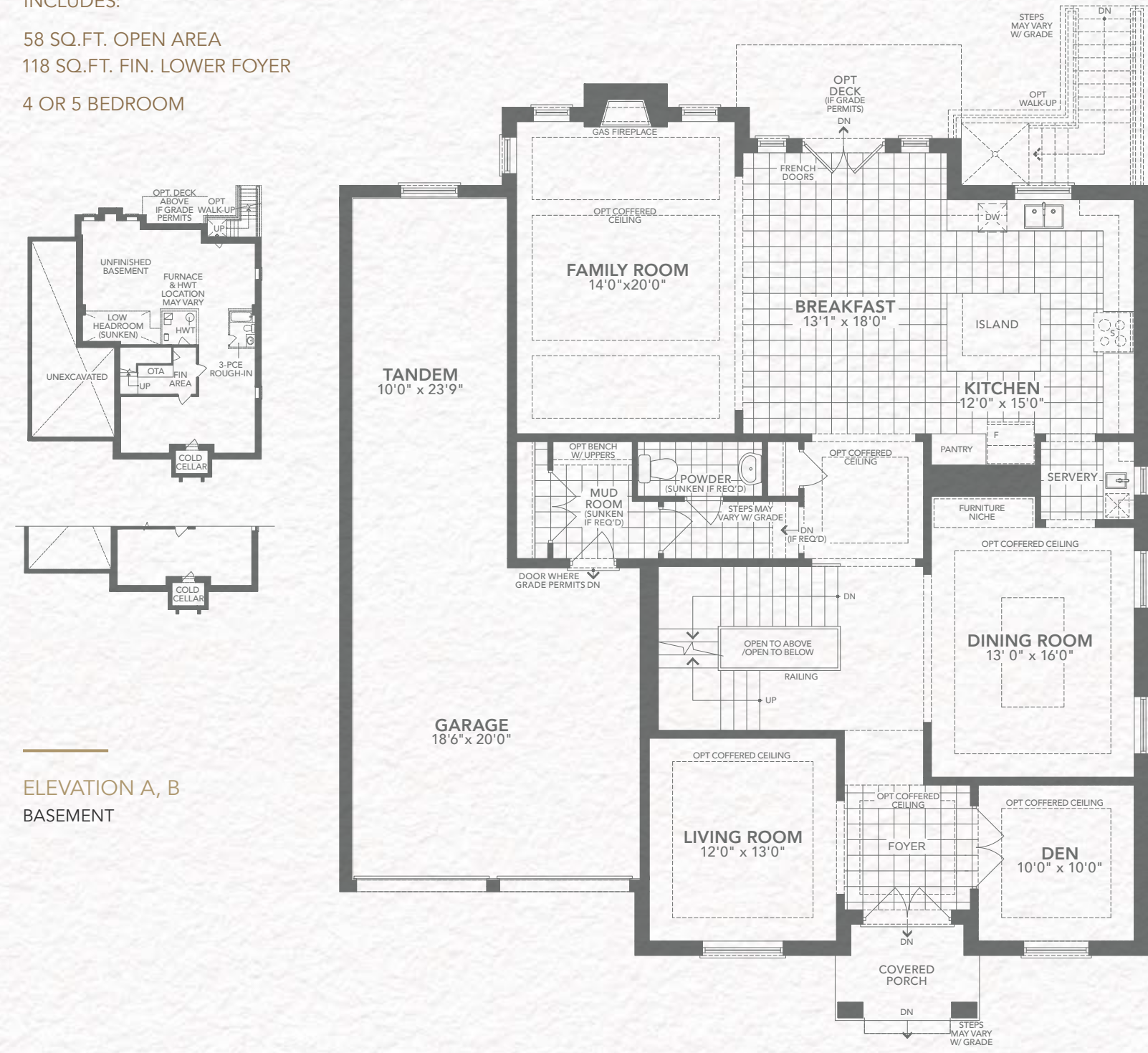
ELEVATION A | MAIN FLOOR

A 4,559 SQ.FT.  
B 4,555 SQ.FT.

INCLUDES:

58 SQ.FT. OPEN AREA  
118 SQ.FT. FIN. LOWER FOYER

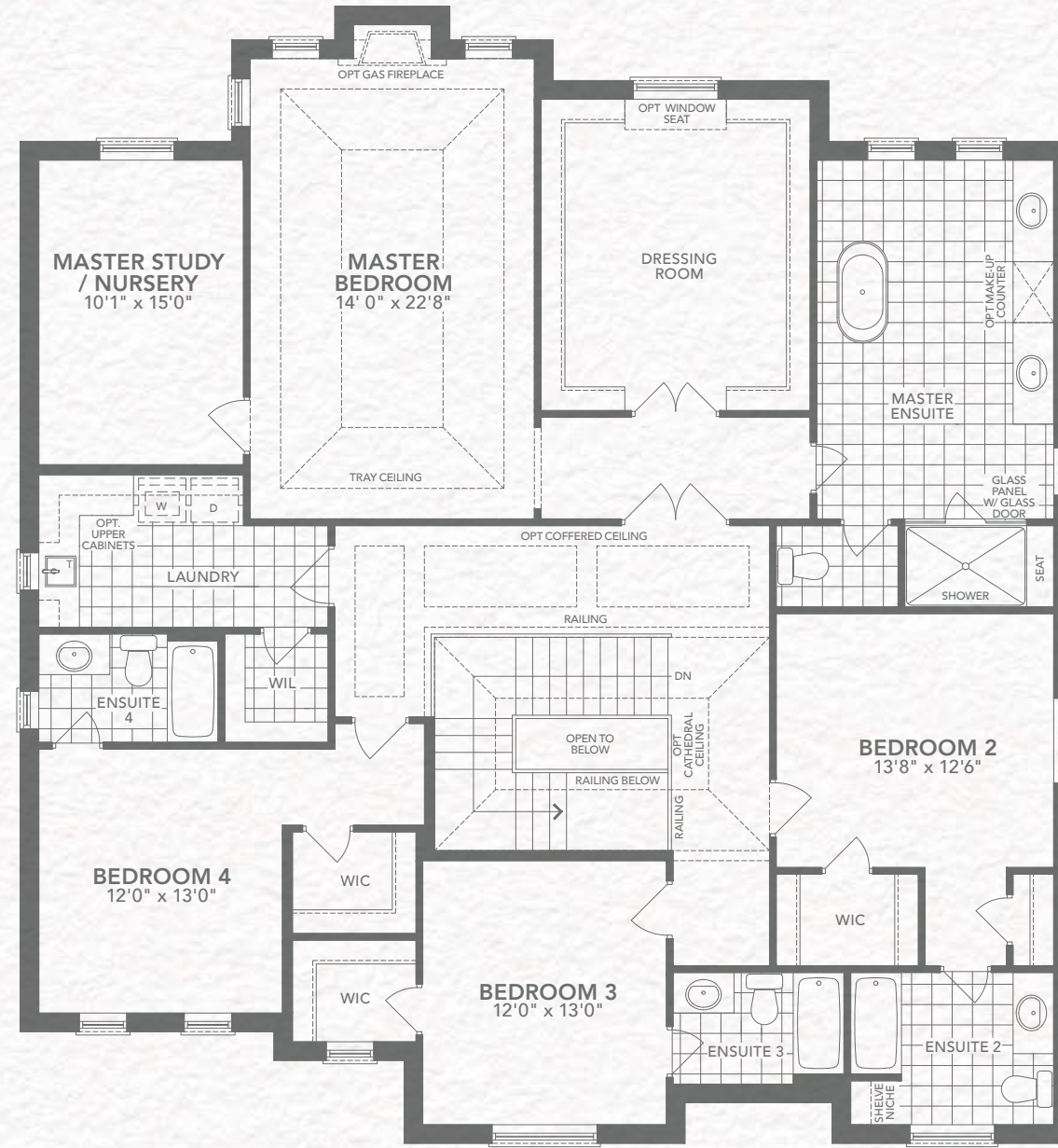
4 OR 5 BEDROOM



ELEVATION A, B  
BASEMENT



ELEVATION A | SECOND FLOOR | 4 BEDROOM



ELEVATION B



ELEVATION A | SECOND FLOOR | 5 BEDROOM



ELEVATION B



All dimensions are approximate. Information subject to change without notice. The square footage is calculated from the outside dimension of the building on the first and second floor and includes the finished area of the basement if applicable. Garages, attics and unfinished area in the basement are not included in calculations. Basement columns, water heater and furnace are not shown and will be placed based on builder's requirements. Number of steps and railings provided may vary due to grade. Windows vary as per elevation. Actual useable floor space may vary from the stated floor area. Renderings are artist's concept. 60-1. E.&O.E. - D.O.P. 18/02/2021.