

19 FT.
BLOCK N • F



MADELEINE
ELEV. A • 1343 SQ.FT.
ROBINSON
ELEV. A • 1275 SQ.FT.
HEWSON
ELEV. A • 1276 SQ.FT.
ROBINSON
ELEV. A • 1275 SQ.FT.
MADELEINE
ELEV. A • 1343 SQ.FT.

19 FT.
BLOCK O • Q



MADELEINE
ELEV. A • 1343 SQ.FT.
HEWSON
ELEV. A • 1276 SQ.FT.
ROBINSON
ELEV. A • 1275 SQ.FT.
ROBINSON
ELEV. A • 1275 SQ.FT.
HEWSON
ELEV. A • 1276 SQ.FT.
MADELEINE
ELEV. A • 1343 SQ.FT.

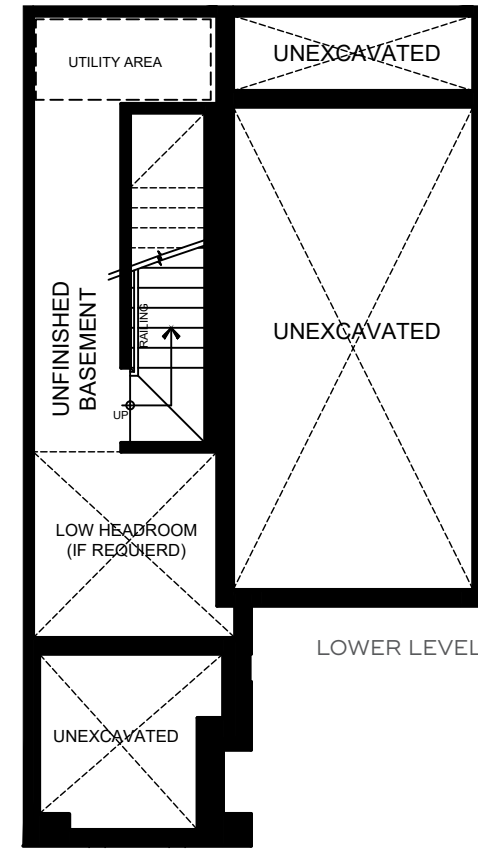
19 FT.
BLOCK P



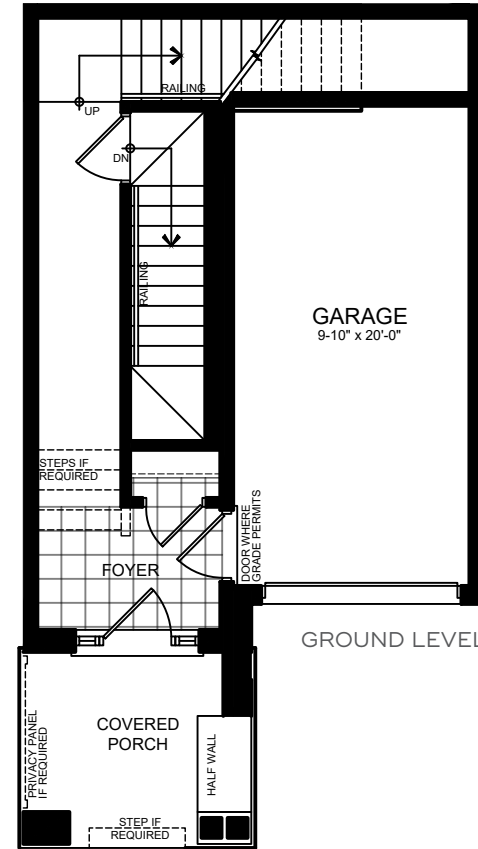
MADELEINE
ELEV. A • 1343 SQ.FT.
ROBINSON
ELEV. A • 1275 SQ.FT.
HEWSON
ELEV. A • 1276 SQ.FT.
MADELEINE
ELEV. A • 1343 SQ.FT.

ROBINSON

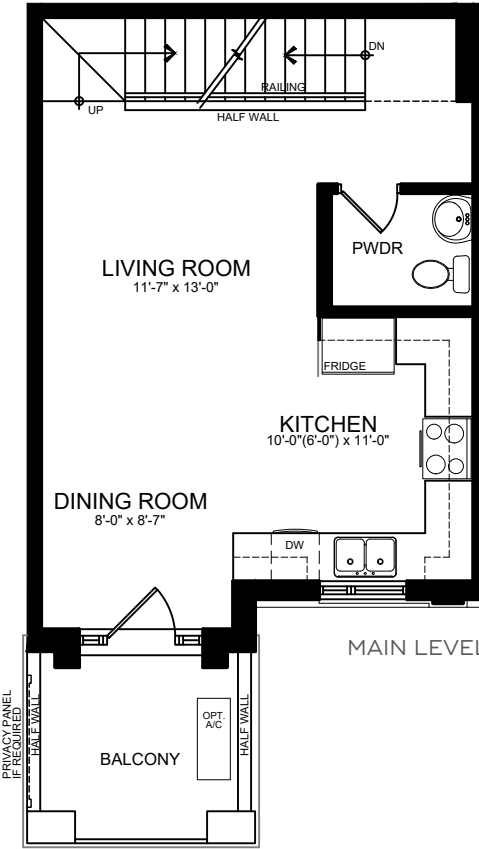
3 STOREY INTERIOR UNIT | 19' BACK TO BACK
ELEVATION A: 1275 SQ.FT.



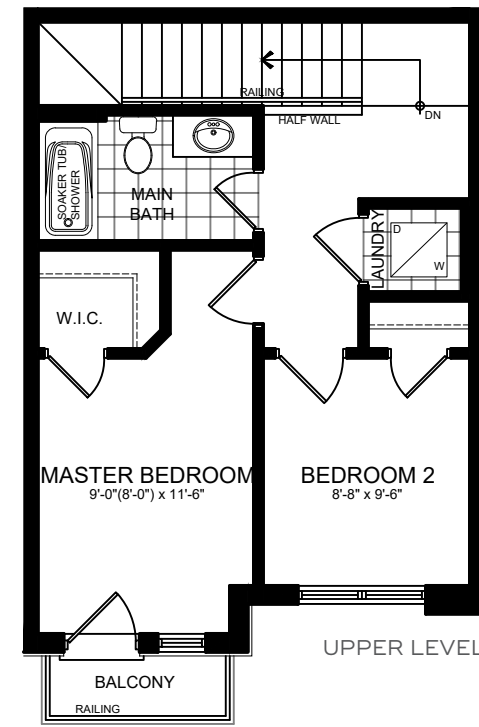
ELEV. A



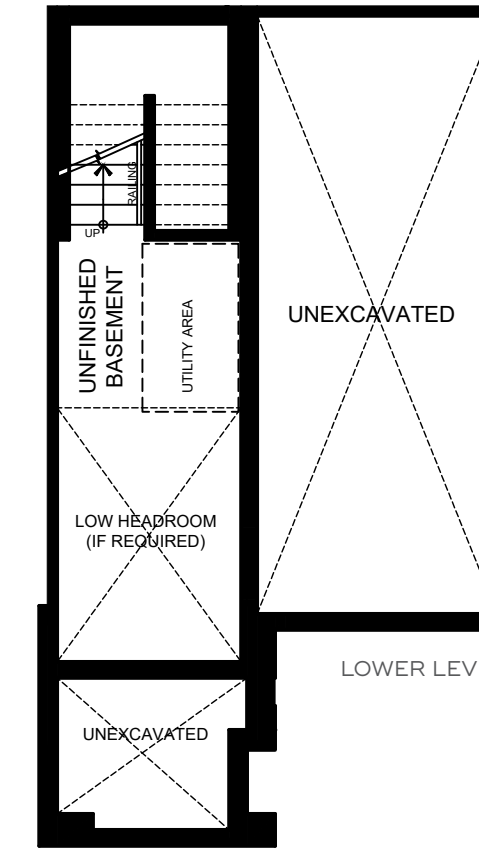
ELEV. A



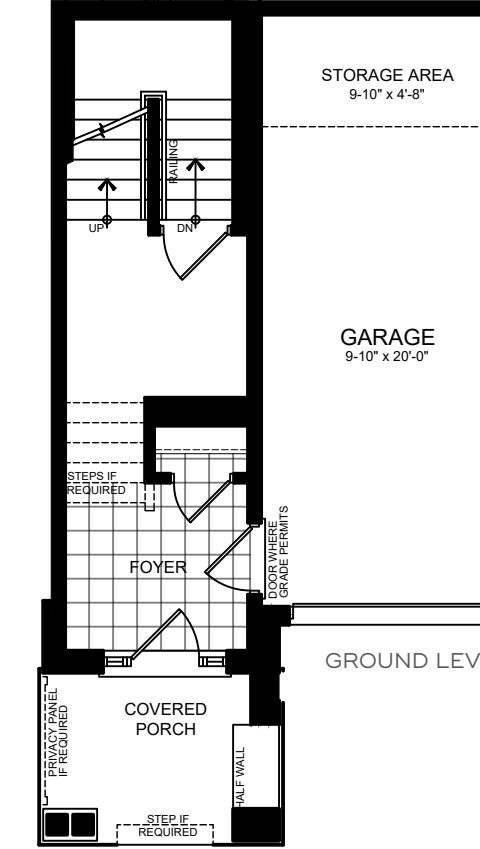
ELEV. A



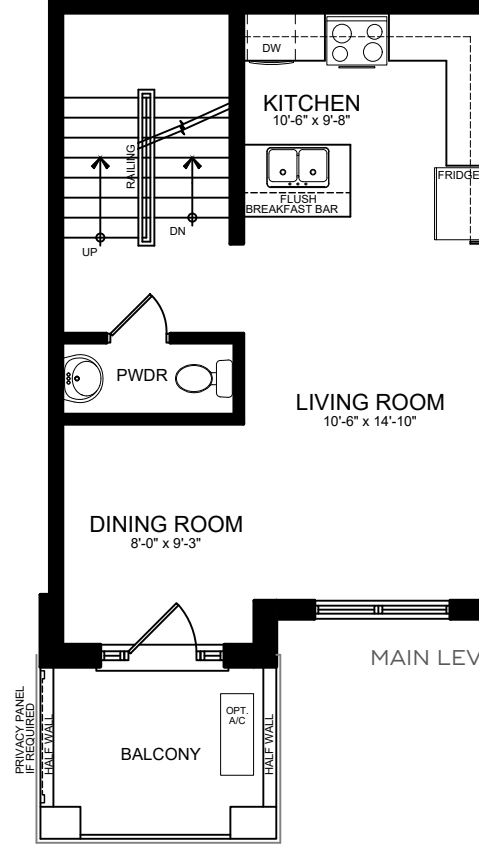
ELEV. A



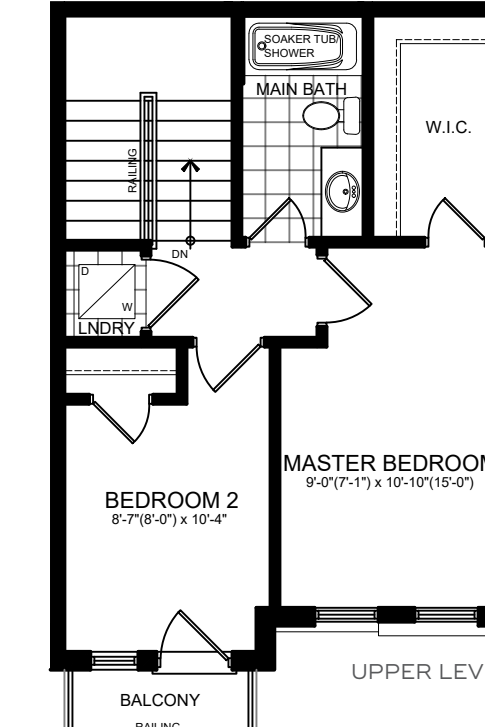
ELEV. A



ELEV. A



ELEV. A



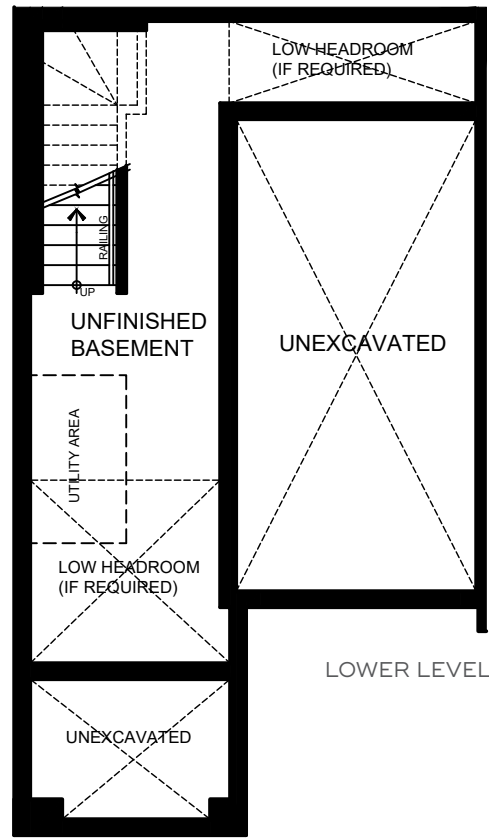
ELEV. A

HEWSON

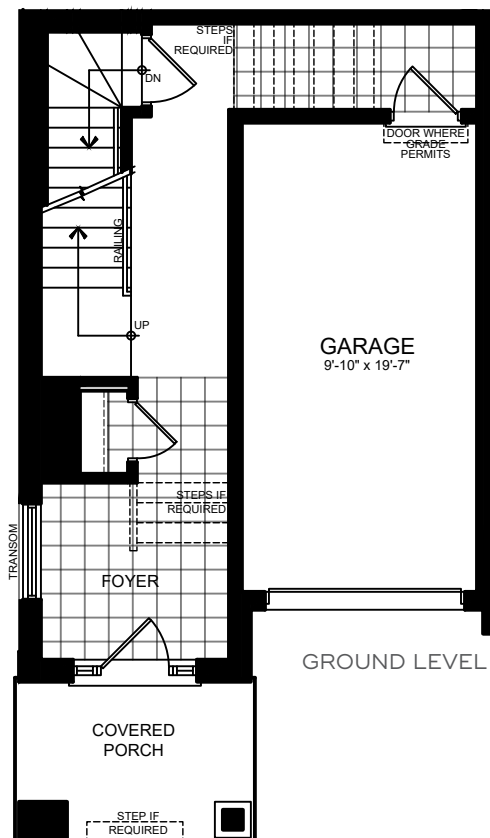
3 STOREY INTERIOR UNIT | 19' BACK TO BACK
ELEVATION A: 1276 SQ.FT.

MADELEINE

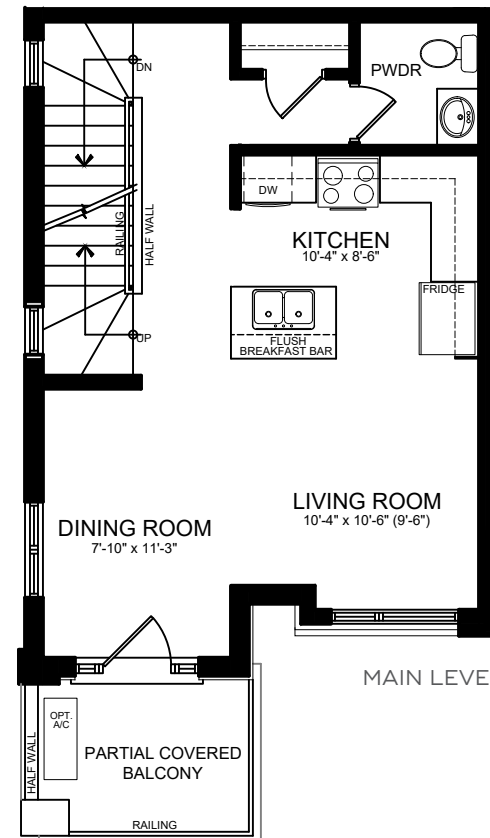
3 STOREY END UNIT | 19' BACK TO BACK
ELEVATION A: 1343 SQ.FT.



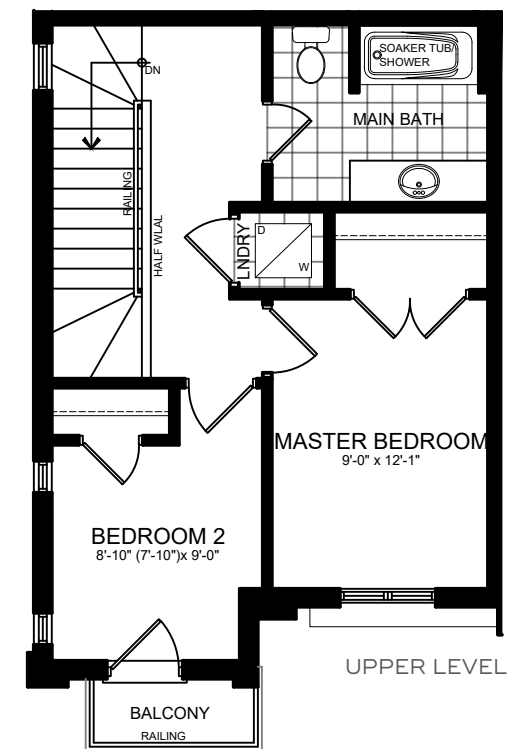
ELEV. A



ELEV. A



ELEV. A



ELEV. A

Illustrations are artist's concept. All dimensions are approximate. Specifications, terms and conditions are subject to change without notice. Floor plans and room dimensions apply to elevation A of this model type and may vary according to elevation. Plan may be built with mirror image. Location of furnace, hot water tank, support posts and beams are determined by the HVAC designer or architect and may result in drywall boxes on walls and ceilings that are not shown. The size and location of the utility area are approximate. The number of steps at front and rear may vary depending on grading. E. & O. E. • SWT-510

16 FT.
BLOCK G



16 FT.
BLOCK I



16 FT.
BLOCK H • M



16 FT.
BLOCK J • K





DUNSDON
ELEV. A • 1452 SQ.FT.

SHELLARD
ELEV. A • 1400 SQ.FT.

SHELLARD
ELEV. B • 1400 SQ.FT.

SHELLARD
ELEV. C • 1408 SQ.FT.

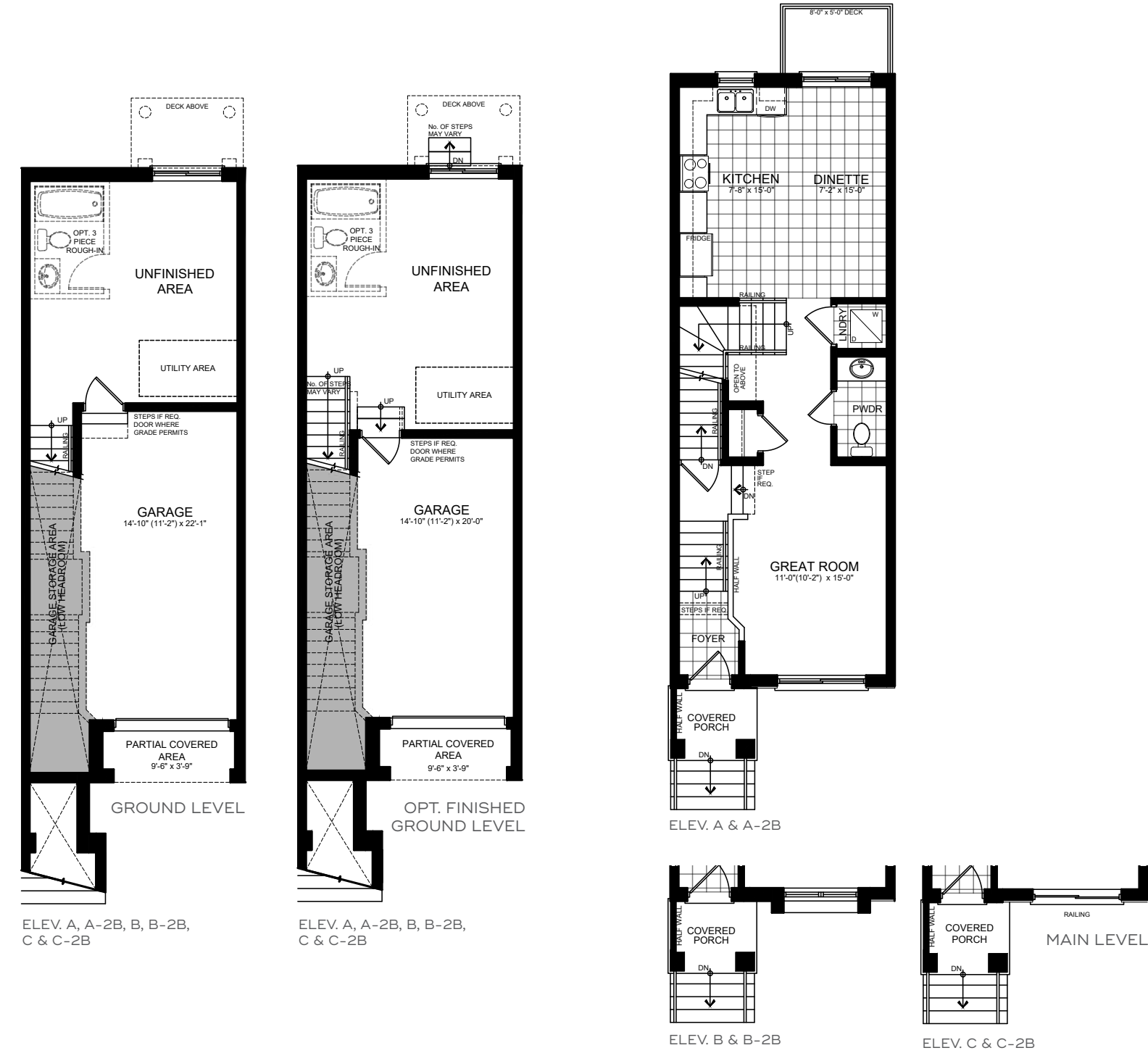
SHELLARD
ELEV. C • 1408 SQ.FT.

SHELLARD
ELEV. A • 1400 SQ.FT.

DUNSDON
ELEV. A • 1452 SQ.FT.

SHELLARD

3 STOREY INTERIOR UNIT | 16' STANDARD
 ELEVATION A, A-2B & B: 1400 SQ.FT. | ELEVATION B-2B: 1399 SQ.FT. | ELEVATION C & C-2B: 1408 SQ.FT.



DUNSDON

3 STOREY END UNIT | 16' STANDARD
 ELEVATION A & A-2B: 1452 SQ.FT. | ELEVATION B & B-2B: 1456 SQ.FT.



Illustrations are artist's concept. All dimensions are approximate. Specifications, terms and conditions are subject to change without notice. Floor plans and room dimensions apply to elevation A of this model type and may vary according to elevation. Plan may be built with mirror image. Location of furnace, hot water tank, support posts and beams are determined by the HVAC designer or architect and may result in drywall boxes on walls and ceilings that are not shown. The size and location of the utility area are approximate. The number of steps at front and rear may vary depending on grading. E. & O. E. • SWT-302



Illustrations are artist's concept. All dimensions are approximate. Specifications, terms and conditions are subject to change without notice. Floor plans and room dimensions apply to elevation A of this model type and may vary according to elevation. Plan may be built with mirror image. Location of furnace, hot water tank, support posts and beams are determined by the HVAC designer or architect and may result in drywall boxes on walls and ceilings that are not shown. The size and location of the utility area are approximate. The number of steps at front and rear may vary depending on grading. E. & O. E. • SWT-313

